



Community Development and Engagement Strategy

2021 - 2026

The Lockyer Valley community is diverse, connected and participates in bringing to reality a shared vision of a vibrant region.



Key Theme *Lockyer Community*

Our healthy community welcomes the spirited diversity found within our region. Times of hardship highlight our resilience.

Our high standards support our quality of life and vibrancy while providing a dynamic and safe place full of opportunity. We strive to build on who we are and all that our region has to offer by connecting business, the community and government.

Key Pillars

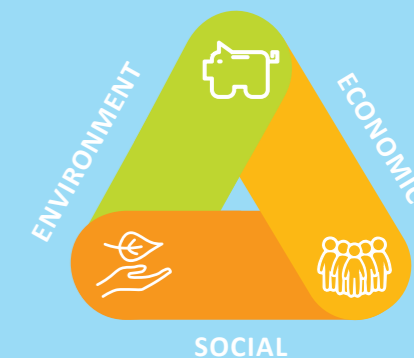
- Community Engagement and Consultation
- Community Capacity Building
- Developing a Safe, Healthy and Inclusive Community

Strategic Priorities

- SP 1** Engage with the community to ensure the community's views, values and aspirations inform Council decision-making.
- SP 2** Support community groups to increase their capacity, resilience and sustainability.
- SP 3** Develop and deliver programs, in consultation and collaboration with stakeholders, to promote community wellbeing and resilience, including recovery from adverse events.
- SP 4** Strengthen and utilise partnerships with NGOs and government agencies to improve support services and programs for vulnerable members of the community.

Key Stakeholders

- Community interest groups
- Children, Youth, Families, Seniors
- Cultural and Linguistically Diverse Communities
- Aboriginal and Torres Strait Islanders
- Schools
- Local and Regional NGOs
- Government agencies
- Council business units



Performance Measures



Community involvement in Council decision making



Level of participation in community activations



Strong and vibrant community groups