



# Lockyer Valley Regional Council Draft Planning Scheme

REGIONAL COUNCIL

## OM03C Biodiversity - Wetlands overlay map

### Matters of State Environmental Significance

Wetlands

### Matters of Local Environmental Significance

Wetlands

### Separation Areas

Separation Area

### Waterways

Stream order 1 and 2

Stream order 3 and 4

Stream order 5 and greater

### Other Features

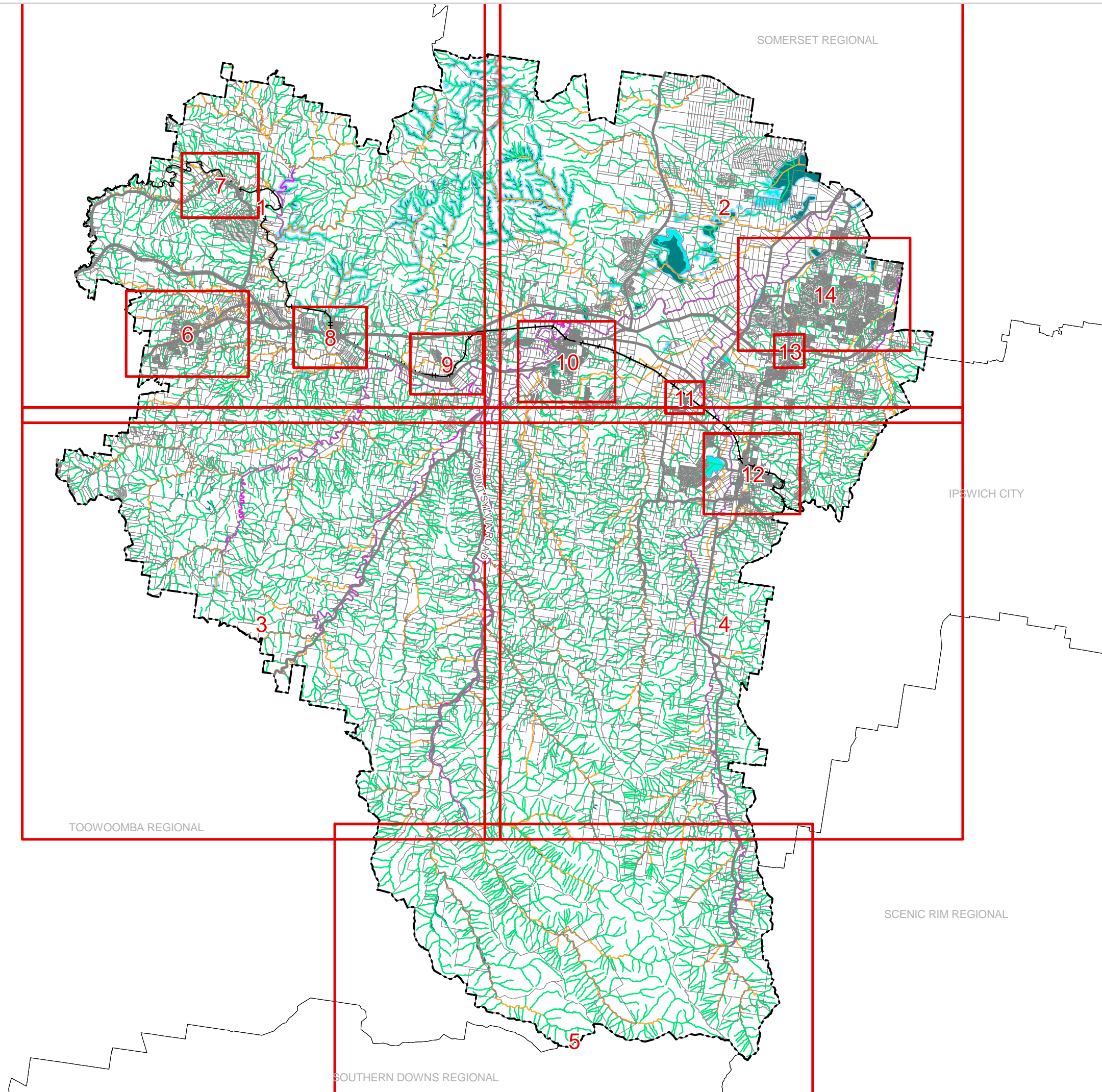
Major Road

Railway Network

Property Boundary

Local Government Boundary

Watercourse or Waterbody



### NOTE

Refer to online or electronic mapping where layers overlap or labels obstruct the data on the map.

### MAP INFORMATION

Based on or contains data sourced from the State Government which gives no warranty in relation to the data (including accuracy, reliability, completeness or suitability) and accepts no liability (including without limitation, liability in negligence) for any loss, damage or costs (including consequential damage) relating to any use of the data.  
© Copyright Lockyer Valley Regional Council 2023

### DATA SOURCES

Cadastral data weekly - whole of State Queensland, Rail network - Queensland, Baseline roads and tracks - Queensland: © State of Queensland (Department of Resources) 2023. MSES - High ecological significance wetlands, MSES - High ecological value waters - wetlands: © State of Queensland (Department of Environment and Science) 2023

Gazettal Date: 00/00/0000

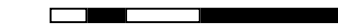
Geocentric Datum of Australia (GDA2020 / MGA zone 56)



Date: 19/6/2023

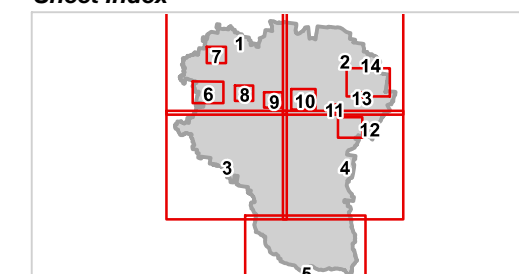
Approx Scale @ A3: 1:250,000

0 10



kilometres

### Sheet Index



OM03C Biodiversity - Wetlands overlay  
Local government area-00





REGIONAL COUNCIL

### OM03C Biodiversity - Wetlands overlay map

**Matters of State Environmental Significance**

Wetlands

**Matters of Local Environmental Significance**

Wetlands

**Separation Areas**

Separation Area

**Waterways**

Stream order 1 and 2

Stream order 3 and 4

Stream order 5 and greater

**Other Features**

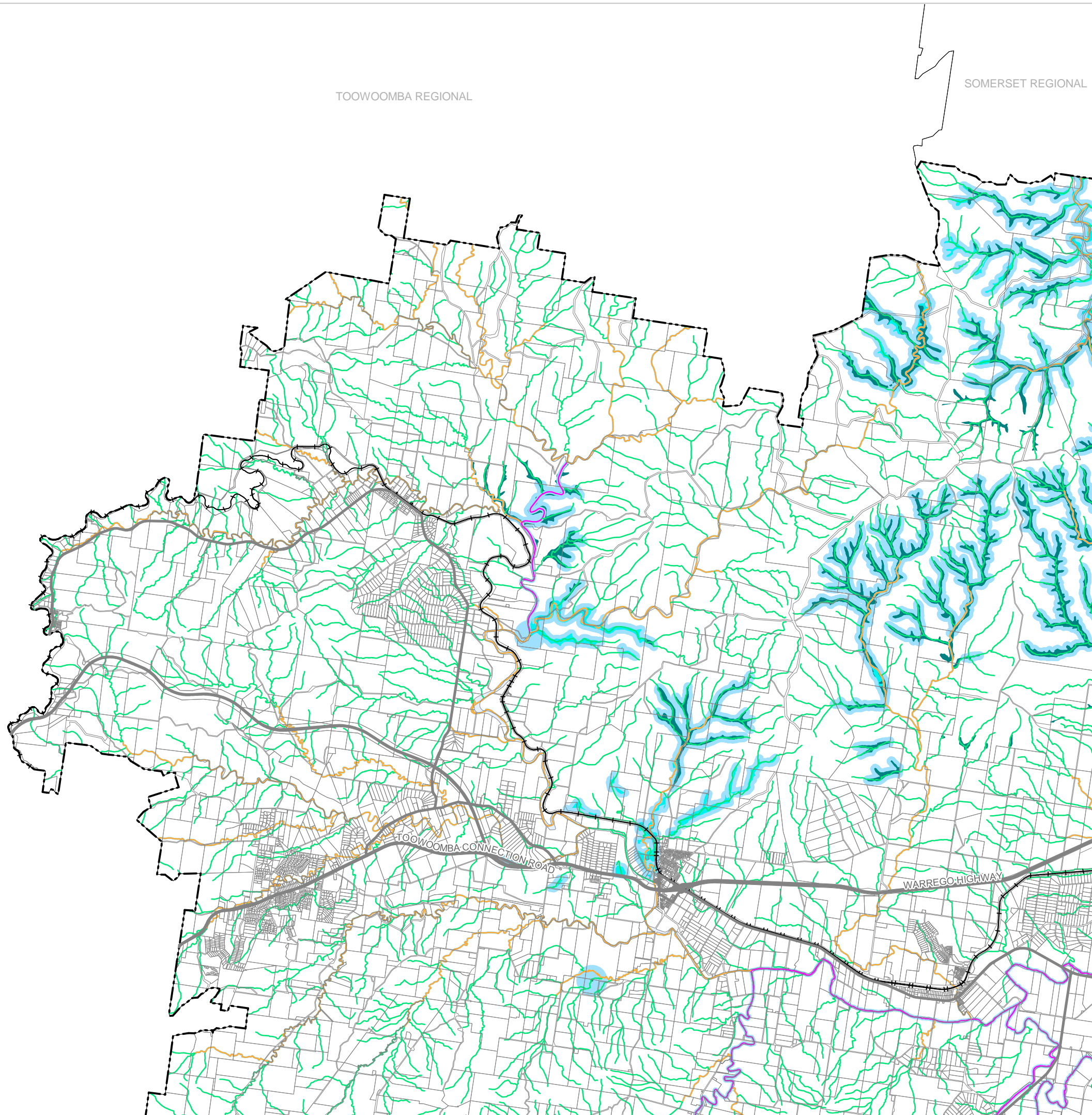
Major Road

Railway Network

Property Boundary

Local Government Boundary

Watercourse or Waterbody



**NOTE**

Refer to online or electronic mapping where layers overlap or labels obstruct the data on the map.

**MAP INFORMATION**

Based on or contains data sourced from the State Government which gives no warranty in relation to the data (including accuracy, reliability, completeness or suitability) and accepts no liability (including without limitation, liability in negligence) for any loss, damage or costs (including consequential damage) relating to any use of the data.  
© Copyright Lockyer Valley Regional Council 2023

**DATA SOURCES**

Cadastral data weekly - whole of State Queensland, Rail network - Queensland, Baseline roads and tracks - Queensland: © State of Queensland (Department of Resources) 2023. MSES - High ecological significance wetlands, MSES - High ecological value waters - wetlands: © State of Queensland (Department of Environment and Science) 2023

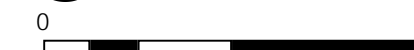
Gazettal Date: 00/00/0000

Geocentric Datum of Australia (GDA2020 / MGA zone 56)

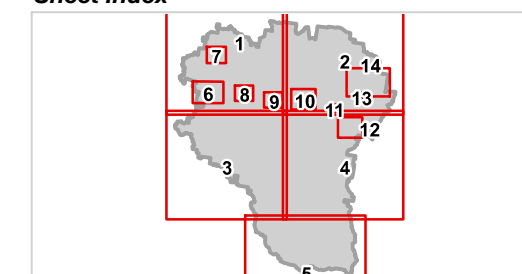


Date: 19/6/2023

Approx Scale @ A3: 1:100,000



**Sheet Index**



OM03C Biodiversity - Wetlands overlay  
LGA north-west-01





REGIONAL COUNCIL

### OM03C Biodiversity - Wetlands overlay map

**Matters of State Environmental Significance**

Wetlands

**Matters of Local Environmental Significance**

Wetlands

**Separation Areas**

Separation Area

**Waterways**

Stream order 1 and 2

Stream order 3 and 4

Stream order 5 and greater

**Other Features**

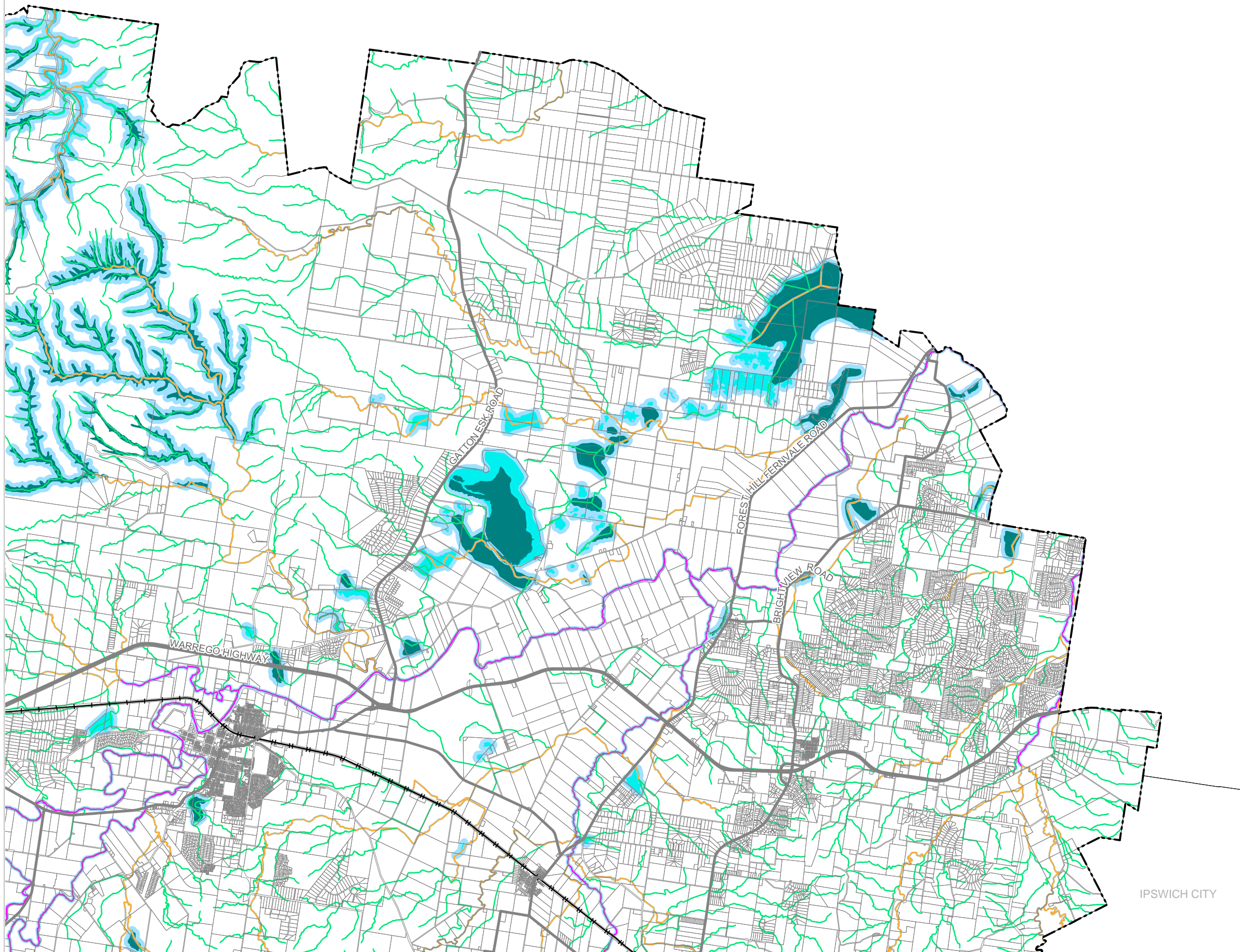
Major Road

Railway Network

Property Boundary

Local Government Boundary

Watercourse or Waterbody



**NOTE**

Refer to online or electronic mapping where layers overlap or labels obstruct the data on the map.

**MAP INFORMATION**

Based on or contains data sourced from the State Government which gives no warranty in relation to the data (including accuracy, reliability, completeness or suitability) and accepts no liability (including without limitation, liability in negligence) for any loss, damage or costs (including consequential damage) relating to any use of the data.  
© Copyright Lockyer Valley Regional Council 2023

**DATA SOURCES**

Cadastral data weekly - whole of State Queensland, Rail network - Queensland, Baseline roads and tracks - Queensland: © State of Queensland (Department of Resources) 2023. MSES - High ecological significance wetlands, MSES - High ecological value waters - wetlands: © State of Queensland (Department of Environment and Science) 2023

Gazettal Date: 00/00/0000

Geocentric Datum of Australia (GDA2020 / MGA zone 56)

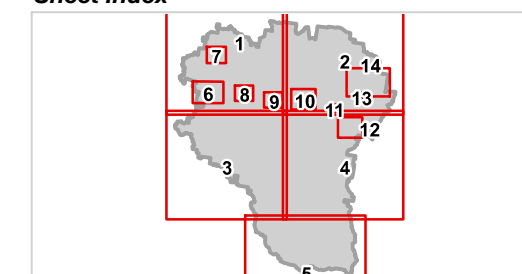


Date: 19/6/2023

Approx Scale @ A3: 1:100,000



**Sheet Index**



OM03C Biodiversity - Wetlands overlay  
LGA north-east-02

SOMERSET REGIONAL

IPSWICH CITY





REGIONAL COUNCIL

### OM03C Biodiversity - Wetlands overlay map

**Matters of State Environmental Significance**

Wetlands

**Matters of Local Environmental Significance**

Wetlands

**Separation Areas**

Separation Area

**Waterways**

Stream order 1 and 2

Stream order 3 and 4

Stream order 5 and greater

**Other Features**

Major Road

Railway Network

Property Boundary

Local Government Boundary

Watercourse or Waterbody

**NOTE**

Refer to online or electronic mapping where layers overlap or labels obstruct the data on the map.

**MAP INFORMATION**

Based on or contains data sourced from the State Government which gives no warranty in relation to the data (including accuracy, reliability, completeness or suitability) and accepts no liability (including without limitation, liability in negligence) for any loss, damage or costs (including consequential damage) relating to any use of the data.  
© Copyright Lockyer Valley Regional Council 2023

**DATA SOURCES**

Cadastral data weekly - whole of State Queensland, Rail network - Queensland, Baseline roads and tracks - Queensland: © State of Queensland (Department of Resources) 2023. MSES - High ecological significance wetlands, MSES - High ecological value waters - wetlands: © State of Queensland (Department of Environment and Science) 2023

Gazettal Date: 00/00/0000

Geocentric Datum of Australia (GDA2020 / MGA zone 56)

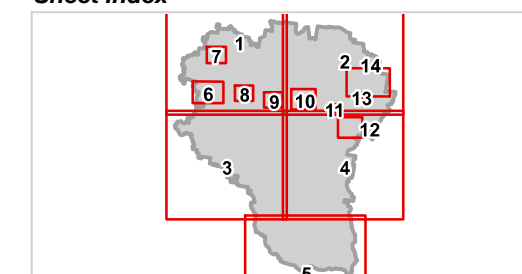


Date: 19/6/2023

Approx Scale @ A3: 1:100,000

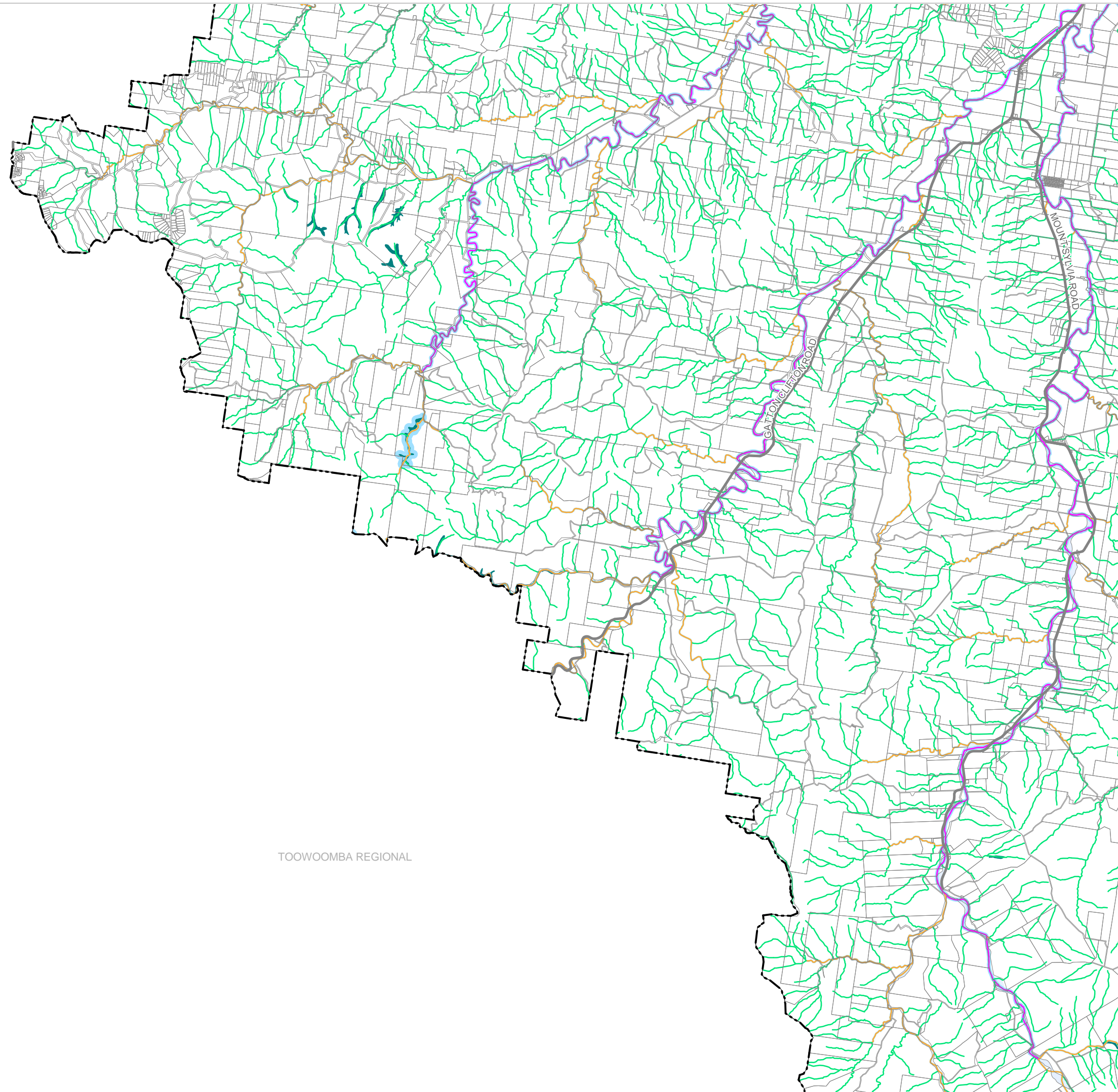


**Sheet Index**



OM03C Biodiversity - Wetlands overlay  
LGA south-west-03

TOOWOOMBA REGIONAL







# Lockyer Valley Regional Council Draft Planning Scheme

REGIONAL COUNCIL

## OM03C Biodiversity - Wetlands overlay map

### Matters of State Environmental Significance

Wetlands

### Matters of Local Environmental Significance

Wetlands

### Separation Areas

Separation Area

### Waterways

Stream order 1 and 2

Stream order 3 and 4

Stream order 5 and greater

### Other Features

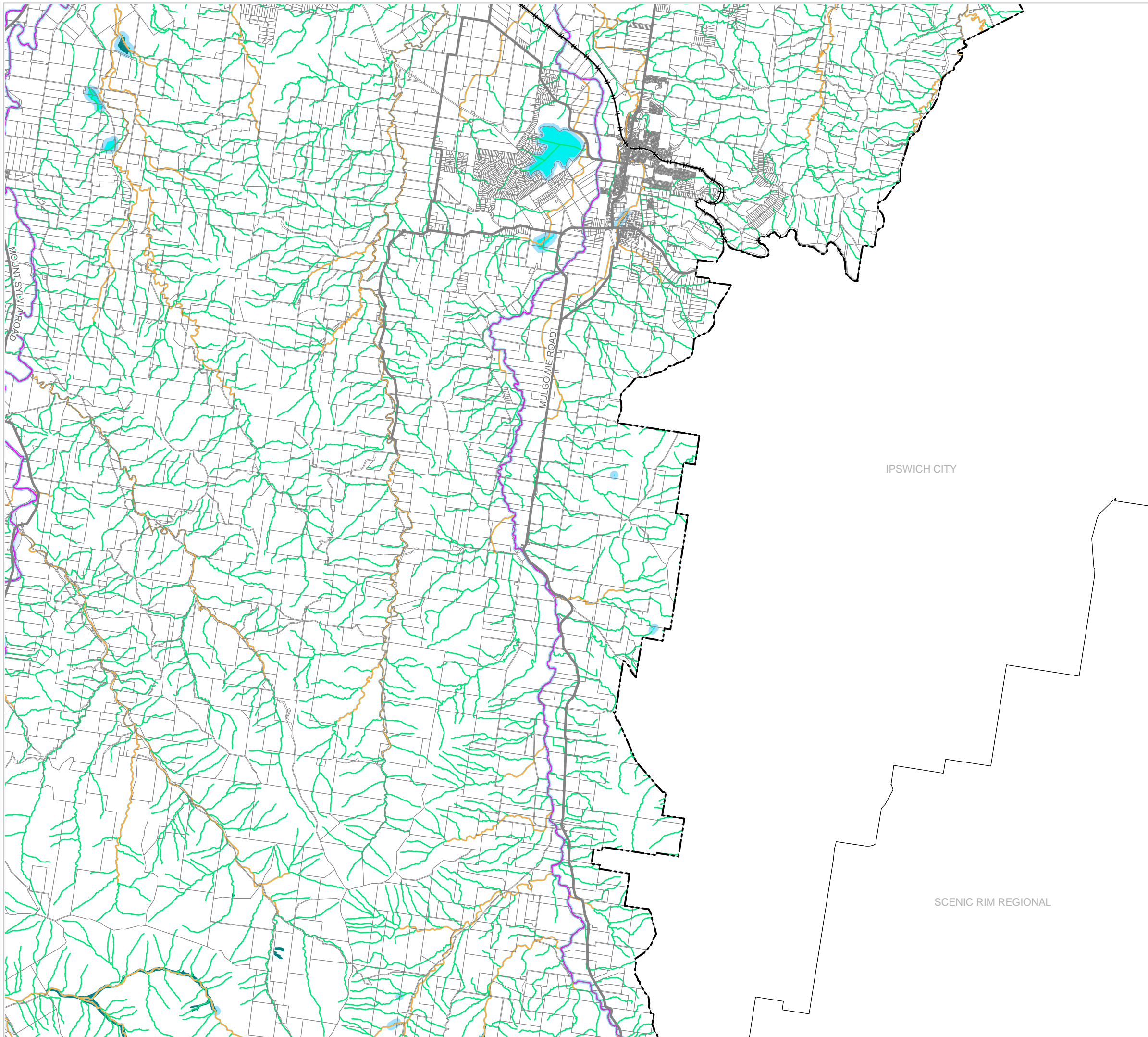
Major Road

Railway Network

Property Boundary

Local Government Boundary

Watercourse or Waterbody



### NOTE

Refer to online or electronic mapping where layers overlap or labels obstruct the data on the map.

### MAP INFORMATION

Based on or contains data sourced from the State Government which gives no warranty in relation to the data (including accuracy, reliability, completeness or suitability) and accepts no liability (including without limitation, liability in negligence) for any loss, damage or costs (including consequential damage) relating to any use of the data.  
© Copyright Lockyer Valley Regional Council 2023

### DATA SOURCES

Cadastral data weekly - whole of State Queensland, Rail network - Queensland, Baseline roads and tracks - Queensland: © State of Queensland (Department of Resources) 2023. MSES - High ecological significance wetlands, MSES - High ecological value waters - wetlands: © State of Queensland (Department of Environment and Science) 2023

Gazettal Date: 00/00/0000

Geocentric Datum of Australia (GDA2020 / MGA zone 56)

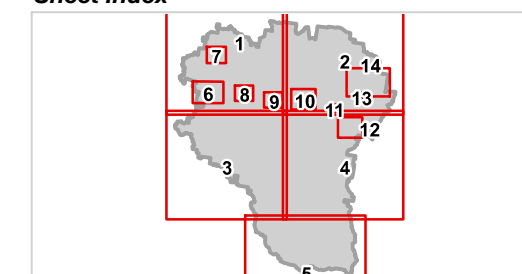


Date: 19/6/2023

Approx Scale @ A3: 1:100,000



### Sheet Index



OM03C Biodiversity - Wetlands overlay  
LGA south-east-04





# Lockyer Valley Regional Council Draft Planning Scheme

REGIONAL COUNCIL

## OM03C Biodiversity - Wetlands overlay map

### Matters of State Environmental Significance

Wetlands

### Matters of Local Environmental Significance

Wetlands

### Separation Areas

Separation Area

### Waterways

Stream order 1 and 2

Stream order 3 and 4

Stream order 5 and greater

### Other Features

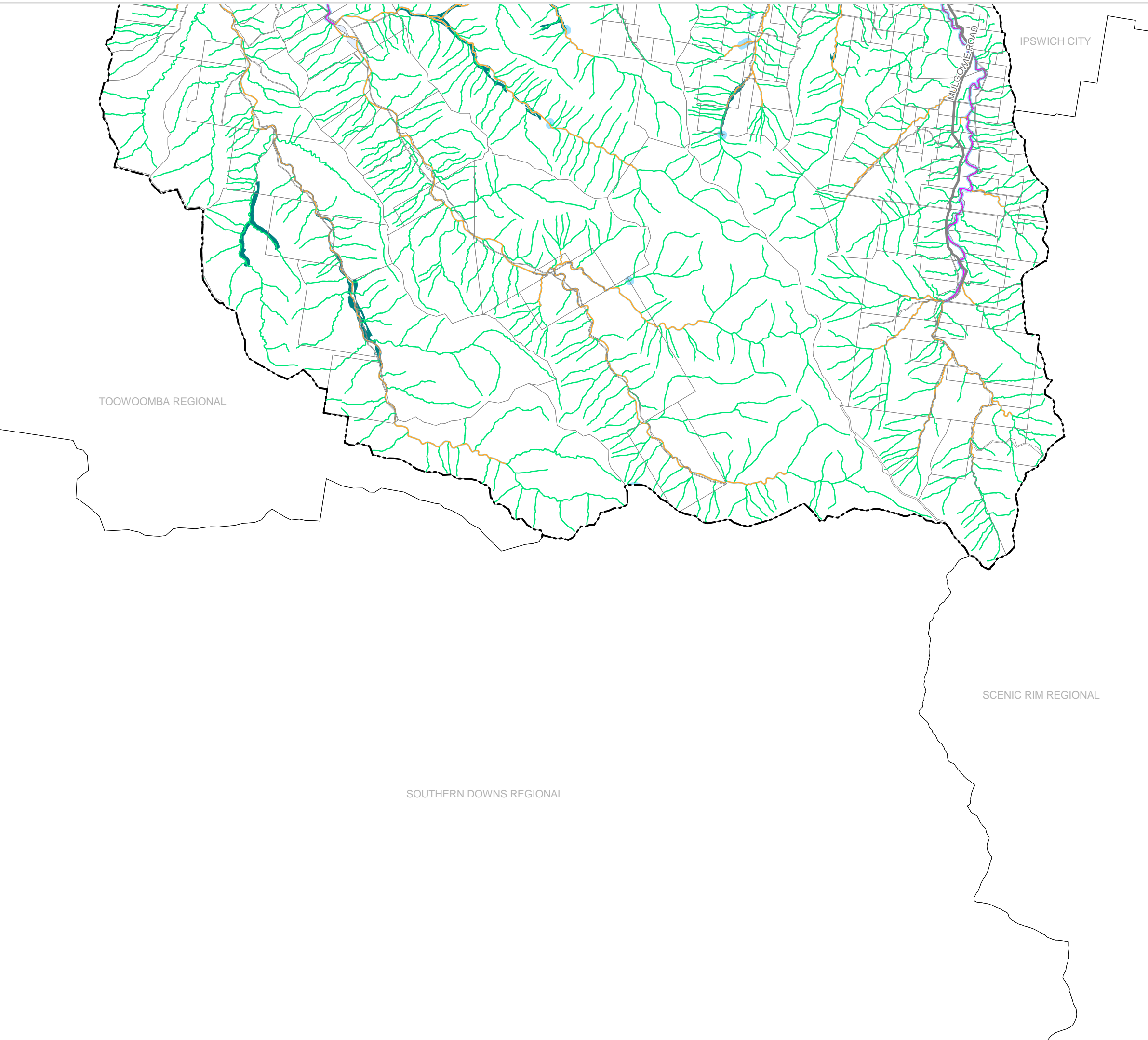
Major Road

Railway Network

Property Boundary

Local Government Boundary

Watercourse or Waterbody



### NOTE

Refer to online or electronic mapping where layers overlap or labels obstruct the data on the map.

### MAP INFORMATION

Based on or contains data sourced from the State Government which gives no warranty in relation to the data (including accuracy, reliability, completeness or suitability) and accepts no liability (including without limitation, liability in negligence) for any loss, damage or costs (including consequential damage) relating to any use of the data.  
© Copyright Lockyer Valley Regional Council 2023

### DATA SOURCES

Cadastral data weekly - whole of State Queensland, Rail network - Queensland, Baseline roads and tracks - Queensland: © State of Queensland (Department of Resources) 2023. MSES - High ecological significance wetlands, MSES - High ecological value waters - wetlands: © State of Queensland (Department of Environment and Science) 2023

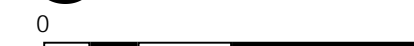
Gazettal Date: 00/00/0000

Geocentric Datum of Australia (GDA2020 / MGA zone 56)

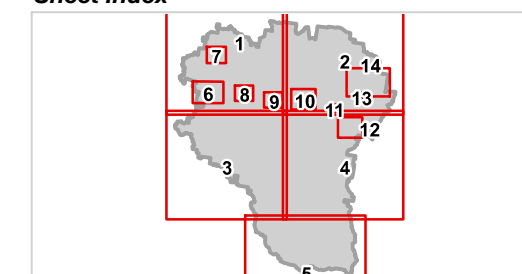


Date: 19/6/2023

Approx Scale @ A3: 1:100,000



### Sheet Index



OM03C Biodiversity - Wetlands overlay  
LGA south-05





REGIONAL COUNCIL

### OM03C Biodiversity - Wetlands overlay map

**Matters of State Environmental Significance**

Wetlands

**Matters of Local Environmental Significance**

Wetlands

**Separation Areas**

Separation Area

**Waterways**

Stream order 1 and 2

Stream order 3 and 4

Stream order 5 and greater

**Other Features**

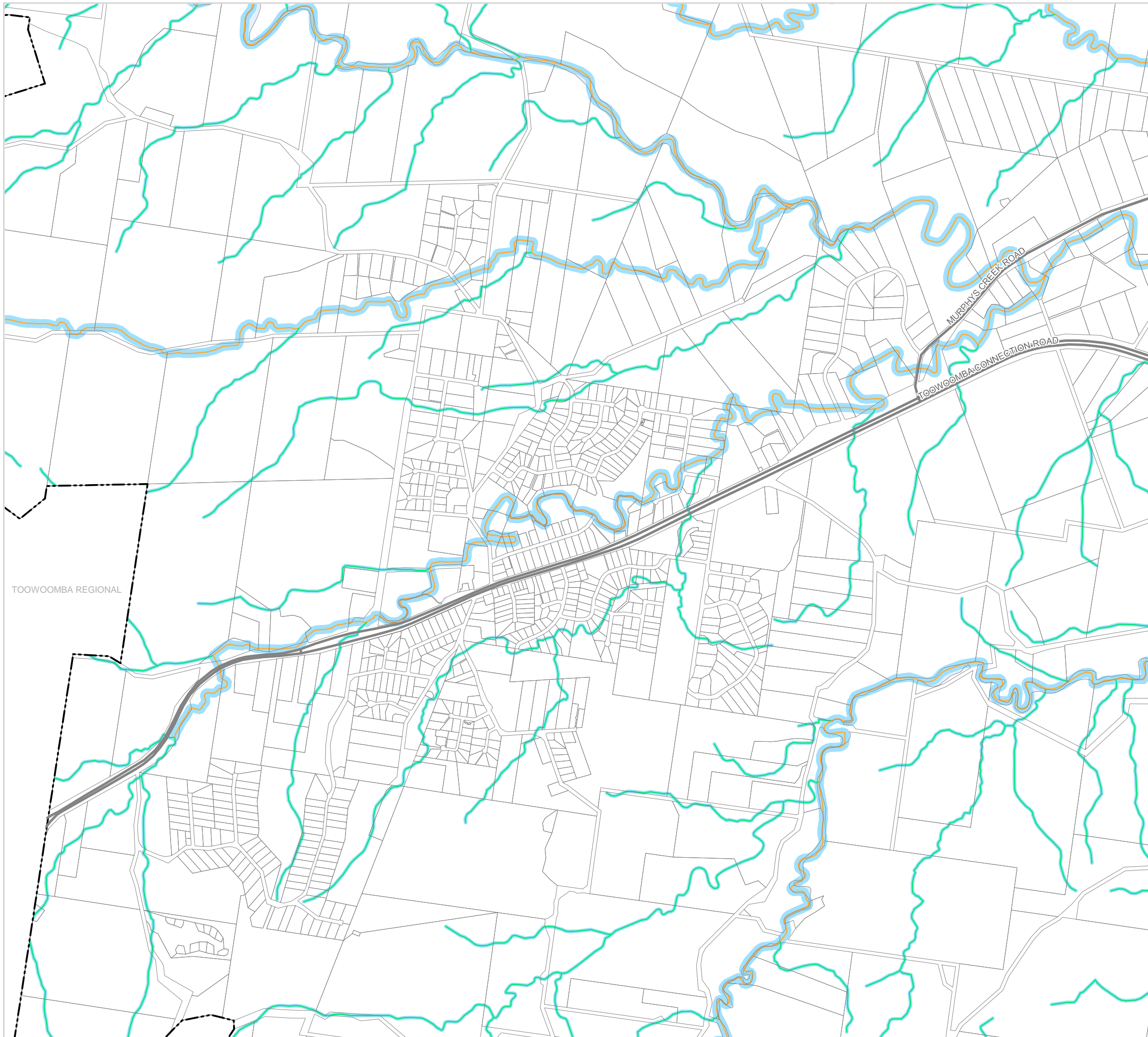
Major Road

Railway Network

Property Boundary

Local Government Boundary

Watercourse or Waterbody



TOOWOOMBA REGIONAL

MURPHY'S CREEK ROAD  
TOOWOOMBA CONNECTION ROAD

**NOTE**

Refer to online or electronic mapping where layers overlap or labels obstruct the data on the map.

**MAP INFORMATION**

Based on or contains data sourced from the State Government which gives no warranty in relation to the data (including accuracy, reliability, completeness or suitability) and accepts no liability (including without limitation, liability in negligence) for any loss, damage or costs (including consequential damage) relating to any use of the data.  
© Copyright Lockyer Valley Regional Council 2023

**DATA SOURCES**

Cadastral data weekly - whole of State Queensland, Rail network - Queensland, Baseline roads and tracks - Queensland: © State of Queensland (Department of Resources) 2023. MSES - High ecological significance wetlands, MSES - High ecological value waters - wetlands: © State of Queensland (Department of Environment and Science) 2023

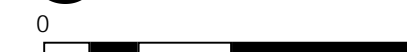
Gazettal Date: 00/00/0000

Geocentric Datum of Australia (GDA2020 / MGA zone 56)



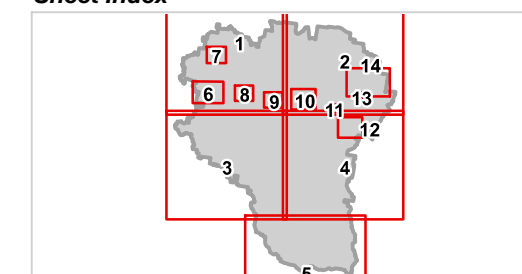
Date: 19/6/2023

Approx Scale @ A3: 1:20,000



kilometres

**Sheet Index**



OM3C Biodiversity - Wetlands overlay  
Withcott-06





REGIONAL COUNCIL

**OM03C Biodiversity - Wetlands overlay map**

**Matters of State Environmental Significance**

Wetlands

**Matters of Local Environmental Significance**

Wetlands

**Separation Areas**

Separation Area

**Waterways**

Stream order 1 and 2

Stream order 3 and 4

Stream order 5 and greater

**Other Features**

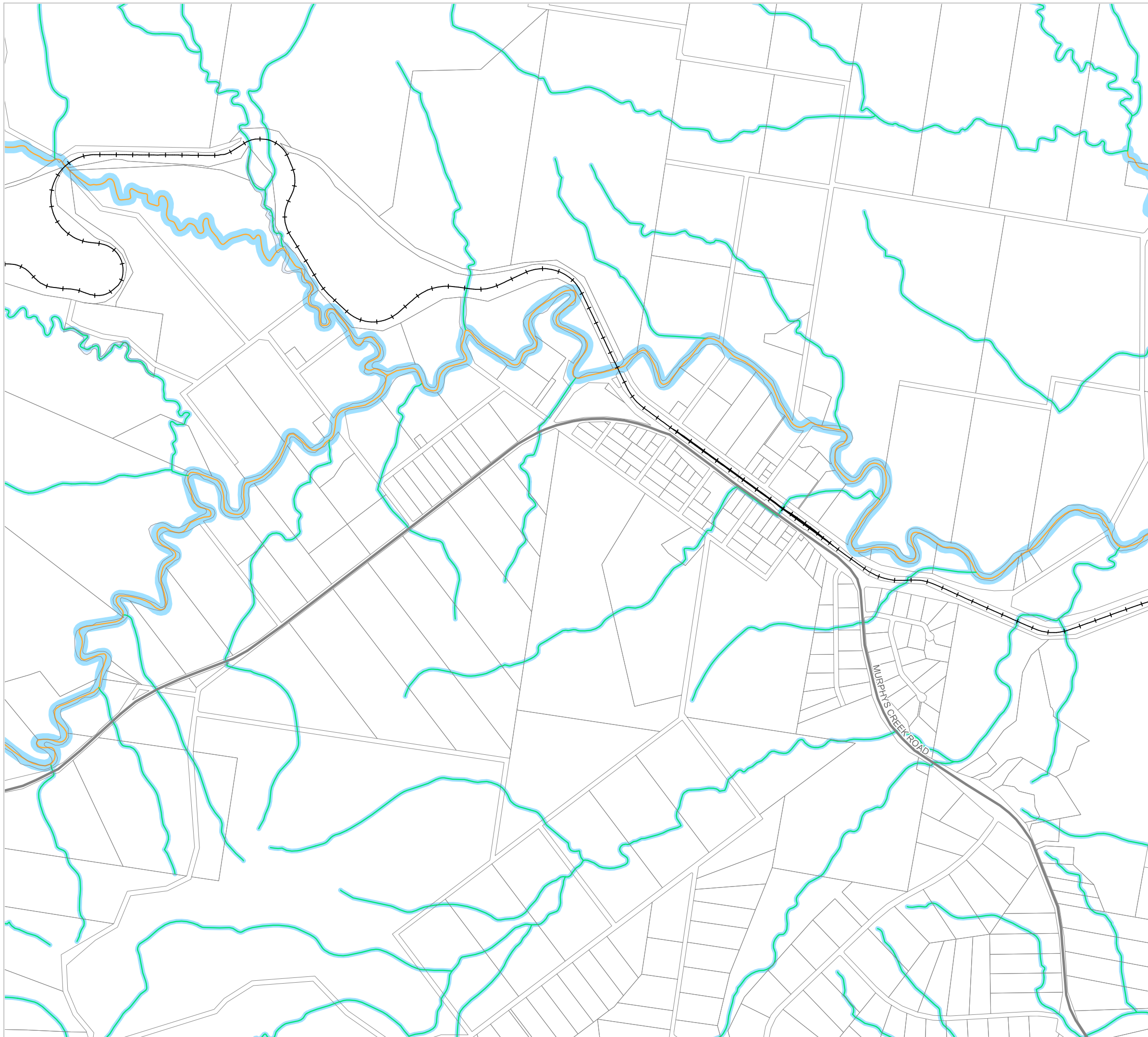
Major Road

Railway Network

Property Boundary

Local Government Boundary

Watercourse or Waterbody



**NOTE**

Refer to online or electronic mapping where layers overlap or labels obstruct the data on the map.

**MAP INFORMATION**

Based on or contains data sourced from the State Government which gives no warranty in relation to the data (including accuracy, reliability, completeness or suitability) and accepts no liability (including without limitation, liability in negligence) for any loss, damage or costs (including consequential damage) relating to any use of the data.

© Copyright Lockyer Valley Regional Council 2023

**DATA SOURCES**

Cadastral data weekly - whole of State Queensland, Rail network - Queensland, Baseline roads and tracks - Queensland: © State of Queensland (Department of Resources) 2023. MSES - High ecological significance wetlands, MSES - High ecological value waters - wetlands: © State of Queensland (Department of Environment and Science) 2023

Gazettal Date: 00/00/0000

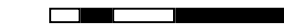
Geocentric Datum of Australia (GDA2020 / MGA zone 56)



Date: 19/6/2023

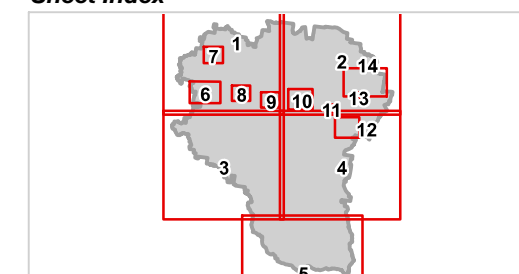
Approx Scale @ A3: 1:15,000

0 0.5



kilometres

**Sheet Index**



**OM03C Biodiversity - Wetlands overlay  
Murphys Creek-07**





REGIONAL COUNCIL

**OM03C Biodiversity - Wetlands  
overlay map**

**Matters of State Environmental Significance**

Wetlands

**Matters of Local Environmental Significance**

Wetlands

**Separation Areas**

Separation Area

**Waterways**

Stream order 1 and 2

Stream order 3 and 4

Stream order 5 and greater

**Other Features**

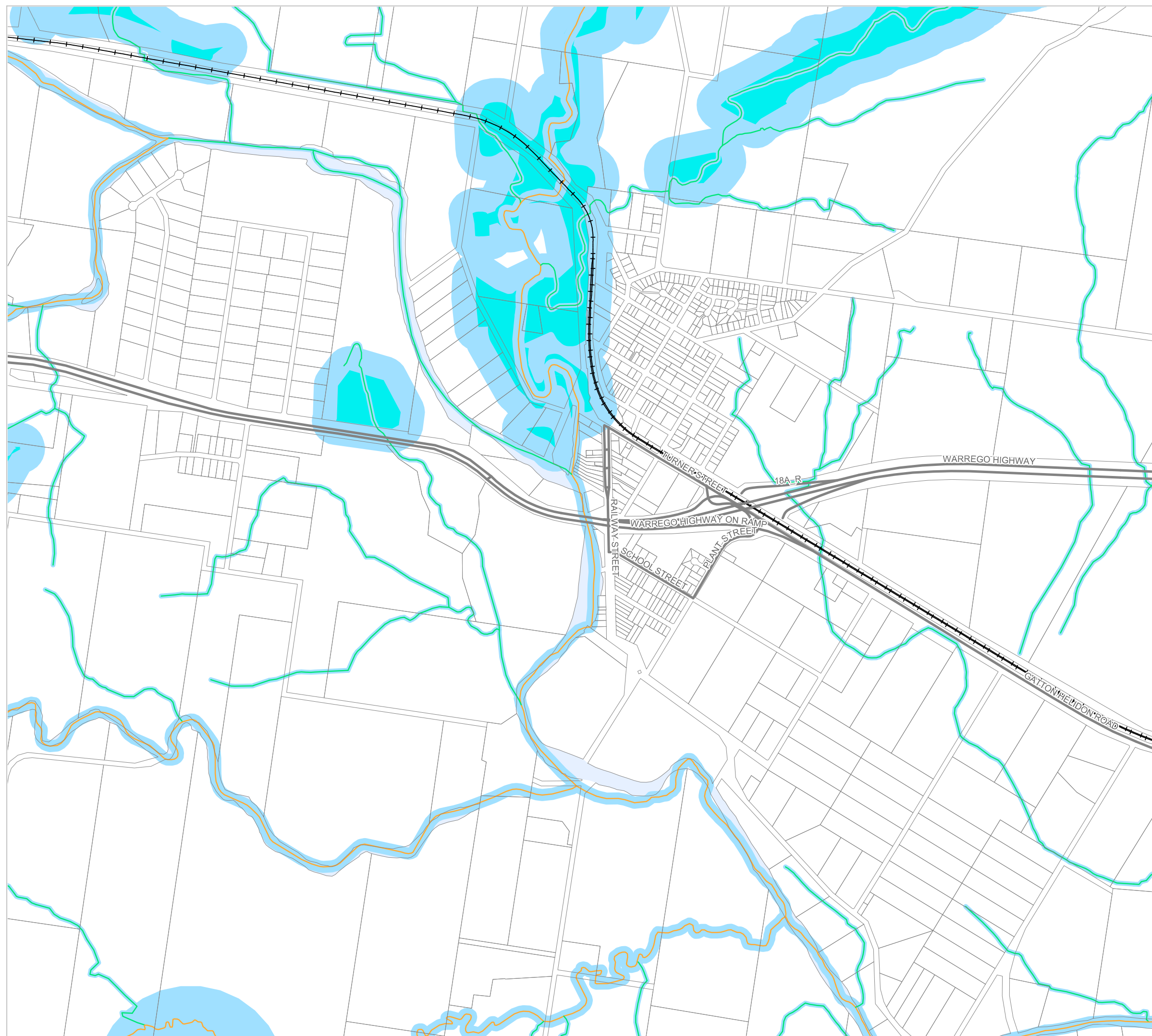
Major Road

Railway Network

Property Boundary

Local Government Boundary

Watercourse or Waterbody



**NOTE**

Refer to online or electronic mapping where layers overlap or labels obstruct the data on the map.

**MAP INFORMATION**

Based on or contains data sourced from the State Government which gives no warranty in relation to the data (including accuracy, reliability, completeness or suitability) and accepts no liability (including without limitation, liability in negligence) for any loss, damage or costs (including consequential damage) relating to any use of the data.

© Copyright Lockyer Valley Regional Council 2023

**DATA SOURCES**

Cadastral data weekly - whole of State Queensland, Rail network - Queensland, Baseline roads and tracks - Queensland: © State of Queensland (Department of Resources) 2023. MSES - High ecological significance wetlands, MSES - High ecological value waters - wetlands: © State of Queensland (Department of Environment and Science) 2023

Gazettal Date: 00/00/0000

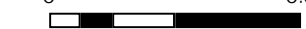
Geocentric Datum of Australia (GDA2020 / MGA zone 56)



Date: 19/6/2023

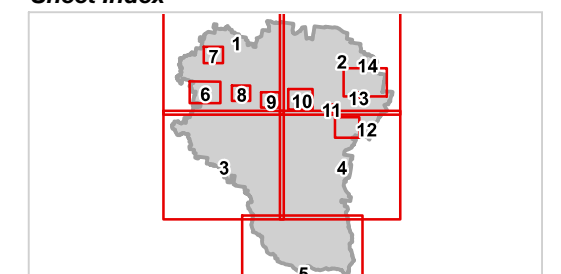
Approx Scale @ A3: 1:15,000

0 0.5



kilometres

**Sheet Index**







# Lockyer Valley Regional Council Draft Planning Scheme

REGIONAL COUNCIL

## OM03C Biodiversity - Wetlands overlay map

### Matters of State Environmental Significance

Wetlands

### Matters of Local Environmental Significance

Wetlands

### Separation Areas

Separation Area

### Waterways

Stream order 1 and 2

Stream order 3 and 4

Stream order 5 and greater

### Other Features

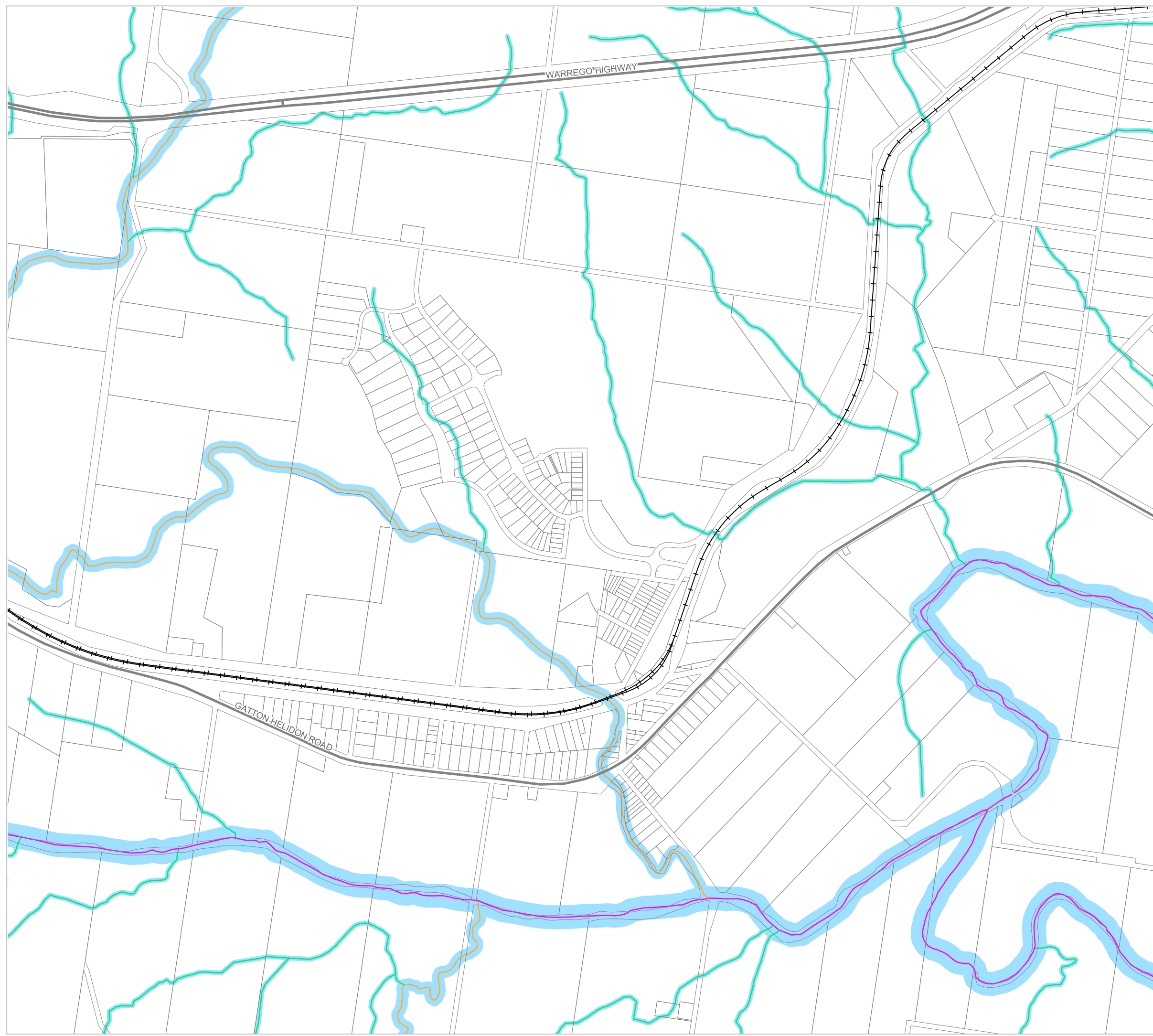
Major Road

Railway Network

Property Boundary

Local Government Boundary

Watercourse or Waterbody



### NOTE

Refer to online or electronic mapping where layers overlap or labels obstruct the data on the map.

### MAP INFORMATION

Based on or contains data sourced from the State Government which gives no warranty in relation to the data (including accuracy, reliability, completeness or suitability) and accepts no liability (including without limitation, liability in negligence) for any loss, damage or costs (including consequential damage) relating to any use of the data.  
© Copyright Lockyer Valley Regional Council 2023

### DATA SOURCES

Cadastral data weekly - whole of State Queensland, Rail network - Queensland, Baseline roads and tracks - Queensland: © State of Queensland (Department of Resources) 2023. MSES - High ecological significance wetlands, MSES - High ecological value waters - wetlands: © State of Queensland (Department of Environment and Science) 2023

Gazettal Date: 00/00/0000

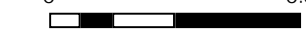
Geocentric Datum of Australia (GDA2020 / MGA zone 56)



Date: 19/6/2023

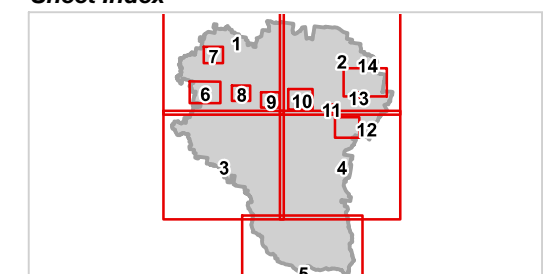
Approx Scale @ A3: 1:15,000

0 0.5



kilometres

### Sheet Index



OM03C Biodiversity - Wetlands overlay  
Grantham-09





# Lockyer Valley Regional Council Draft Planning Scheme

REGIONAL COUNCIL

## OM03C Biodiversity - Wetlands overlay map

### Matters of State Environmental Significance

Wetlands

### Matters of Local Environmental Significance

Wetlands

### Separation Areas

Separation Area

### Waterways

Stream order 1 and 2

Stream order 3 and 4

Stream order 5 and greater

### Other Features

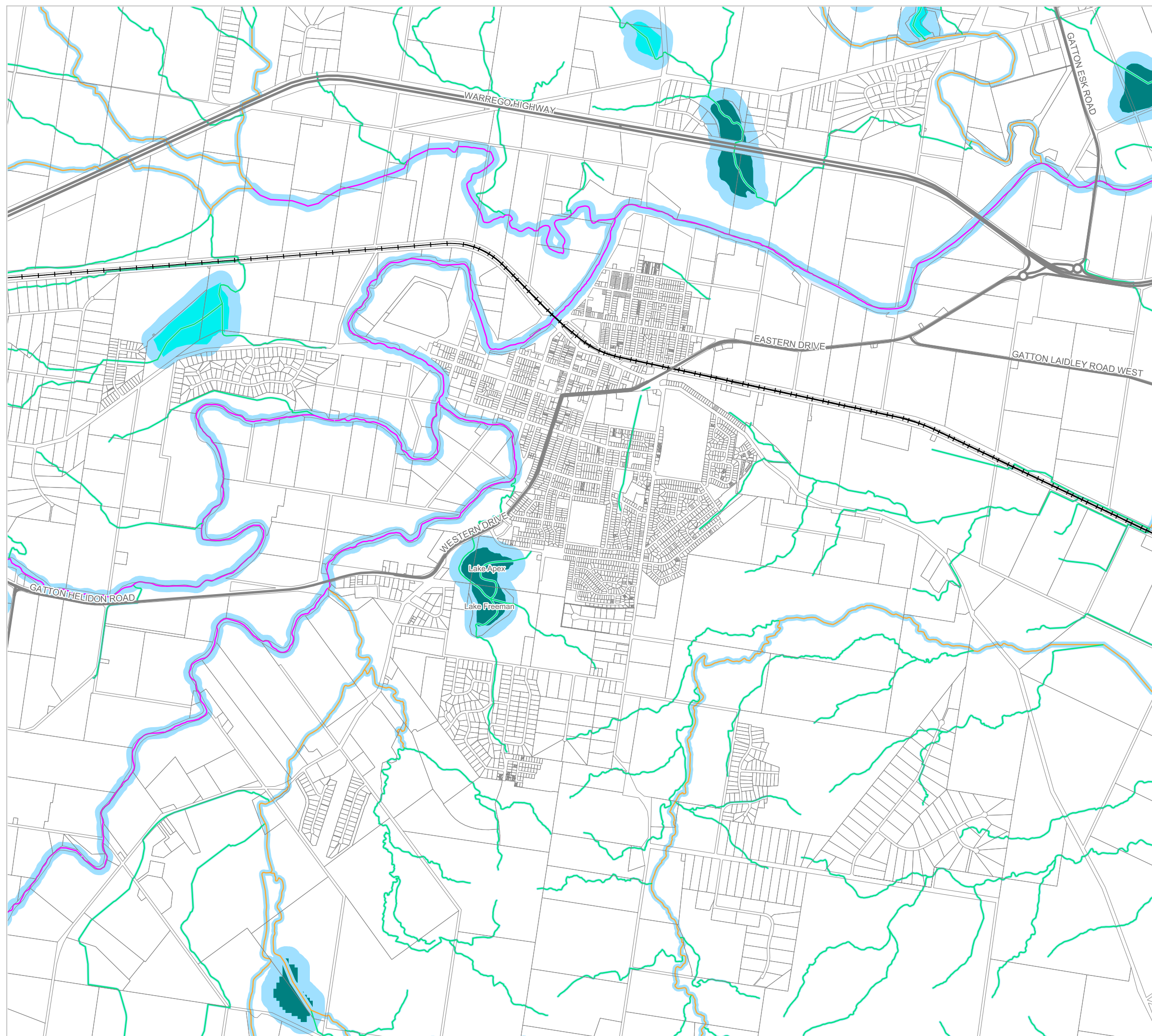
Major Road

Railway Network

Property Boundary

Local Government Boundary

Watercourse or Waterbody



### NOTE

Refer to online or electronic mapping where layers overlap or labels obstruct the data on the map.

### MAP INFORMATION

Based on or contains data sourced from the State Government which gives no warranty in relation to the data (including accuracy, reliability, completeness or suitability) and accepts no liability (including without limitation, liability in negligence) for any loss, damage or costs (including consequential damage) relating to any use of the data.  
© Copyright Lockyer Valley Regional Council 2023

### DATA SOURCES

Cadastral data weekly - whole of State Queensland, Rail network - Queensland, Baseline roads and tracks - Queensland: © State of Queensland (Department of Resources) 2023. MSES - High ecological significance wetlands, MSES - High ecological value waters - wetlands: © State of Queensland (Department of Environment and Science) 2023

Gazettal Date: 00/00/0000

Geocentric Datum of Australia (GDA2020 / MGA zone 56)



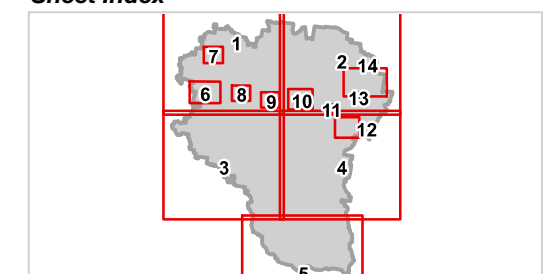
Date: 19/6/2023

Approx Scale @ A3: 1:30,000



kilometres

### Sheet Index



OM03C Biodiversity - Wetlands overlay  
Gattton-10





# Lockyer Valley Regional Council Draft Planning Scheme

REGIONAL COUNCIL

## OM03C Biodiversity - Wetlands overlay map

### Matters of State Environmental Significance

Wetlands

### Matters of Local Environmental Significance

Wetlands

### Separation Areas

Separation Area

### Waterways

Stream order 1 and 2

Stream order 3 and 4

Stream order 5 and greater

### Other Features

Major Road

Railway Network

Property Boundary

Local Government Boundary

Watercourse or Waterbody

### NOTE

Refer to online or electronic mapping where layers overlap or labels obstruct the data on the map.

### MAP INFORMATION

Based on or contains data sourced from the State Government which gives no warranty in relation to the data (including accuracy, reliability, completeness or suitability) and accepts no liability (including without limitation, liability in negligence) for any loss, damage or costs (including consequential damage) relating to any use of the data.

© Copyright Lockyer Valley Regional Council 2023

### DATA SOURCES

Cadastral data weekly - whole of State Queensland, Rail network - Queensland, Baseline roads and tracks - Queensland: © State of Queensland (Department of Resources) 2023. MSES - High ecological significance wetlands, MSES - High ecological value waters - wetlands: © State of Queensland (Department of Environment and Science) 2023

Gazettal Date: 00/00/0000

Geocentric Datum of Australia (GDA2020 / MGA zone 56)



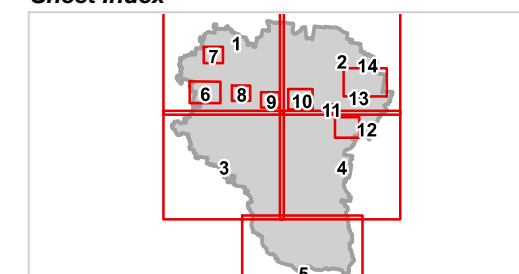
Date: 19/6/2023

Approx Scale @ A3: 1:7,500

0 0.5

kilometres

### Sheet Index



OM03C Biodiversity - Wetlands overlay  
Forest Hill-11



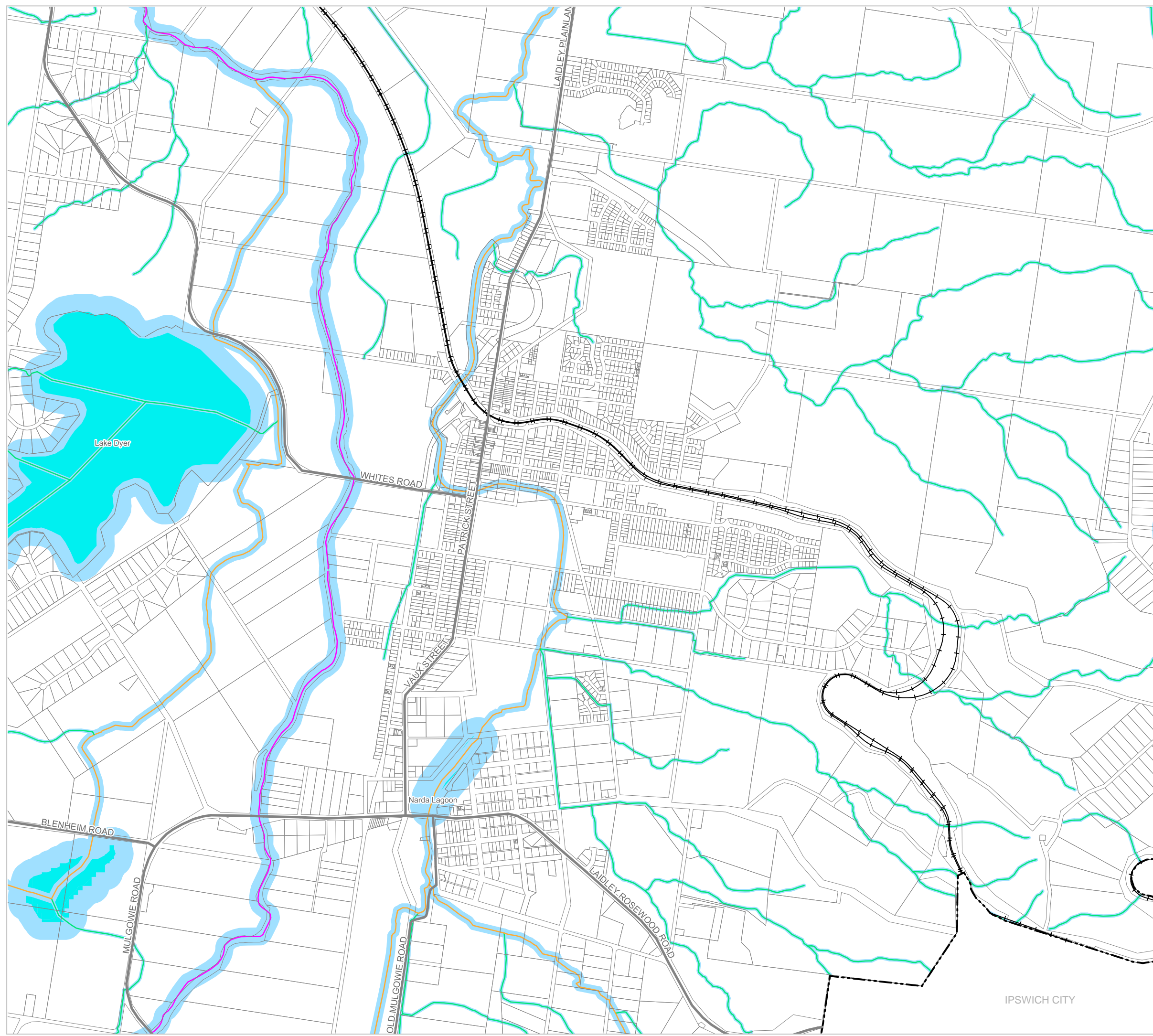




REGIONAL COUNCIL

**OM03C Biodiversity - Wetlands  
overlay map**

- Matters of State Environmental Significance**
  - Wetlands
- Matters of Local Environmental Significance**
  - Wetlands
- Separation Areas**
  - Separation Area
- Waterways**
  - Stream order 1 and 2
  - Stream order 3 and 4
  - Stream order 5 and greater
- Other Features**
  - Major Road
  - Railway Network
  - Property Boundary
  - Local Government Boundary
  - Watercourse or Waterbody



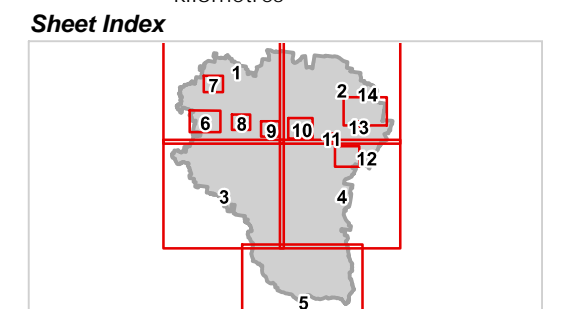
**NOTE**  
Refer to online or electronic mapping where layers overlap or labels obstruct the data on the map.

**MAP INFORMATION**  
Based on or contains data sourced from the State Government which gives no warranty in relation to the data (including accuracy, reliability, completeness or suitability) and accepts no liability (including without limitation, liability in negligence) for any loss, damage or costs (including consequential damage) relating to any use of the data.  
© Copyright Lockyer Valley Regional Council 2023

**DATA SOURCES**  
Cadastral data weekly - whole of State Queensland, Rail network - Queensland, Baseline roads and tracks - Queensland: © State of Queensland (Department of Resources) 2023.  
MSES - High ecological significance wetlands, MSES - High ecological value waters - wetlands: © State of Queensland (Department of Environment and Science) 2023

Gazettal Date: 00/00/0000  
Geocentric Datum of Australia (GDA2020 / MGA zone 56)

Date: 19/6/2023  
Approx Scale @ A3: 1:20,000



**OM03C Biodiversity - Wetlands overlay  
Laidley-12**

IPSWICH CITY





REGIONAL COUNCIL

### OM03C Biodiversity - Wetlands overlay map

**Matters of State Environmental Significance**

Wetlands

**Matters of Local Environmental Significance**

Wetlands

**Separation Areas**

Separation Area

**Waterways**

Stream order 1 and 2

Stream order 3 and 4

Stream order 5 and greater

**Other Features**

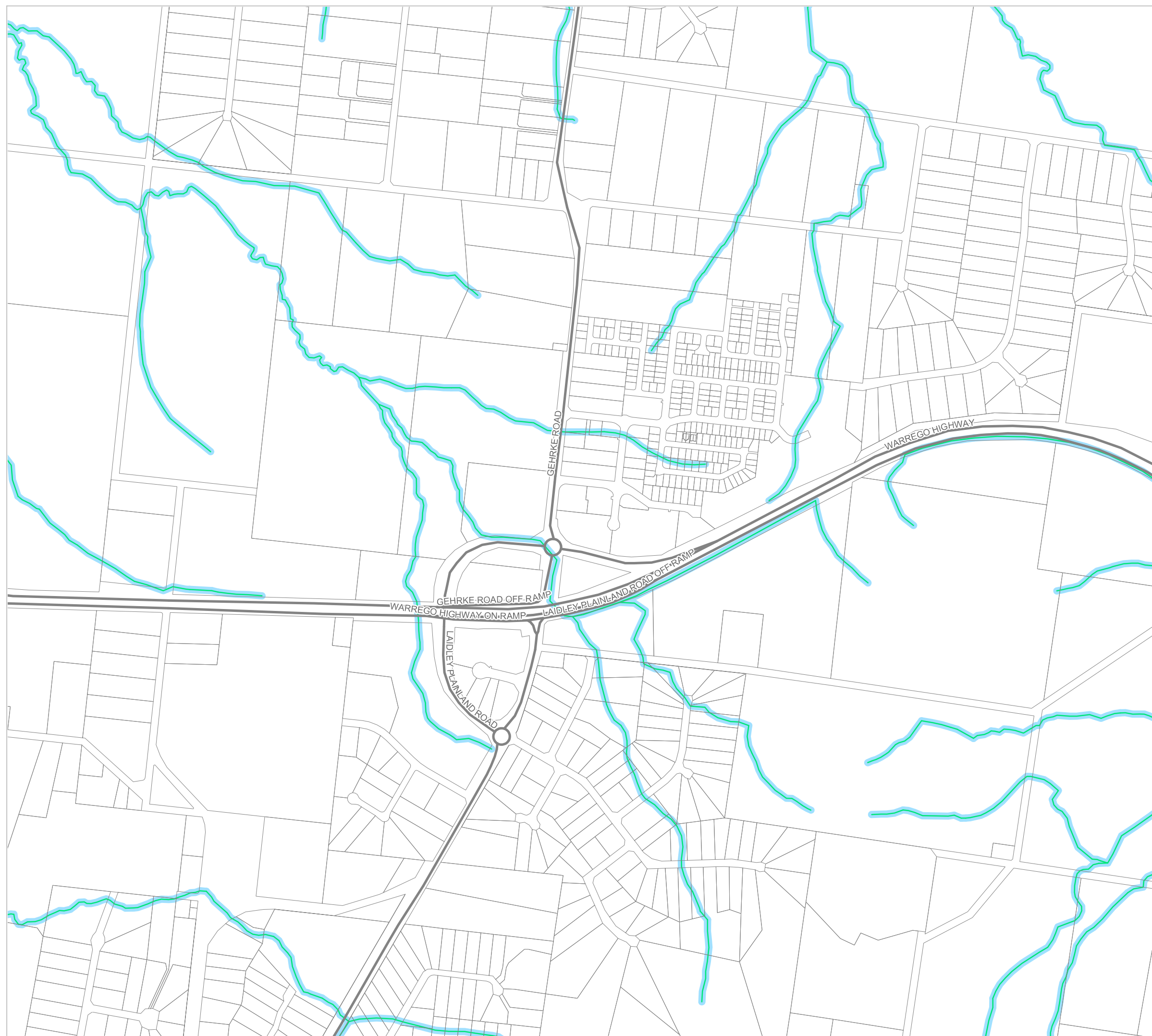
Major Road

Railway Network

Property Boundary

Local Government Boundary

Watercourse or Waterbody



**NOTE**

Refer to online or electronic mapping where layers overlap or labels obstruct the data on the map.

**MAP INFORMATION**

Based on or contains data sourced from the State Government which gives no warranty in relation to the data (including accuracy, reliability, completeness or suitability) and accepts no liability (including without limitation, liability in negligence) for any loss, damage or costs (including consequential damage) relating to any use of the data.

© Copyright Lockyer Valley Regional Council 2023

**DATA SOURCES**

Cadastral data weekly - whole of State Queensland, Rail network - Queensland, Baseline roads and tracks - Queensland: © State of Queensland (Department of Resources) 2023. MSES - High ecological significance wetlands, MSES - High ecological value waters - wetlands: © State of Queensland (Department of Environment and Science) 2023

Gazettal Date: 00/00/0000

Geocentric Datum of Australia (GDA2020 / MGA zone 56)



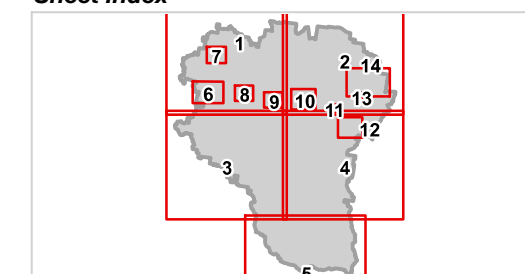
Date: 19/6/2023

Approx Scale @ A3: 1:10,000

0 0.5



**Sheet Index**







REGIONAL COUNCIL

OM03C Biodiversity - Wetlands overlay map

SOMERSET REGIONAL

Matters of State Environmental Significance

Wetlands

Matters of Local Environmental Significance

Wetlands

Separation Areas

Separation Area

Waterways

Stream order 1 and 2

Stream order 3 and 4

Stream order 5 and greater

Other Features

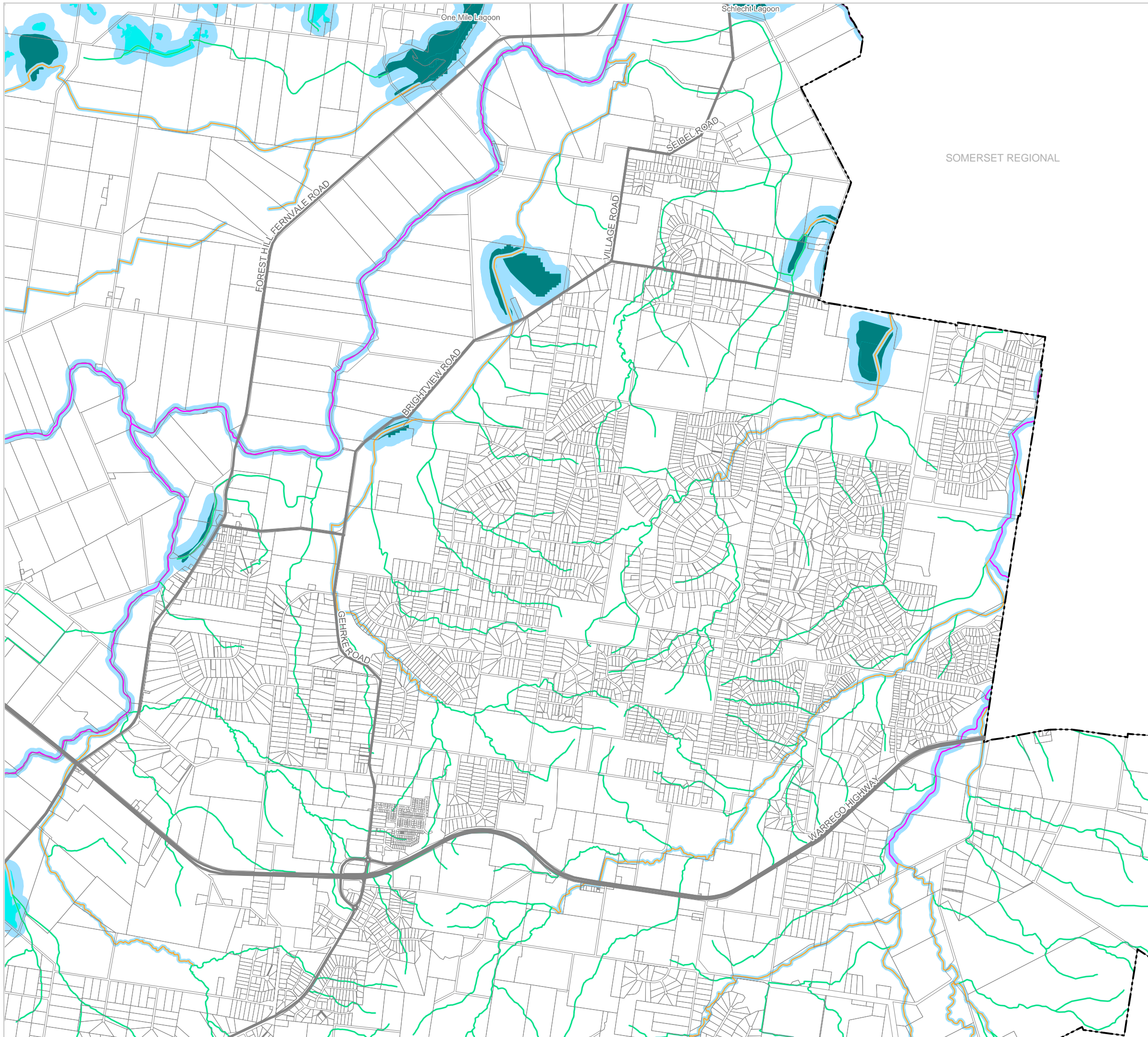
Major Road

Railway Network

Property Boundary

Local Government Boundary

Watercourse or Waterbody



NOTE

Refer to online or electronic mapping where layers overlap or labels obstruct the data on the map.

MAP INFORMATION

Based on or contains data sourced from the State Government which gives no warranty in relation to the data (including accuracy, reliability, completeness or suitability) and accepts no liability (including without limitation, liability in negligence) for any loss, damage or costs (including consequential damage) relating to any use of the data.  
© Copyright Lockyer Valley Regional Council 2023

DATA SOURCES

Cadastral data weekly - whole of State Queensland, Rail network - Queensland, Baseline roads and tracks - Queensland: © State of Queensland (Department of Resources) 2023. MSES - High ecological significance wetlands, MSES - High ecological value waters - wetlands: © State of Queensland (Department of Environment and Science) 2023

Gazettal Date: 00/00/0000

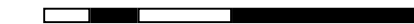
Geocentric Datum of Australia (GDA2020 / MGA zone 56)

Date: 19/6/2023

Approx Scale @ A3: 1:40,000

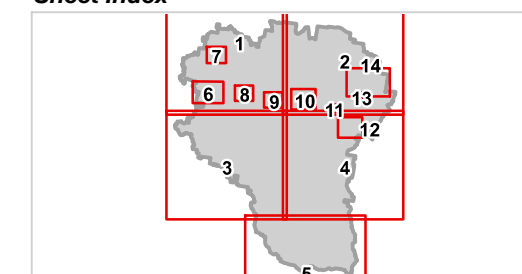


0 2



kilometres

Sheet Index



OM03C Biodiversity - Wetlands overlay  
Regency Downs-14