



# Lockyer Valley Regional Council Draft Planning Scheme

REGIONAL COUNCIL

## OM06 Extractive resources overlay map

### Extractive resources

- KR1 - Resource processing area
- KR2 - Resource processing separation area
- KR3 - Transport route
- KR4 - Transport route separation area
- Mining lease

### Other Features

- Major Road
- Railway Network
- Cadastral Lots
- Local Government Boundary
- Watercourse or Waterbody

### NOTES

Refer to online or electronic mapping where layers overlap or labels obstruct the data on the map.  
 Details of mining tenements in the Lockyer Valley may be obtained from the Chief Executive of the Department in which the Mineral Resources Act 1989 is administered. The location of all mining claims, mineral development licences, and mining leases can be viewed on the Queensland Governments GeoResGlobe mapping website at: <https://georesglobe.information.qld.gov.au/>

### MAP INFORMATION

Based on or contains data sourced from the State Government which gives no warranty in relation to the data (including accuracy, reliability, completeness or suitability) and accepts no liability (including without limitation, liability in negligence) for any loss, damage or costs (including consequential damage) relating to any use of the data.  
 © Copyright Lockyer Valley Regional Council 2023

### DATA SOURCES

Cadastral data weekly - whole of State Queensland, Rail network - Queensland, Baseline roads and tracks - Queensland, Mining leases - Queensland, Key Resource Areas - Queensland: © State of Queensland (Department of Resources) 2023.

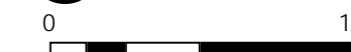
Gazettal Date: 00/00/0000

Geocentric Datum of Australia (GDA2020 / MGA zone 56)

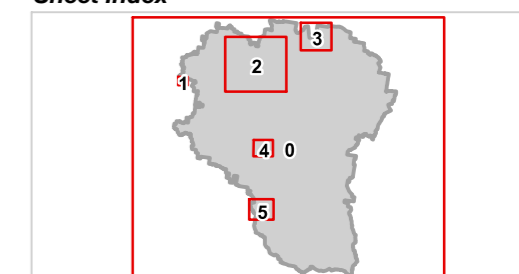


Date: 15/6/2023

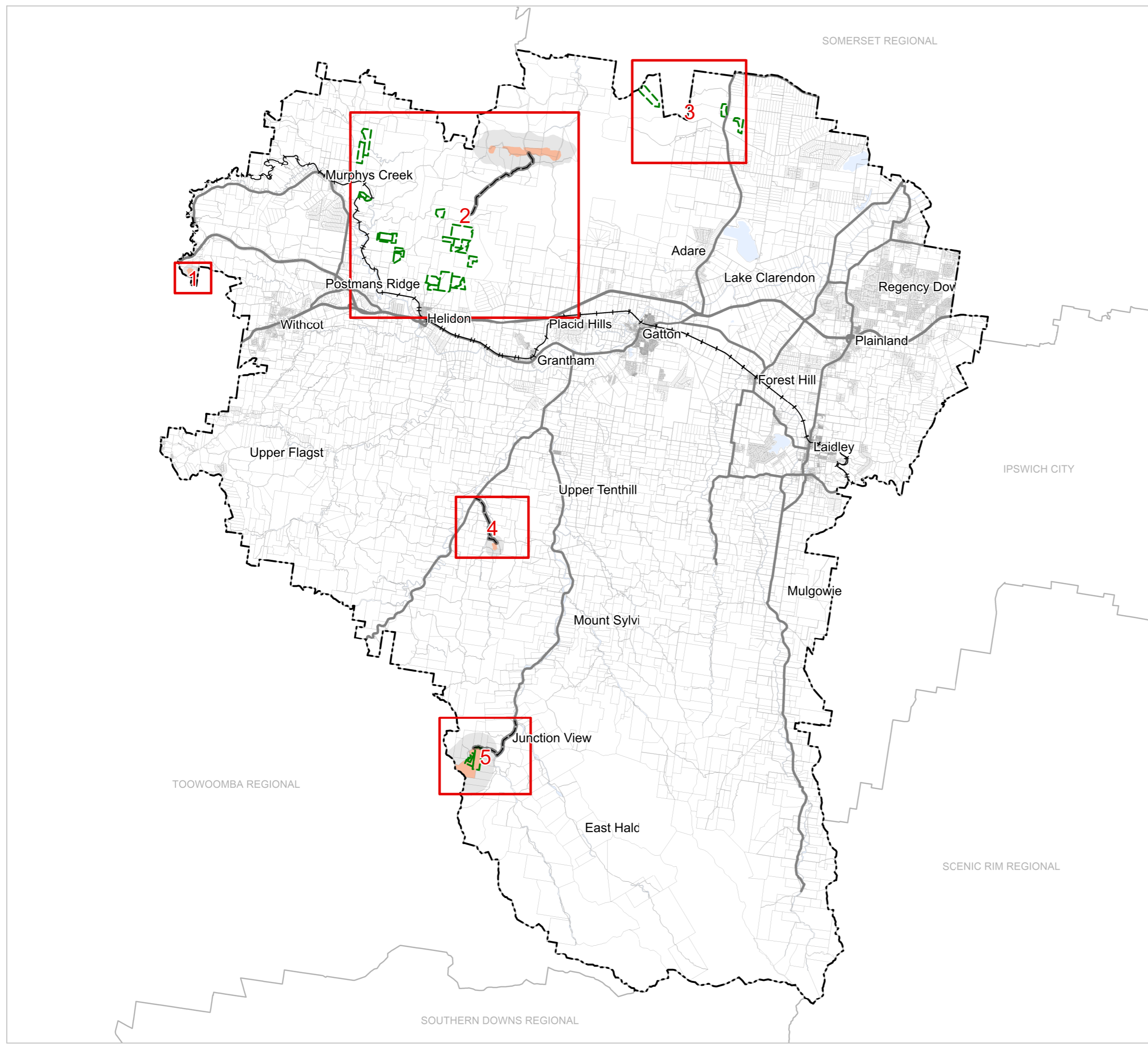
Approx Scale @ A3: 1:250,000



### Sheet Index



OM06 Extractive resources overlay  
Index - 00



SOMERSET REGIONAL

IPSWICH CITY

TOOWOOMBA REGIONAL

SCENIC RIM REGIONAL

SOUTHERN DOWNS REGIONAL








# Lockyer Valley Regional Council Draft Planning Scheme


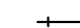



REGIONAL COUNCIL

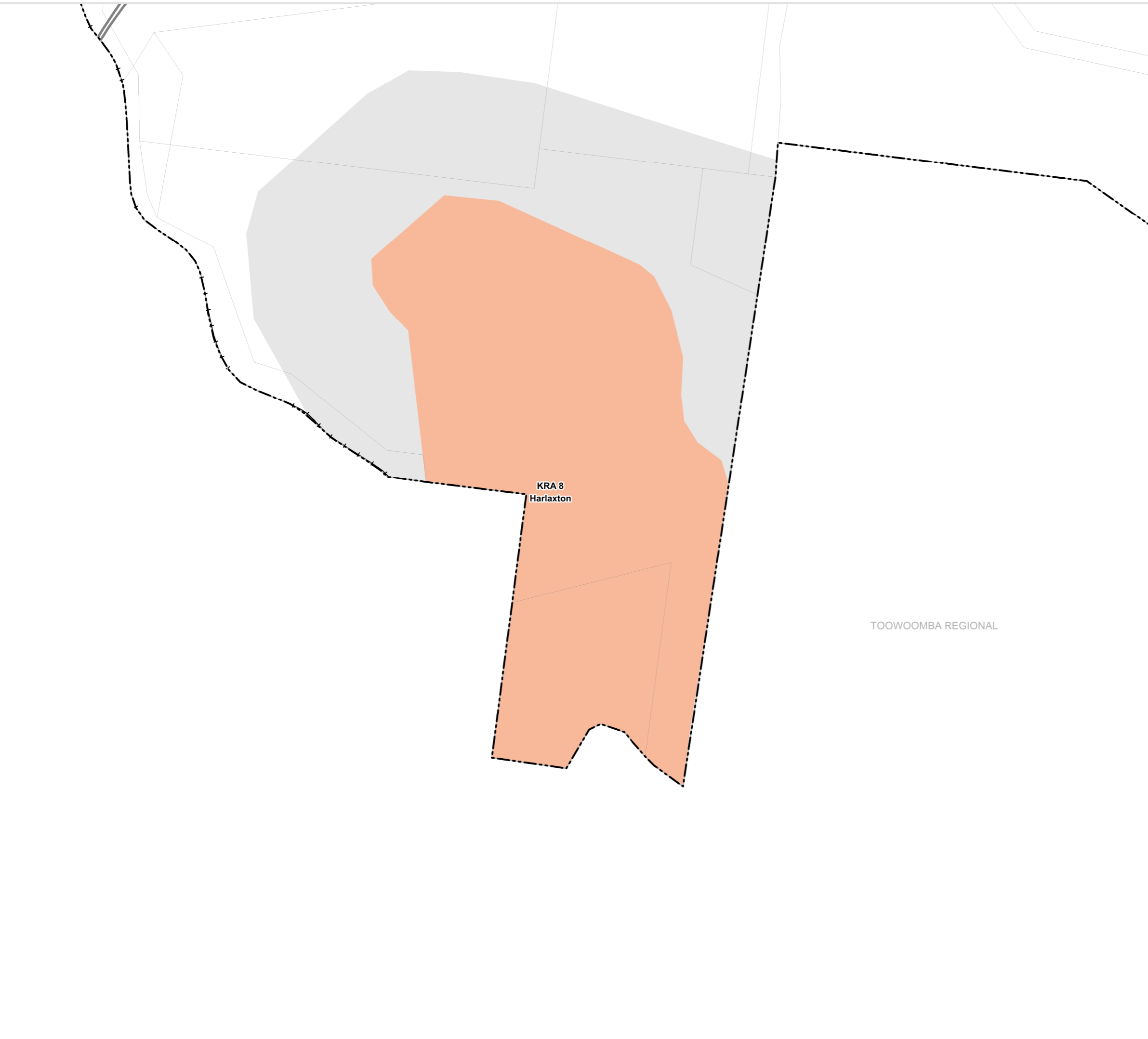
## OM6 Extractive resources overlay map

### Extractive resources

-  KR1 - Resource processing area
-  KR2 - Resource processing separation area
-  KR3 - Transport route
-  KR4 - Transport route separation area
-  Mining lease

### Other Features

-  Major Road
-  Railway Network
-  Cadastral\_Lots
-  Local Government Boundary
-  Watercourse or Waterbody



### NOTES

Refer to online or electronic mapping where layers overlap or labels obstruct the data on the map.  
 Details of mining tenements in the Lockyer Valley may be obtained from the Chief Executive of the Department in which the Mineral Resources Act 1989 is administered. The location of all mining claims, mineral development licences, and mining leases can be viewed on the Queensland Governments GeoResGlobe mapping website at:  
<https://georesglobe.information.qld.gov.au/>

### MAP INFORMATION

Based on or contains data sourced from the State Government which gives no warranty in relation to the data (including accuracy, reliability, completeness or suitability) and accepts no liability (including without limitation, liability in negligence) for any loss, damage or costs (including consequential damage) relating to any use of the data.  
 © Copyright Lockyer Valley Regional Council 2023

### DATA SOURCES

Cadastral data weekly - whole of State Queensland, Rail network - Queensland, Baseline roads and tracks - Queensland, Mining leases - Queensland, Key Resource Areas - Queensland: © State of Queensland (Department of Resources) 2023.

Gazettal Date: 00/00/0000

Geocentric Datum of Australia (GDA2020 / MGA zone 56)



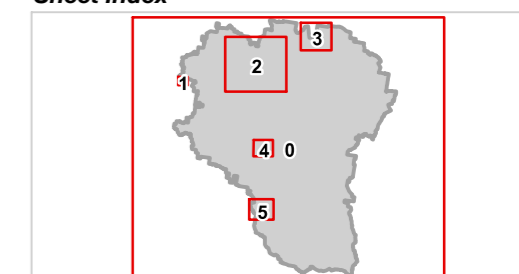
Date: 15/6/2023

Approx Scale @ A3: 1:7,500

0 0.5

kilometres

### Sheet Index



OM6 Extractive resources overlay  
Ballard - 01








# Lockyer Valley Regional Council Draft Planning Scheme






REGIONAL COUNCIL

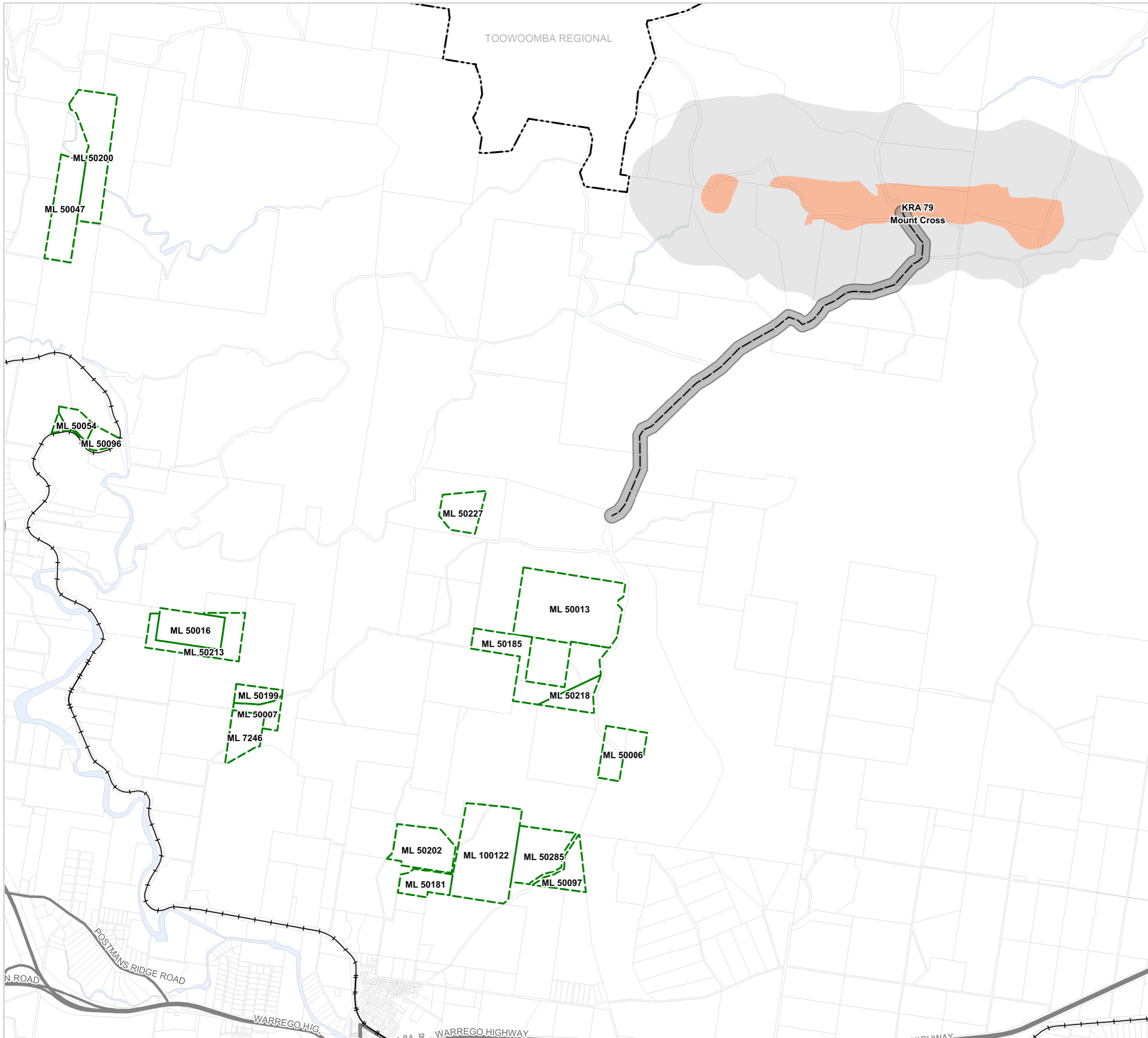
## OM06 Extractive resources overlay map

### Extractive resources

-  KR1 - Resource processing area
-  KR2 - Resource processing separation area
-  KR3 - Transport route
-  KR4 - Transport route separation area
-  Mining lease

### Other Features

-  Major Road
-  Railway Network
-  Cadastral\_Lots
-  Local Government Boundary
-  Watercourse or Waterbody



### NOTES

Refer to online or electronic mapping where layers overlap or labels obstruct the data on the map.  
 Details of mining tenements in the Lockyer Valley may be obtained from the Chief Executive of the Department in which the Mineral Resources Act 1989 is administered. The location of all mining claims, mineral development licences, and mining leases can be viewed on the Queensland Governments GeoResGlobe mapping website at: <https://georesglobe.information.qld.gov.au/>

### MAP INFORMATION

Based on or contains data sourced from the State Government which gives no warranty in relation to the data (including accuracy, reliability, completeness or suitability) and accepts no liability (including without limitation, liability in negligence) for any loss, damage or costs (including consequential damage) relating to any use of the data.  
 © Copyright Lockyer Valley Regional Council 2023

### DATA SOURCES

Cadastral data weekly - whole of State Queensland, Rail network - Queensland, Baseline roads and tracks - Queensland, Mining leases - Queensland, Key Resource Areas - Queensland: © State of Queensland (Department of Resources) 2023.

Gazettal Date: 00/00/0000

Geocentric Datum of Australia (GDA2020 / MGA zone 56)

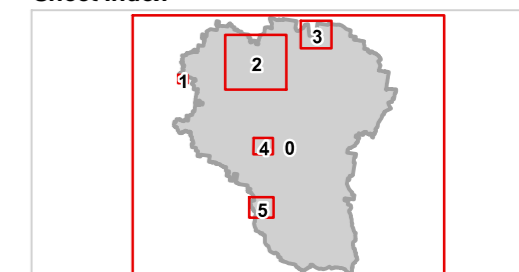


Date: 15/6/2023

Approx Scale @ A3: 1:50,000



### Sheet Index



OM6 Extractive resources overlay  
Seventeen Mile - 02



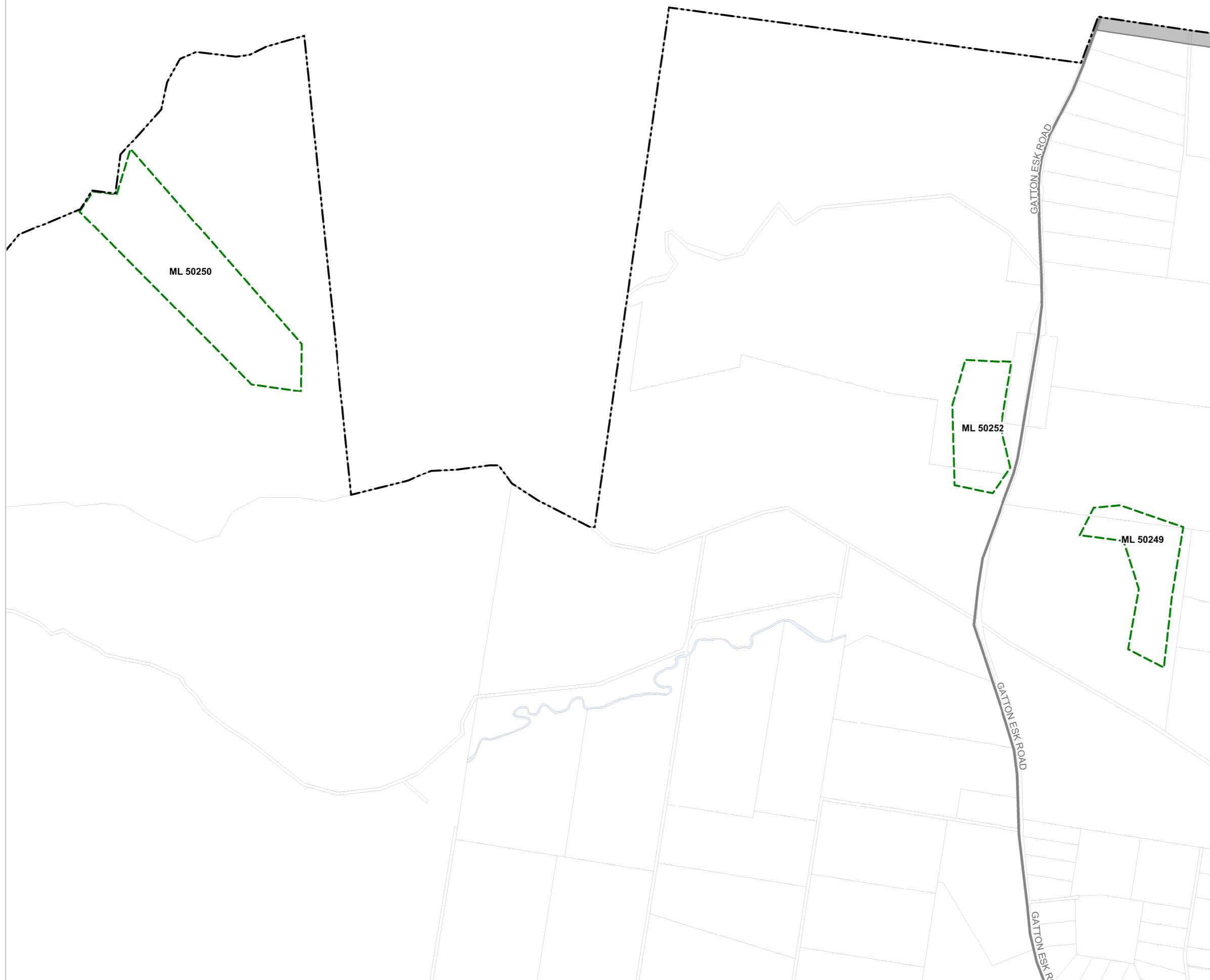
OM06 Extractive resources overlay map

Extractive resources

- KR1 - Resource processing area
- KR2 - Resource processing separation area
- KR3 - Transport route
- KR4 - Transport route separation area
- Mining lease

Other Features

- Major Road
- Railway Network
- Cadastral\_Lots
- Local Government Boundary
- Watercourse or Waterbody



NOTES

Refer to online or electronic mapping where layers overlap or labels obstruct the data on the map.  
 Details of mining tenements in the Lockyer Valley may be obtained from the Chief Executive of the Department in which the Mineral Resources Act 1989 is administered. The location of all mining claims, mineral development licences, and mining leases can be viewed on the Queensland Governments GeoResGlobe mapping website at: <https://georesglobe.information.qld.gov.au/>

MAP INFORMATION

Based on or contains data sourced from the State Government which gives no warranty in relation to the data (including accuracy, reliability, completeness or suitability) and accepts no liability (including without limitation, liability in negligence) for any loss, damage or costs (including consequential damage) relating to any use of the data.  
 © Copyright Lockyer Valley Regional Council 2023

DATA SOURCES

Cadastral data weekly - whole of State Queensland, Rail network - Queensland, Baseline roads and tracks - Queensland, Mining leases - Queensland, Key Resource Areas - Queensland: © State of Queensland (Department of Resources) 2023.

Gazettal Date: 00/00/0000

Geocentric Datum of Australia (GDA2020 / MGA zone 56)

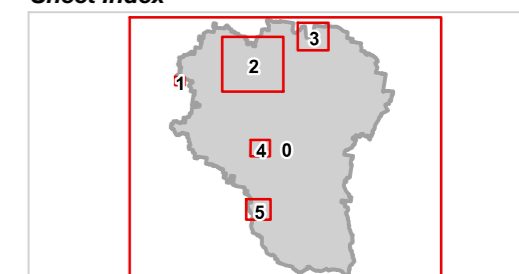


Date: 15/6/2023

Approx Scale @ A3: 1:25,000



Sheet Index





# Lockyer Valley Regional Council Draft Planning Scheme

REGIONAL COUNCIL

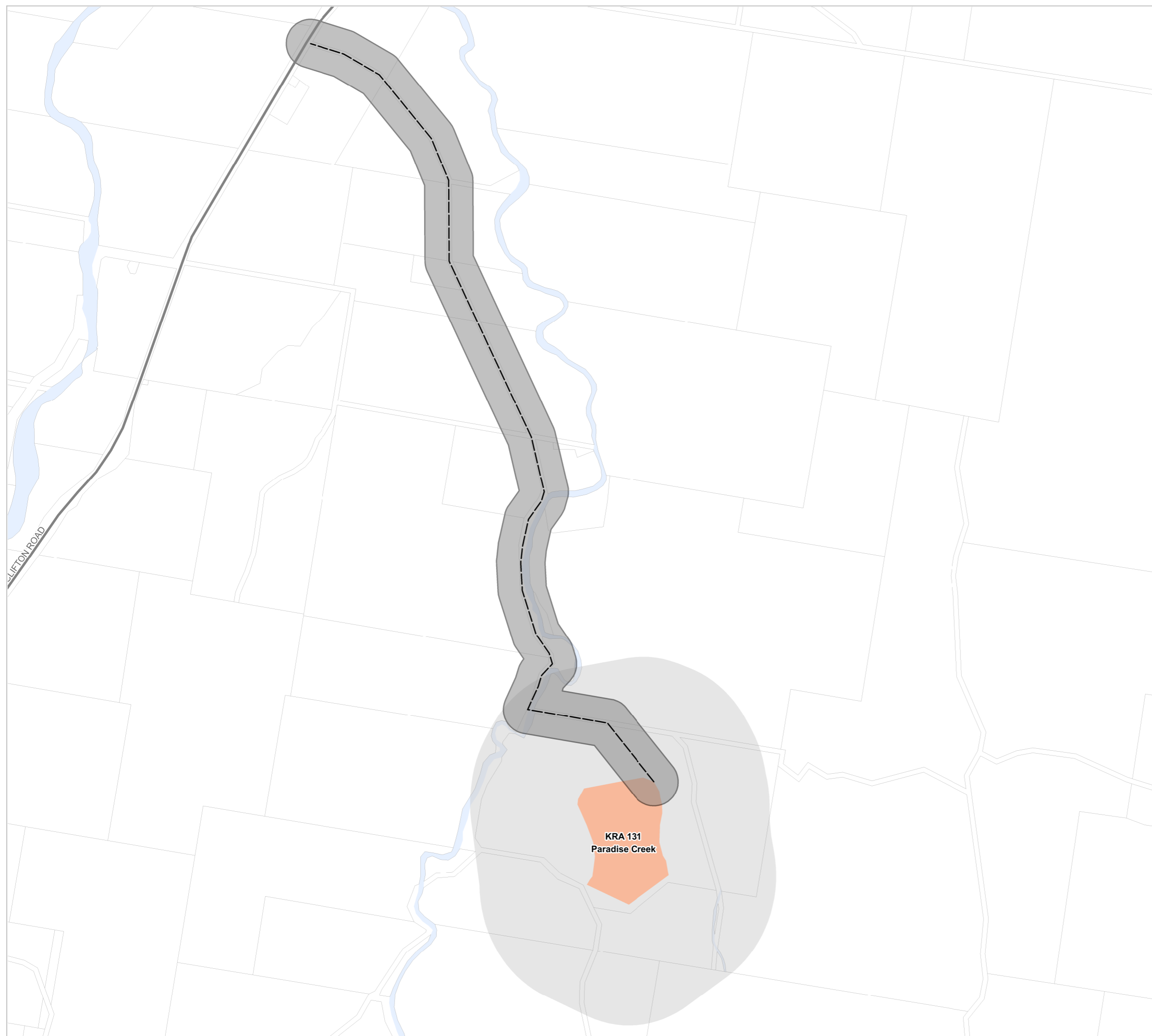
## OM06 Extractive resources overlay map

### Extractive resources

- KR1 - Resource processing area
- KR2 - Resource processing separation area
- KR3 - Transport route
- KR4 - Transport route separation area
- Mining lease

### Other Features

- Major Road
- Railway Network
- Cadastral\_Lots
- Local Government Boundary
- Watercourse or Waterbody



### NOTES

Refer to online or electronic mapping where layers overlap or labels obstruct the data on the map.  
 Details of mining tenements in the Lockyer Valley may be obtained from the Chief Executive of the Department in which the Mineral Resources Act 1989 is administered. The location of all mining claims, mineral development licences, and mining leases can be viewed on the Queensland Governments GeoResGlobe mapping website at: <https://georesglobe.information.qld.gov.au/>

### MAP INFORMATION

Based on or contains data sourced from the State Government which gives no warranty in relation to the data (including accuracy, reliability, completeness or suitability) and accepts no liability (including without limitation, liability in negligence) for any loss, damage or costs (including consequential damage) relating to any use of the data.  
 © Copyright Lockyer Valley Regional Council 2023

### DATA SOURCES

Cadastral data weekly - whole of State Queensland, Rail network - Queensland, Baseline roads and tracks - Queensland, Mining leases - Queensland, Key Resource Areas - Queensland: © State of Queensland (Department of Resources) 2023.

Gazettal Date: 00/00/0000

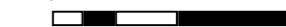
Geocentric Datum of Australia (GDA2020 / MGA zone 56)



Date: 15/6/2023

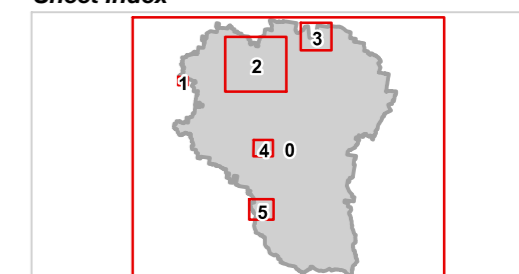
Approx Scale @ A3: 1:15,000

0 0.5



kilometres

### Sheet Index



OM6 Extractive resources overlay  
Upper Tenthill - 04



# Lockyer Valley Regional Council Draft Planning Scheme

REGIONAL COUNCIL

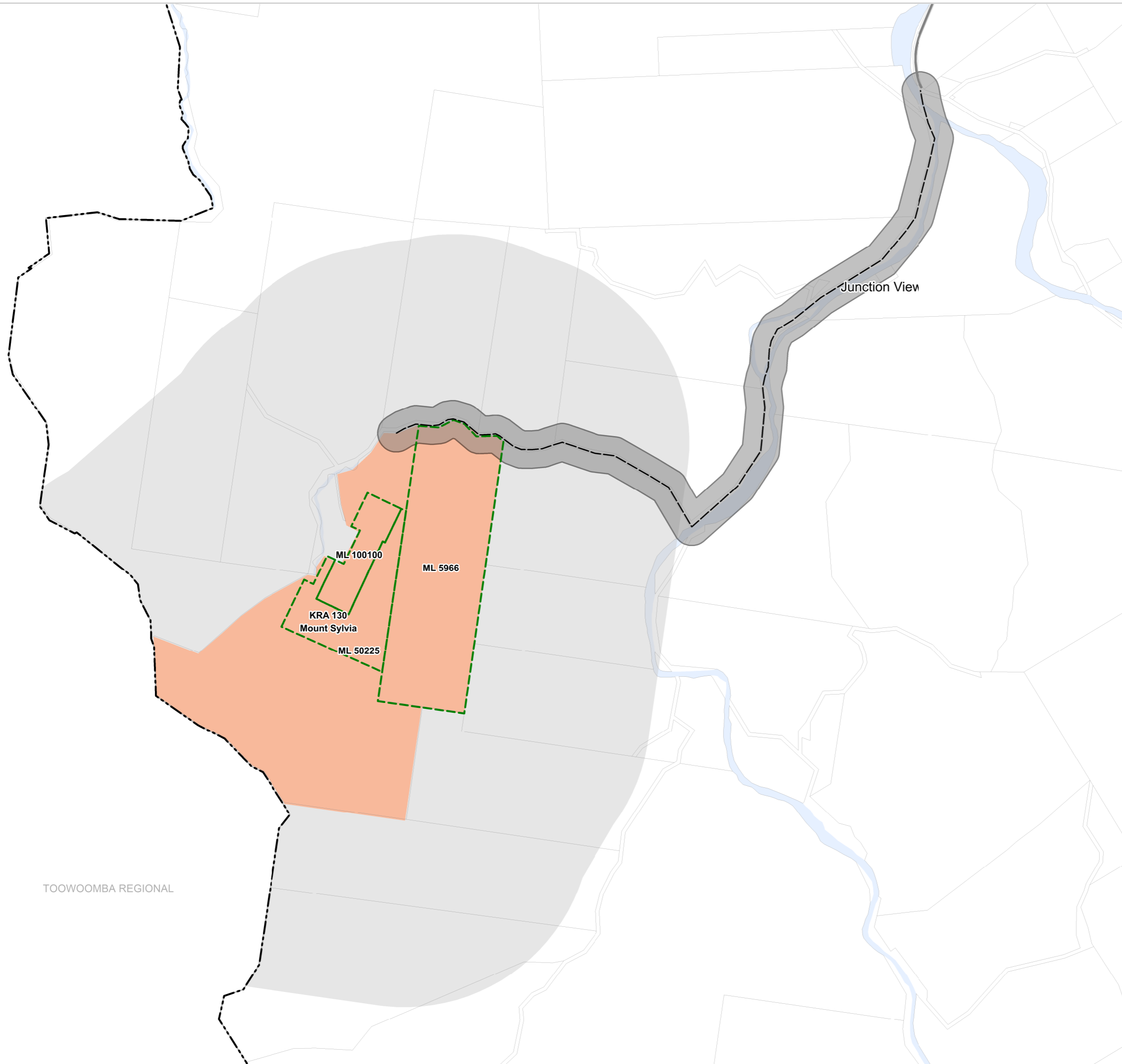
## OM6 Extractive resources overlay map

### Extractive resources

- KR1 - Resource processing area
- KR2 - Resource processing separation area
- KR3 - Transport route
- KR4 - Transport route separation area
- Mining lease

### Other Features

- Major Road
- Railway Network
- Cadastral\_Lots
- Local Government Boundary
- Watercourse or Waterbody



### NOTES

Refer to online or electronic mapping where layers overlap or labels obstruct the data on the map.  
 Details of mining tenements in the Lockyer Valley may be obtained from the Chief Executive of the Department in which the Mineral Resources Act 1989 is administered. The location of all mining claims, mineral development licences, and mining leases can be viewed on the Queensland Governments GeoResGlobe mapping website at:  
<https://georesglobe.information.qld.gov.au/>

### MAP INFORMATION

Based on or contains data sourced from the State Government which gives no warranty in relation to the data (including accuracy, reliability, completeness or suitability) and accepts no liability (including without limitation, liability in negligence) for any loss, damage or costs (including consequential damage) relating to any use of the data.  
 © Copyright Lockyer Valley Regional Council 2023

### DATA SOURCES

Cadastral data weekly - whole of State Queensland, Rail network - Queensland, Baseline roads and tracks - Queensland, Mining leases - Queensland, Key Resource Areas - Queensland: © State of Queensland (Department of Resources) 2023.

Gazettal Date: 00/00/0000

Geocentric Datum of Australia (GDA2020 / MGA zone 56)

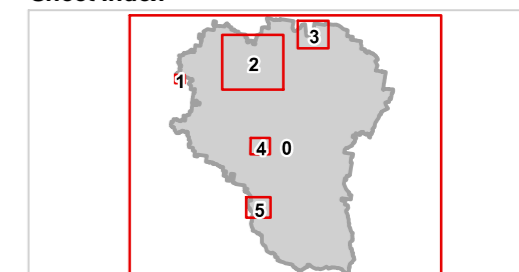


Date: 15/6/2023

Approx Scale @ A3: 1:20,000



### Sheet Index



OM6 Extractive resources overlay  
Junction View - 05