



REGIONAL COUNCIL

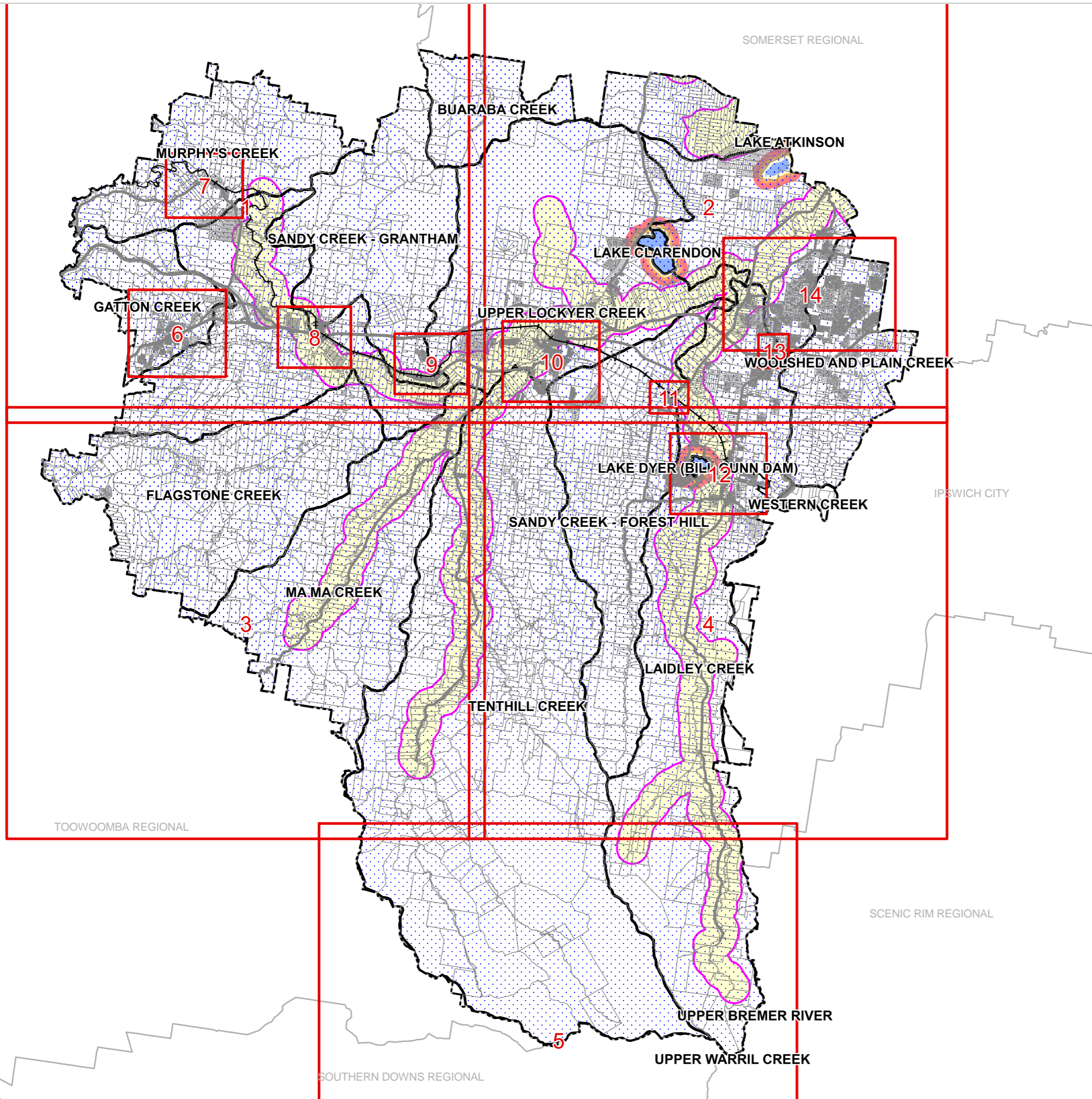
OM12B Waterways and water resource catchment - water resource catchment overlay map

Water Resources

- Bulk water supply storage
- Bulk water supply storage buffer (200m)
- Bulk water supply storage buffer (400m)
- Bulk water supply storage buffer (800m)
- Water supply buffer area
- Lockyer Creek water resource catchment
- Lockyer Creek water sub-catchments

Other Features

- Major Road
- Railway Network
- Cadastral\_Lots
- Local Government Boundary



NOTE

Refer to online or electronic mapping where layers overlap or labels obstruct the data on the map.

MAP INFORMATION

Based on or contains data sourced from the State Government which gives no warranty in relation to the data (including accuracy, reliability, completeness or suitability) and accepts no liability (including without limitation, liability in negligence) for any loss, damage or costs (including consequential damage) relating to any use of the data.

© Copyright Lockyer Valley Regional Council 2023

DATA SOURCES

Cadastral data weekly - whole of State Queensland, Rail network - Queensland, Baseline roads and tracks - Queensland: © State of Queensland (Department of Resources) 2023. Water plan catchments - Queensland, Lockyer Creek water sub-catchments: © State of Queensland (Department of Environment and Science) 2020.

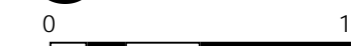
Gazettal Date: 00/00/0000

Geocentric Datum of Australia (GDA2020 / MGA zone 56)



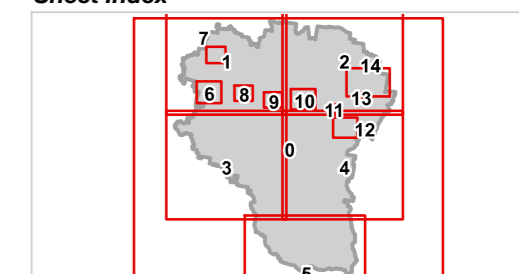
Date: 19/6/2023

Approx Scale @ A3: 1:250,000



kilometres

Sheet Index





REGIONAL COUNCIL

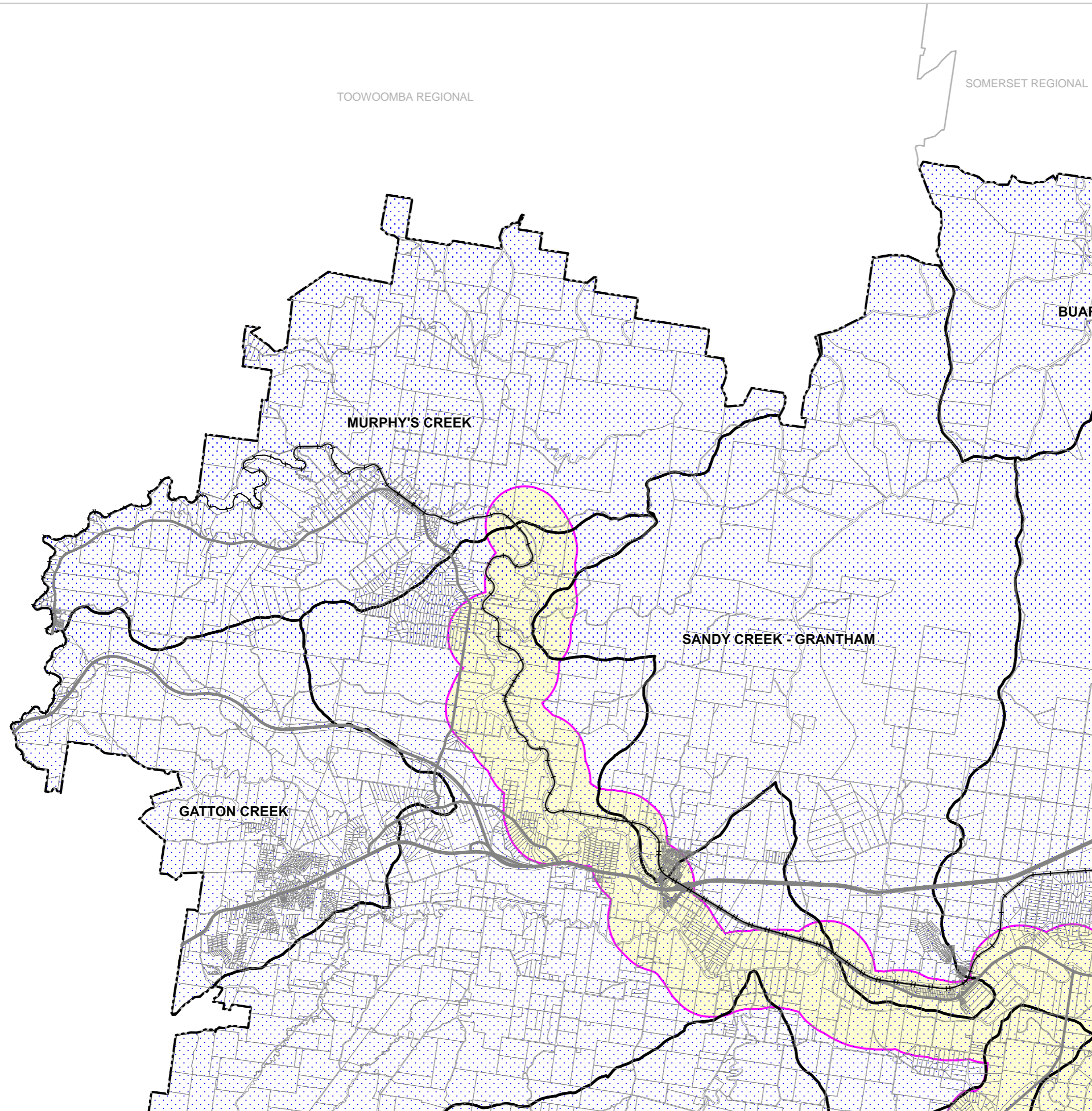
OM12B Waterways and water resource catchment - water resource catchment overlay map

Water Resources

- Bulk water supply storage
- Bulk water supply storage buffer (200m)
- Bulk water supply storage buffer (400m)
- Bulk water supply storage buffer (800m)
- Water supply buffer area
- Lockyer Creek water resource catchment
- Lockyer Creek water sub-catchments

Other Features

- Major Road
- Railway Network
- Cadastral\_Lots
- Local Government Boundary



NOTE

Refer to online or electronic mapping where layers overlap or labels obstruct the data on the map.

MAP INFORMATION

Based on or contains data sourced from the State Government which gives no warranty in relation to the data (including accuracy, reliability, completeness or suitability) and accepts no liability (including without limitation, liability in negligence) for any loss, damage or costs (including consequential damage) relating to any use of the data.  
© Copyright Lockyer Valley Regional Council 2023

DATA SOURCES

Cadastral data weekly - whole of State Queensland, Rail network - Queensland, Baseline roads and tracks - Queensland: © State of Queensland (Department of Resources) 2023. Water plan catchments - Queensland, Lockyer Creek water sub-catchments: © State of Queensland (Department of Environment and Science) 2020.

Gazettal Date: 00/00/0000

Geocentric Datum of Australia (GDA2020 / MGA zone 56)

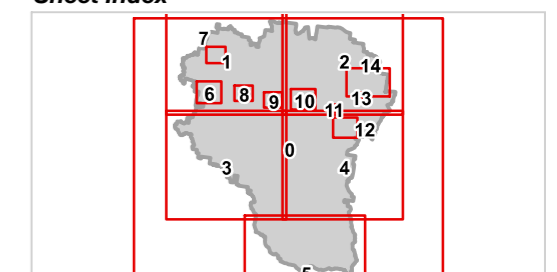


Date: 19/6/2023

Approx Scale @ A3: 1:100,000



Sheet Index





REGIONAL COUNCIL

SOMERSET REGIONAL

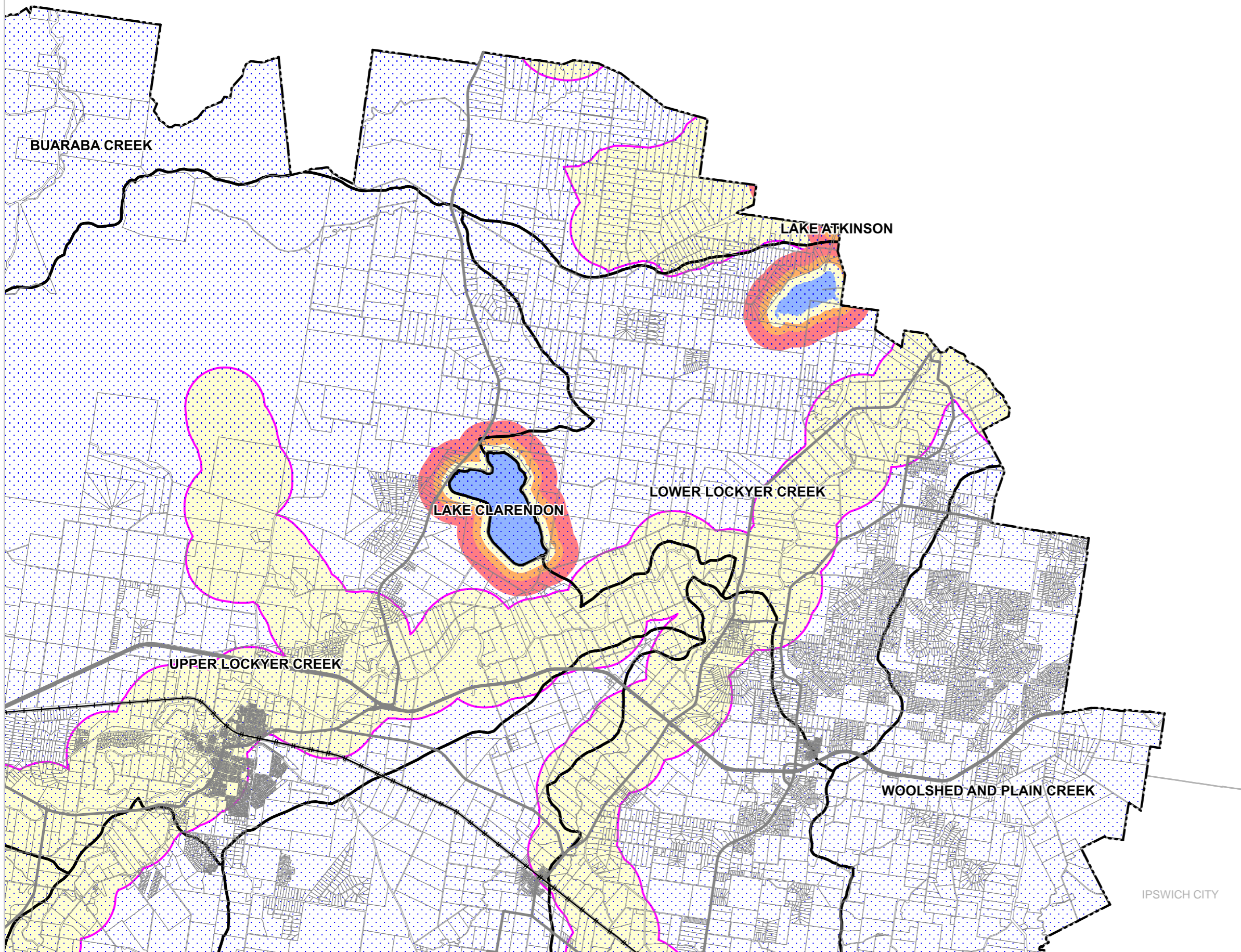
**OM12B Waterways and water resource catchment - water resource catchment overlay map**

**Water Resources**

- Bulk water supply storage
- Bulk water supply storage buffer (200m)
- Bulk water supply storage buffer (400m)
- Bulk water supply storage buffer (800m)
- Water supply buffer area
- Lockyer Creek water resource catchment
- Lockyer Creek water sub-catchments

**Other Features**

- Major Road
- Railway Network
- Cadastral\_Lots
- Local Government Boundary



**NOTE**

Refer to online or electronic mapping where layers overlap or labels obstruct the data on the map.

**MAP INFORMATION**

Based on or contains data sourced from the State Government which gives no warranty in relation to the data (including accuracy, reliability, completeness or suitability) and accepts no liability (including without limitation, liability in negligence) for any loss, damage or costs (including consequential damage) relating to any use of the data.  
© Copyright Lockyer Valley Regional Council 2023

**DATA SOURCES**

Cadastral data weekly - whole of State Queensland, Rail network - Queensland, Baseline roads and tracks - Queensland: © State of Queensland (Department of Resources) 2023. Water plan catchments - Queensland, Lockyer Creek water sub-catchments: © State of Queensland (Department of Environment and Science) 2020.

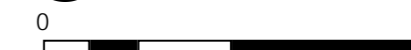
Gazettal Date: 00/00/0000

Geocentric Datum of Australia (GDA2020 / MGA zone 56)

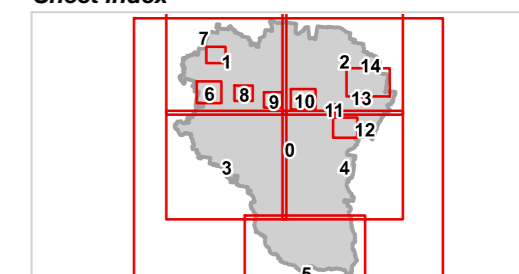


Date: 19/6/2023

Approx Scale @ A3: 1:100,000



**Sheet Index**



IPSWICH CITY



REGIONAL COUNCIL

**OM12B Waterways and water resource  
catchment - water resource catchment  
overlay map**

**Water Resources**

- Bulk water supply storage
- Bulk water supply storage buffer (200m)
- Bulk water supply storage buffer (400m)
- Bulk water supply storage buffer (800m)
- Water supply buffer area
- Lockyer Creek water resource catchment
- Lockyer Creek water sub-catchments

**Other Features**

- Major Road
- Railway Network
- Cadastral\_Lots
- Local Government Boundary

**NOTE**

Refer to online or electronic mapping where layers overlap or labels obstruct the data on the map.

**MAP INFORMATION**

Based on or contains data sourced from the State Government which gives no warranty in relation to the data (including accuracy, reliability, completeness or suitability) and accepts no liability (including without limitation, liability in negligence) for any loss, damage or costs (including consequential damage) relating to any use of the data.  
© Copyright Lockyer Valley Regional Council 2023

**DATA SOURCES**

Cadastral data weekly - whole of State Queensland, Rail network - Queensland, Baseline roads and tracks - Queensland: © State of Queensland (Department of Resources) 2023.  
Water plan catchments - Queensland, Lockyer Creek water sub-catchments: © State of Queensland (Department of Environment and Science) 2020.

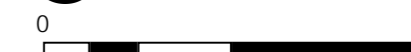
Gazettal Date: 00/00/0000

Geocentric Datum of Australia (GDA2020 / MGA zone 56)

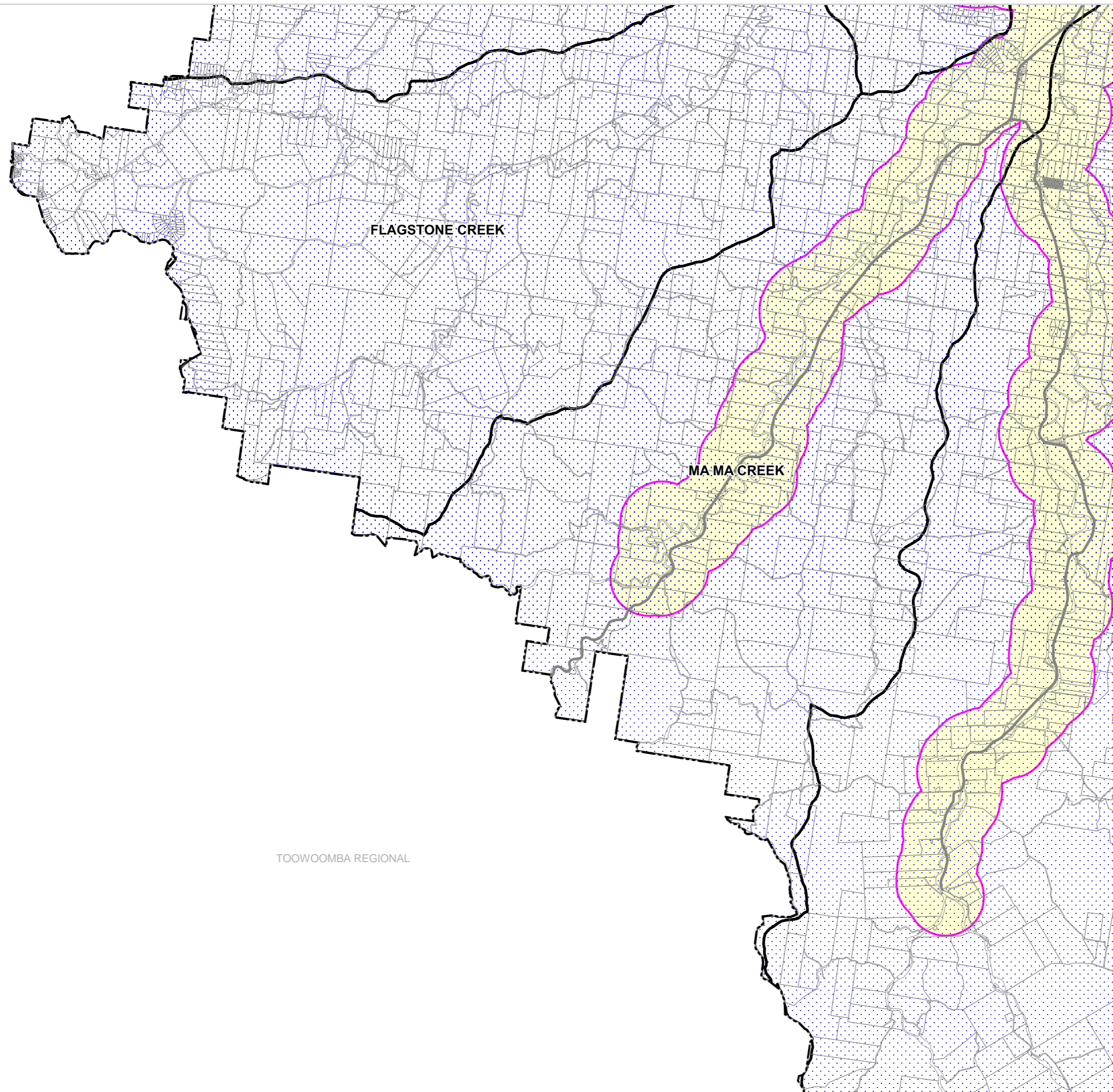
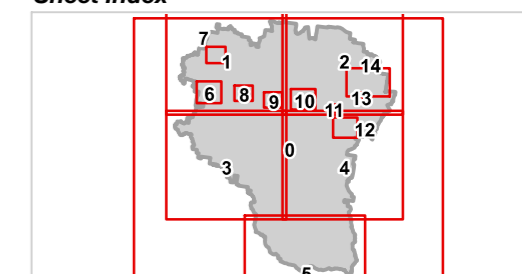


Date: 19/6/2023

Approx Scale @ A3: 1:100,000



**Sheet Index**





REGIONAL COUNCIL

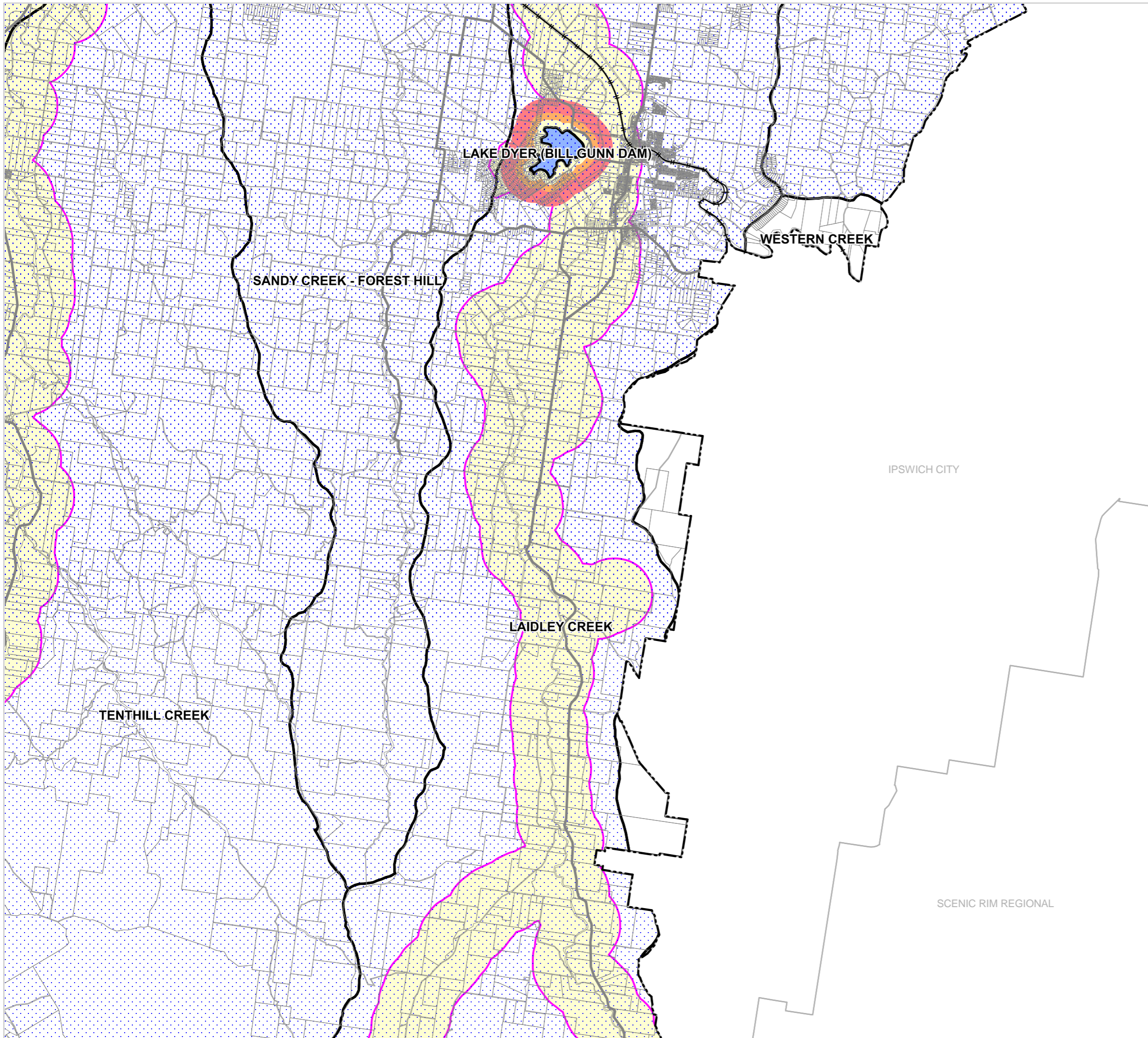
### OM12B Waterways and water resource catchment - water resource catchment overlay map

#### Water Resources

- Bulk water supply storage
- Bulk water supply storage buffer (200m)
- Bulk water supply storage buffer (400m)
- Bulk water supply storage buffer (800m)
- Water supply buffer area
- Lockyer Creek water resource catchment
- Lockyer Creek water sub-catchments

#### Other Features

- Major Road
- Railway Network
- Cadastral Lots
- Local Government Boundary



#### NOTE

Refer to online or electronic mapping where layers overlap or labels obstruct the data on the map.

#### MAP INFORMATION

Based on or contains data sourced from the State Government which gives no warranty in relation to the data (including accuracy, reliability, completeness or suitability) and accepts no liability (including without limitation, liability in negligence) for any loss, damage or costs (including consequential damage) relating to any use of the data.  
© Copyright Lockyer Valley Regional Council 2023

#### DATA SOURCES

Cadastral data weekly - whole of State Queensland, Rail network - Queensland, Baseline roads and tracks - Queensland: © State of Queensland (Department of Resources) 2023.  
Water plan catchments - Queensland, Lockyer Creek water sub-catchments: © State of Queensland (Department of Environment and Science) 2020.

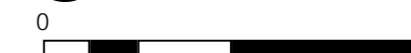
Gazettal Date: 00/00/0000

Geocentric Datum of Australia (GDA2020 / MGA zone 56)

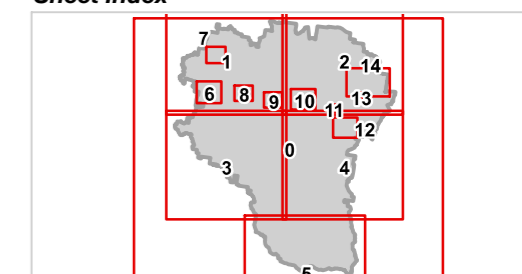


Date: 19/6/2023

Approx Scale @ A3: 1:100,000



#### Sheet Index





REGIONAL COUNCIL

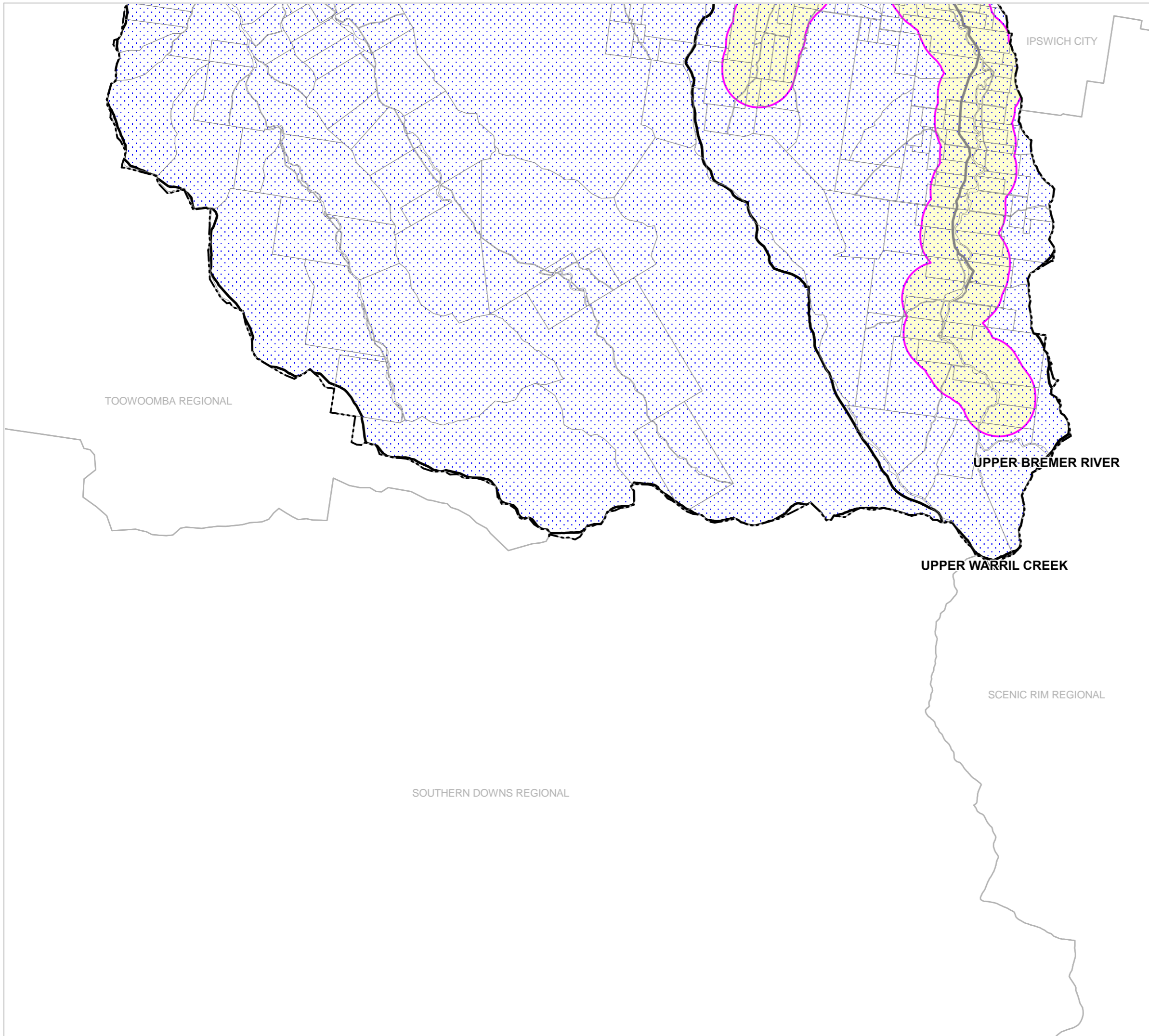
OM12B Waterways and water resource catchment - water resource catchment overlay map

Water Resources

- Bulk water supply storage
- Bulk water supply storage buffer (200m)
- Bulk water supply storage buffer (400m)
- Bulk water supply storage buffer (800m)
- Water supply buffer area
- Lockyer Creek water resource catchment
- Lockyer Creek water sub-catchments

Other Features

- Major Road
- Railway Network
- Cadastral\_Lots
- Local Government Boundary



NOTE

Refer to online or electronic mapping where layers overlap or labels obstruct the data on the map.

MAP INFORMATION

Based on or contains data sourced from the State Government which gives no warranty in relation to the data (including accuracy, reliability, completeness or suitability) and accepts no liability (including without limitation, liability in negligence) for any loss, damage or costs (including consequential damage) relating to any use of the data. © Copyright Lockyer Valley Regional Council 2023

DATA SOURCES

Cadastral data weekly - whole of State Queensland, Rail network - Queensland, Baseline roads and tracks - Queensland: © State of Queensland (Department of Resources) 2023. Water plan catchments - Queensland, Lockyer Creek water sub-catchments: © State of Queensland (Department of Environment and Science) 2020.

Gazettal Date: 00/00/0000

Geocentric Datum of Australia (GDA2020 / MGA zone 56)

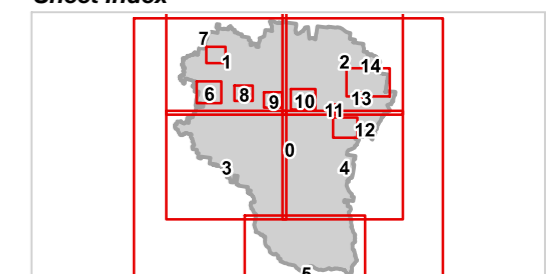


Date: 19/6/2023

Approx Scale @ A3: 1:100,000



Sheet Index





REGIONAL COUNCIL

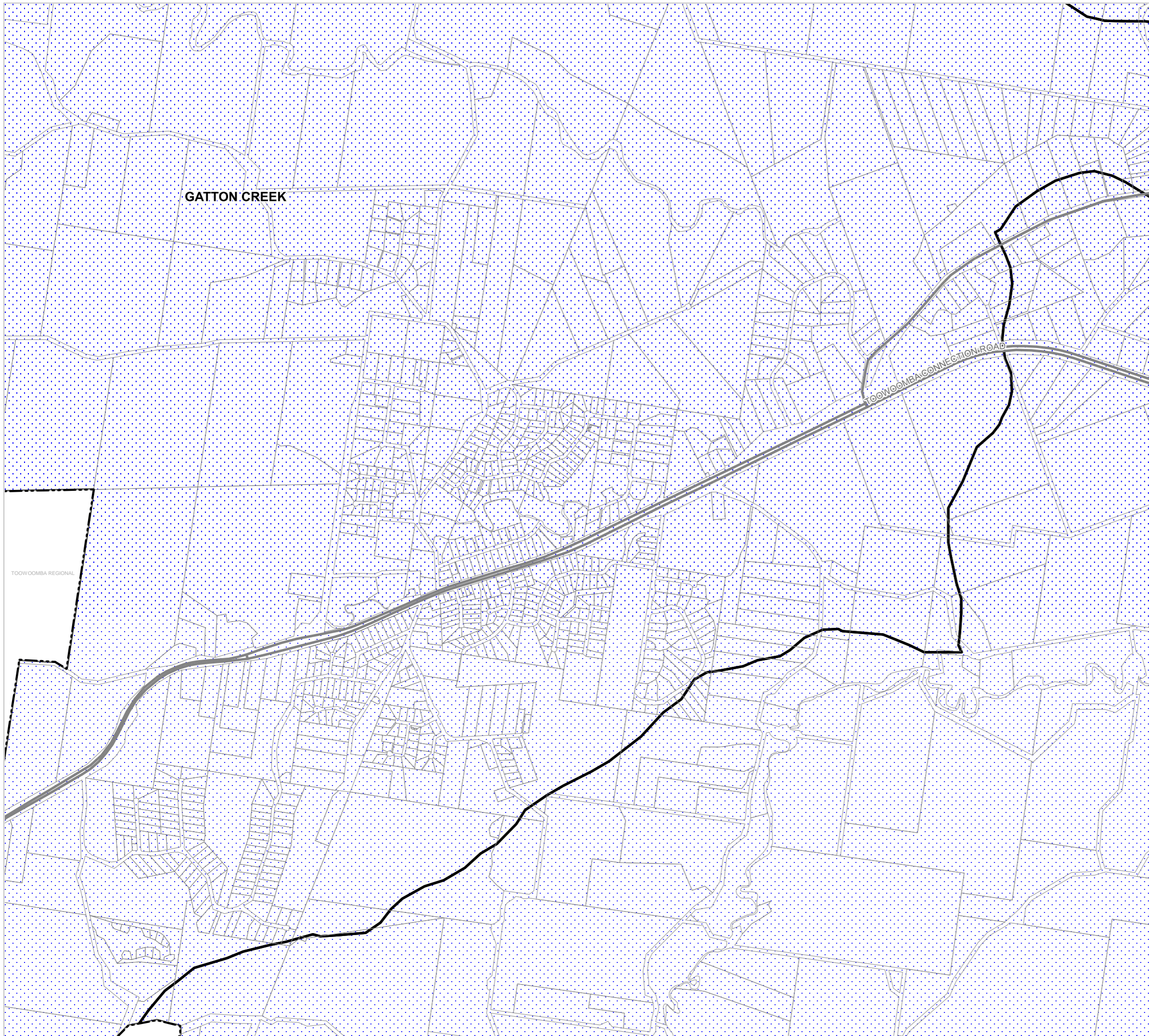
**OM12B Waterways and water resource catchment - water resource catchment overlay map**

**Water Resources**

- Bulk water supply storage
- Bulk water supply storage buffer (200m)
- Bulk water supply storage buffer (400m)
- Bulk water supply storage buffer (800m)
- Water supply buffer area
- Lockyer Creek water resource catchment
- Lockyer Creek water sub-catchments

**Other Features**

- Major Road
- Railway Network
- Cadastral\_Lots
- Local Government Boundary



**NOTE**

Refer to online or electronic mapping where layers overlap or labels obstruct the data on the map.

**MAP INFORMATION**

Based on or contains data sourced from the State Government which gives no warranty in relation to the data (including accuracy, reliability, completeness or suitability) and accepts no liability (including without limitation, liability in negligence) for any loss, damage or costs (including consequential damage) relating to any use of the data.  
© Copyright Lockyer Valley Regional Council 2023

**DATA SOURCES**

Cadastral data weekly - whole of State Queensland, Rail network - Queensland, Baseline roads and tracks - Queensland: © State of Queensland (Department of Resources) 2023.  
Water plan catchments - Queensland, Lockyer Creek water sub-catchments: © State of Queensland (Department of Environment and Science) 2020.

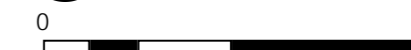
Gazettal Date: 00/00/0000

Geocentric Datum of Australia (GDA2020 / MGA zone 56)



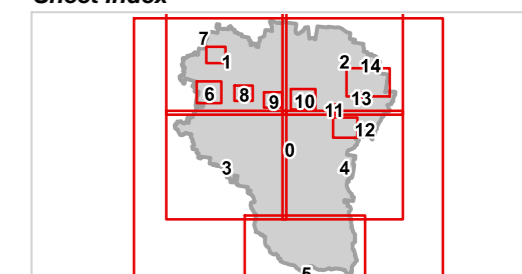
Date: 19/6/2023

Approx Scale @ A3: 1:20,000



kilometres

**Sheet Index**


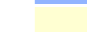










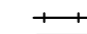


REGIONAL COUNCIL

**OM12B Waterways and water resource catchment - water resource catchment overlay map**

**Water Resources**

-  Bulk water supply storage
-  Bulk water supply storage buffer (200m)
-  Bulk water supply storage buffer (400m)
-  Bulk water supply storage buffer (800m)
-  Water supply buffer area
-  Lockyer Creek water resource catchment
-  Lockyer Creek water sub-catchments

**Other Features**

-  Major Road
-  Railway Network
-  Cadastral\_Lots
-  Local Government Boundary



**NOTE**

Refer to online or electronic mapping where layers overlap or labels obstruct the data on the map.

**MAP INFORMATION**

Based on or contains data sourced from the State Government which gives no warranty in relation to the data (including accuracy, reliability, completeness or suitability) and accepts no liability (including without limitation, liability in negligence) for any loss, damage or costs (including consequential damage) relating to any use of the data.  
© Copyright Lockyer Valley Regional Council 2023

**DATA SOURCES**

Cadastral data weekly - whole of State Queensland, Rail network - Queensland, Baseline roads and tracks - Queensland: © State of Queensland (Department of Resources) 2023.  
Water plan catchments - Queensland, Lockyer Creek water sub-catchments: © State of Queensland (Department of Environment and Science) 2020.

Gazettal Date: 00/00/0000

Geocentric Datum of Australia (GDA2020 / MGA zone 56)



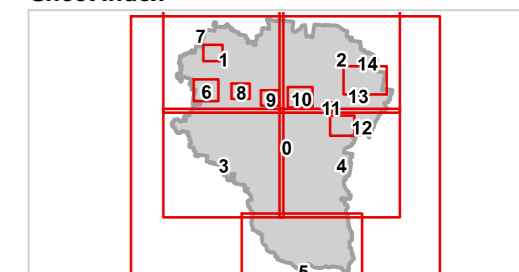
Date: 19/6/2023

Approx Scale @ A3: 1:15,000



kilometres

**Sheet Index**







REGIONAL COUNCIL

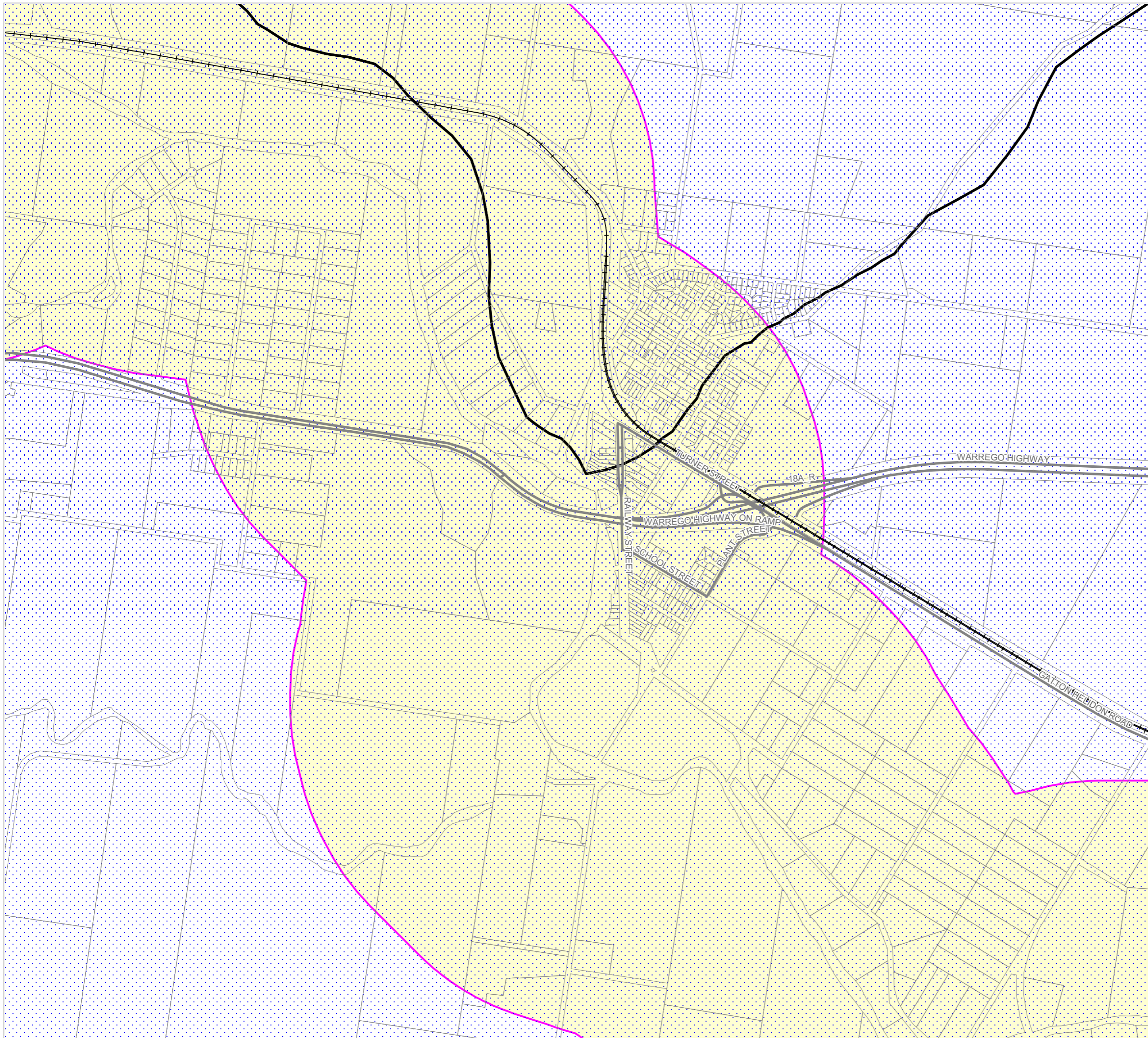
**OM12B Waterways and water resource  
catchment - water resource catchment  
overlay map**

**Water Resources**

- Bulk water supply storage
- Bulk water supply storage buffer (200m)
- Bulk water supply storage buffer (400m)
- Bulk water supply storage buffer (800m)
- Water supply buffer area
- Lockyer Creek water resource catchment
- Lockyer Creek water sub-catchments

**Other Features**

- Major Road
- Railway Network
- Cadastral\_Lots
- Local Government Boundary



**NOTE**

Refer to online or electronic mapping where layers overlap or labels obstruct the data on the map.

**MAP INFORMATION**

Based on or contains data sourced from the State Government which gives no warranty in relation to the data (including accuracy, reliability, completeness or suitability) and accepts no liability (including without limitation, liability in negligence) for any loss, damage or costs (including consequential damage) relating to any use of the data.  
© Copyright Lockyer Valley Regional Council 2023

**DATA SOURCES**

Cadastral data weekly - whole of State Queensland, Rail network - Queensland, Baseline roads and tracks - Queensland: © State of Queensland (Department of Resources) 2023.  
Water plan catchments - Queensland, Lockyer Creek water sub-catchments: © State of Queensland (Department of Environment and Science) 2020.

Gazettal Date: 00/00/0000

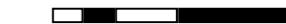
Geocentric Datum of Australia (GDA2020 / MGA zone 56)



Date: 19/6/2023

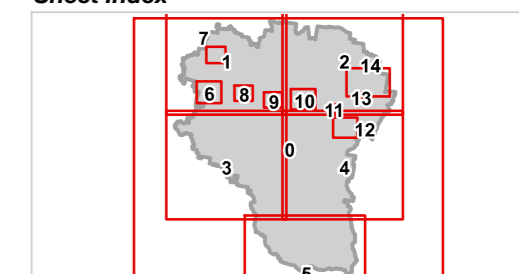
Approx Scale @ A3: 1:15,000

0 0.5



kilometres

**Sheet Index**





REGIONAL COUNCIL

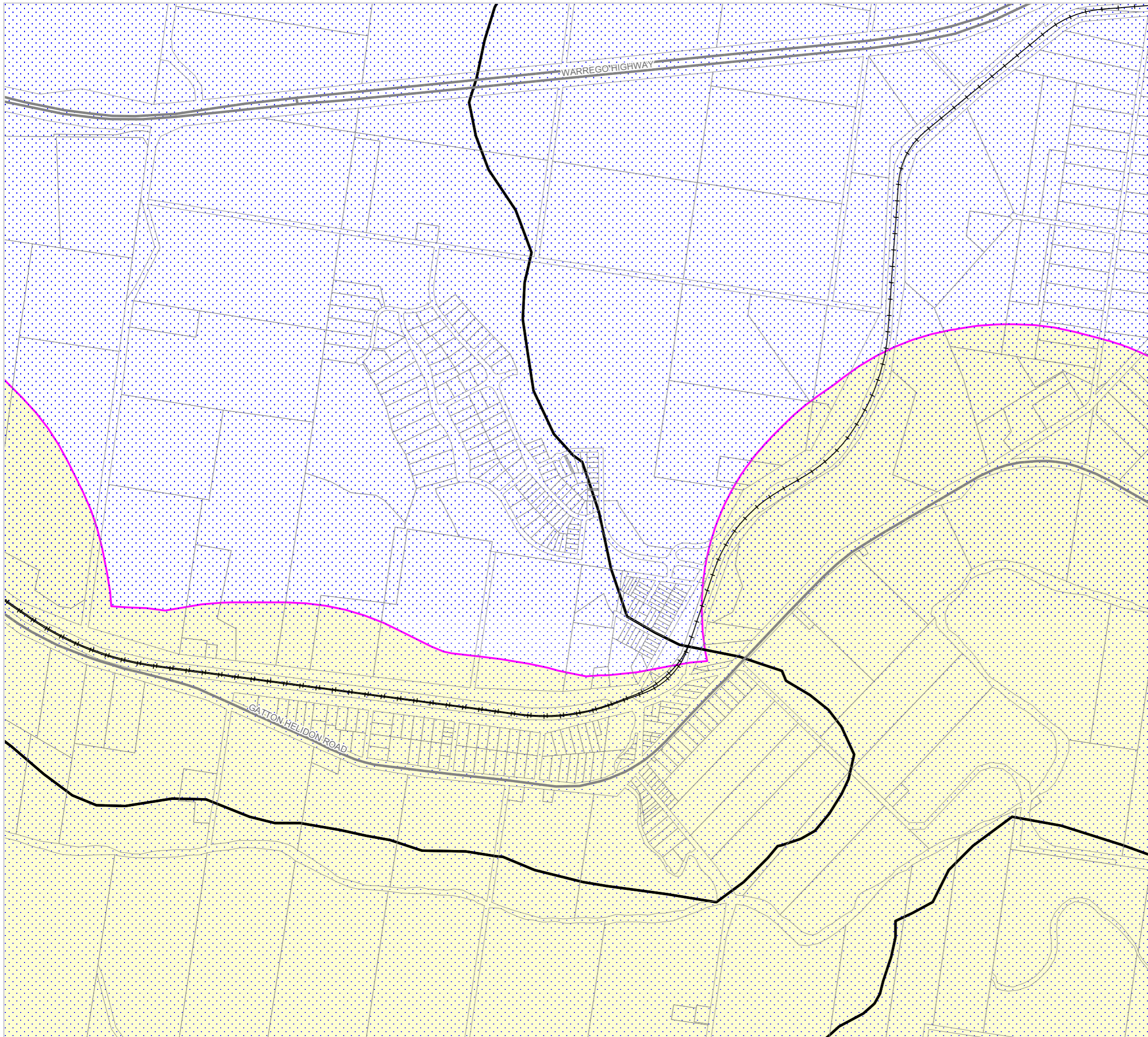
### OM12B Waterways and water resource catchment - water resource catchment overlay map

#### Water Resources

- Bulk water supply storage
- Bulk water supply storage buffer (200m)
- Bulk water supply storage buffer (400m)
- Bulk water supply storage buffer (800m)
- Water supply buffer area
- Lockyer Creek water resource catchment
- Lockyer Creek water sub-catchments

#### Other Features

- Major Road
- Railway Network
- Cadastral\_Lots
- Local Government Boundary



#### NOTE

Refer to online or electronic mapping where layers overlap or labels obstruct the data on the map.

#### MAP INFORMATION

Based on or contains data sourced from the State Government which gives no warranty in relation to the data (including accuracy, reliability, completeness or suitability) and accepts no liability (including without limitation, liability in negligence) for any loss, damage or costs (including consequential damage) relating to any use of the data.

© Copyright Lockyer Valley Regional Council 2023

#### DATA SOURCES

Cadastral data weekly - whole of State Queensland, Rail network - Queensland, Baseline roads and tracks - Queensland: © State of Queensland (Department of Resources) 2023. Water plan catchments - Queensland, Lockyer Creek water sub-catchments: © State of Queensland (Department of Environment and Science) 2020.

Gazettal Date: 00/00/0000

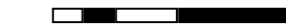
Geocentric Datum of Australia (GDA2020 / MGA zone 56)



Date: 19/6/2023

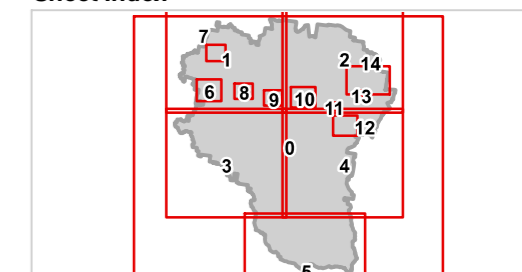
Approx Scale @ A3: 1:15,000

0 0.5



kilometres

#### Sheet Index





REGIONAL COUNCIL

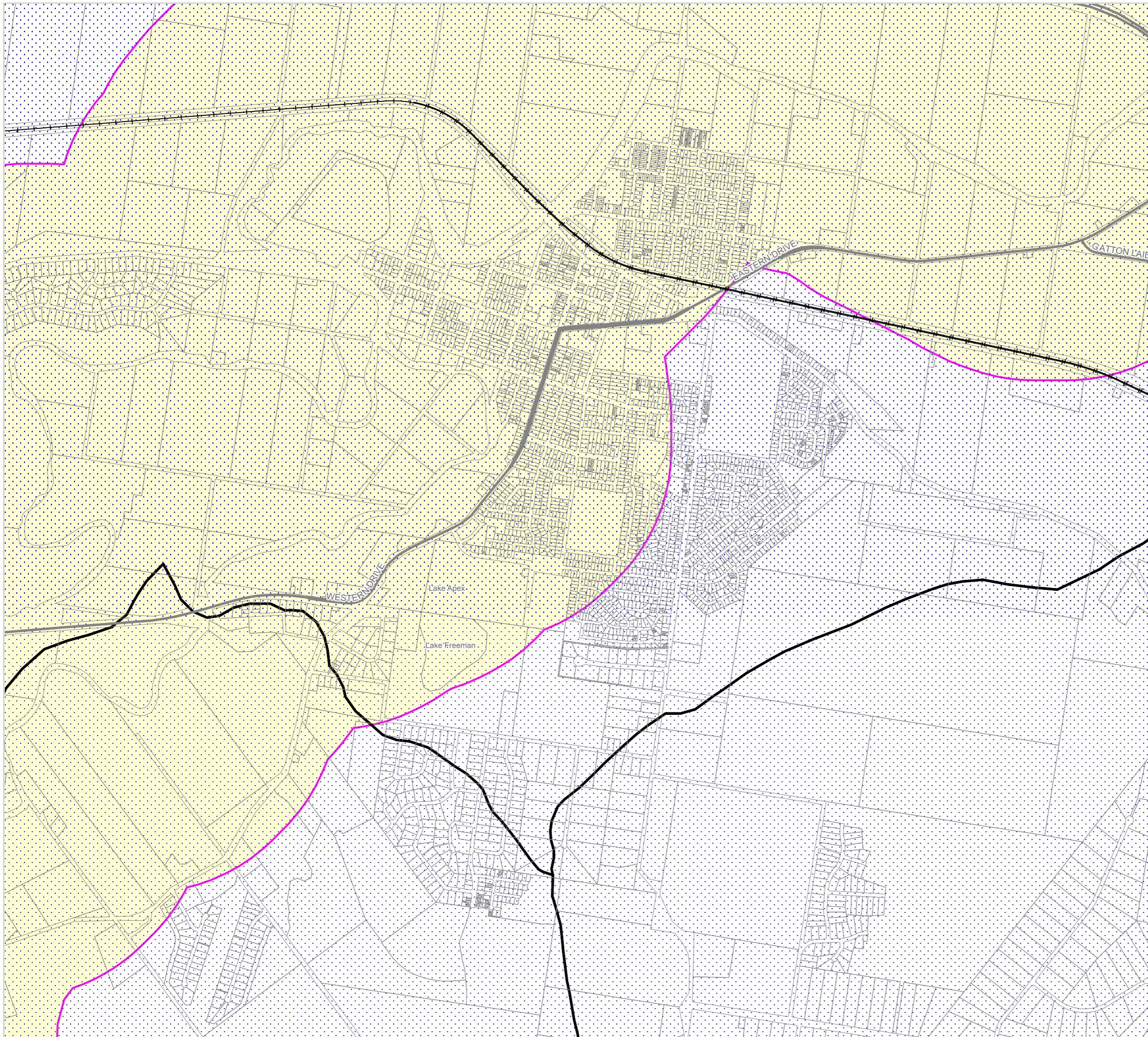
**OM12B Waterways and water resource  
catchment - water resource catchment  
overlay map**

**Water Resources**

- Bulk water supply storage
- Bulk water supply storage buffer (200m)
- Bulk water supply storage buffer (400m)
- Bulk water supply storage buffer (800m)
- Water supply buffer area
- Lockyer Creek water resource catchment
- Lockyer Creek water sub-catchments

**Other Features**

- Major Road
- Railway Network
- Cadastral\_Lots
- Local Government Boundary



**NOTE**

Refer to online or electronic mapping where layers overlap or labels obstruct the data on the map.

**MAP INFORMATION**

Based on or contains data sourced from the State Government which gives no warranty in relation to the data (including accuracy, reliability, completeness or suitability) and accepts no liability (including without limitation, liability in negligence) for any loss, damage or costs (including consequential damage) relating to any use of the data.  
© Copyright Lockyer Valley Regional Council 2023

**DATA SOURCES**

Cadastral data weekly - whole of State Queensland, Rail network - Queensland, Baseline roads and tracks - Queensland: © State of Queensland (Department of Resources) 2023.  
Water plan catchments - Queensland, Lockyer Creek water sub-catchments: © State of Queensland (Department of Environment and Science) 2020.

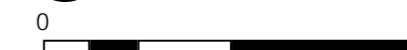
Gazettal Date: 00/00/0000

Geocentric Datum of Australia (GDA2020 / MGA zone 56)



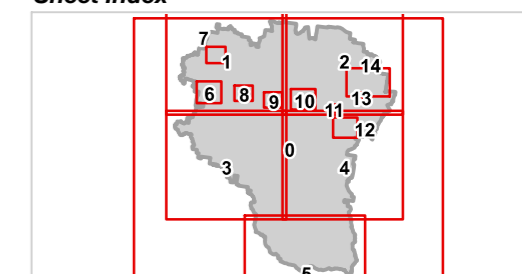
Date: 19/6/2023

Approx Scale @ A3: 1:20,000



kilometres

**Sheet Index**





REGIONAL COUNCIL

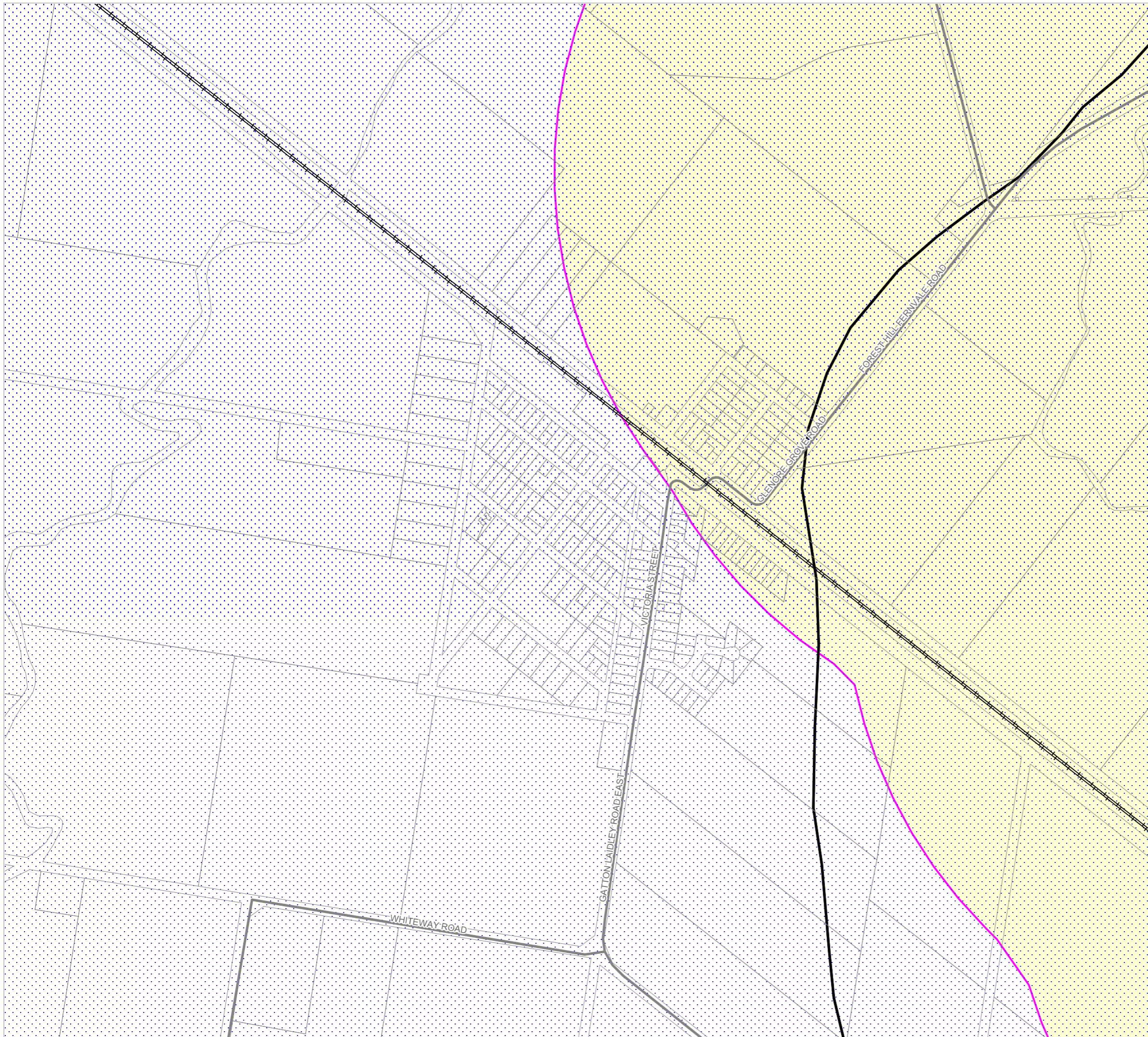
**OM12B Waterways and water resource  
catchment - water resource catchment  
overlay map**

**Water Resources**

- Bulk water supply storage
- Bulk water supply storage buffer (200m)
- Bulk water supply storage buffer (400m)
- Bulk water supply storage buffer (800m)
- Water supply buffer area
- Lockyer Creek water resource catchment
- Lockyer Creek water sub-catchments

**Other Features**

- Major Road
- Railway Network
- Cadastral\_Lots
- Local Government Boundary



**NOTE**

Refer to online or electronic mapping where layers overlap or labels obstruct the data on the map.

**MAP INFORMATION**

Based on or contains data sourced from the State Government which gives no warranty in relation to the data (including accuracy, reliability, completeness or suitability) and accepts no liability (including without limitation, liability in negligence) for any loss, damage or costs (including consequential damage) relating to any use of the data.  
© Copyright Lockyer Valley Regional Council 2023

**DATA SOURCES**

Cadastral data weekly - whole of State Queensland, Rail network - Queensland, Baseline roads and tracks - Queensland: © State of Queensland (Department of Resources) 2023.  
Water plan catchments - Queensland, Lockyer Creek water sub-catchments: © State of Queensland (Department of Environment and Science) 2020.

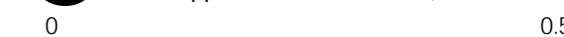
Gazettal Date: 00/00/0000

Geocentric Datum of Australia (GDA2020 / MGA zone 56)

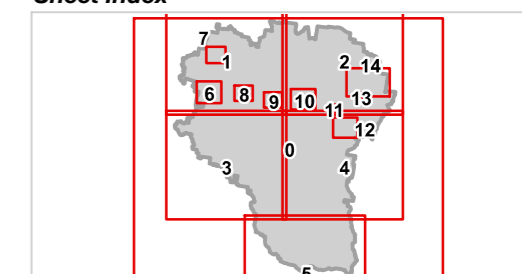


Date: 19/6/2023

Approx Scale @ A3: 1:7,500



**Sheet Index**













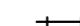


REGIONAL COUNCIL

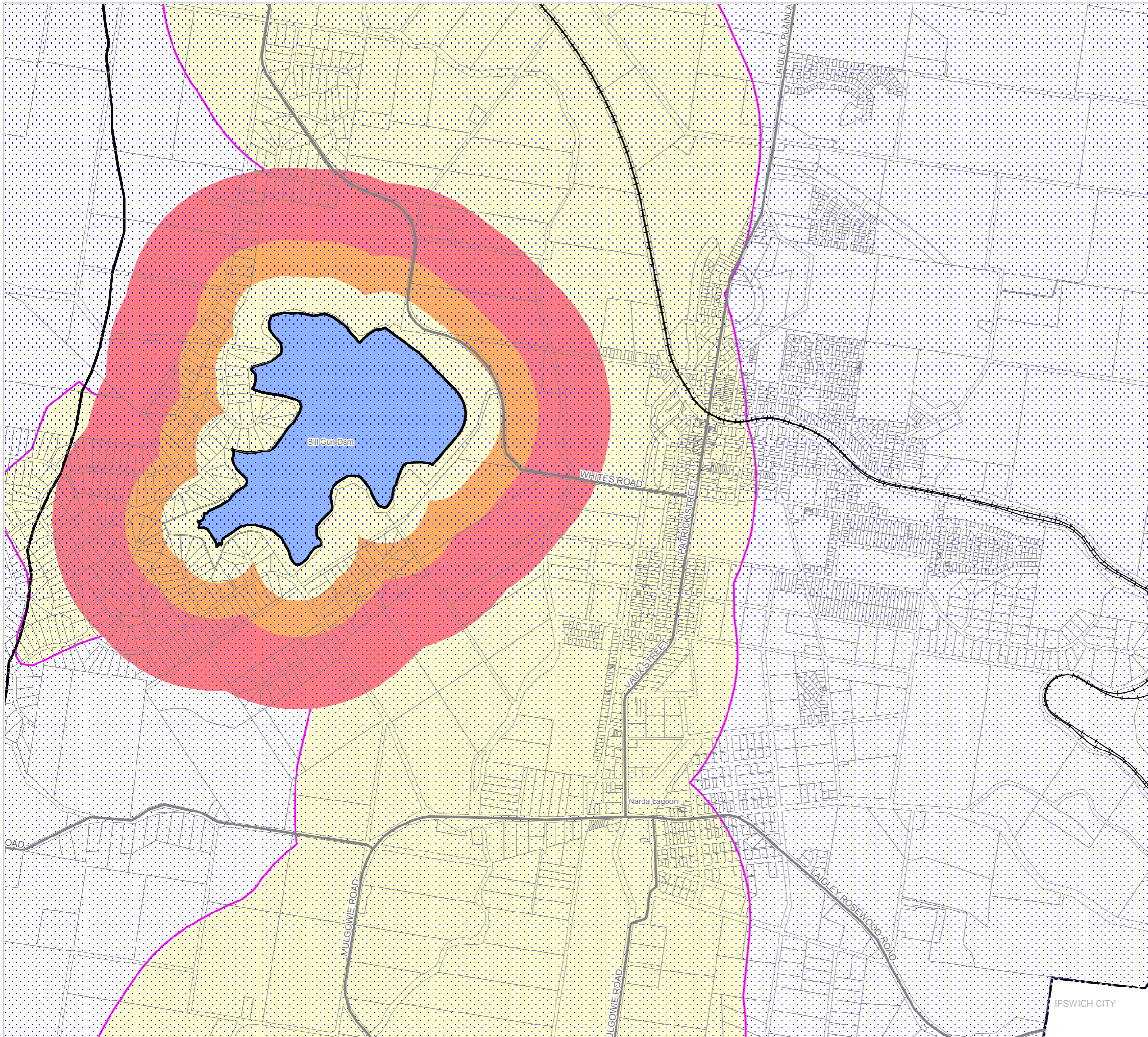
### OM12B Waterways and water resource catchment - water resource catchment overlay map

#### Water Resources

-  Bulk water supply storage
-  Bulk water supply storage buffer (200m)
-  Bulk water supply storage buffer (400m)
-  Bulk water supply storage buffer (800m)
-  Water supply buffer area
-  Lockyer Creek water resource catchment
-  Lockyer Creek water sub-catchments

#### Other Features

-  Major Road
-  Railway Network
-  Cadastral\_Lots
-  Local Government Boundary



#### NOTE

Refer to online or electronic mapping where layers overlap or labels obstruct the data on the map.

#### MAP INFORMATION

Based on or contains data sourced from the State Government which gives no warranty in relation to the data (including accuracy, reliability, completeness or suitability) and accepts no liability (including without limitation, liability in negligence) for any loss, damage or costs (including consequential damage) relating to any use of the data.  
© Copyright Lockyer Valley Regional Council 2023

#### DATA SOURCES

Cadastral data weekly - whole of State Queensland, Rail network - Queensland, Baseline roads and tracks - Queensland: © State of Queensland (Department of Resources) 2023.  
Water plan catchments - Queensland, Lockyer Creek water sub-catchments: © State of Queensland (Department of Environment and Science) 2020.

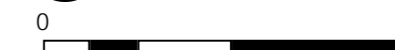
Gazettal Date: 00/00/0000

Geocentric Datum of Australia (GDA2020 / MGA zone 56)



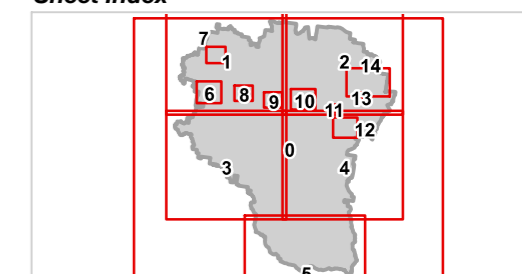
Date: 19/6/2023

Approx Scale @ A3: 1:20,000



kilometres

#### Sheet Index





REGIONAL COUNCIL

**OM12B Waterways and water resource  
catchment - water resource catchment  
overlay map**

**Water Resources**

- Bulk water supply storage
- Bulk water supply storage buffer (200m)
- Bulk water supply storage buffer (400m)
- Bulk water supply storage buffer (800m)
- Water supply buffer area
- Lockyer Creek water resource catchment
- Lockyer Creek water sub-catchments

**Other Features**

- Major Road
- Railway Network
- Cadastral\_Lots
- Local Government Boundary



**NOTE**

Refer to online or electronic mapping where layers overlap or labels obstruct the data on the map.

**MAP INFORMATION**

Based on or contains data sourced from the State Government which gives no warranty in relation to the data (including accuracy, reliability, completeness or suitability) and accepts no liability (including without limitation, liability in negligence) for any loss, damage or costs (including consequential damage) relating to any use of the data.  
© Copyright Lockyer Valley Regional Council 2023

**DATA SOURCES**

Cadastral data weekly - whole of State Queensland, Rail network - Queensland, Baseline roads and tracks - Queensland: © State of Queensland (Department of Resources) 2023.  
Water plan catchments - Queensland, Lockyer Creek water sub-catchments: © State of Queensland (Department of Environment and Science) 2020.

Gazettal Date: 00/00/0000

Geocentric Datum of Australia (GDA2020 / MGA zone 56)

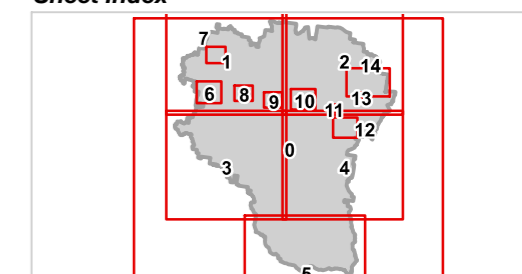


Date: 19/6/2023

Approx Scale @ A3: 1:10,000



**Sheet Index**





REGIONAL COUNCIL

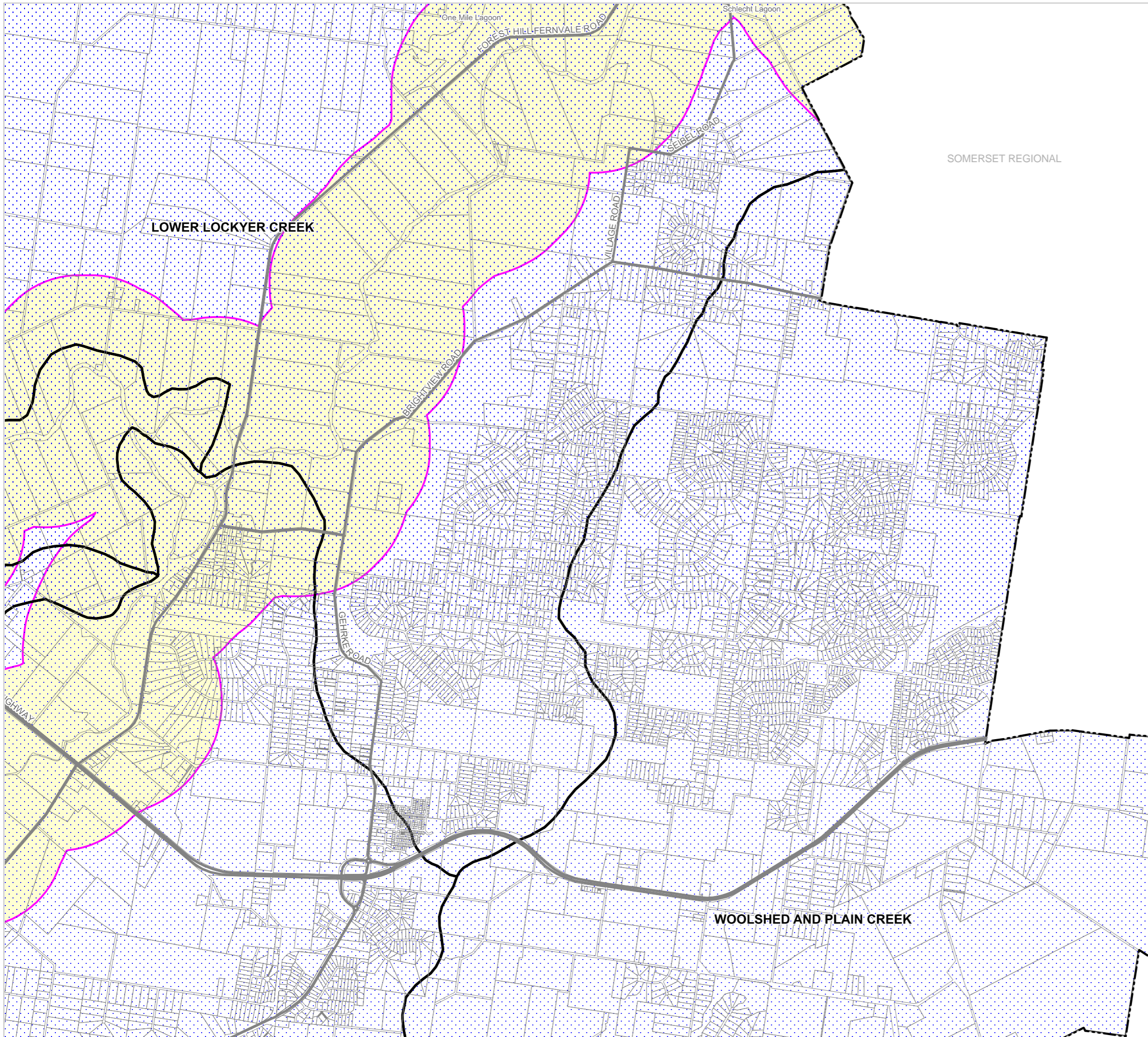
OM12B Waterways and water resource catchment - water resource catchment overlay map

Water Resources

- Bulk water supply storage
- Bulk water supply storage buffer (200m)
- Bulk water supply storage buffer (400m)
- Bulk water supply storage buffer (800m)
- Water supply buffer area
- Lockyer Creek water resource catchment
- Lockyer Creek water sub-catchments

Other Features

- Major Road
- Railway Network
- Cadastral Lots
- Local Government Boundary



SOMERSET REGIONAL

NOTE

Refer to online or electronic mapping where layers overlap or labels obstruct the data on the map.

MAP INFORMATION

Based on or contains data sourced from the State Government which gives no warranty in relation to the data (including accuracy, reliability, completeness or suitability) and accepts no liability (including without limitation, liability in negligence) for any loss, damage or costs (including consequential damage) relating to any use of the data.  
© Copyright Lockyer Valley Regional Council 2023

DATA SOURCES

Cadastral data weekly - whole of State Queensland, Rail network - Queensland, Baseline roads and tracks - Queensland: © State of Queensland (Department of Resources) 2023. Water plan catchments - Queensland, Lockyer Creek water sub-catchments: © State of Queensland (Department of Environment and Science) 2020.

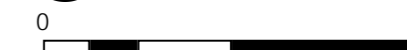
Gazettal Date: 00/00/0000

Geocentric Datum of Australia (GDA2020 / MGA zone 56)



Date: 19/6/2023

Approx Scale @ A3: 1:40,000



kilometres

Sheet Index

