



REGIONAL COUNCIL

OM16 Transport noise corridor - information overlay map

Transport corridors

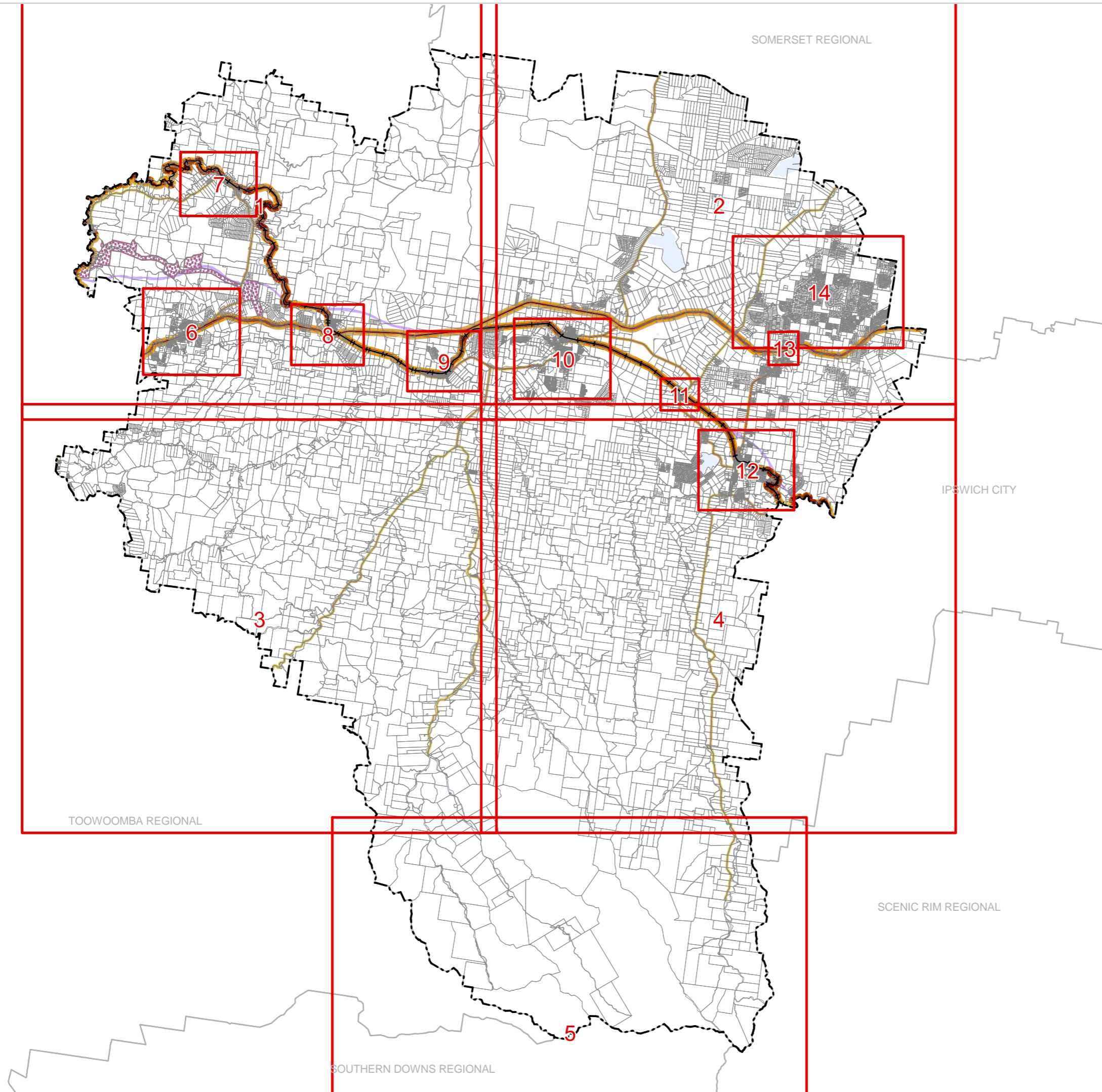
- Future railway corridor
- Future state-controlled road corridor

Transport noise categories

- Category 0: Noise Level < 58 dB(A)
- Category 1: 58 dB(A) =< Noise Level < 63 dB(A)
- Category 2: 63 dB(A) =< Noise Level < 68 dB(A)
- Category 3: 68 dB(A) =< Noise Level < 73 dB(A)
- Category 4: Noise Level >= 73 dB(A)

Other Features

- Railway Network
- Cadastral boundary
- Local Government Boundary
- Watercourse / Waterbody



NOTE

Refer to online or electronic mapping where layers overlap or labels obstruct the data on the map.

MAP INFORMATION

Based on or contains data sourced from the State Government which gives no warranty in relation to the data (including accuracy, reliability, completeness or suitability) and accepts no liability (including without limitation, liability in negligence) for any loss, damage or costs (including consequential damage) relating to any use of the data.

DATA SOURCES

Cadastral data weekly - whole of State Queensland, Rail network - Queensland, Baseline roads and tracks - Queensland: © State of Queensland (Department of Resources) 2023. Data sourced 7/12/2020; Noise corridor - State-controlled road (MANDATORY area), Noise corridor - State-controlled road (VOLUNTARY area), Noise corridor - rail network: © State of Queensland (Department of Transport and Main Roads) 2020

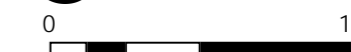
Gazettal Date: 00/00/0000

Geocentric Datum of Australia (GDA2020 / MGA zone 56)

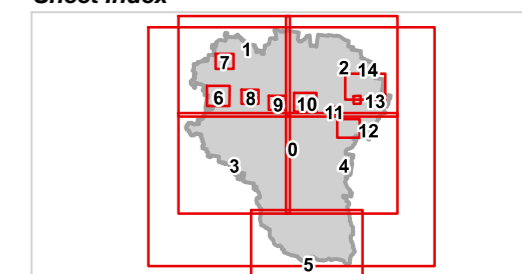


Date: 19/6/2023

Approx Scale @ A3: 1:250,000



Sheet Index





REGIONAL COUNCIL

OM16 Transport noise corridor - information overlay map

Transport corridors

- Future railway corridor
- Future state-controlled road corridor

Transport noise categories

- Category 0: Noise Level < 58 dB(A)
- Category 1: 58 dB(A) =< Noise Level < 63 dB(A)
- Category 2: 63 dB(A) =< Noise Level < 68 dB(A)
- Category 3: 68 dB(A) =< Noise Level < 73 dB(A)
- Category 4: Noise Level >= 73 dB(A)

Other Features

- Railway Network
- Cadastral boundary
- Local Government Boundary
- Watercourse / Waterbody



NOTE

Refer to online or electronic mapping where layers overlap or labels obstruct the data on the map.

MAP INFORMATION

Based on or contains data sourced from the State Government which gives no warranty in relation to the data (including accuracy, reliability, completeness or suitability) and accepts no liability (including without limitation, liability in negligence) for any loss, damage or costs (including consequential damage) relating to any use of the data.

© Copyright Lockyer Valley Regional Council 2023

DATA SOURCES

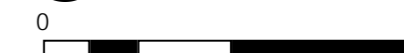
Cadastral data weekly - whole of State Queensland, Rail network - Queensland, Baseline roads and tracks - Queensland: © State of Queensland (Department of Resources) 2023. Data sourced 7/12/2020; Noise corridor - State-controlled road (MANDATORY area), Noise corridor - State-controlled road (VOLUNTARY area), Noise corridor - rail network: © State of Queensland (Department of Transport and Main Roads) 2020

Gazettal Date: 00/00/0000

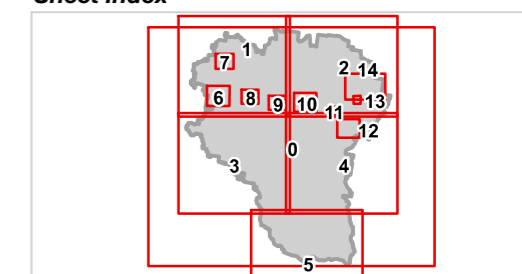
Geocentric Datum of Australia (GDA2020 / MGA zone 56)

Date: 19/6/2023

Approx Scale @ A3: 1:100,000



Sheet Index





REGIONAL COUNCIL

### OM16 Transport noise corridor - information overlay map

#### Transport corridors

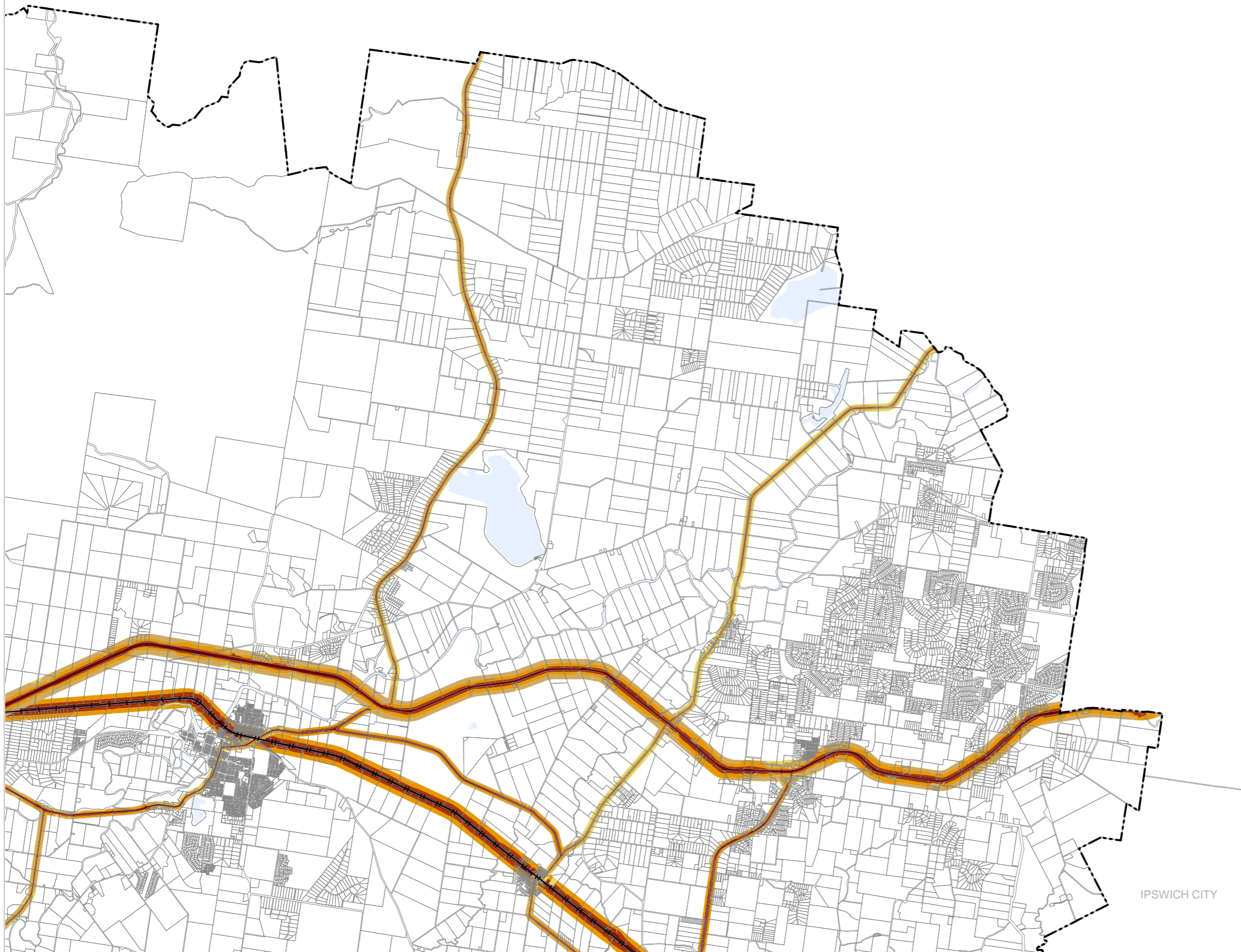
- Future railway corridor
- Future state-controlled road corridor

#### Transport noise categories

- Category 0: Noise Level < 58 dB(A)
- Category 1: 58 dB(A) =< Noise Level < 63 dB(A)
- Category 2: 63 dB(A) =< Noise Level < 68 dB(A)
- Category 3: 68 dB(A) =< Noise Level < 73 dB(A)
- Category 4: Noise Level >= 73 dB(A)

#### Other Features

- Railway Network
- Cadastral boundary
- Local Government Boundary
- Watercourse / Waterbody



#### NOTE

Refer to online or electronic mapping where layers overlap or labels obstruct the data on the map.

#### MAP INFORMATION

Based on or contains data sourced from the State Government which gives no warranty in relation to the data (including accuracy, reliability, completeness or suitability) and accepts no liability (including without limitation, liability in negligence) for any loss, damage or costs (including consequential damage) relating to any use of the data.  
© Copyright Lockyer Valley Regional Council 2023

#### DATA SOURCES

Cadastral data weekly - whole of State Queensland, Rail network - Queensland, Baseline roads and tracks - Queensland: © State of Queensland (Department of Resources) 2023. Data sourced 7/12/2020; Noise corridor - State-controlled road (MANDATORY area), Noise corridor - State-controlled road (VOLUNTARY area), Noise corridor - rail network: © State of Queensland (Department of Transport and Main Roads) 2020

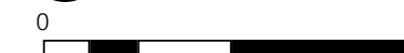
Gazettal Date: 00/00/0000

Geocentric Datum of Australia (GDA2020 / MGA zone 56)

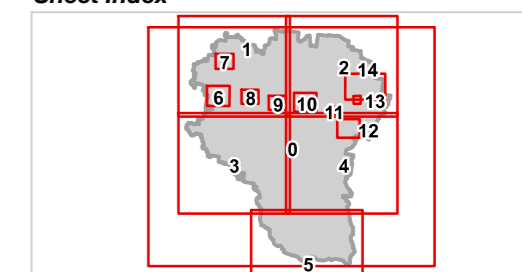


Date: 19/6/2023

Approx Scale @ A3: 1:100,000



#### Sheet Index





REGIONAL COUNCIL

### OM16 Transport noise corridor - information overlay map

#### Transport corridors

- Future railway corridor
- Future state-controlled road corridor

#### Transport noise categories

- Category 0: Noise Level < 58 dB(A)
- Category 1: 58 dB(A) =< Noise Level < 63 dB(A)
- Category 2: 63 dB(A) =< Noise Level < 68 dB(A)
- Category 3: 68 dB(A) =< Noise Level < 73 dB(A)
- Category 4: Noise Level >= 73 dB(A)

#### Other Features

- Railway Network
- Cadastral boundary
- Local Government Boundary
- Watercourse / Waterbody

#### NOTE

Refer to online or electronic mapping where layers overlap or labels obstruct the data on the map.

#### MAP INFORMATION

Based on or contains data sourced from the State Government which gives no warranty in relation to the data (including accuracy, reliability, completeness or suitability) and accepts no liability (including without limitation, liability in negligence) for any loss, damage or costs (including consequential damage) relating to any use of the data.  
© Copyright Lockyer Valley Regional Council 2023

#### DATA SOURCES

Cadastral data weekly - whole of State Queensland, Rail network - Queensland, Baseline roads and tracks - Queensland: © State of Queensland (Department of Resources) 2023. Data sourced 7/12/2020; Noise corridor - State-controlled road (MANDATORY area), Noise corridor - State-controlled road (VOLUNTARY area), Noise corridor - rail network: © State of Queensland (Department of Transport and Main Roads) 2020

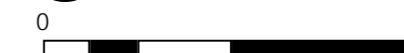
Gazettal Date: 00/00/0000

Geocentric Datum of Australia (GDA2020 / MGA zone 56)

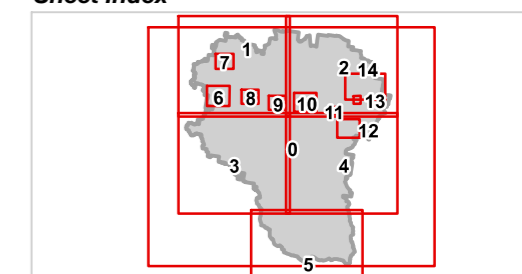


Date: 19/6/2023

Approx Scale @ A3: 1:100,000



#### Sheet Index



TOOWOOMBA REGIONAL





REGIONAL COUNCIL

### OM16 Transport noise corridor - information overlay map

#### Transport corridors

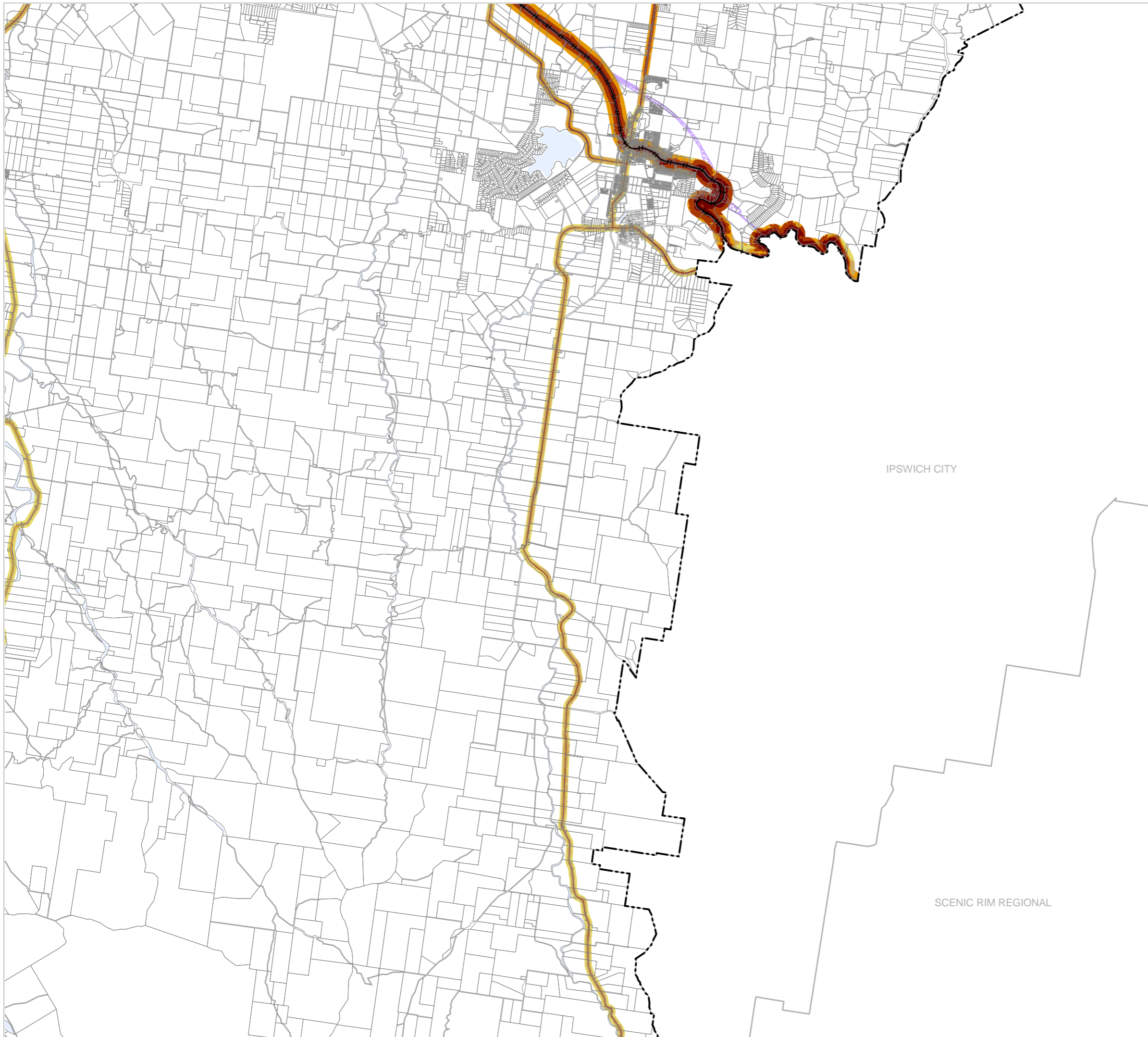
- Future railway corridor
- Future state-controlled road corridor

#### Transport noise categories

- Category 0: Noise Level < 58 dB(A)
- Category 1: 58 dB(A) =< Noise Level < 63 dB(A)
- Category 2: 63 dB(A) =< Noise Level < 68 dB(A)
- Category 3: 68 dB(A) =< Noise Level < 73 dB(A)
- Category 4: Noise Level >= 73 dB(A)

#### Other Features

- Railway Network
- Cadastral boundary
- Local Government Boundary
- Watercourse / Waterbody



IPSWICH CITY

SCENIC RIM REGIONAL

#### NOTE

Refer to online or electronic mapping where layers overlap or labels obstruct the data on the map.

#### MAP INFORMATION

Based on or contains data sourced from the State Government which gives no warranty in relation to the data (including accuracy, reliability, completeness or suitability) and accepts no liability (including without limitation, liability in negligence) for any loss, damage or costs (including consequential damage) relating to any use of the data.  
© Copyright Lockyer Valley Regional Council 2023

#### DATA SOURCES

Cadastral data weekly - whole of State Queensland, Rail network - Queensland, Baseline roads and tracks - Queensland: © State of Queensland (Department of Resources) 2023. Data sourced 7/12/2020; Noise corridor - State-controlled road (MANDATORY area), Noise corridor - State-controlled road (VOLUNTARY area), Noise corridor - rail network: © State of Queensland (Department of Transport and Main Roads) 2020

Gazettal Date: 00/00/0000

Geocentric Datum of Australia (GDA2020 / MGA zone 56)

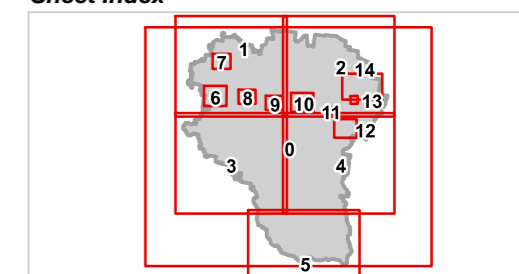


Date: 19/6/2023

Approx Scale @ A3: 1:100,000



#### Sheet Index





REGIONAL COUNCIL

OM16 Transport noise corridor - information overlay map

Transport corridors

- Future railway corridor
- Future state-controlled road corridor

Transport noise categories

- Category 0: Noise Level < 58 dB(A)
- Category 1: 58 dB(A) =< Noise Level < 63 dB(A)
- Category 2: 63 dB(A) =< Noise Level < 68 dB(A)
- Category 3: 68 dB(A) =< Noise Level < 73 dB(A)
- Category 4: Noise Level >= 73 dB(A)

Other Features

- Railway Network
- Cadastral boundary
- Local Government Boundary
- Watercourse / Waterbody



NOTE

Refer to online or electronic mapping where layers overlap or labels obstruct the data on the map.

MAP INFORMATION

Based on or contains data sourced from the State Government which gives no warranty in relation to the data (including accuracy, reliability, completeness or suitability) and accepts no liability (including without limitation, liability in negligence) for any loss, damage or costs (including consequential damage) relating to any use of the data.

© Copyright Lockyer Valley Regional Council 2023

DATA SOURCES

Cadastral data weekly - whole of State Queensland, Rail network - Queensland, Baseline roads and tracks - Queensland: © State of Queensland (Department of Resources) 2023. Data sourced 7/12/2020; Noise corridor - State-controlled road (MANDATORY area), Noise corridor - State-controlled road (VOLUNTARY area), Noise corridor - rail network: © State of Queensland (Department of Transport and Main Roads) 2020

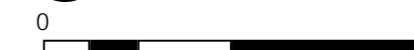
Gazettal Date: 00/00/0000

Geocentric Datum of Australia (GDA2020 / MGA zone 56)

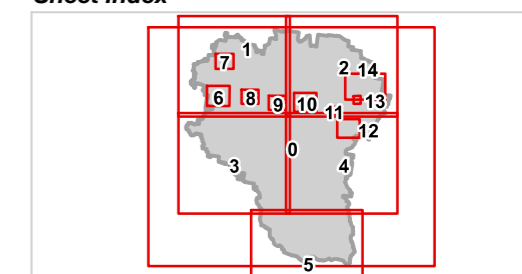


Date:19/6/2023

Approx Scale @ A3: 1:100,000



Sheet Index





REGIONAL COUNCIL

### OM16 Transport noise corridor - information overlay map

#### Transport corridors

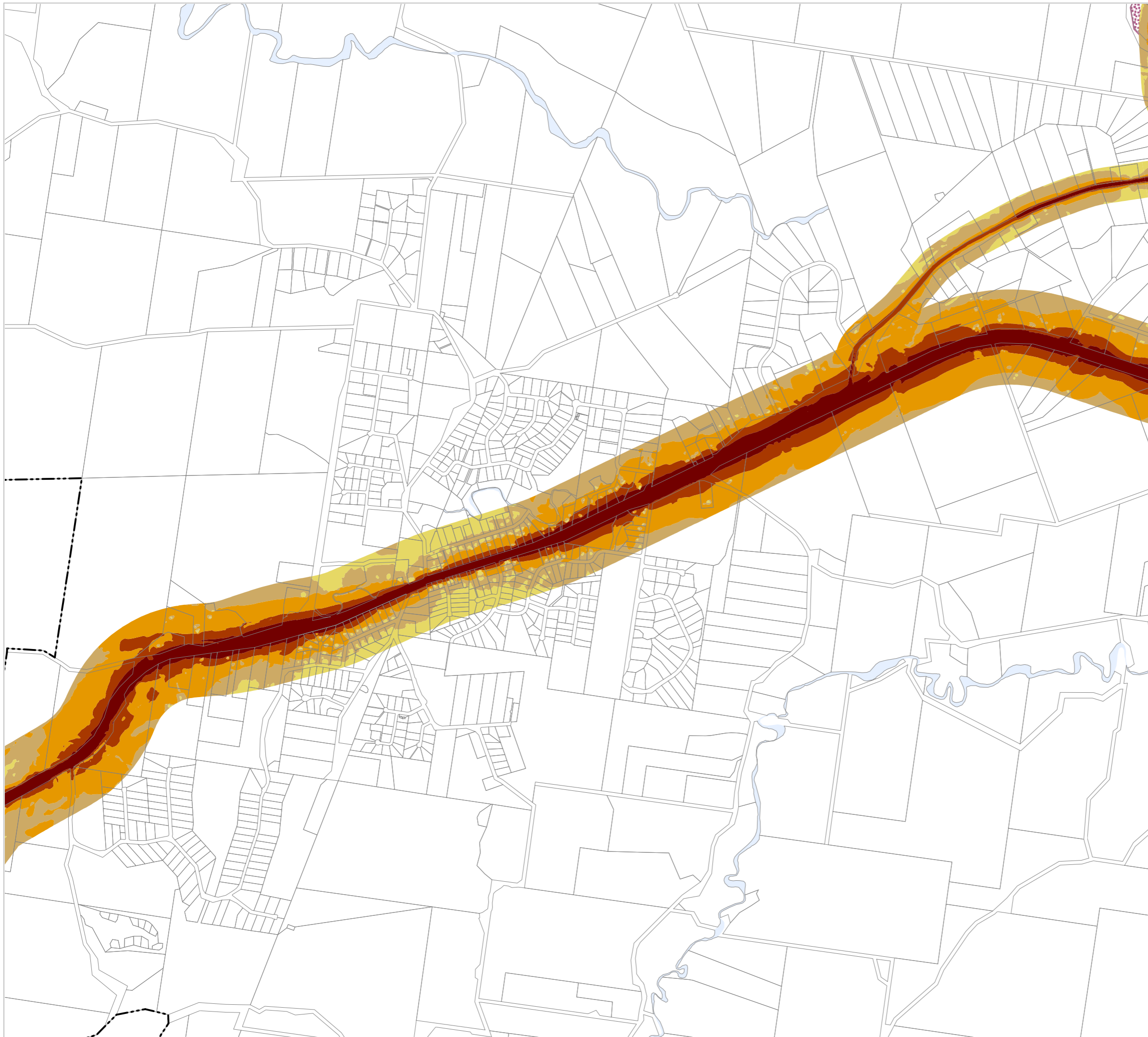
- Future railway corridor
- Future state-controlled road corridor

#### Transport noise categories

- Category 0: Noise Level < 58 dB(A)
- Category 1: 58 dB(A) =< Noise Level < 63 dB(A)
- Category 2: 63 dB(A) =< Noise Level < 68 dB(A)
- Category 3: 68 dB(A) =< Noise Level < 73 dB(A)
- Category 4: Noise Level >= 73 dB(A)

#### Other Features

- Railway Network
- Cadastral boundary
- Local Government Boundary
- Watercourse / Waterbody



#### NOTE

Refer to online or electronic mapping where layers overlap or labels obstruct the data on the map.

#### MAP INFORMATION

Based on or contains data sourced from the State Government which gives no warranty in relation to the data (including accuracy, reliability, completeness or suitability) and accepts no liability (including without limitation, liability in negligence) for any loss, damage or costs (including consequential damage) relating to any use of the data.  
© Copyright Lockyer Valley Regional Council 2023

#### DATA SOURCES

Cadastral data weekly - whole of State Queensland, Rail network - Queensland, Baseline roads and tracks - Queensland: © State of Queensland (Department of Resources) 2023. Data sourced 7/12/2020; Noise corridor - State-controlled road (MANDATORY area), Noise corridor - State-controlled road (VOLUNTARY area), Noise corridor - rail network: © State of Queensland (Department of Transport and Main Roads) 2020

Gazettal Date: 00/00/0000

Geocentric Datum of Australia (GDA2020 / MGA zone 56)

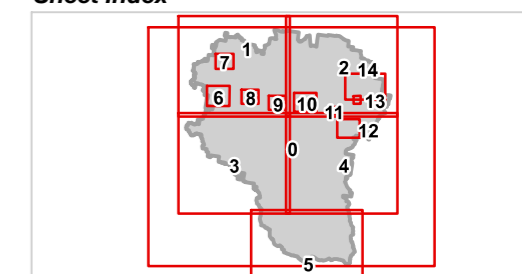


Date: 19/6/2023

Approx Scale @ A3: 1:20,000



#### Sheet Index





REGIONAL COUNCIL

### OM16 Transport noise corridor - information overlay map

#### Transport corridors

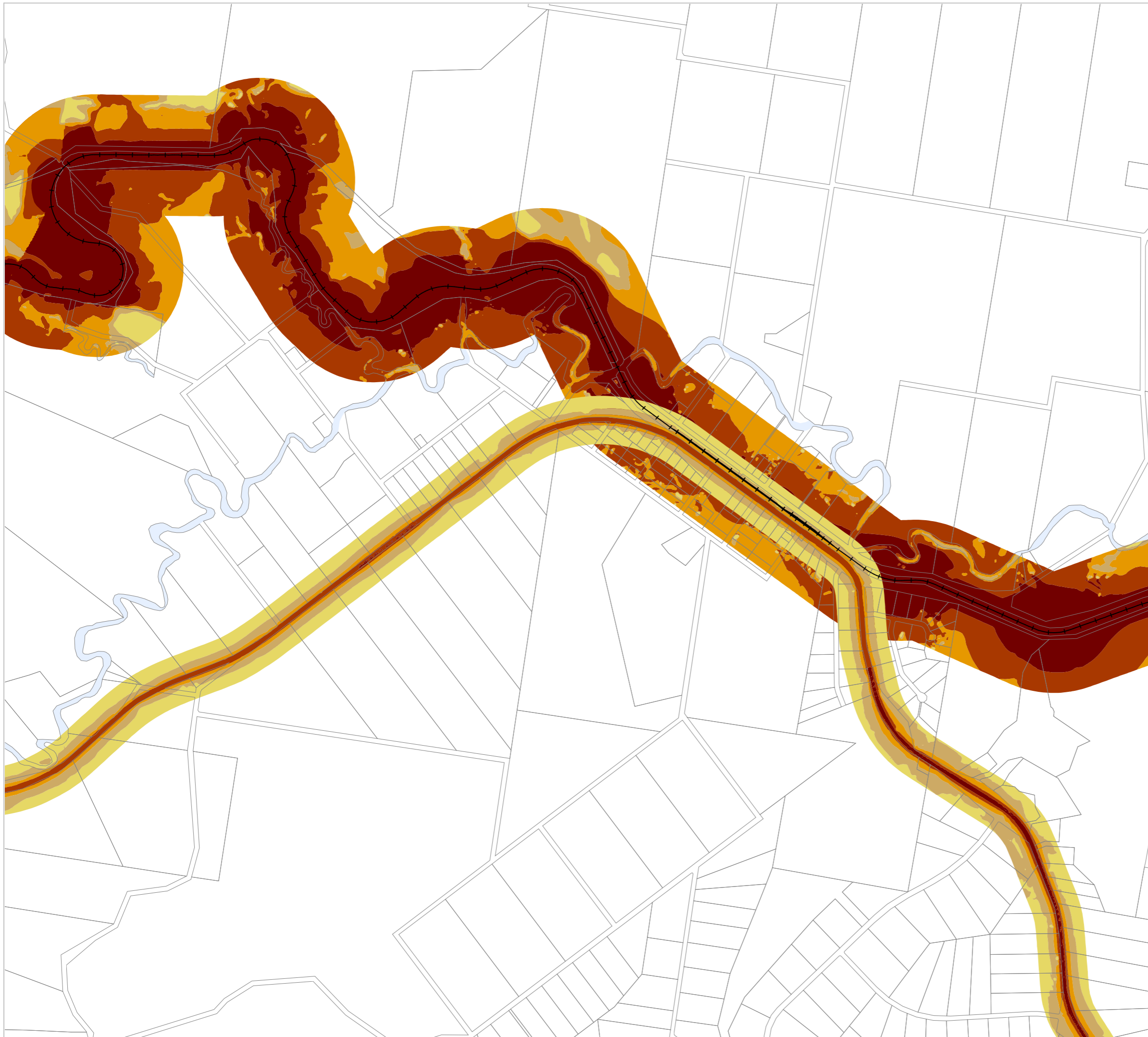
- Future railway corridor
- Future state-controlled road corridor

#### Transport noise categories

- Category 0: Noise Level < 58 dB(A)
- Category 1: 58 dB(A) =< Noise Level < 63 dB(A)
- Category 2: 63 dB(A) =< Noise Level < 68 dB(A)
- Category 3: 68 dB(A) =< Noise Level < 73 dB(A)
- Category 4: Noise Level >= 73 dB(A)

#### Other Features

- Railway Network
- Cadastral boundary
- Local Government Boundary
- Watercourse / Waterbody



#### NOTE

Refer to online or electronic mapping where layers overlap or labels obstruct the data on the map.

#### MAP INFORMATION

Based on or contains data sourced from the State Government which gives no warranty in relation to the data (including accuracy, reliability, completeness or suitability) and accepts no liability (including without limitation, liability in negligence) for any loss, damage or costs (including consequential damage) relating to any use of the data.

© Copyright Lockyer Valley Regional Council 2023

#### DATA SOURCES

Cadastral data weekly - whole of State Queensland, Rail network - Queensland, Baseline roads and tracks - Queensland: © State of Queensland (Department of Resources) 2023. Data sourced 7/12/2020; Noise corridor - State-controlled road (MANDATORY area), Noise corridor - State-controlled road (VOLUNTARY area), Noise corridor - rail network: © State of Queensland (Department of Transport and Main Roads) 2020

Gazettal Date: 00/00/0000

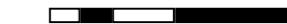
Geocentric Datum of Australia (GDA2020 / MGA zone 56)



Date: 19/6/2023

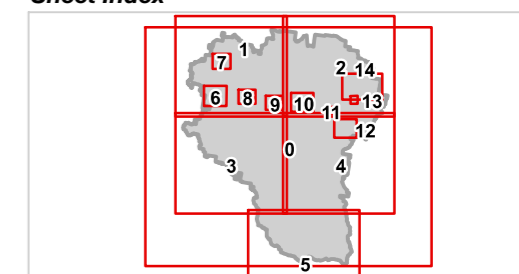
Approx Scale @ A3: 1:15,000

0 0.5



kilometres

#### Sheet Index







REGIONAL COUNCIL

### OM16 Transport noise corridor - information overlay map

#### Transport corridors

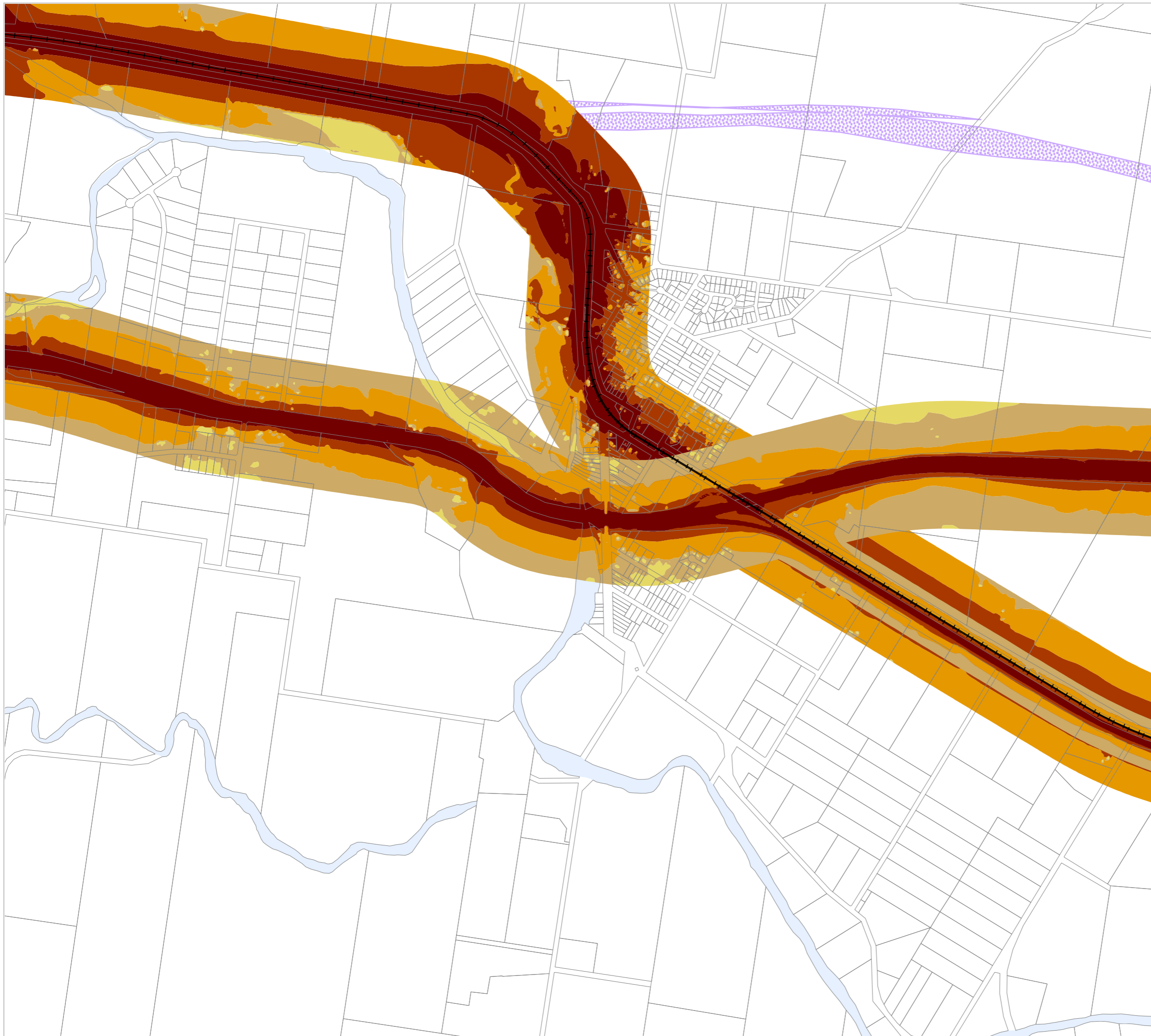
- Future railway corridor
- Future state-controlled road corridor

#### Transport noise categories

- Category 0: Noise Level < 58 dB(A)
- Category 1: 58 dB(A) =< Noise Level < 63 dB(A)
- Category 2: 63 dB(A) =< Noise Level < 68 dB(A)
- Category 3: 68 dB(A) =< Noise Level < 73 dB(A)
- Category 4: Noise Level >= 73 dB(A)

#### Other Features

- Railway Network
- Cadastral boundary
- Local Government Boundary
- Watercourse / Waterbody



#### NOTE

Refer to online or electronic mapping where layers overlap or labels obstruct the data on the map.

#### MAP INFORMATION

Based on or contains data sourced from the State Government which gives no warranty in relation to the data (including accuracy, reliability, completeness or suitability) and accepts no liability (including without limitation, liability in negligence) for any loss, damage or costs (including consequential damage) relating to any use of the data.  
© Copyright Lockyer Valley Regional Council 2023

#### DATA SOURCES

Cadastral data weekly - whole of State Queensland, Rail network - Queensland, Baseline roads and tracks - Queensland: © State of Queensland (Department of Resources) 2023. Data sourced 7/12/2020; Noise corridor - State-controlled road (MANDATORY area), Noise corridor - State-controlled road (VOLUNTARY area), Noise corridor - rail network: © State of Queensland (Department of Transport and Main Roads) 2020

Gazettal Date: 00/00/0000

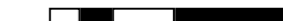
Geocentric Datum of Australia (GDA2020 / MGA zone 56)



Date: 19/6/2023

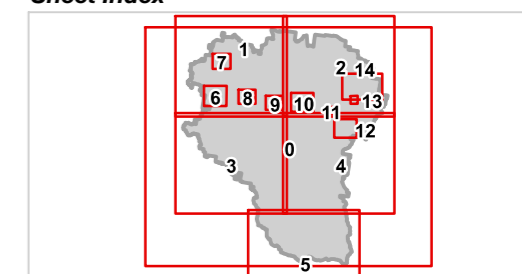
Approx Scale @ A3: 1:15,000

0 0.5



kilometres

#### Sheet Index












REGIONAL COUNCIL

**OM16 Transport noise corridor -  
information overlay map**

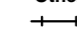



**Transport corridors**

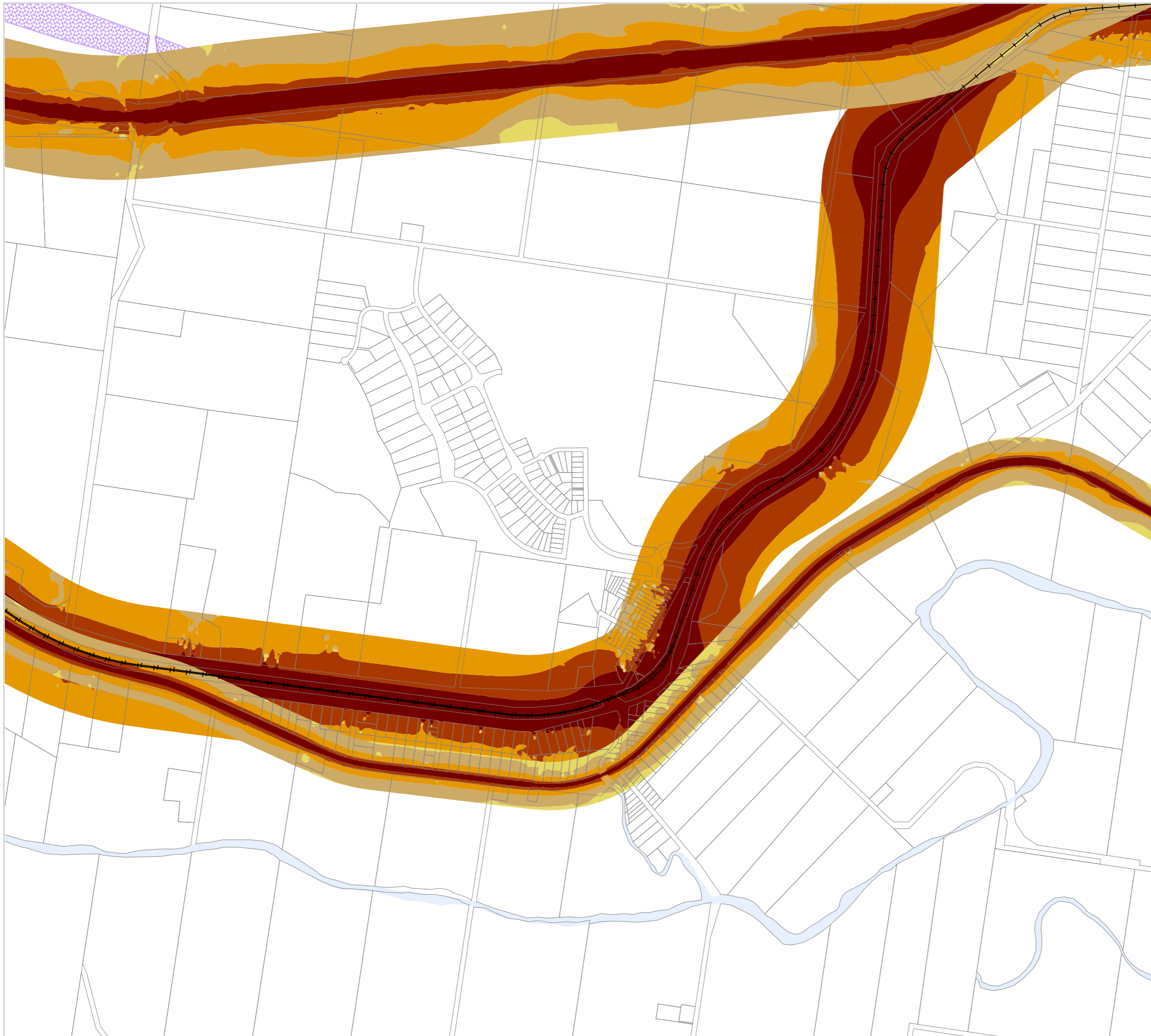
-  Future railway corridor
-  Future state-controlled road corridor

**Transport noise categories**

-  Category 0: Noise Level < 58 dB(A)
-  Category 1: 58 dB(A) =< Noise Level < 63 dB(A)
-  Category 2: 63 dB(A) =< Noise Level < 68 dB(A)
-  Category 3: 68 dB(A) =< Noise Level < 73 dB(A)
-  Category 4: Noise Level >= 73 dB(A)

**Other Features**

-  Railway Network
-  Cadastral boundary
-  Local Government Boundary
-  Watercourse / Waterbody



**NOTE**

Refer to online or electronic mapping where layers overlap or labels obstruct the data on the map.

**MAP INFORMATION**

Based on or contains data sourced from the State Government which gives no warranty in relation to the data (including accuracy, reliability, completeness or suitability) and accepts no liability (including without limitation, liability in negligence) for any loss, damage or costs (including consequential damage) relating to any use of the data.

© Copyright Lockyer Valley Regional Council 2023

**DATA SOURCES**

Cadastral data weekly - whole of State Queensland, Rail network - Queensland, Baseline roads and tracks - Queensland: © State of Queensland (Department of Resources) 2023. Data sourced 7/12/2020; Noise corridor - State-controlled road (MANDATORY area), Noise corridor - State-controlled road (VOLUNTARY area), Noise corridor - rail network: © State of Queensland (Department of Transport and Main Roads) 2020

Gazettal Date: 00/00/0000

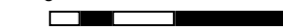
Geocentric Datum of Australia (GDA2020 / MGA zone 56)

Date: 19/6/2023

Approx Scale @ A3: 1:15,000

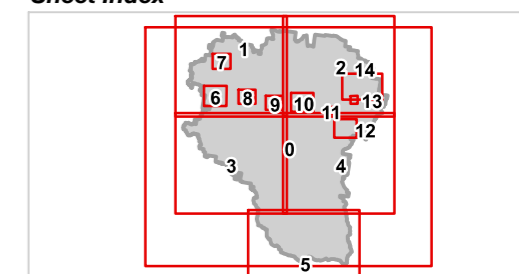


0 0.5



kilometres

**Sheet Index**












REGIONAL COUNCIL

**OM16 Transport noise corridor -  
information overlay map**

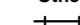



**Transport corridors**

-  Future railway corridor
-  Future state-controlled road corridor

**Transport noise categories**

-  Category 0: Noise Level < 58 dB(A)
-  Category 1: 58 dB(A) =< Noise Level < 63 dB(A)
-  Category 2: 63 dB(A) =< Noise Level < 68 dB(A)
-  Category 3: 68 dB(A) =< Noise Level < 73 dB(A)
-  Category 4: Noise Level >= 73 dB(A)

**Other Features**

-  Railway Network
-  Cadastral boundary
-  Local Government Boundary
-  Watercourse / Waterbody



**NOTE**

Refer to online or electronic mapping where layers overlap or labels obstruct the data on the map.

**MAP INFORMATION**

Based on or contains data sourced from the State Government which gives no warranty in relation to the data (including accuracy, reliability, completeness or suitability) and accepts no liability (including without limitation, liability in negligence) for any loss, damage or costs (including consequential damage) relating to any use of the data.  
© Copyright Lockyer Valley Regional Council 2023

**DATA SOURCES**

Cadastral data weekly - whole of State Queensland, Rail network - Queensland, Baseline roads and tracks - Queensland: © State of Queensland (Department of Resources) 2023. Data sourced 7/12/2020; Noise corridor - State-controlled road (MANDATORY area), Noise corridor - State-controlled road (VOLUNTARY area), Noise corridor - rail network: © State of Queensland (Department of Transport and Main Roads) 2020

Gazettal Date: 00/00/0000

Geocentric Datum of Australia (GDA2020 / MGA zone 56)

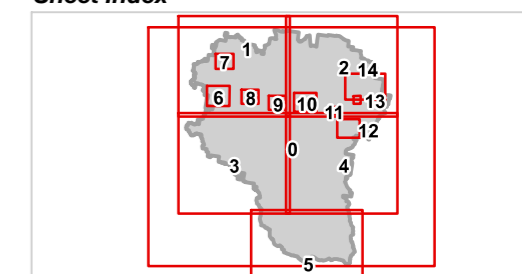


Date: 19/6/2023

Approx Scale @ A3: 1:30,000



**Sheet Index**





REGIONAL COUNCIL

### OM16 Transport noise corridor - information overlay map

#### Transport corridors

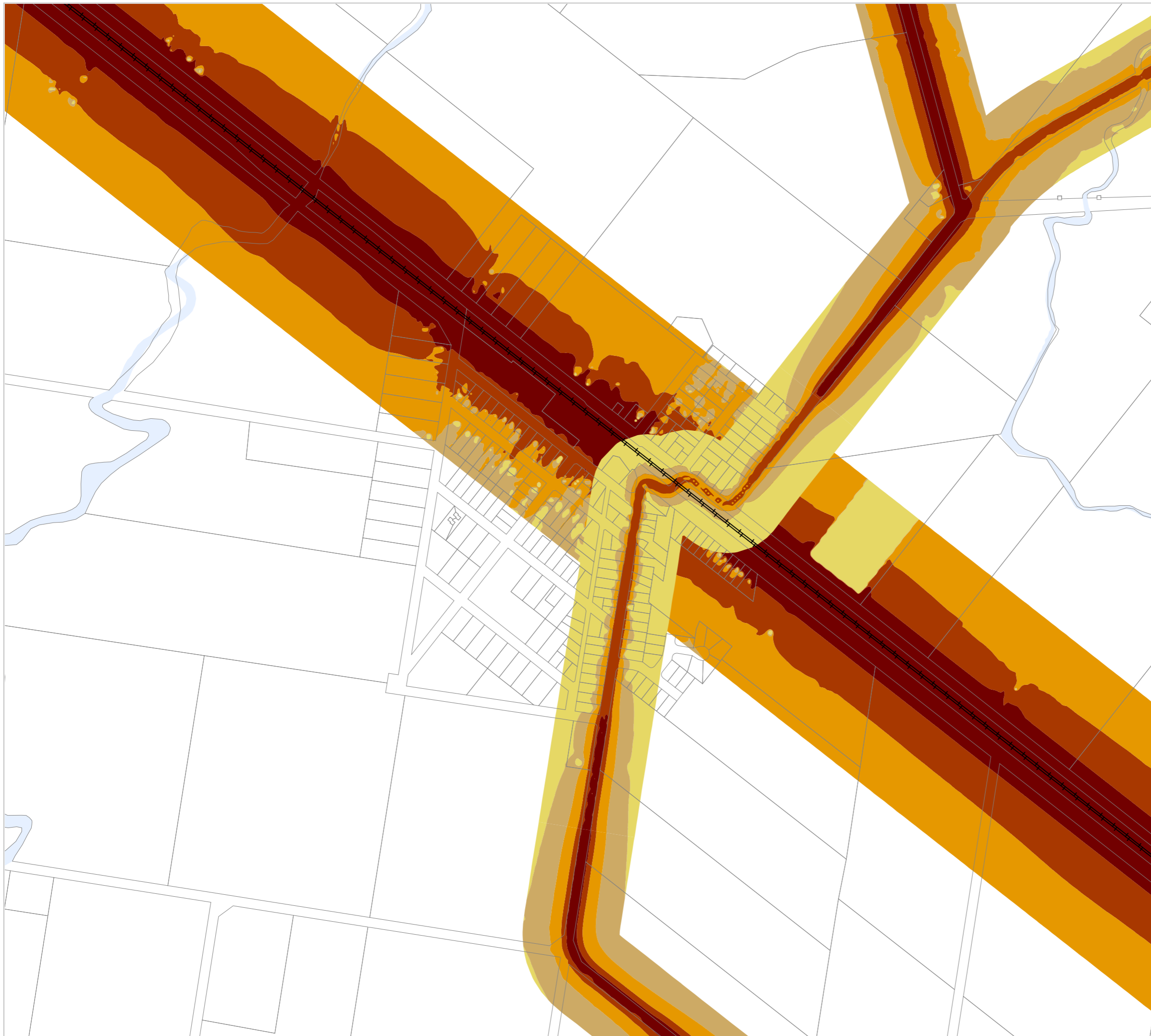
- Future railway corridor
- Future state-controlled road corridor

#### Transport noise categories

- Category 0: Noise Level < 58 dB(A)
- Category 1: 58 dB(A) =< Noise Level < 63 dB(A)
- Category 2: 63 dB(A) =< Noise Level < 68 dB(A)
- Category 3: 68 dB(A) =< Noise Level < 73 dB(A)
- Category 4: Noise Level >= 73 dB(A)

#### Other Features

- Railway Network
- Cadastral boundary
- Local Government Boundary
- Watercourse / Waterbody



#### NOTE

Refer to online or electronic mapping where layers overlap or labels obstruct the data on the map.

#### MAP INFORMATION

Based on or contains data sourced from the State Government which gives no warranty in relation to the data (including accuracy, reliability, completeness or suitability) and accepts no liability (including without limitation, liability in negligence) for any loss, damage or costs (including consequential damage) relating to any use of the data.

© Copyright Lockyer Valley Regional Council 2023

#### DATA SOURCES

Cadastral data weekly - whole of State Queensland, Rail network - Queensland, Baseline roads and tracks - Queensland: © State of Queensland (Department of Resources) 2023. Data sourced 7/12/2020; Noise corridor - State-controlled road (MANDATORY area), Noise corridor - State-controlled road (VOLUNTARY area), Noise corridor - rail network: © State of Queensland (Department of Transport and Main Roads) 2020

Gazettal Date: 00/00/0000

Geocentric Datum of Australia (GDA2020 / MGA zone 56)



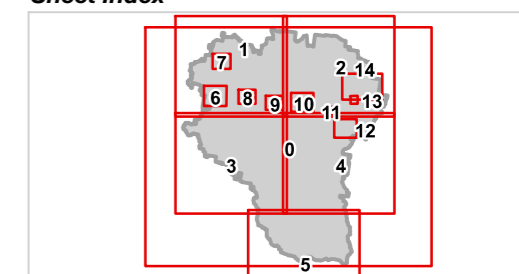
Date: 19/6/2023

Approx Scale @ A3: 1:7,500

0 0.5

kilometres

#### Sheet Index





REGIONAL COUNCIL

### OM16 Transport noise corridor - information overlay map

#### Transport corridors

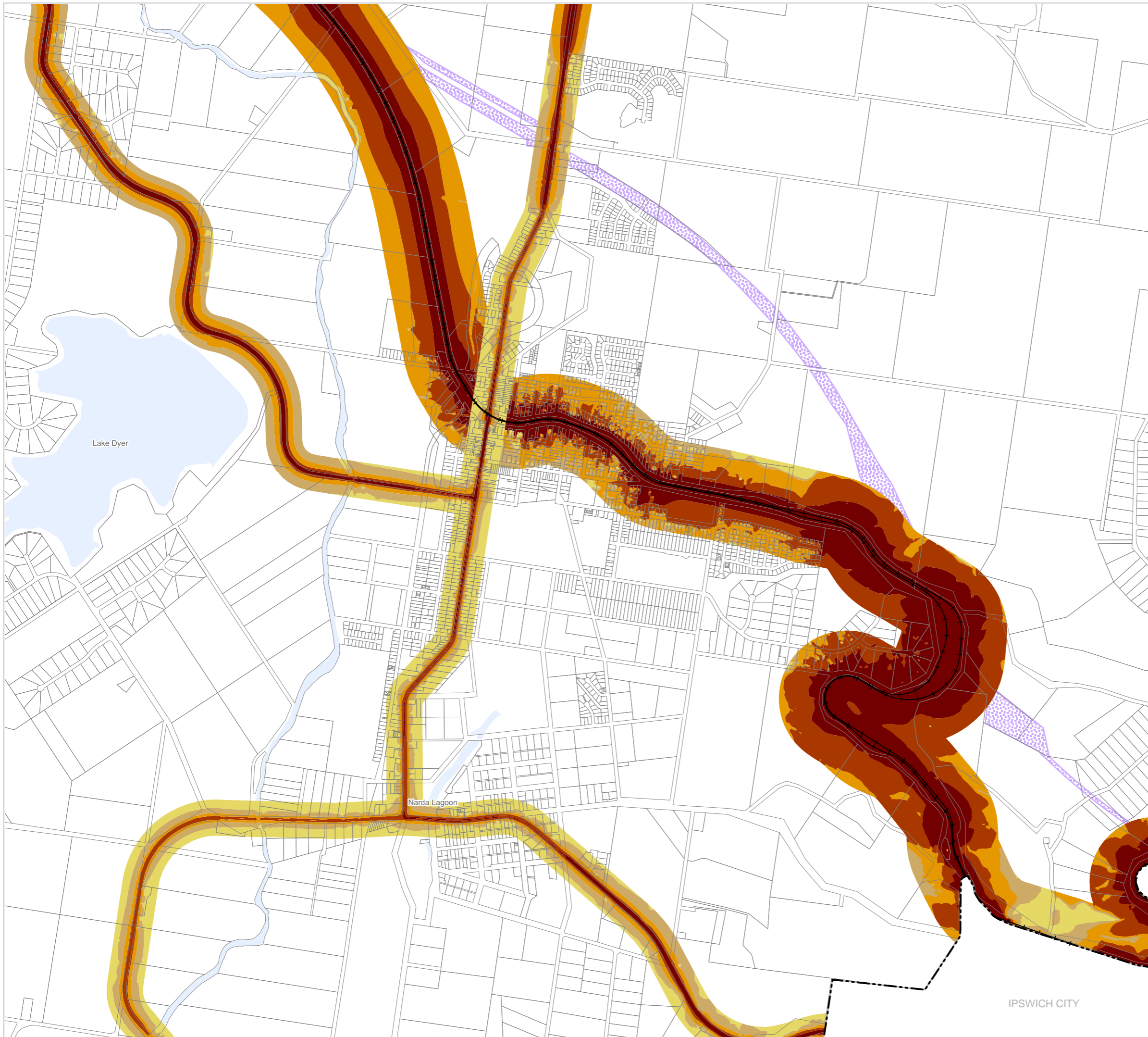
- Future railway corridor
- Future state-controlled road corridor

#### Transport noise categories

- Category 0: Noise Level < 58 dB(A)
- Category 1: 58 dB(A) =< Noise Level < 63 dB(A)
- Category 2: 63 dB(A) =< Noise Level < 68 dB(A)
- Category 3: 68 dB(A) =< Noise Level < 73 dB(A)
- Category 4: Noise Level >= 73 dB(A)

#### Other Features

- Railway Network
- Cadastral boundary
- Local Government Boundary
- Watercourse / Waterbody



#### NOTE

Refer to online or electronic mapping where layers overlap or labels obstruct the data on the map.

#### MAP INFORMATION

Based on or contains data sourced from the State Government which gives no warranty in relation to the data (including accuracy, reliability, completeness or suitability) and accepts no liability (including without limitation, liability in negligence) for any loss, damage or costs (including consequential damage) relating to any use of the data.  
© Copyright Lockyer Valley Regional Council 2023

#### DATA SOURCES

Cadastral data weekly - whole of State Queensland, Rail network - Queensland, Baseline roads and tracks - Queensland: © State of Queensland (Department of Resources) 2023. Data sourced 7/12/2020; Noise corridor - State-controlled road (MANDATORY area), Noise corridor - State-controlled road (VOLUNTARY area), Noise corridor - rail network: © State of Queensland (Department of Transport and Main Roads) 2020

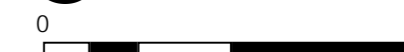
Gazettal Date: 00/00/0000

Geocentric Datum of Australia (GDA2020 / MGA zone 56)



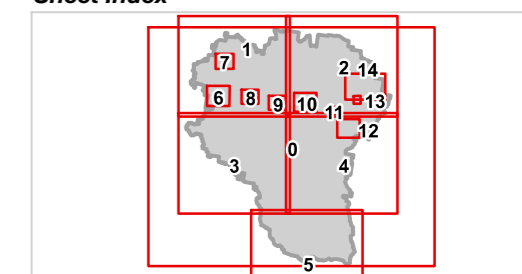
Date: 19/6/2023

Approx Scale @ A3: 1:20,000



kilometres

#### Sheet Index





REGIONAL COUNCIL

### OM16 Transport noise corridor - information overlay map

#### Transport corridors

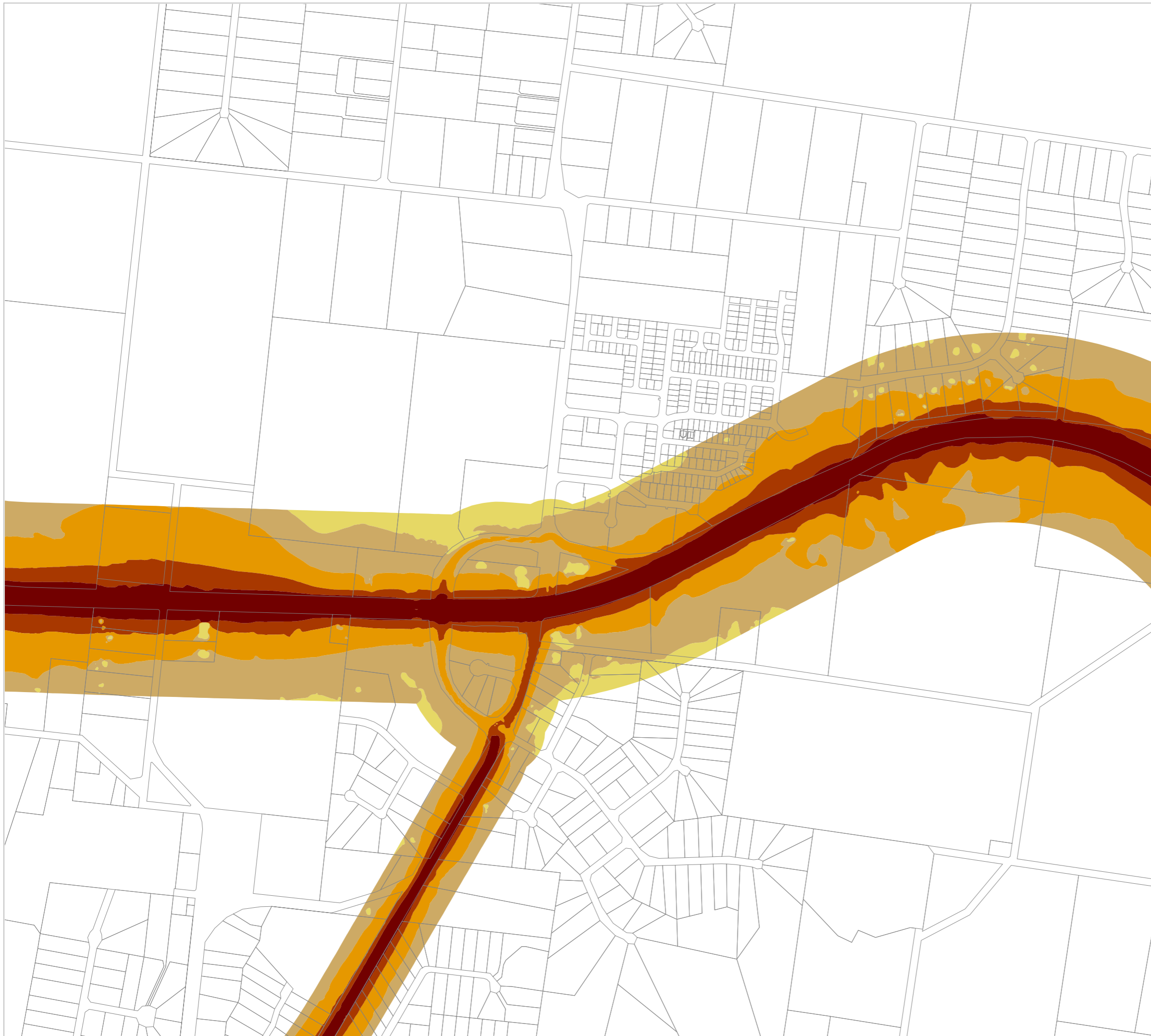
- Future railway corridor
- Future state-controlled road corridor

#### Transport noise categories

- Category 0: Noise Level < 58 dB(A)
- Category 1: 58 dB(A) =< Noise Level < 63 dB(A)
- Category 2: 63 dB(A) =< Noise Level < 68 dB(A)
- Category 3: 68 dB(A) =< Noise Level < 73 dB(A)
- Category 4: Noise Level >= 73 dB(A)

#### Other Features

- Railway Network
- Cadastral boundary
- Local Government Boundary
- Watercourse / Waterbody



#### NOTE

Refer to online or electronic mapping where layers overlap or labels obstruct the data on the map.

#### MAP INFORMATION

Based on or contains data sourced from the State Government which gives no warranty in relation to the data (including accuracy, reliability, completeness or suitability) and accepts no liability (including without limitation, liability in negligence) for any loss, damage or costs (including consequential damage) relating to any use of the data.

© Copyright Lockyer Valley Regional Council 2023

#### DATA SOURCES

Cadastral data weekly - whole of State Queensland, Rail network - Queensland, Baseline roads and tracks - Queensland: © State of Queensland (Department of Resources) 2023. Data sourced 7/12/2020; Noise corridor - State-controlled road (MANDATORY area), Noise corridor - State-controlled road (VOLUNTARY area), Noise corridor - rail network: © State of Queensland (Department of Transport and Main Roads) 2020

Gazettal Date: 00/00/0000

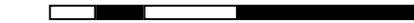
Geocentric Datum of Australia (GDA2020 / MGA zone 56)



Date: 19/6/2023

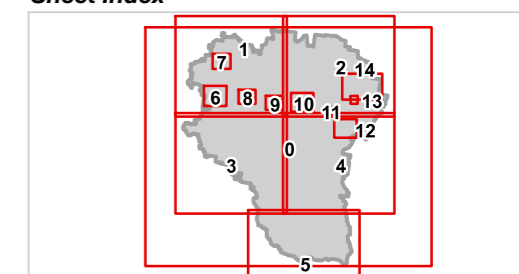
Approx Scale @ A3: 1:10,000

0 0.5



kilometres

#### Sheet Index





REGIONAL COUNCIL

### OM16 Transport noise corridor - information overlay map

SOMERSET REGIONAL

#### Transport corridors

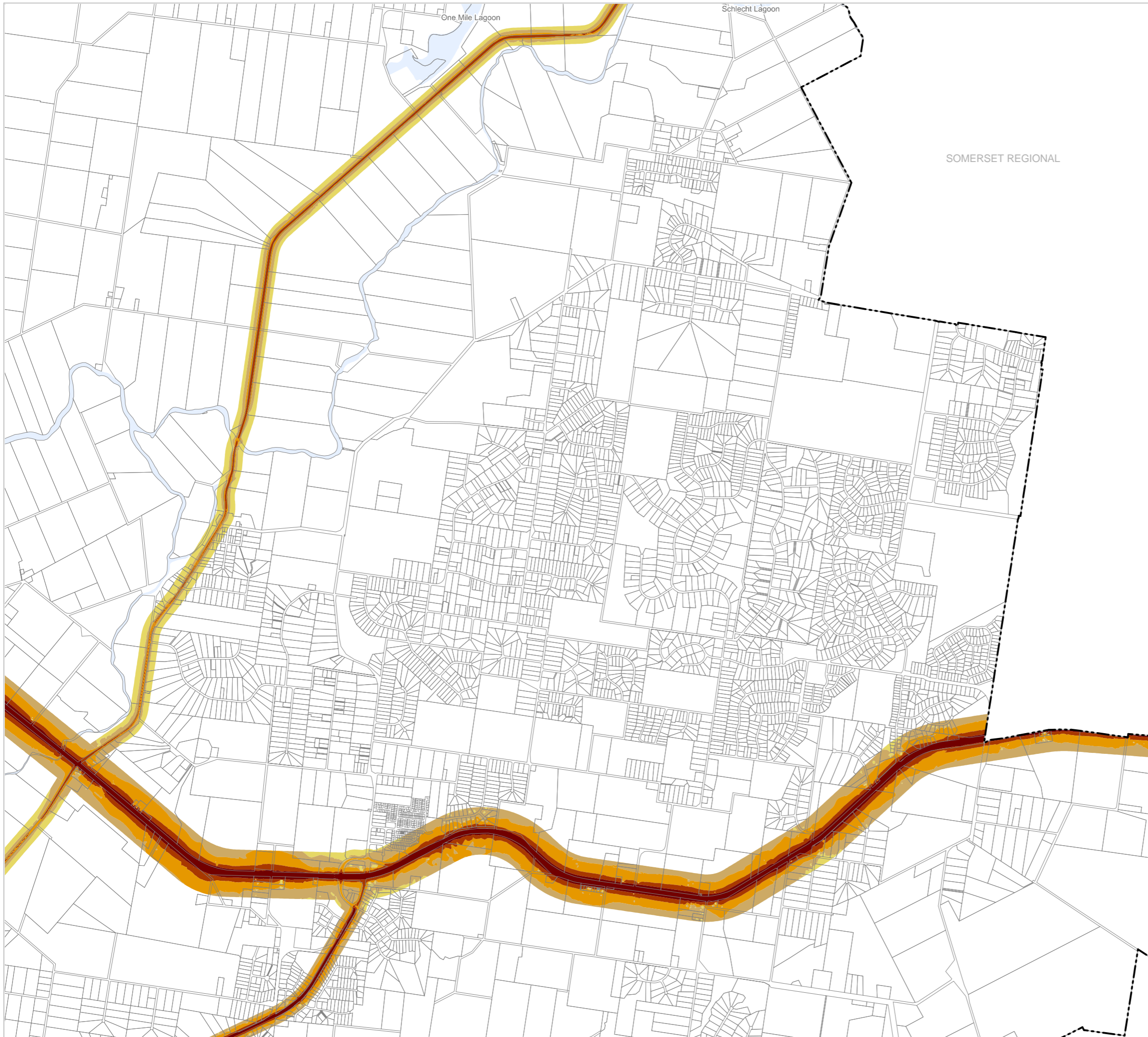
- Future railway corridor
- Future state-controlled road corridor

#### Transport noise categories

- Category 0: Noise Level < 58 dB(A)
- Category 1: 58 dB(A) =< Noise Level < 63 dB(A)
- Category 2: 63 dB(A) =< Noise Level < 68 dB(A)
- Category 3: 68 dB(A) =< Noise Level < 73 dB(A)
- Category 4: Noise Level >= 73 dB(A)

#### Other Features

- Railway Network
- Cadastral boundary
- Local Government Boundary
- Watercourse / Waterbody



#### NOTE

Refer to online or electronic mapping where layers overlap or labels obstruct the data on the map.

#### MAP INFORMATION

Based on or contains data sourced from the State Government which gives no warranty in relation to the data (including accuracy, reliability, completeness or suitability) and accepts no liability (including without limitation, liability in negligence) for any loss, damage or costs (including consequential damage) relating to any use of the data.  
© Copyright Lockyer Valley Regional Council 2023

#### DATA SOURCES

Cadastral data weekly - whole of State Queensland, Rail network - Queensland, Baseline roads and tracks - Queensland: © State of Queensland (Department of Resources) 2023. Data sourced 7/12/2020; Noise corridor - State-controlled road (MANDATORY area), Noise corridor - State-controlled road (VOLUNTARY area), Noise corridor - rail network: © State of Queensland (Department of Transport and Main Roads) 2020

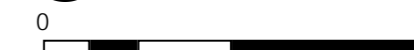
Gazettal Date: 00/00/0000

Geocentric Datum of Australia (GDA2020 / MGA zone 56)



Date: 19/6/2023

Approx Scale @ A3: 1:40,000



kilometres

#### Sheet Index

