



Lockyer Valley Regional Council Draft Planning Scheme

REGIONAL COUNCIL

OM09B Infrastructure overlay map (emissions and hazardous activities)

Chemical facilities

- Major chemical facility
- Hazardous chemical facility
- Chemical facility separation area

Environmental emitting activities

- Emitting facility
- Emission separation area

High pressure gas pipeline

- Pipeline corridor
- High pressure gas pipeline buffer (100m)

Waste infrastructure

- Waste facility
- Waste facility buffer

Other Features

- Major road
- Railway network
- Cadastral boundary
- Local government boundary
- Watercourse / waterbody

NOTE

Refer to online or electronic mapping where layers overlap or labels obstruct the data on the map.

MAP INFORMATION

Based on or contains data sourced from the State Government which gives no warranty in relation to the data (including accuracy, reliability, completeness or suitability) and accepts no liability (including without limitation, liability in negligence) for any loss, damage or costs (including consequential damage) relating to any use of the data.
© Copyright Lockyer Valley Regional Council 2023

DATA SOURCES

Cadastral data weekly - whole of State Queensland, Rail network - Queensland, Baseline roads and tracks - Queensland, Mining leases - Queensland: © State of Queensland (Department of Resources) 2023. High pressure gas pipeline: © Australian Pipelines and Gas Association

Gazettal Date: 00/00/0000

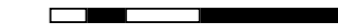
Geocentric Datum of Australia (GDA2020 / MGA zone 56)

Date: 16/6/2023

Approx Scale @ A3: 1:250,000

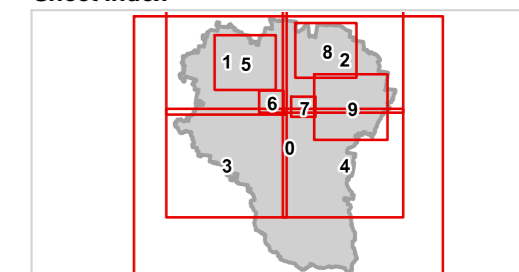


0 10

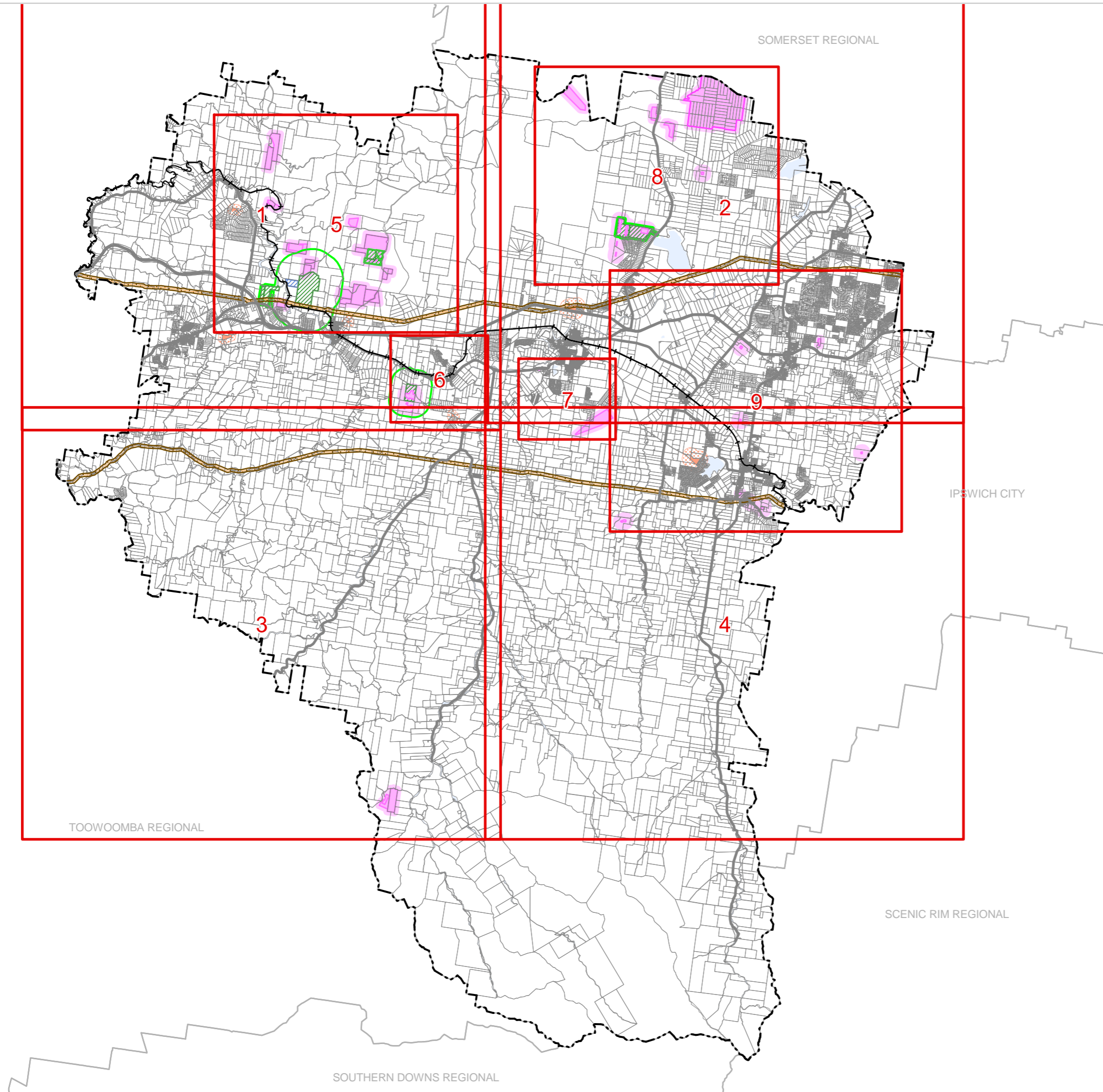


kilometres

Sheet Index



OM09B Infrastructure overlay (emissions and hazardous activities)
Index - 00



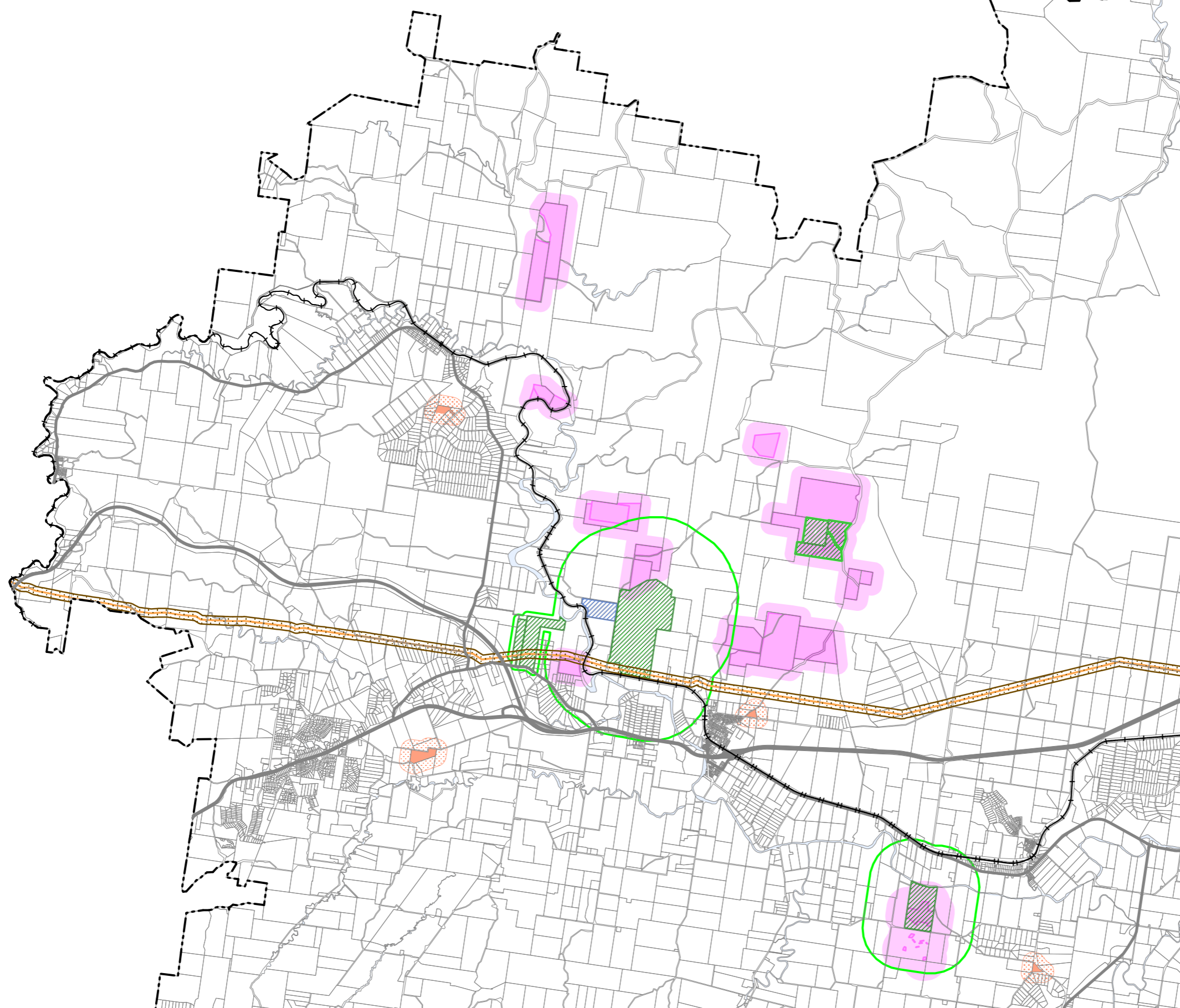


REGIONAL COUNCIL

OM09B Infrastructure overlay map (emissions and hazardous activities)

TOOWOOMBA REGIONAL

SOMERSET REGIONAL



Chemical facilities

- Major chemical facility
- Hazardous chemical facility
- Chemical facility separation area

Environmental emitting activities

- Emitting facility
- Emission separation area

High pressure gas pipeline

- Pipeline corridor
- High pressure gas pipeline buffer (100m)

Waste infrastructure

- Waste facility
- Waste facility buffer

Other Features

- Major road
- Railway network
- Cadastral boundary
- Local government boundary
- Watercourse / waterbody

NOTE

Refer to online or electronic mapping where layers overlap or labels obstruct the data on the map.

MAP INFORMATION

Based on or contains data sourced from the State Government which gives no warranty in relation to the data (including accuracy, reliability, completeness or suitability) and accepts no liability (including without limitation, liability in negligence) for any loss, damage or costs (including consequential damage) relating to any use of the data.

© Copyright Lockyer Valley Regional Council 2023

DATA SOURCES

Cadastral data weekly - whole of State Queensland, Rail network - Queensland, Baseline roads and tracks - Queensland, Mining leases - Queensland: © State of Queensland (Department of Resources) 2023. High pressure gas pipeline: © Australian Pipelines and Gas Association

Gazettal Date: 00/00/0000

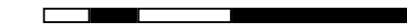
Geocentric Datum of Australia (GDA2020 / MGA zone 56)

Date: 16/6/2023

Approx Scale @ A3: 1:100,000

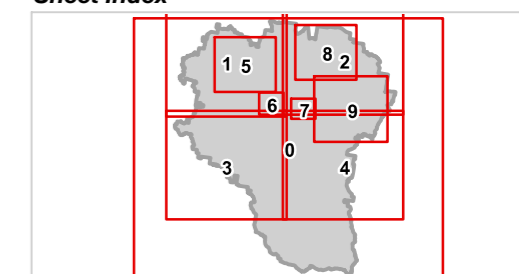


0 5



kilometres

Sheet Index

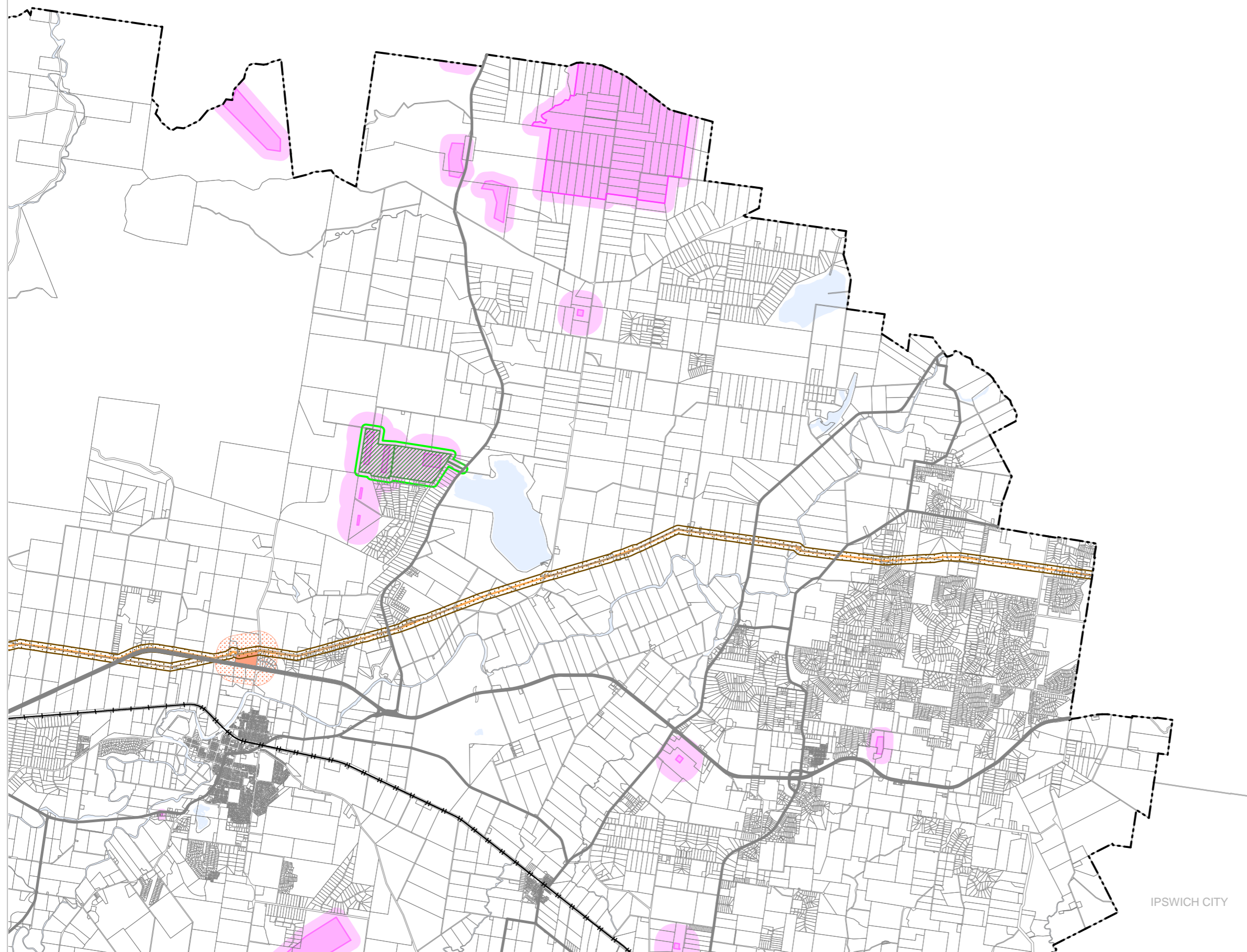




REGIONAL COUNCIL

OM09B Infrastructure overlay map
(emissions and hazardous activities)

SOMERSET REGIONAL



Chemical facilities

- Major chemical facility
- Hazardous chemical facility
- Chemical facility separation area

Environmental emitting activities

- Emitting facility
- Emission separation area

High pressure gas pipeline

- Pipeline corridor
- High pressure gas pipeline buffer (100m)

Waste infrastructure

- Waste facility
- Waste facility buffer

Other Features

- Major road
- Railway network
- Cadastral boundary
- Local government boundary
- Watercourse / waterbody

NOTE

Refer to online or electronic mapping where layers overlap or labels obstruct the data on the map.

MAP INFORMATION

Based on or contains data sourced from the State Government which gives no warranty in relation to the data (including accuracy, reliability, completeness or suitability) and accepts no liability (including without limitation, liability in negligence) for any loss, damage or costs (including consequential damage) relating to any use of the data.
© Copyright Lockyer Valley Regional Council 2023

DATA SOURCES

Cadastral data weekly - whole of State Queensland, Rail network - Queensland, Baseline roads and tracks - Queensland, Mining leases - Queensland: © State of Queensland (Department of Resources) 2023. High pressure gas pipeline: © Australian Pipelines and Gas Association

Gazettal Date: 00/00/0000

Geocentric Datum of Australia (GDA2020 / MGA zone 56)

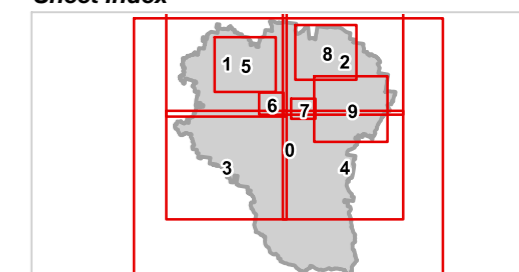


Date: 16/6/2023

Approx Scale @ A3: 1:100,000



Sheet Index



IPSWICH CITY



Lockyer Valley Regional Council Draft Planning Scheme

REGIONAL COUNCIL

OM9B Infrastructure overlay map (emissions and hazardous activities)

Chemical facilities

- Major chemical facility
- Hazardous chemical facility
- Chemical facility separation area

Environmental emitting activities

- Emitting facility
- Emission separation area

High pressure gas pipeline

- Pipeline corridor
- High pressure gas pipeline buffer (100m)

Waste infrastructure

- Waste facility
- Waste facility buffer

Other Features

- Major road
- Railway network
- Cadastral boundary
- Local government boundary
- Watercourse / waterbody

NOTE

Refer to online or electronic mapping where layers overlap or labels obstruct the data on the map.

MAP INFORMATION

Based on or contains data sourced from the State Government which gives no warranty in relation to the data (including accuracy, reliability, completeness or suitability) and accepts no liability (including without limitation, liability in negligence) for any loss, damage or costs (including consequential damage) relating to any use of the data.
© Copyright Lockyer Valley Regional Council 2023

DATA SOURCES

Cadastral data weekly - whole of State Queensland, Rail network - Queensland, Baseline roads and tracks - Queensland, Mining leases - Queensland: © State of Queensland (Department of Resources) 2023. High pressure gas pipeline: © Australian Pipelines and Gas Association

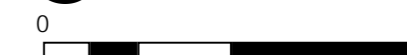
Gazettal Date: 00/00/0000

Geocentric Datum of Australia (GDA2020 / MGA zone 56)

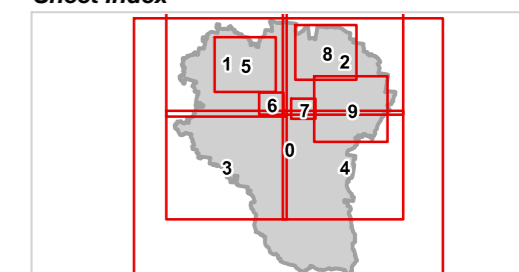


Date: 16/6/2023

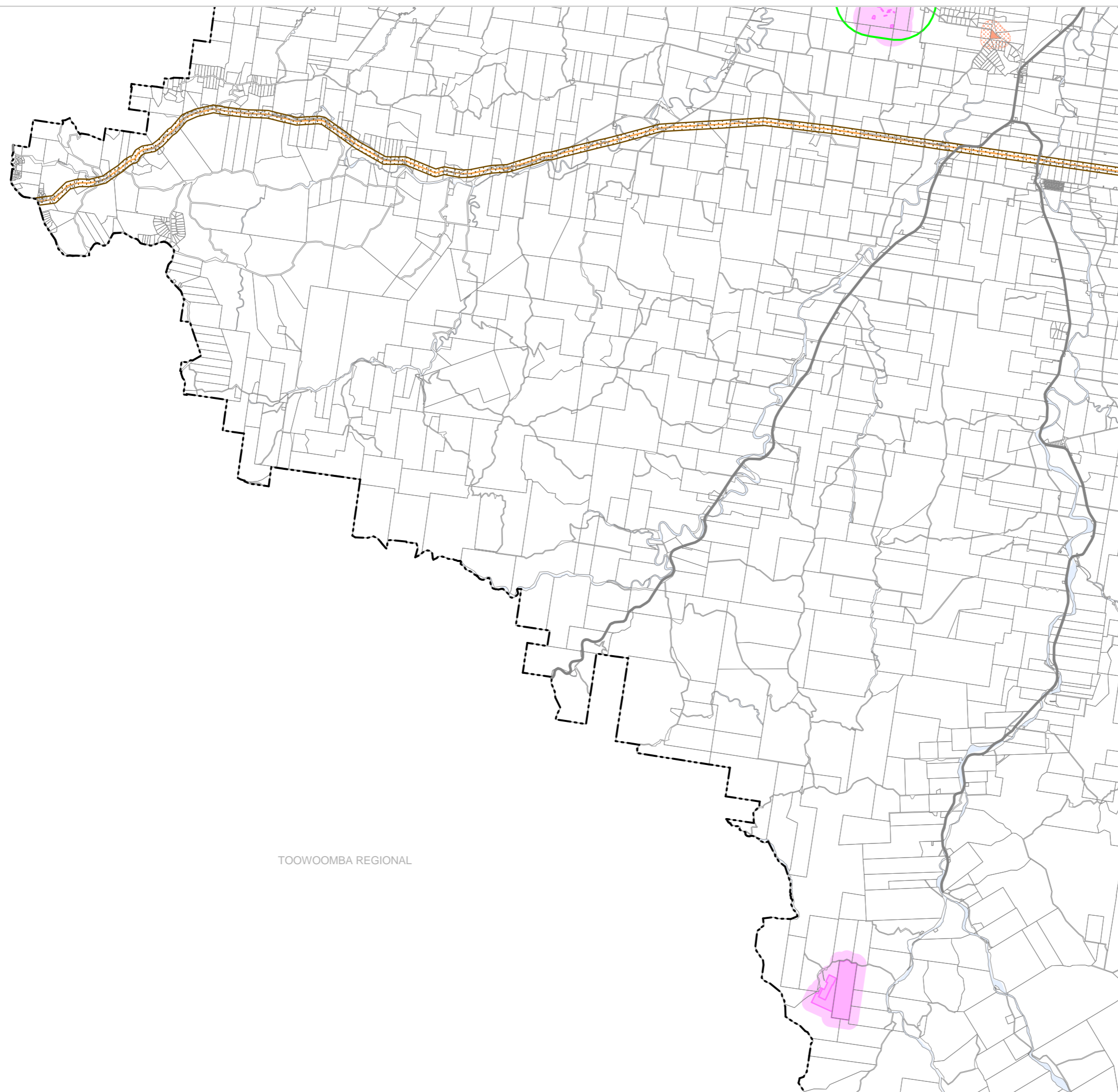
Approx Scale @ A3: 1:100,000



Sheet Index



**OM9B Infrastructure overlay (emissions and hazardous activities)
LGA south-west - 03**



TOOWOOMBA REGIONAL



Lockyer Valley Regional Council Draft Planning Scheme

REGIONAL COUNCIL

OM9B Infrastructure overlay map (emissions and hazardous activities)

Chemical facilities

- Major chemical facility
- Hazardous chemical facility
- Chemical facility separation area

Environmental emitting activities

- Emitting facility
- Emission separation area

High pressure gas pipeline

- Pipeline corridor
- High pressure gas pipeline buffer (100m)

Waste infrastructure

- Waste facility
- Waste facility buffer

Other Features

- Major road
- Railway network
- Cadastral boundary
- Local government boundary
- Watercourse / waterbody

NOTE

Refer to online or electronic mapping where layers overlap or labels obstruct the data on the map.

MAP INFORMATION

Based on or contains data sourced from the State Government which gives no warranty in relation to the data (including accuracy, reliability, completeness or suitability) and accepts no liability (including without limitation, liability in negligence) for any loss, damage or costs (including consequential damage) relating to any use of the data.
© Copyright Lockyer Valley Regional Council 2023

DATA SOURCES

Cadastral data weekly - whole of State Queensland, Rail network - Queensland, Baseline roads and tracks - Queensland, Mining leases - Queensland: © State of Queensland (Department of Resources) 2023. High pressure gas pipeline: © Australian Pipelines and Gas Association

Gazettal Date: 00/00/0000

Geocentric Datum of Australia (GDA2020 / MGA zone 56)

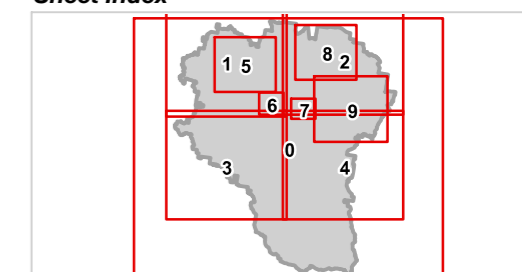


Date: 16/6/2023

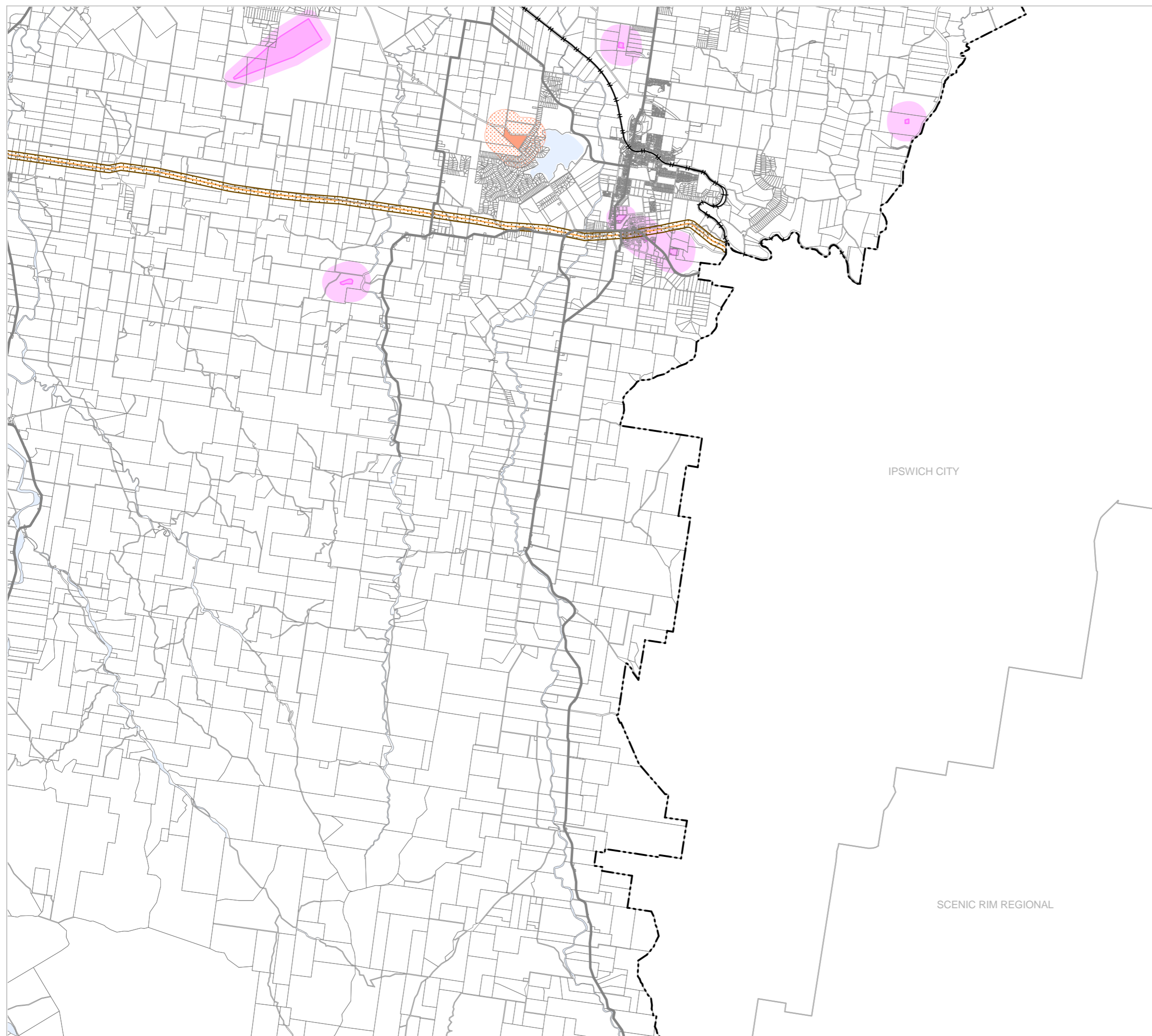
Approx Scale @ A3: 1:100,000



Sheet Index



**OM9B Infrastructure overlay (emissions and hazardous activities)
LGA south-east - 04**





Lockyer Valley Regional Council Draft Planning Scheme

REGIONAL COUNCIL

OM09B Infrastructure overlay map (emissions and hazardous activities)

Chemical facilities

- Major chemical facility
- Hazardous chemical facility
- Chemical facility separation area

Environmental emitting activities

- Emitting facility
- Emission separation area

High pressure gas pipeline

- Pipeline corridor
- High pressure gas pipeline buffer (100m)

Waste infrastructure

- Waste facility
- Waste facility buffer

Other Features

- Major road
- Railway network
- Cadastral boundary
- Local government boundary
- Watercourse / waterbody

NOTE

Refer to online or electronic mapping where layers overlap or labels obstruct the data on the map.

MAP INFORMATION

Based on or contains data sourced from the State Government which gives no warranty in relation to the data (including accuracy, reliability, completeness or suitability) and accepts no liability (including without limitation, liability in negligence) for any loss, damage or costs (including consequential damage) relating to any use of the data.
© Copyright Lockyer Valley Regional Council 2023

DATA SOURCES

Cadastral data weekly - whole of State Queensland, Rail network - Queensland, Baseline roads and tracks - Queensland, Mining leases - Queensland: © State of Queensland (Department of Resources) 2023. High pressure gas pipeline: © Australian Pipelines and Gas Association

Gazettal Date: 00/00/0000

Geocentric Datum of Australia (GDA2020 / MGA zone 56)



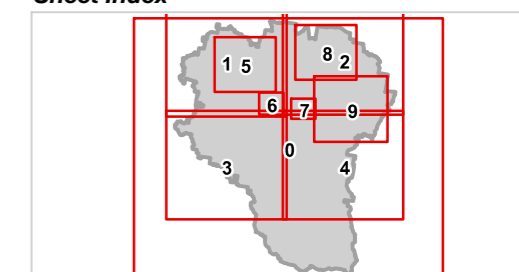
Date: 16/6/2023

Approx Scale @ A3: 1:50,000

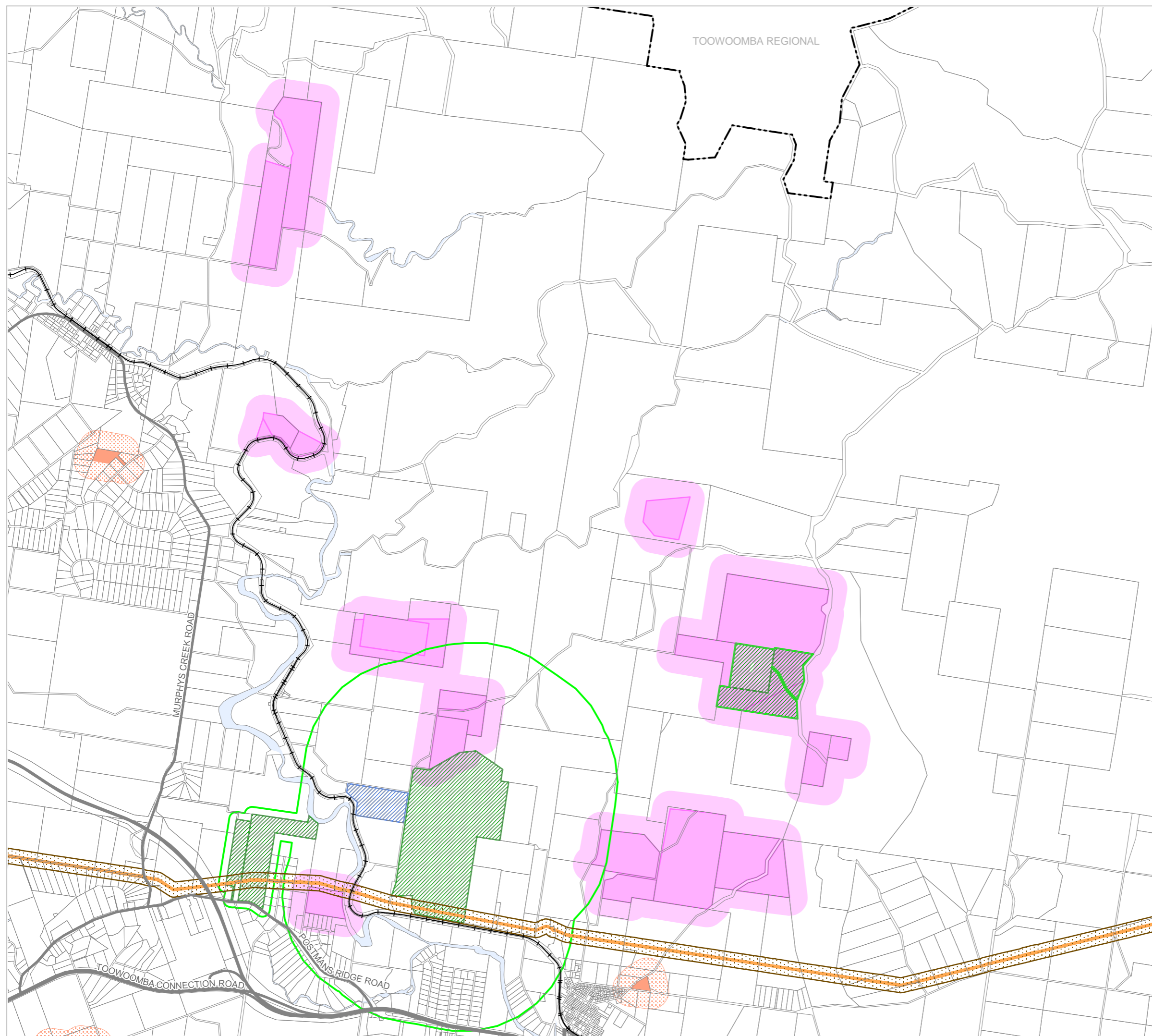
0 2.5

kilometres

Sheet Index



**OM09B Infrastructure overlay (emissions and hazardous activities)
Helidon - 05**





Lockyer Valley Regional Council Draft Planning Scheme

REGIONAL COUNCIL

OM09B Infrastructure overlay map (emissions and hazardous activities)

Chemical facilities

- Major chemical facility
- Hazardous chemical facility
- Chemical facility separation area

Environmental emitting activities

- Emitting facility
- Emission separation area

High pressure gas pipeline

- Pipeline corridor
- High pressure gas pipeline buffer (100m)

Waste infrastructure

- Waste facility
- Waste facility buffer

Other Features

- Major road
- Railway network
- Cadastral boundary
- Local government boundary
- Watercourse / waterbody

NOTE

Refer to online or electronic mapping where layers overlap or labels obstruct the data on the map.

MAP INFORMATION

Based on or contains data sourced from the State Government which gives no warranty in relation to the data (including accuracy, reliability, completeness or suitability) and accepts no liability (including without limitation, liability in negligence) for any loss, damage or costs (including consequential damage) relating to any use of the data.
© Copyright Lockyer Valley Regional Council 2023

DATA SOURCES

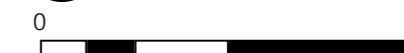
Cadastral data weekly - whole of State Queensland, Rail network - Queensland, Baseline roads and tracks - Queensland, Mining leases - Queensland: © State of Queensland (Department of Resources) 2023. High pressure gas pipeline: © Australian Pipelines and Gas Association

Gazettal Date: 00/00/0000

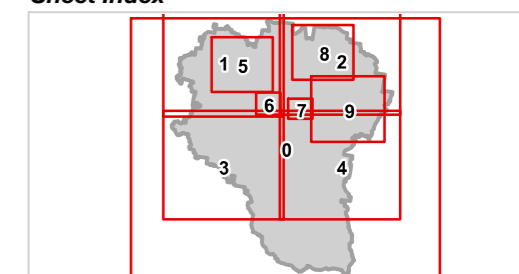
Geocentric Datum of Australia (GDA2020 / MGA zone 56)

Date: 16/6/2023

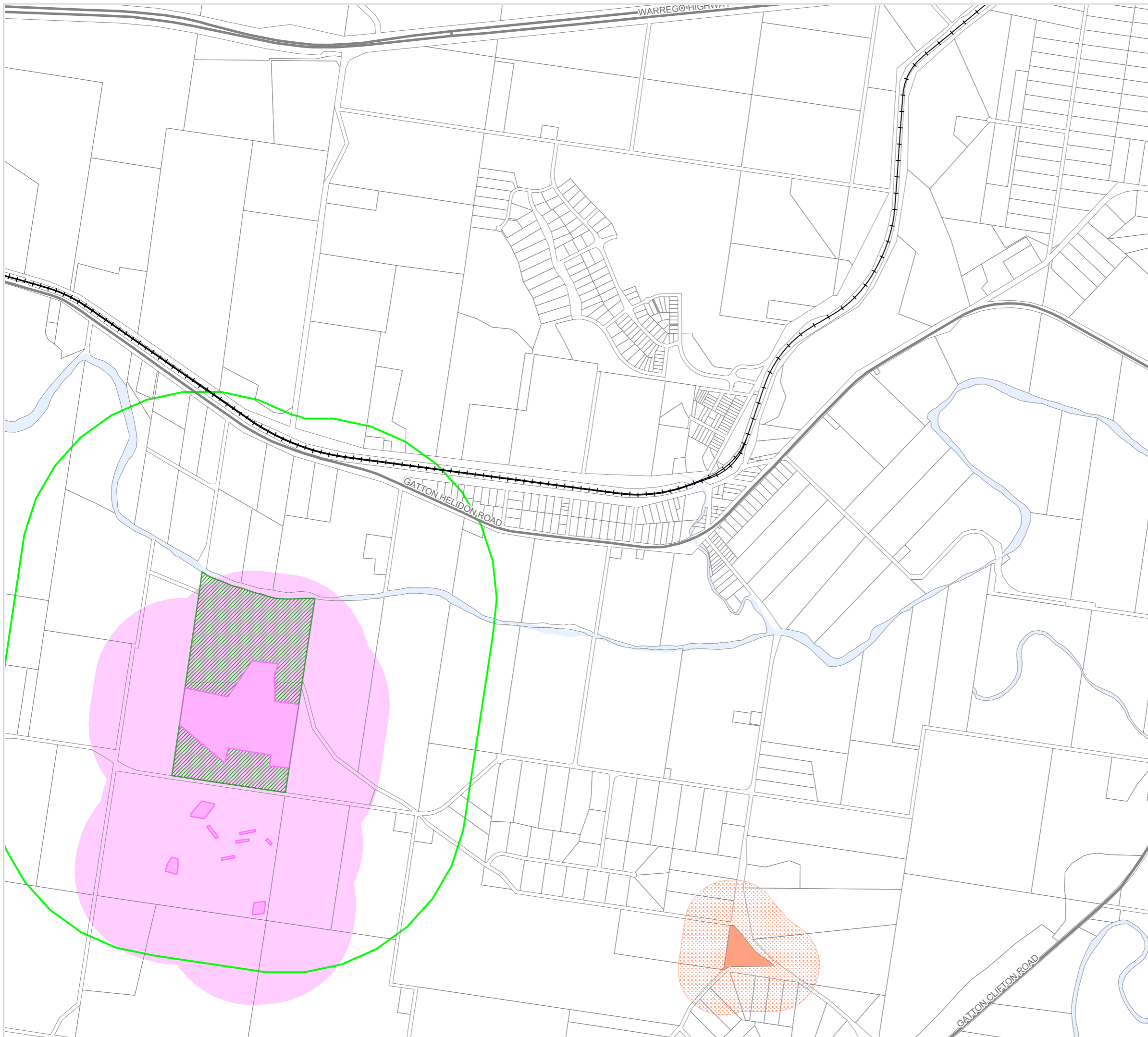
Approx Scale @ A3: 1:20,000



Sheet Index



OM09B Infrastructure overlay (emissions and hazardous activities) Grantham - 06





Lockyer Valley Regional Council Draft Planning Scheme

REGIONAL COUNCIL

OM09B Infrastructure overlay map (emissions and hazardous activities)

Chemical facilities

- Major chemical facility
- Hazardous chemical facility
- Chemical facility separation area

Environmental emitting activities

- Emitting facility
- Emission separation area

High pressure gas pipeline

- Pipeline corridor
- High pressure gas pipeline buffer (100m)

Waste infrastructure

- Waste facility
- Waste facility buffer

Other Features

- Major road
- Railway network
- Cadastral boundary
- Local government boundary
- Watercourse / waterbody

NOTE

Refer to online or electronic mapping where layers overlap or labels obstruct the data on the map.

MAP INFORMATION

Based on or contains data sourced from the State Government which gives no warranty in relation to the data (including accuracy, reliability, completeness or suitability) and accepts no liability (including without limitation, liability in negligence) for any loss, damage or costs (including consequential damage) relating to any use of the data.
© Copyright Lockyer Valley Regional Council 2023

DATA SOURCES

Cadastral data weekly - whole of State Queensland, Rail network - Queensland, Baseline roads and tracks - Queensland, Mining leases - Queensland: © State of Queensland (Department of Resources) 2023. High pressure gas pipeline: © Australian Pipelines and Gas Association

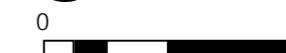
Gazettal Date: 00/00/0000

Geocentric Datum of Australia (GDA2020 / MGA zone 56)



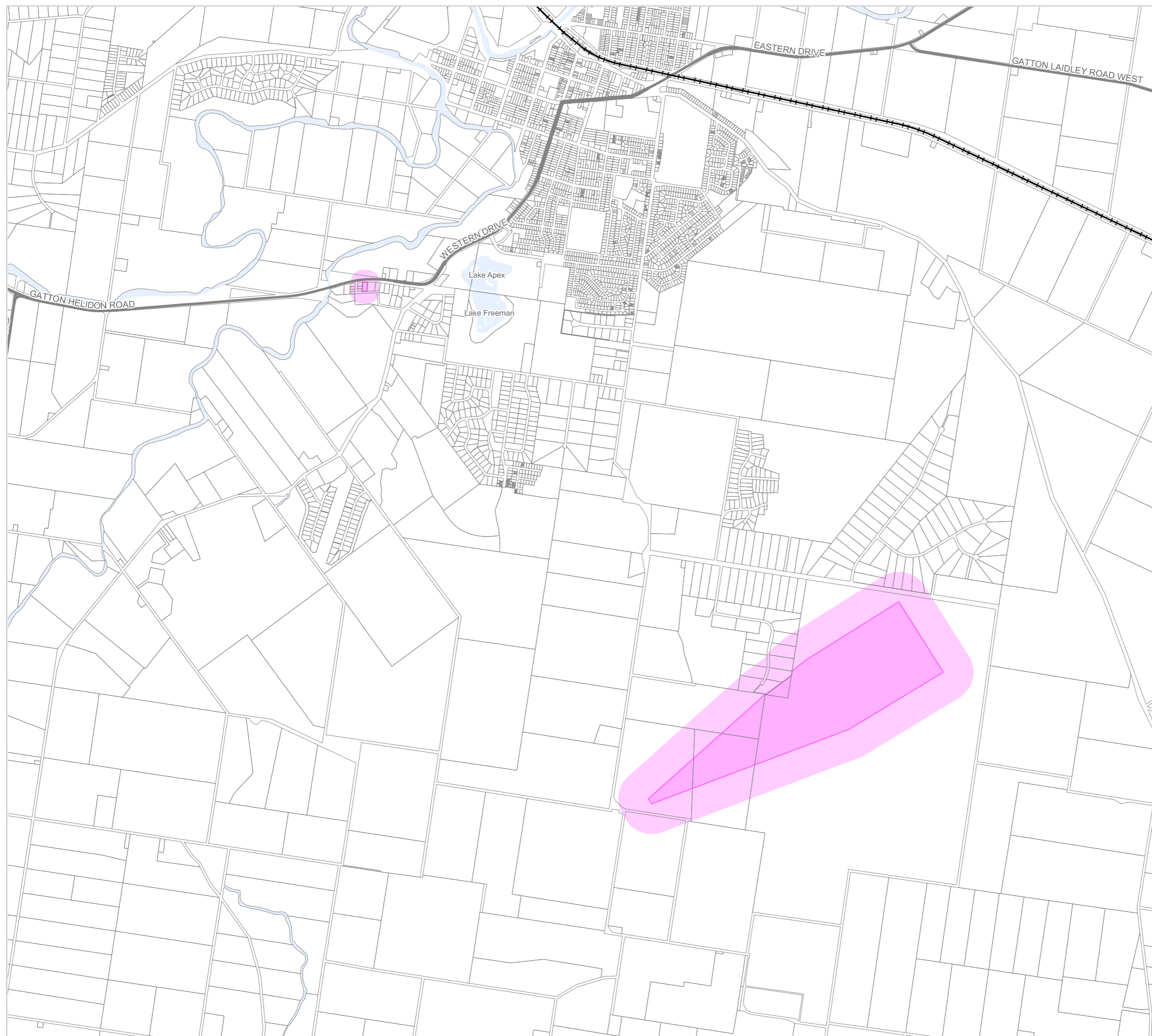
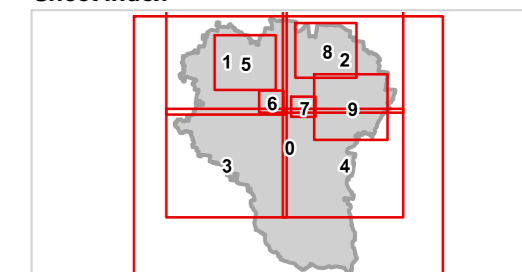
Date: 16/6/2023

Approx Scale @ A3: 1:30,000



kilometres

Sheet Index





Lockyer Valley Regional Council Draft Planning Scheme

REGIONAL COUNCIL

OM09B Infrastructure overlay map (emissions and hazardous activities)

Chemical facilities

- Major chemical facility
- Hazardous chemical facility
- Chemical facility separation area

Environmental emitting activities

- Emitting facility
- Emission separation area

High pressure gas pipeline

- Pipeline corridor
- High pressure gas pipeline buffer (100m)

Waste infrastructure

- Waste facility
- Waste facility buffer

Other Features

- Major road
- Railway network
- Cadastral boundary
- Local government boundary
- Watercourse / waterbody

NOTE

Refer to online or electronic mapping where layers overlap or labels obstruct the data on the map.

MAP INFORMATION

Based on or contains data sourced from the State Government which gives no warranty in relation to the data (including accuracy, reliability, completeness or suitability) and accepts no liability (including without limitation, liability in negligence) for any loss, damage or costs (including consequential damage) relating to any use of the data.
© Copyright Lockyer Valley Regional Council 2023

DATA SOURCES

Cadastral data weekly - whole of State Queensland, Rail network - Queensland, Baseline roads and tracks - Queensland, Mining leases - Queensland: © State of Queensland (Department of Resources) 2023. High pressure gas pipeline: © Australian Pipelines and Gas Association

Gazettal Date: 00/00/0000

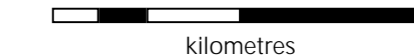
Geocentric Datum of Australia (GDA2020 / MGA zone 56)

Date: 16/6/2023

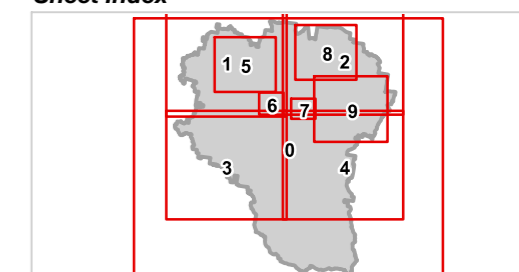
Approx Scale @ A3: 1:50,000



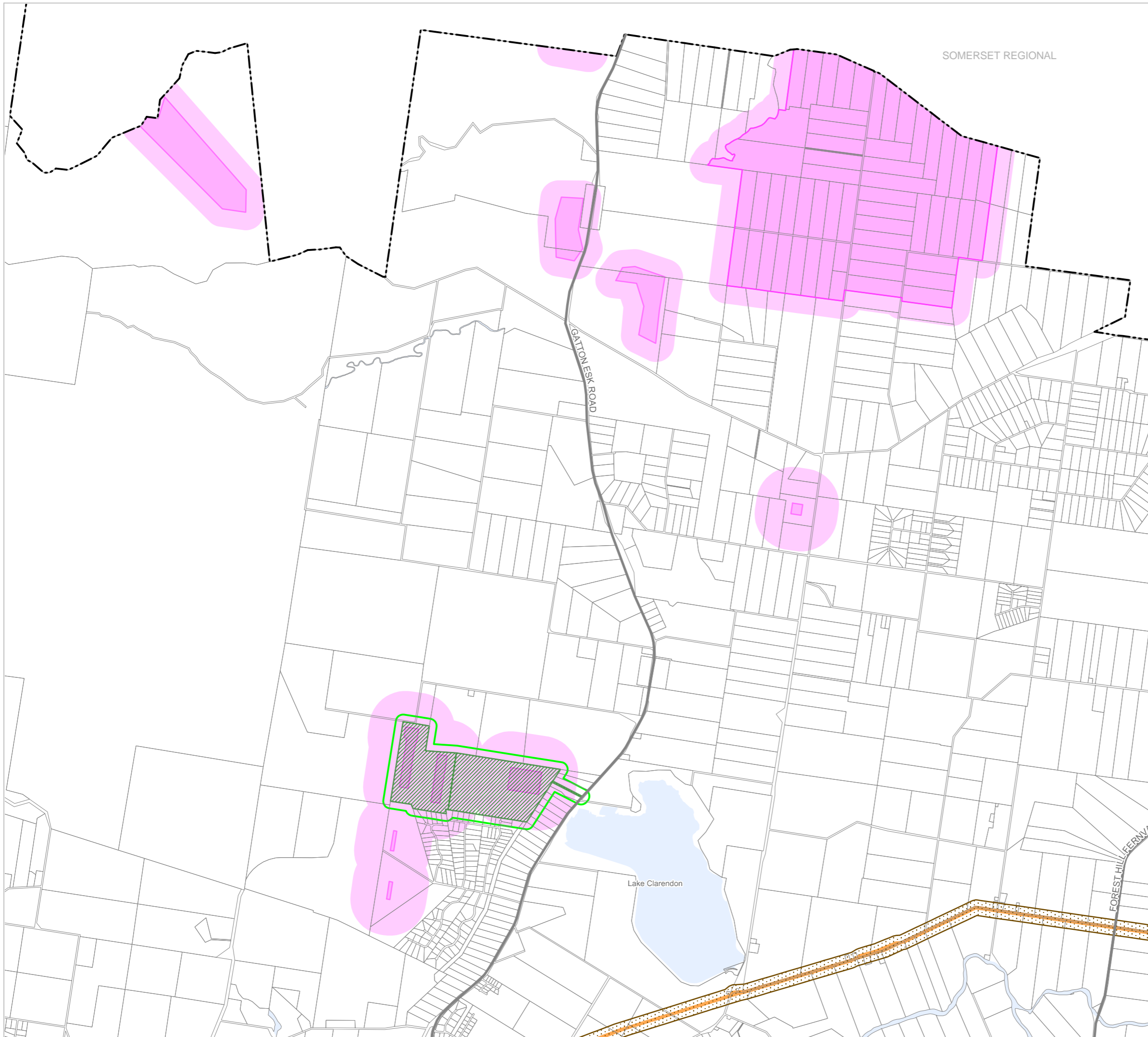
0 2.5



Sheet Index



**OM09B Infrastructure overlay (emissions and hazardous activities)
Lockyer Waters - 08**





Lockyer Valley Regional Council Draft Planning Scheme

REGIONAL COUNCIL

OM09B Infrastructure overlay map (emissions and hazardous activities)

Chemical facilities

- Major chemical facility
- Hazardous chemical facility
- Chemical facility separation area

Environmental emitting activities

- Emitting facility
- Emission separation area

High pressure gas pipeline

- Pipeline corridor
- High pressure gas pipeline buffer (100m)

Waste infrastructure

- Waste facility
- Waste facility buffer

Other Features

- Major road
- Railway network
- Cadastral boundary
- Local government boundary
- Watercourse / waterbody

NOTE

Refer to online or electronic mapping where layers overlap or labels obstruct the data on the map.

MAP INFORMATION

Based on or contains data sourced from the State Government which gives no warranty in relation to the data (including accuracy, reliability, completeness or suitability) and accepts no liability (including without limitation, liability in negligence) for any loss, damage or costs (including consequential damage) relating to any use of the data.
© Copyright Lockyer Valley Regional Council 2023

DATA SOURCES

Cadastral data weekly - whole of State Queensland, Rail network - Queensland, Baseline roads and tracks - Queensland, Mining leases - Queensland: © State of Queensland (Department of Resources) 2023. High pressure gas pipeline: © Australian Pipelines and Gas Association

Gazettal Date: 00/00/0000

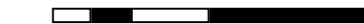
Geocentric Datum of Australia (GDA2020 / MGA zone 56)

Date: 16/6/2023

Approx Scale @ A3: 1:60,000

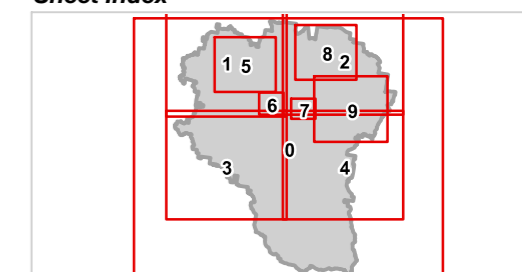


0 2.5

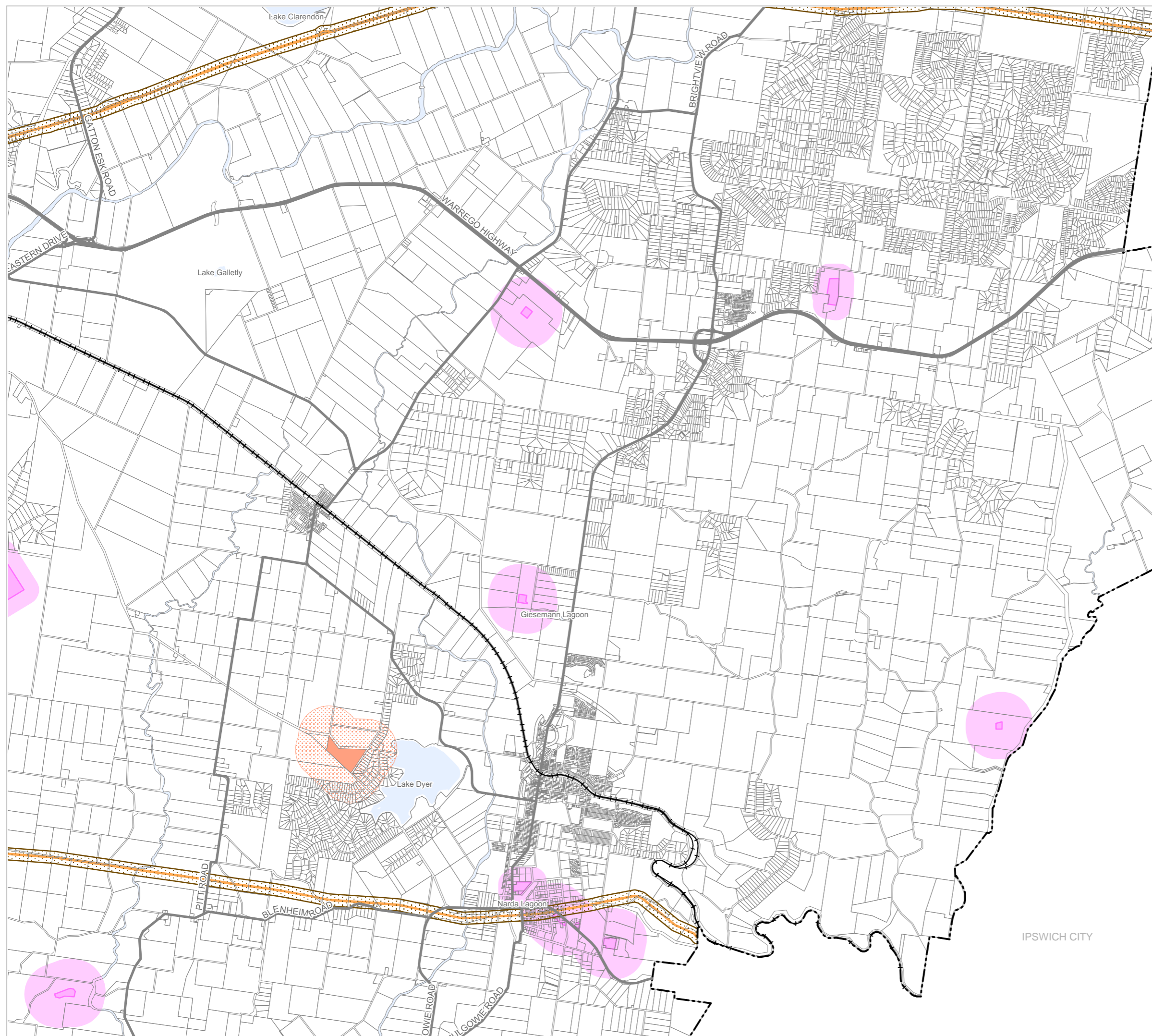


kilometres

Sheet Index



OM09B Infrastructure overlay (emissions and hazardous activities)
Laidley - 09



IPSWICH CITY