



REGIONAL COUNCIL

SFM4B Strategic Framework - Sustaining the natural environment - Landscape map

Sustaining the environment

Landscape features

- Scenic landscape area
- Scenic routes and trails
- Lockyer Creek water resource catchment
- Mountain range
- Mountain peak
- Waterbodies and wetlands
- Scenic lookout
- Regional gateway

Cultural heritage parties

- Githabul People (Waringh Waringh)
- Jagera People #2
- Western Wakka Wakka People
- Yuggera Ugarapul People

Other Features

- Major Road
- Railway Network
- Property boundary
- Local government boundary
- Watercourse / Waterbody

NOTE

Refer to online or electronic mapping where layers overlap or labels obstruct the data on the map.

MAP INFORMATION

Based on or contains data sourced from the State Government 2023 which gives no warranty in relation to the data (including accuracy, reliability, completeness or suitability) and accepts no liability (including without limitation, liability in negligence) for any loss, damage or costs (including consequential damage) relating to any use of the data. © Copyright Lockyer Valley Regional Council 2023

DATA SOURCES

Cadastral data weekly - whole of State Queensland, Rail network - Queensland, Baseline roads and tracks - Queensland; © State of Queensland (Department of Resources) 2023.

Gazettal Date: 00/00/0000

Geocentric Datum of Australia (GDA2020 / MGA zone 56)



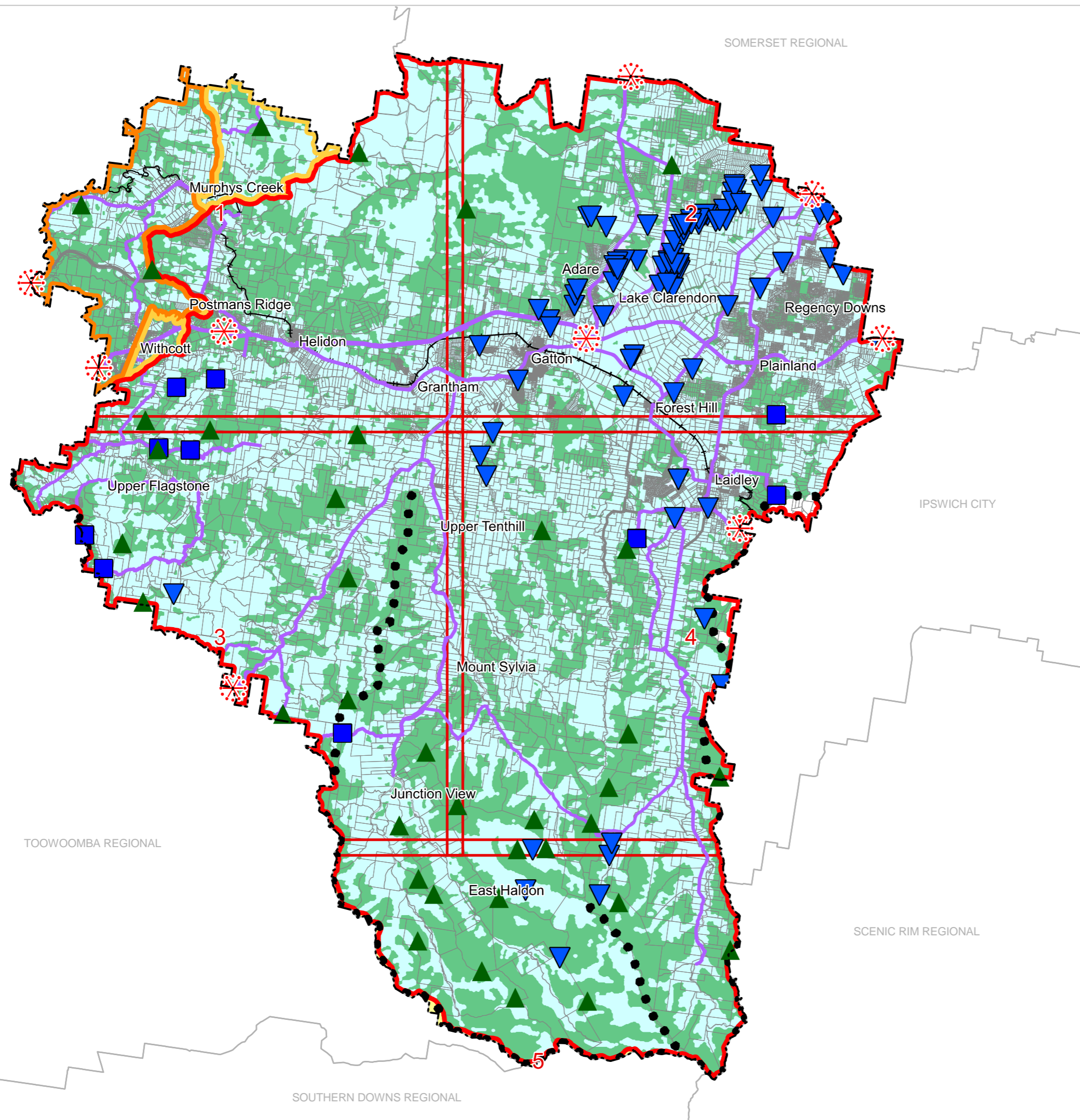
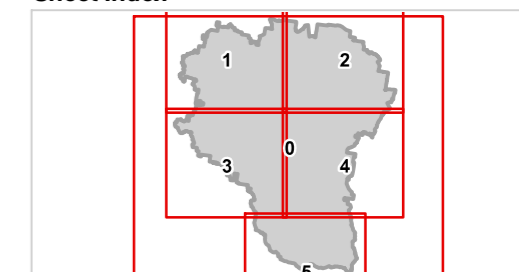
Date: 21/6/2023

Approx Scale @ A3: 1:250,000



kilometres

Sheet Index





REGIONAL COUNCIL

**SFM4B Strategic Framework -  
Sustaining the natural environment -  
Landscape map**

**Sustaining the environment**

Landscape features

- Scenic landscape area
- Scenic routes and trails
- Lockyer Creek water resource catchment
- Mountain range
- Mountain peak
- Waterbodies and wetlands
- Scenic lookout
- Regional gateway

Cultural heritage parties

- Githabul People (Waringh Waringh)
- Jagera People #2
- Western Wakka Wakka People
- Yuggera Ugarapul People

**Other Features**

- Major Road
- Railway Network
- Property boundary
- Local government boundary
- Watercourse / Waterbody

**NOTE**

Refer to online or electronic mapping where layers overlap or labels obstruct the data on the map.

**MAP INFORMATION**

Based on or contains data sourced from the State Government 2023 which gives no warranty in relation to the data (including accuracy, reliability, completeness or suitability) and accepts no liability (including without limitation, liability in negligence) for any loss, damage or costs (including consequential damage) relating to any use of the data.  
© Copyright Lockyer Valley Regional Council 2023

**DATA SOURCES**

Cadastral data weekly - whole of State Queensland, Rail network - Queensland, Baseline roads and tracks - Queensland: © State of Queensland (Department of Resources) 2023.

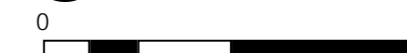
Gazettal Date: 00/00/0000

Geocentric Datum of Australia (GDA2020 / MGA zone 56)

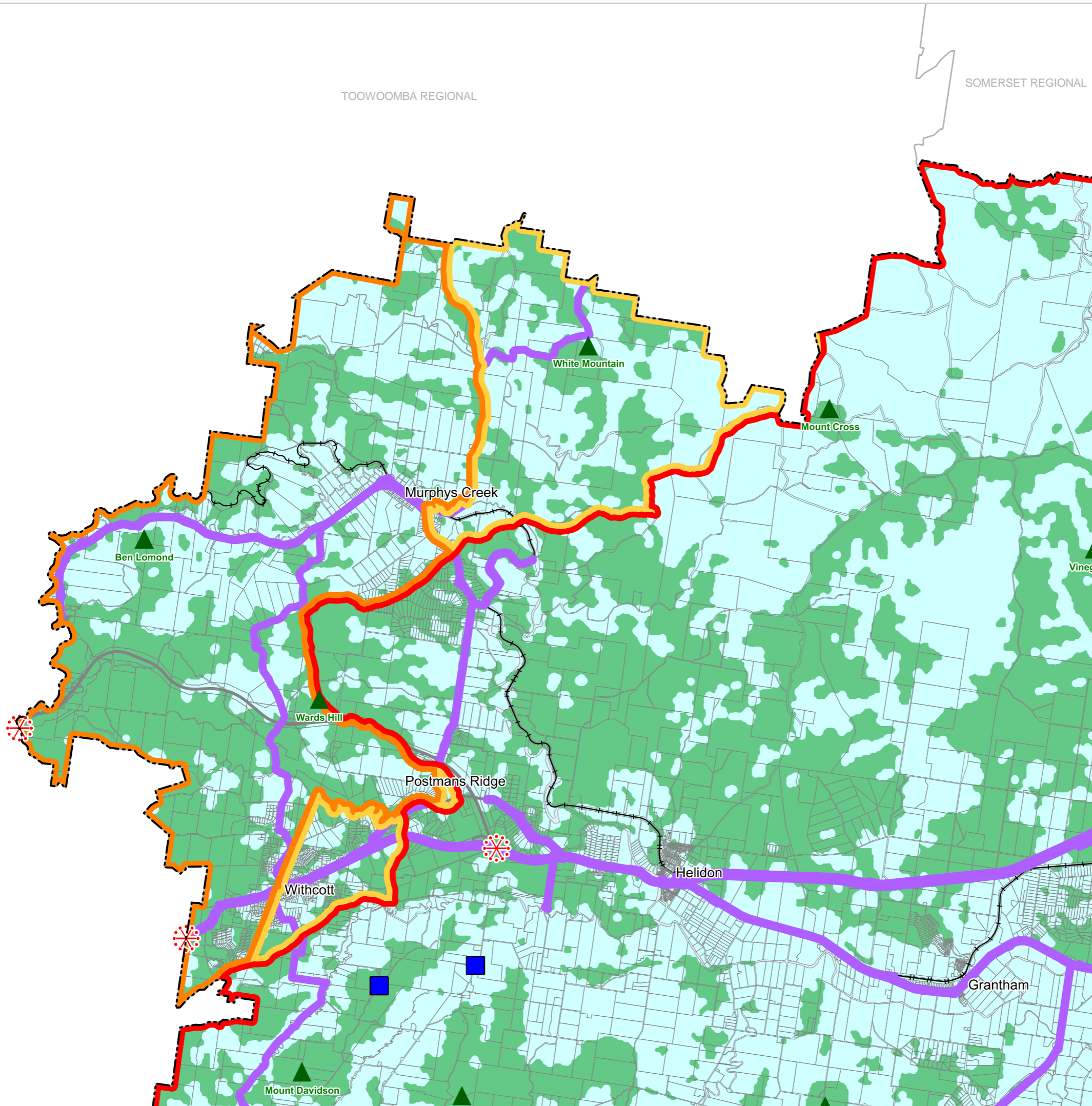
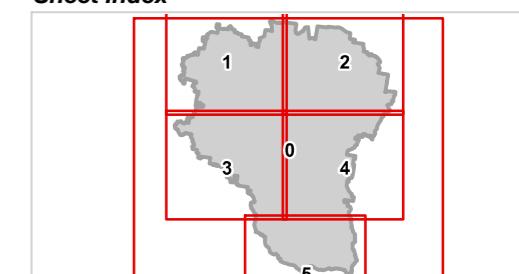


Date: 21/6/2023

Approx Scale @ A3: 1:100,000



**Sheet Index**





REGIONAL COUNCIL

SFM4B Strategic Framework -  
Sustaining the natural environment -  
Landscape map

Sustaining the environment

Landscape features

- Scenic landscape area
- Scenic routes and trails
- Lockyer Creek water resource catchment
- Mountain range
- Mountain peak
- Waterbodies and wetlands
- Scenic lookout
- Regional gateway

Cultural heritage parties

- Githabul People (Waringh Waringh)
- Jagera People #2
- Western Wakka Wakka People
- Yuggera Ugarapul People

Other Features

- Major Road
- Railway Network
- Property boundary
- Local government boundary
- Watercourse / Waterbody

NOTE

Refer to online or electronic mapping where layers overlap or labels obstruct the data on the map.

MAP INFORMATION

Based on or contains data sourced from the State Government 2023 which gives no warranty in relation to the data (including accuracy, reliability, completeness or suitability) and accepts no liability (including without limitation, liability in negligence) for any loss, damage or costs (including consequential damage) relating to any use of the data.  
© Copyright Lockyer Valley Regional Council 2023

DATA SOURCES

Cadastral data weekly - whole of State Queensland, Rail network - Queensland, Baseline roads and tracks - Queensland: © State of Queensland (Department of Resources) 2023.

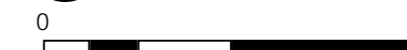
Gazettal Date: 00/00/0000

Geocentric Datum of Australia (GDA2020 / MGA zone 56)



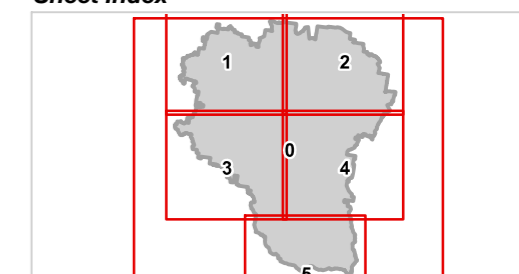
Date: 21/6/2023

Approx Scale @ A3: 1:100,000



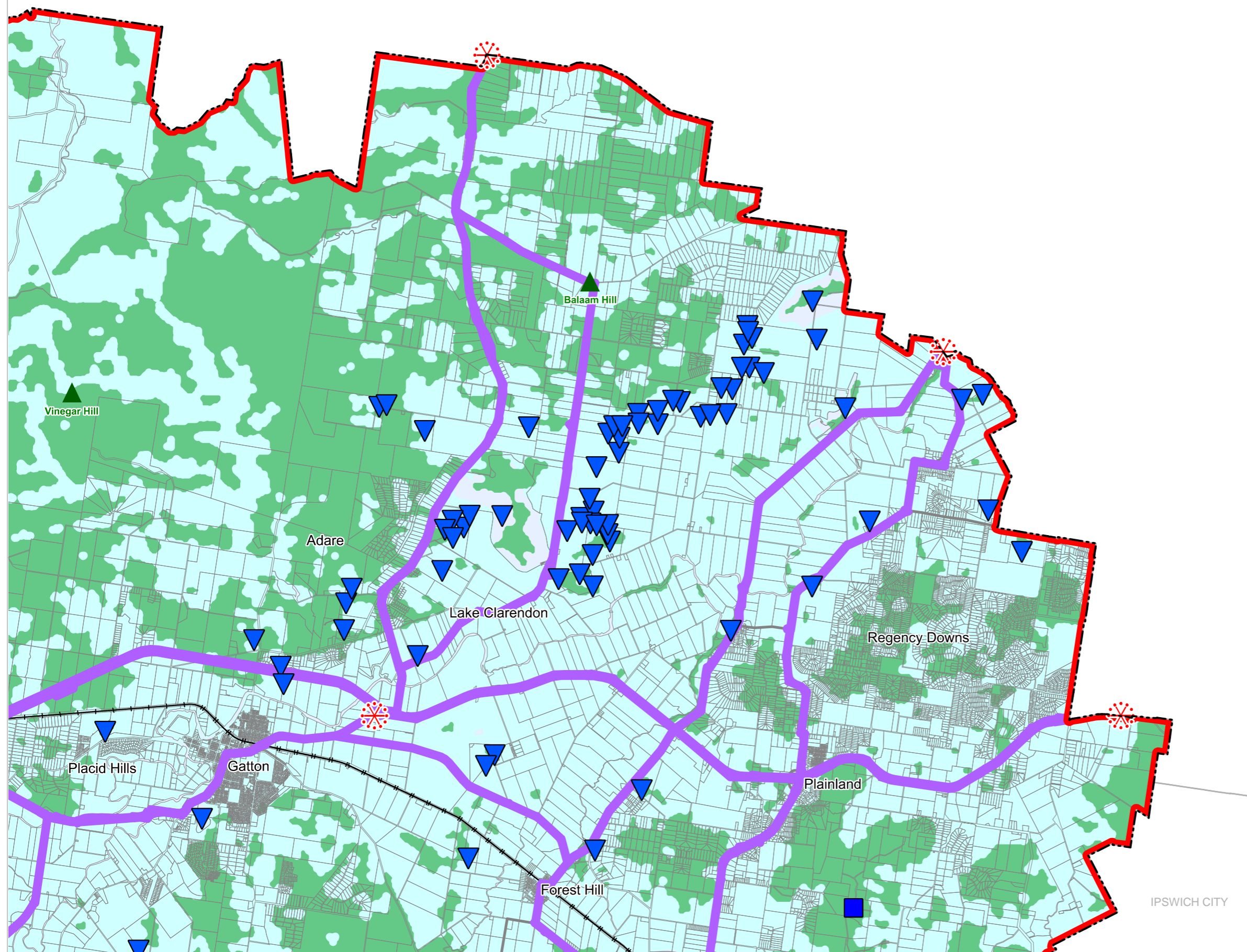
kilometres

Sheet Index



SFM4B Sustaining the natural environment  
LGA north-east-02

SOMERSET REGIONAL



IPSWICH CITY



REGIONAL COUNCIL

SFM4B Strategic Framework -  
Sustaining the natural environment -  
Landscape map

Sustaining the environment

Landscape features

- Scenic landscape area
- Scenic routes and trails
- Lockyer Creek water resource catchment
- Mountain range
- Mountain peak
- Waterbodies and wetlands
- Scenic lookout
- Regional gateway

Cultural heritage parties

- Githabul People (Waringh Waringh)
- Jagera People #2
- Western Wakka Wakka People
- Yuggera Ugarapul People

Other Features

- Major Road
- Railway Network
- Property boundary
- Local government boundary
- Watercourse / Waterbody

NOTE

Refer to online or electronic mapping where layers overlap or labels obstruct the data on the map.

MAP INFORMATION

Based on or contains data sourced from the State Government 2023 which gives no warranty in relation to the data (including accuracy, reliability, completeness or suitability) and accepts no liability (including without limitation, liability in negligence) for any loss, damage or costs (including consequential damage) relating to any use of the data.  
© Copyright Lockyer Valley Regional Council 2023

DATA SOURCES

Cadastral data weekly - whole of State Queensland, Rail network - Queensland, Baseline roads and tracks - Queensland; © State of Queensland (Department of Resources) 2023.

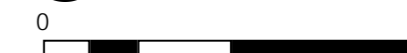
Gazettal Date: 00/00/0000

Geocentric Datum of Australia (GDA2020 / MGA zone 56)

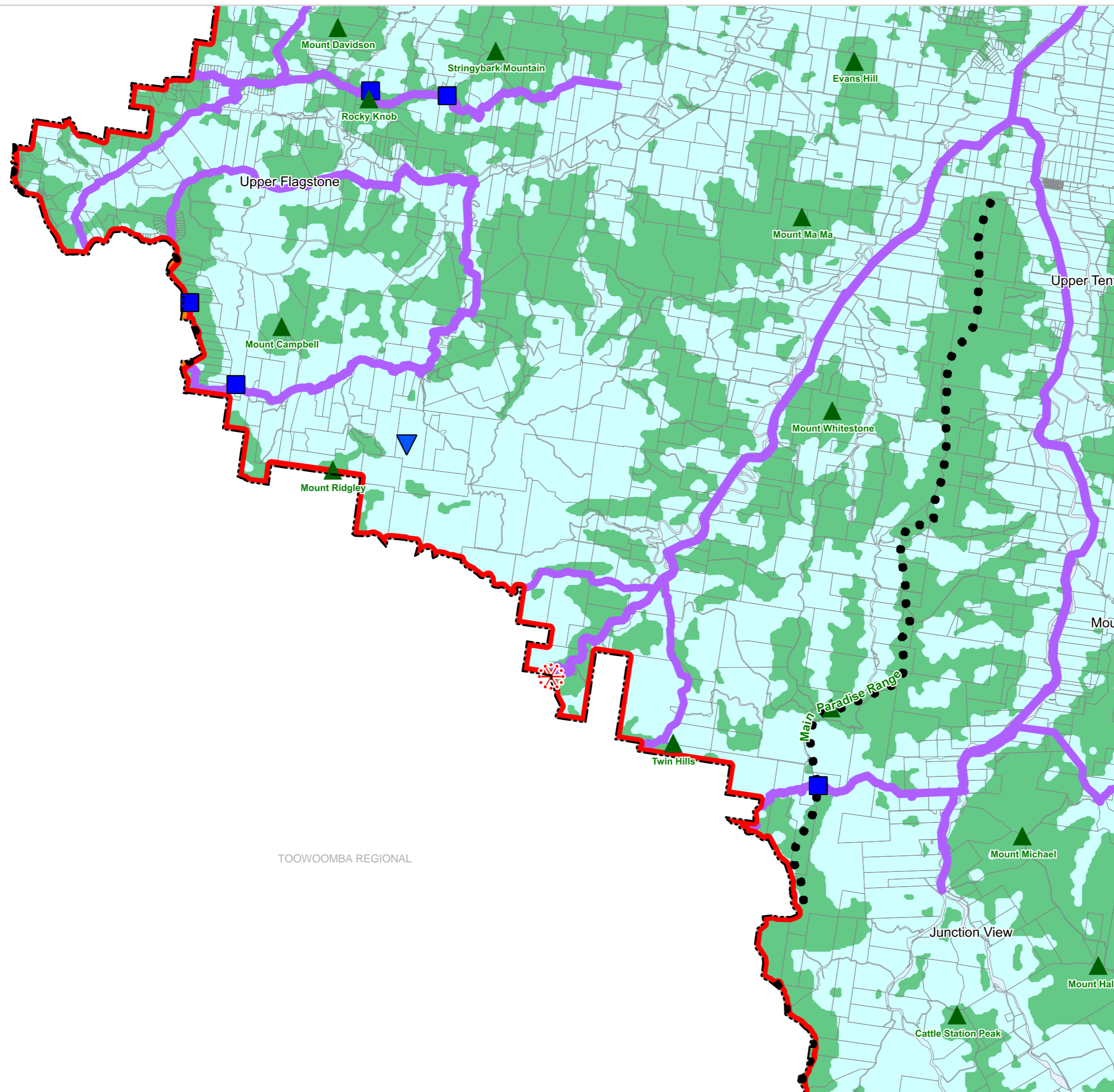
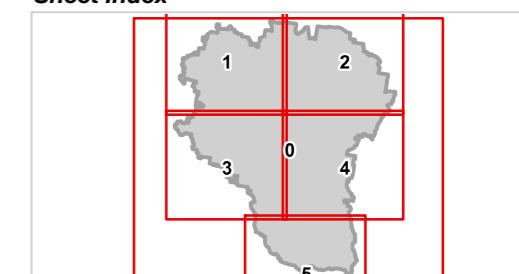


Date: 21/6/2023

Approx Scale @ A3: 1:100,000



Sheet Index



TOOWOOMBA REGIONAL



REGIONAL COUNCIL

SFM4B Strategic Framework -  
Sustaining the natural environment -  
Landscape map

Sustaining the environment

Landscape features

- Scenic landscape area
- Scenic routes and trails
- Lockyer Creek water resource catchment
- Mountain range
- Mountain peak
- Waterbodies and wetlands
- Scenic lookout
- Regional gateway

Cultural heritage parties

- Githabul People (Waringh Waringh)
- Jagera People #2
- Western Wakka Wakka People
- Yuggera Ugarapul People

Other Features

- Major Road
- Railway Network
- Property boundary
- Local government boundary
- Watercourse / Waterbody

NOTE

Refer to online or electronic mapping where layers overlap or labels obstruct the data on the map.

MAP INFORMATION

Based on or contains data sourced from the State Government 2023 which gives no warranty in relation to the data (including accuracy, reliability, completeness or suitability) and accepts no liability (including without limitation, liability in negligence) for any loss, damage or costs (including consequential damage) relating to any use of the data.  
© Copyright Lockyer Valley Regional Council 2023

DATA SOURCES

Cadastral data weekly - whole of State Queensland, Rail network - Queensland, Baseline roads and tracks - Queensland; © State of Queensland (Department of Resources) 2023.

Gazettal Date: 00/00/0000

Geocentric Datum of Australia (GDA2020 / MGA zone 56)



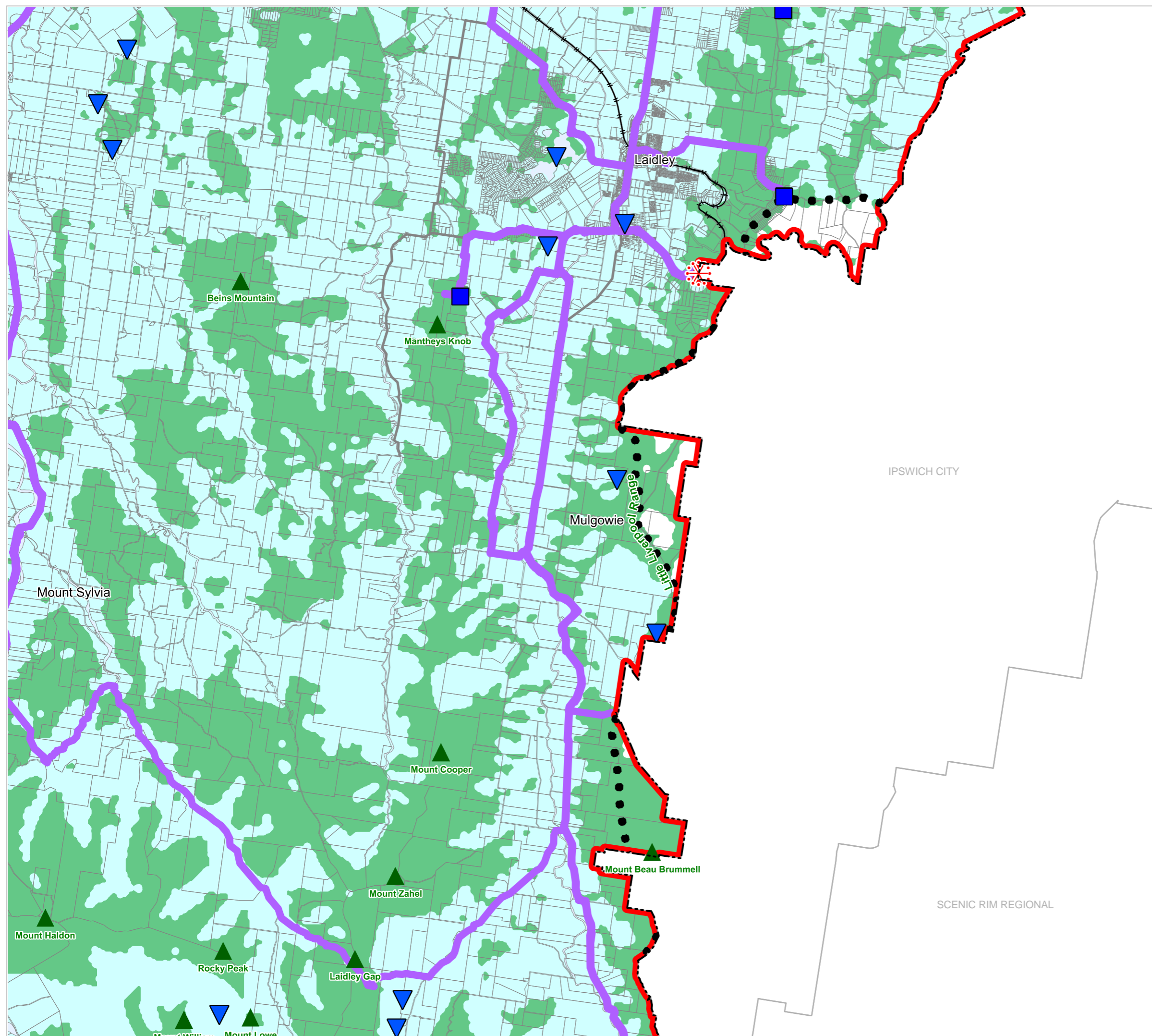
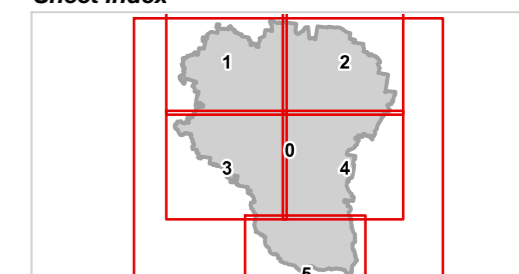
Date: 21/6/2023

Approx Scale @ A3: 1:100,000



kilometres

Sheet Index





# Lockyer Valley Regional Council Draft Planning Scheme

REGIONAL COUNCIL

## SFM4B Strategic Framework - Sustaining the natural environment - Landscape map

### Sustaining the environment

#### Landscape features

- Scenic landscape area
- Scenic routes and trails
- Lockyer Creek water resource catchment
- Mountain range
- Mountain peak
- Waterbodies and wetlands
- Scenic lookout
- Regional gateway

#### Cultural heritage parties

- Githabul People (Waringh Waringh)
- Jagera People #2
- Western Wakka Wakka People
- Yuggera Ugarapul People

#### Other Features

- Major Road
- Railway Network
- Property boundary
- Local government boundary
- Watercourse / Waterbody

#### NOTE

Refer to online or electronic mapping where layers overlap or labels obstruct the data on the map.

#### MAP INFORMATION

Based on or contains data sourced from the State Government 2023 which gives no warranty in relation to the data (including accuracy, reliability, completeness or suitability) and accepts no liability (including without limitation, liability in negligence) for any loss, damage or costs (including consequential damage) relating to any use of the data.  
© Copyright Lockyer Valley Regional Council 2023

#### DATA SOURCES

Cadastral data weekly - whole of State Queensland, Rail network - Queensland, Baseline roads and tracks - Queensland. © State of Queensland (Department of Resources) 2023.

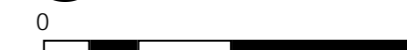
Gazettal Date: 00/00/0000

Geocentric Datum of Australia (GDA2020 / MGA zone 56)

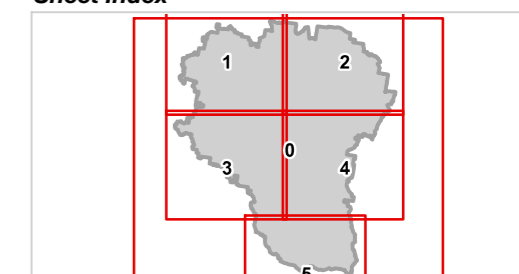


Date: 21/6/2023

Approx Scale @ A3: 1:100,000



#### Sheet Index



**SFM4B Sustaining the natural environment  
LGA south-05**

