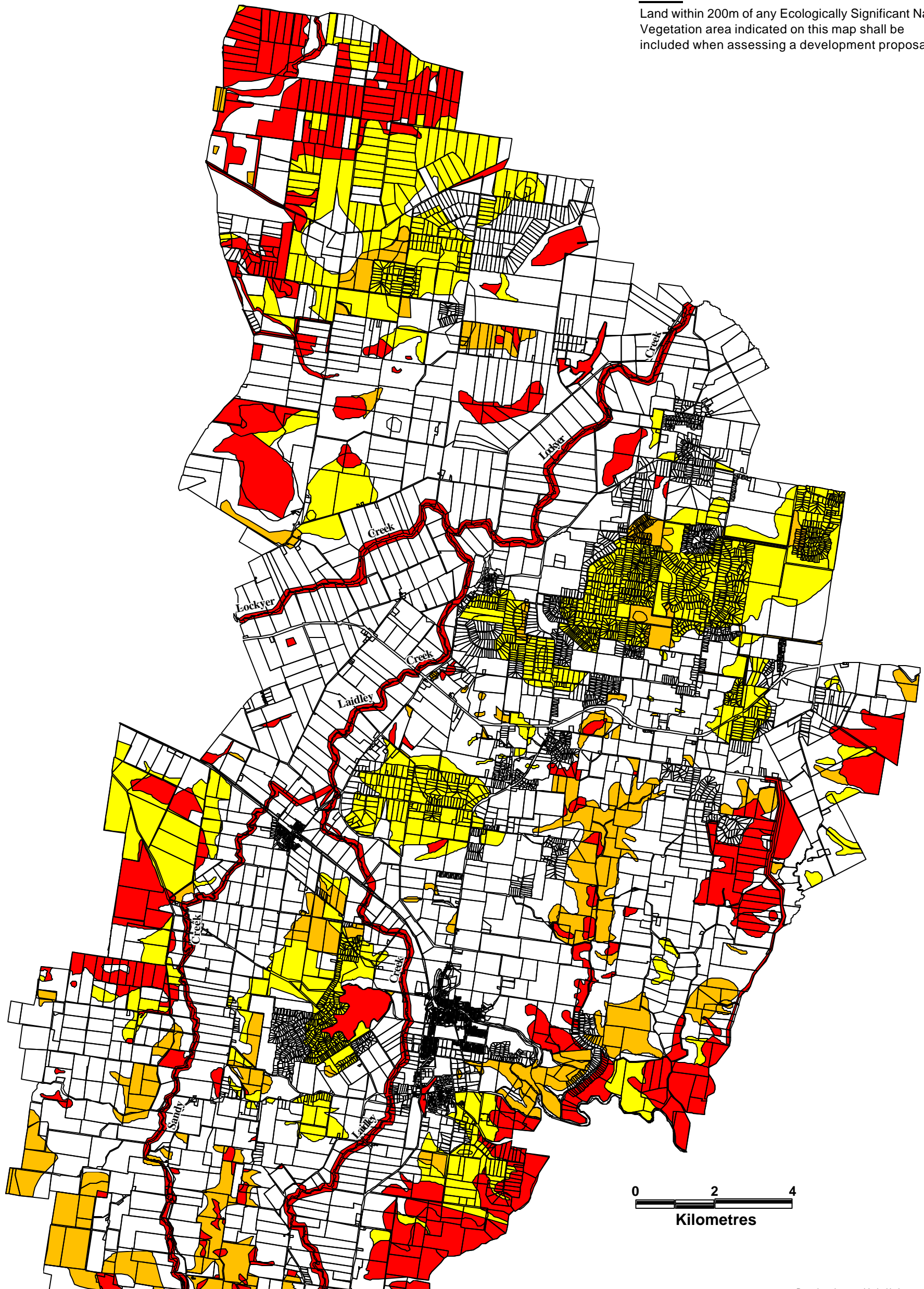
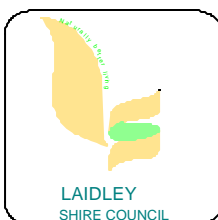


Note:

Land within 200m of any Ecologically Significant Native Vegetation area indicated on this map shall be included when assessing a development proposal.



Based on data provided with the permission of The Department of Natural Resources & Mines [DCDB] (11/01)



- Very High Ecological Significance
- High Ecological Significance
- Moderate Ecological Significance

Laidley Shire Planning Scheme
OVERLAY MAP: AREAS OF NATURAL AND ENVIRONMENTAL SIGNIFICANCE
ECOLOGICALLY SIGNIFICANT NATIVE VEGETATION AREAS

Scale
Revision
Map No. E1