

## Legend

-  Defined Flood Event (DFE)
-  Investigation Area
-  Overland Flow Path
-  Lockyer Valley Regional Council LGA
-  DCDB Parcel Boundaries

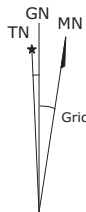
Note: This map represents the regional extent of the defined items. Details are available at lot level. Insets are provided at higher resolution for convenience in key locations. For clarity at this scale, some overland flow path detail has been omitted.

### Limitations:

Note that this mapping is based on Councils ongoing Lockyer Creek Flood Study and Floodplain Risk Management Study and other ongoing studies. It is planned that future admendments will be incorporated in the future updated Lockyer Valley Planning Scheme.



True North, Grid North and Magnetic North are shown diagrammatically for the centre of the Lockyer Valley Local Government Area. Magnetic North is correct for 2012 moving easterly by 0.016° annually.



Grid - Magnetic  
10.558°

### Important

This map was produced on the GEOCENTRIC DATUM OF AUSTRALIA 1994 (GDA94), which has superseded the Australian Geospatial Datum of 1984 (AGD84/84). Heights are referenced to the Australia Height Datum (AHD) heights.

For most practical purposes GDA94 coordinates and satellite derived (GPS) coordinates based on the World Geodetic Datum 1984 (WGS84) are the same.

Queensland Reconstruction Authority



### Important Notice

This information has been prepared for Council's internal purposes and for no other purpose. No statement is made about the accuracy or suitability of the information for use for any purpose (whether the purpose has been notified to Council or not). While every care is taken to ensure the accuracy of this data, neither the Lockyer Valley Regional Council nor the Department of Environment and Resource Management makes any representations or warranties about its accuracy, reliability, completeness or suitability for any particular purpose and disclaims all responsibility and all liability (including without limitation, liability in negligence) for all expenses, losses, damages (including indirect or consequential damage) and costs which you might incur as a result of the data being inaccurate or incomplete in any way or for any reason.

Drawn By :  
Department : Infrastructure Services  
Date : 04-06-2012  
Projection : MGA94 Zone 56  
Size : A3

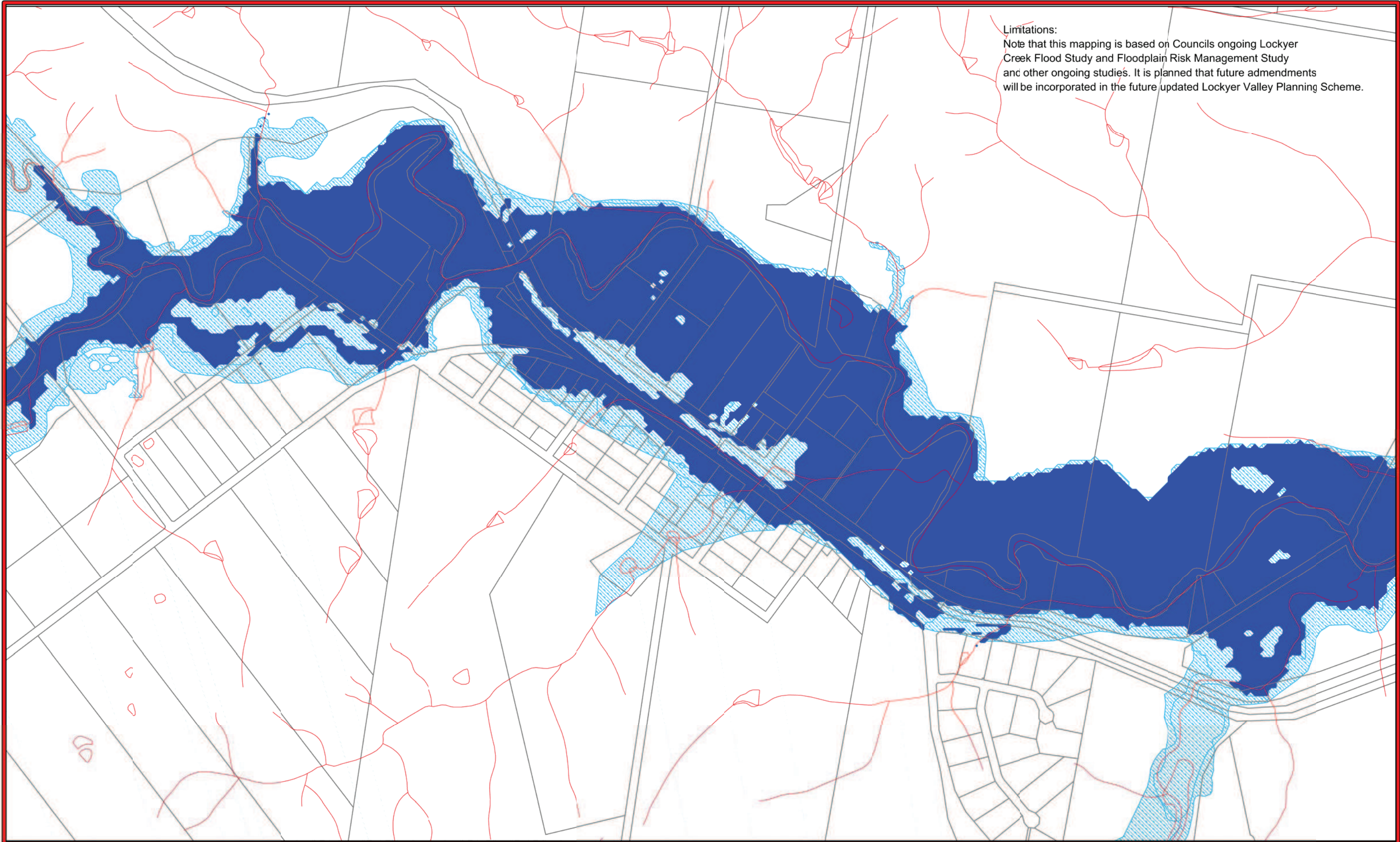
© The State of Queensland (Department of Environment and Resource Management) 2012  
© Lockyer Valley Regional Council 2012.

## Temporary Local Planning Instrument (TLPI)

### MAP F1

LOCKYER VALLEY REGIONAL COUNCIL

PO Box 82 Railway Street, Gatton Q 4343 Phone 1300 005 872 Fax 5462 3269



**Limitations:**  
 Note that this mapping is based on Councils ongoing Lockyer Creek Flood Study and Floodplain Risk Management Study and other ongoing studies. It is planned that future amendments will be incorporated in the future updated Lockyer Valley Planning Scheme.

**GDA**  
**Important**  
 True North, Grid North and Magnetic North are shown diagrammatically for the centre of the Lockyer Valley Local Government Area. Magnetic North is correct for 2012 moving easterly by 0.016° annually.

Grid - Magnetic 10.558°

This map was produced on the GEOCENTRIC DATUM OF AUSTRALIA 1994 (GDA94), which has superseded the Australian Geodesic Datum of 1984 (AGD84). Heights are referenced to the Australia Height Datum (AHD) heights.

For most practical purposes GDA94 coordinates and satellite derived (GPS) coordinates based on the World Geodetic Datum 1984 (WGS84) are the same.



**Lockyer Valley**

**Important Notice**  
 This information has been prepared for Council's internal purposes and for no other purpose. No statement is made about the accuracy or suitability of the information for use for any purpose (whether the purpose has been notified to Council or not). While every care is taken to ensure the accuracy of this data, neither the Lockyer Valley Regional Council nor the Department of Environment and Resource Management makes any representations or warranties about its accuracy, reliability, completeness or suitability for any particular purpose and disclaims all responsibility and all liability (including without limitation, liability in negligence) for all expenses, losses, damages (including indirect or consequential damage) and costs which you might incur as a result of the data being inaccurate or incomplete in any way or for any reason.

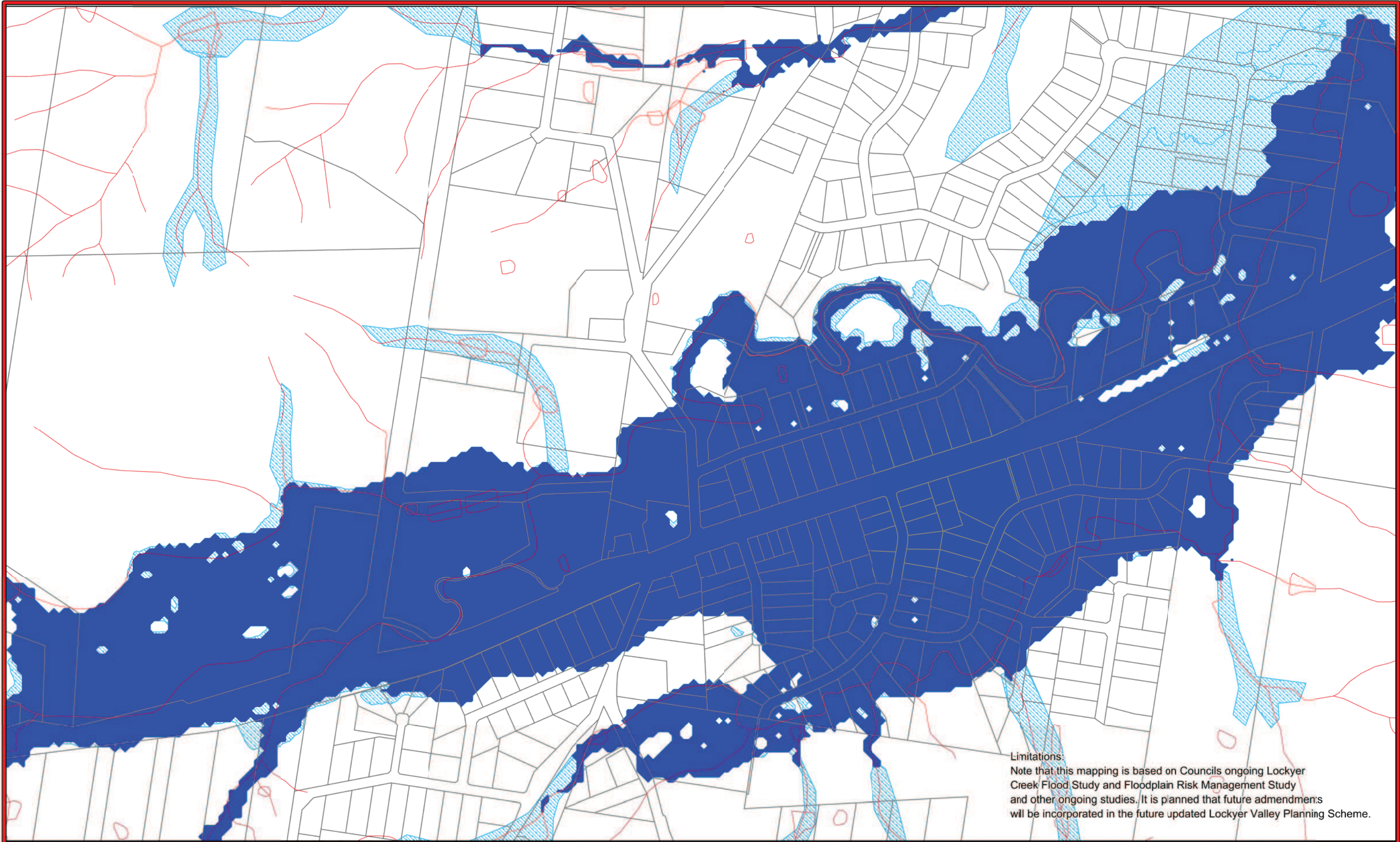
Drawn By :  
 Department : Infrastructure Services  
 Date : 04-06-2012  
 Projection : MGA94 Zone 56  
 Size : A3

© The State of Queensland (Department of Environment and Resource Management) 2012  
 © Lockyer Valley Regional Council 2012

**Temporary Local Planning Instrument (TLPI)**

**MAP F1-A (Murphys Creek)**

**LOCKYER VALLEY REGIONAL COUNCIL**  
 PO Box 82 Railway Street, Gatton Q 4343 Phone 1300005 872 Fax 5462 3269

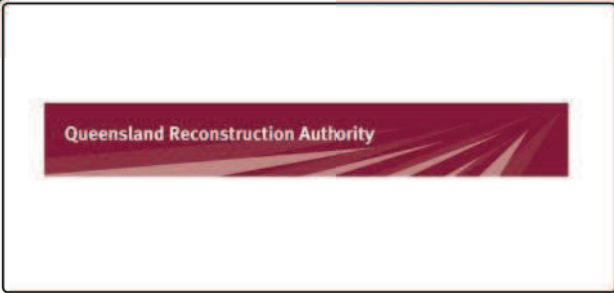


**Limitations:**  
 Note that this mapping is based on Councils ongoing Lockyer Creek Flood Study and Floodplain Risk Management Study and other ongoing studies. It is planned that future amendments will be incorporated in the future updated Lockyer Valley Planning Scheme.

**GDA**  
**Important**  
 True North, Grid North and Magnetic North are shown diagrammatically for the centre of the Lockyer Valley Local Government Area. Magnetic North is correct for 2012 moving easterly by 0.016° annually.

Grid - Magnetic 10.558°

This map was produced on the GEOCENTRIC DATUM OF AUSTRALIA 1994 (GDA94), which has superseded the Australian Geodesic Datum of 1984 (AGD84). Heights are referenced to the Australia Height Datum (AHD) heights.  
 For most practical purposes GDA94 coordinates and satellite derived (GPS) coordinates based on the World Geodetic Datum 1984 (WGS84) are the same.



**Important Notice**  
 This information has been prepared for Council's internal purposes and for no other purpose. No statement is made about the accuracy or suitability of the information for use for any purpose (whether the purpose has been notified to Council or not). While every care is taken to ensure the accuracy of this data, neither the Lockyer Valley Regional Council nor the Department of Environment and Resource Management makes any representations or warranties about its accuracy, reliability, completeness or suitability for any particular purpose and disclaims all responsibility and all liability (including without limitation, liability in negligence) for all expenses, losses, damages (including indirect or consequential damage) and costs which you might incur as a result of the data being inaccurate or incomplete in any way or for any reason.

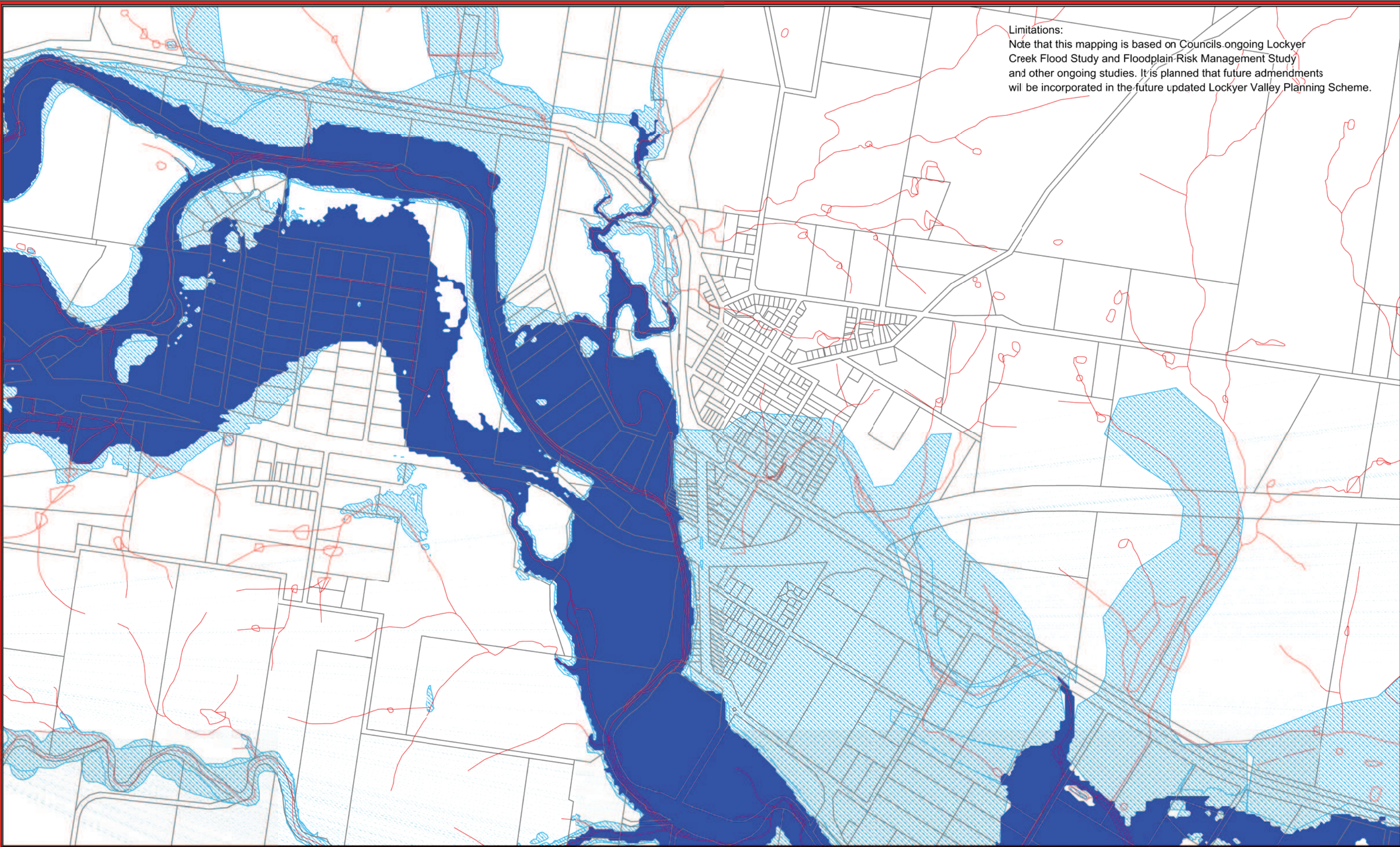
Drawn By:  
 Department: Infrastructure Services  
 Date: 04-06-2012  
 Projection: MGA94 Zone 56  
 Size: A3

© The State of Queensland (Department of Environment and Resource Management) 2012  
 © Lockyer Valley Regional Council 2012

**Temporary Local Planning Instrument (TLPI)**

**MAP F1-B (Withcott)**

**LOCKYER VALLEY REGIONAL COUNCIL**  
 PO Box 82 Railway Street, Gatton Q 4343 Phone 1300005 872 Fax 5462 3269

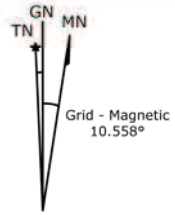


**Limitations:**  
 Note that this mapping is based on Councils ongoing Lockyer Creek Flood Study and Floodplain-Risk Management Study and other ongoing studies. It is planned that future admendments will be incorporated in the future updated Lockyer Valley Planning Scheme.

**GDA**  
**Important**  
 True North, Grid North and Magnetic North are shown diagrammatically for the centre of the Lockyer Valley Local Government Area. Magnetic North is correct for 2012 moving easterly by 0.016° annually.

**Important**  
 This map was produced on the GEOCENTRIC DATUM OF AUSTRALIA 1994 (GDA94), which has superseded the Australian Geospatial Datum of 1984 (AGD84). Heights are referenced to the Australia Height Datum (AHD) heights.

For most practical purposes GDA94 coordinates and satellite derived (GPS) coordinates based on the World Geodetic Datum 1984 (WGS84) are the same.



**Lockyer Valley**

**Important Notice**  
 This information has been prepared for Council's internal purposes and for no other purpose. No statement is made about the accuracy or suitability of the information for use for any purpose (whether the purpose has been notified to Council or not). While every care is taken to ensure the accuracy of this data, neither the Lockyer Valley Regional Council nor the Department of Environment and Resource Management makes any representations or warranties about its accuracy, reliability, completeness or suitability for any particular purpose and disclaims all responsibility and all liability (including without limitation, liability in negligence) for all expenses, losses, damages (including indirect or consequential damage) and costs which you might incur as a result of the data being inaccurate or incomplete in any way or for any reason.

**Drawn By:** Infrastructure Services  
**Date:** 04-06-2012  
**Projection:** MGA94 Zone 56  
**Size:** A3

© The State of Queensland (Department of Environment and Resource Management) 2012  
 © Lockyer Valley Regional Council 2012

**Temporary Local Planning Instrument (TLPI)**

**MAP F1-C (Helidon)**

**LOCKYER VALLEY REGIONAL COUNCIL**  
 PO Box 82 Railway Street, Gatton Q 4343 Phone 1300005 872 Fax 5462 3269



**Limitations:**  
 Note that this mapping is based on Councils ongoing Lockyer Creek Flood Study and Floodplain Risk Management Study and other ongoing studies. It is planned that future admendments will be incorporated in the future updated Lockyer Valley Planning Scheme.

**GDA**  
 True North, Grid North and Magnetic North are shown diagrammatically for the centre of the Lockyer Valley Local Government Area. Magnetic North is correct for 2012 moving easterly by 0.016° annually.

**Important**  
 This map was produced on the GEOCENTRIC DATUM OF AUSTRALIA 1994 (GDA94), which has superseded the Australian Geospatial Datum of 1984 (AGD84). Heights are referenced to the Australia Height Datum (AHD) heights.

For most practical purposes GDA94 coordinates and satellite derived (GPS) coordinates based on the World Geodetic Datum 1984 (WGS84) are the same.

Grid - Magnetic 10.558°



**Lockyer Valley**

**Important Notice**  
 This information has been prepared for Council's internal purposes and for no other purpose. No statement is made about the accuracy or suitability of the information for use for any purpose (whether the purpose has been notified to Council or not). While every care is taken to ensure the accuracy of this data, neither the Lockyer Valley Regional Council nor the Department of Environment and Resource Management makes any representations or warranties about its accuracy, reliability, completeness or suitability for any particular purpose and disclaims all responsibility and all liability (including without limitation, liability in negligence) for all expenses, losses, damages (including indirect or consequential damage) and costs which you might incur as a result of the data being inaccurate or incomplete in any way or for any reason.

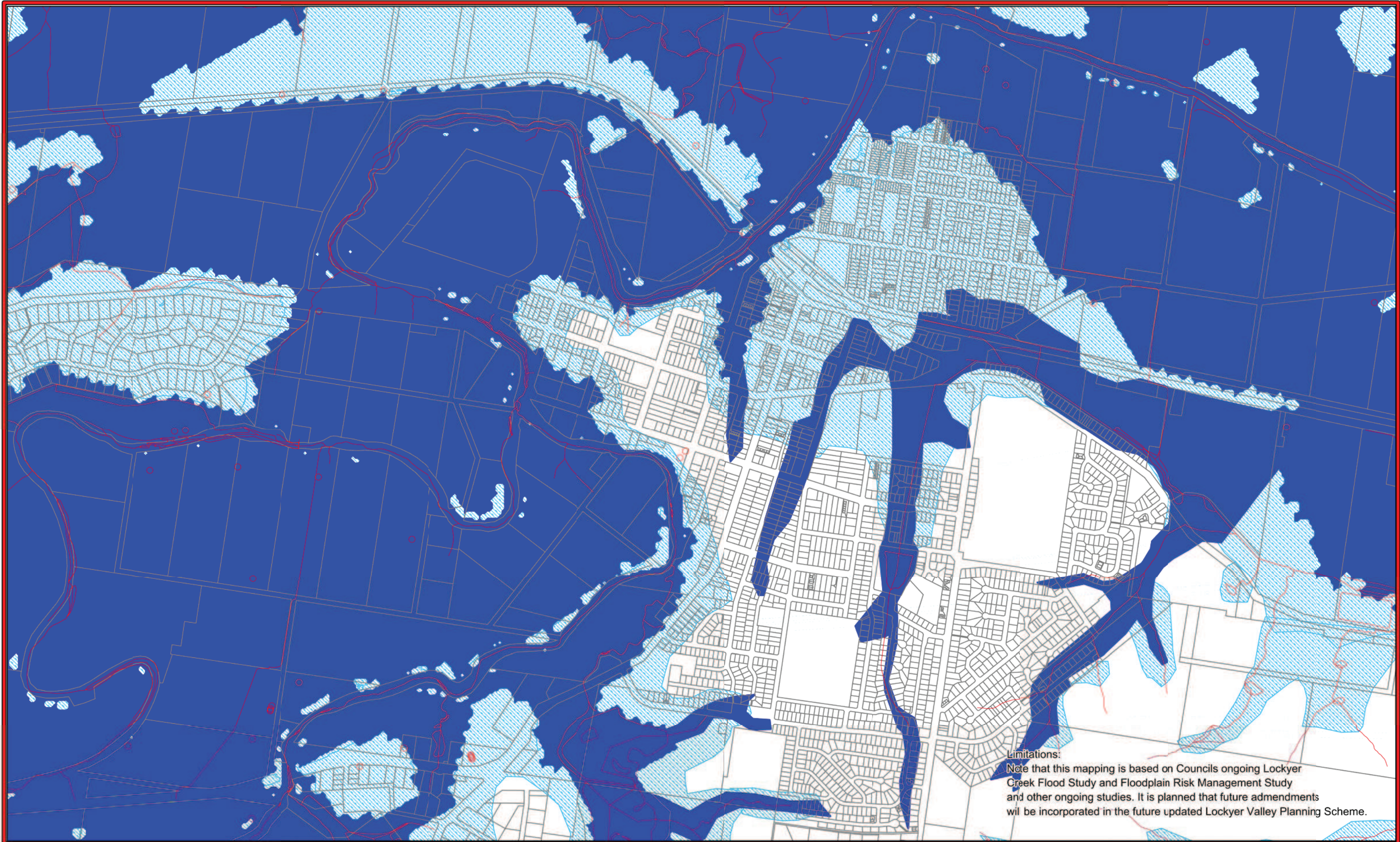
Drawn By: Infrastructure Services  
 Date: 04-06-2012  
 Projection: MGA94 Zone 56  
 Size: A3

© The State of Queensland (Department of Environment and Resource Management) 2012  
 © Lockyer Valley Regional Council 2012.

**Temporary Local Planning Instrument (TLPI)**

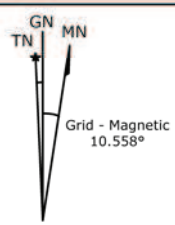
**MAP F1-D (Grantham)**

**LOCKYER VALLEY REGIONAL COUNCIL**  
 PO Box 82 Railway Street, Gatton Q 4343 Phone 1300005 872 Fax 5462 3269



**Limitations:**  
 Note that this mapping is based on Councils ongoing Lockyer Creek Flood Study and Floodplain Risk Management Study and other ongoing studies. It is planned that future amendments will be incorporated in the future updated Lockyer Valley Planning Scheme.

**GDA**  
**Important**  
 True North, Grid North and Magnetic North are shown diagrammatically for the centre of the Lockyer Valley Local Government Area. Magnetic North is correct for 2012 moving easterly by 0.016° annually.  
 This map was produced on the GEOCENTRIC DATUM OF AUSTRALIA 1994 (GDA94), which has superseded the Australian Geodetic Datum of 1984 (AGD84). Heights are referenced to the Australia Height Datum (AHD) heights.  
 For most practical purposes GDA94 coordinates and satellite derived (GPS) coordinates based on the World Geodetic Datum 1984 (WGS84) are the same.



Queensland Reconstruction Authority

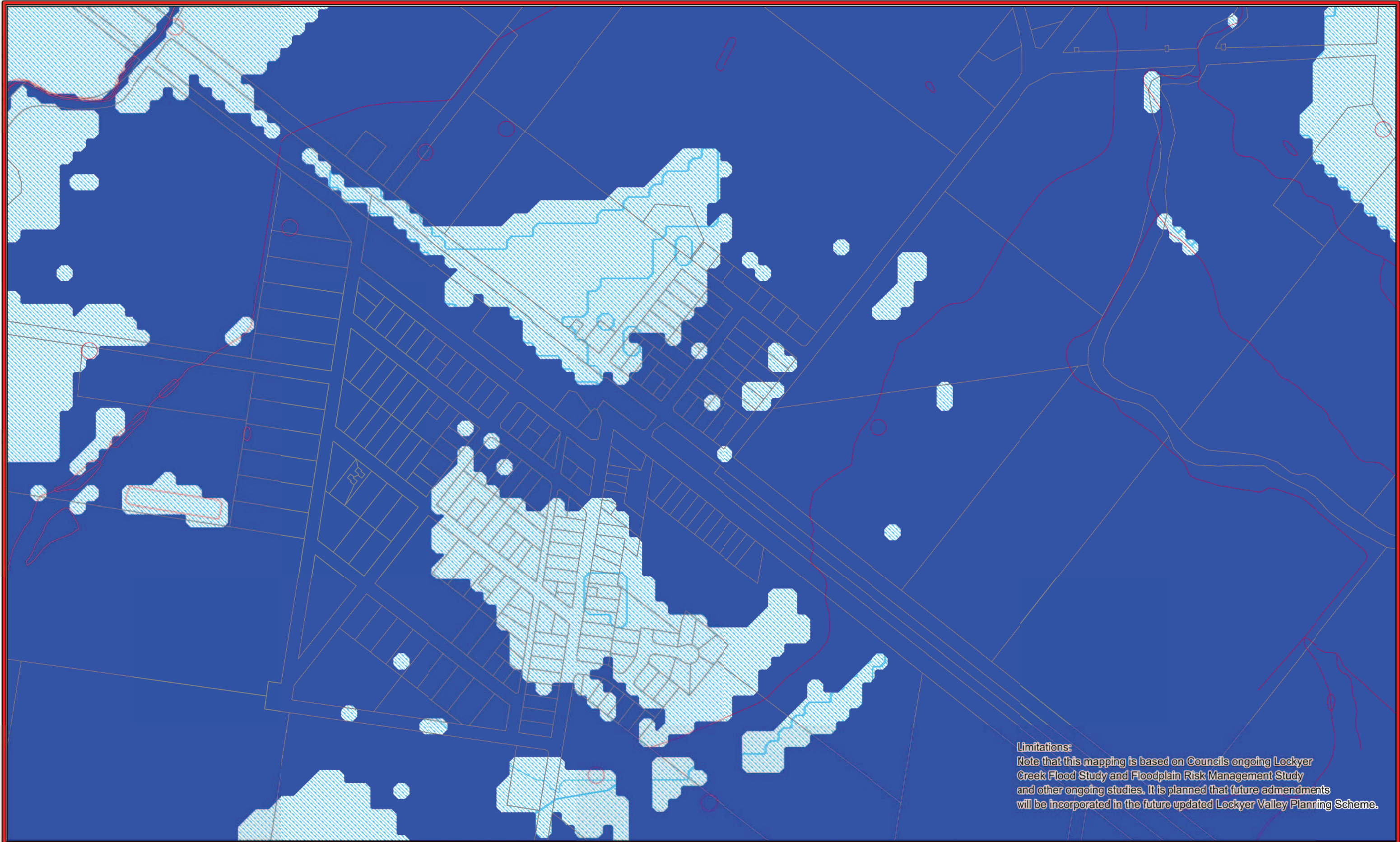


**Important Notice**  
 This information has been prepared for Council's internal purposes and for no other purpose. No statement is made about the accuracy or suitability of the information for use for any purpose (whether the purpose has been notified to Council or not). While every care is taken to ensure the accuracy of this data, neither the Lockyer Valley Regional Council nor the Department of Environment and Resource Management makes any representations or warranties about its accuracy, reliability, completeness or suitability for any particular purpose and disclaims all responsibility and all liability (including without limitation, liability in negligence) for all expenses, losses, damages (including indirect or consequential damage) and costs which you might incur as a result of the data being inaccurate or incomplete in any way or for any reason.  
 Drawn By: Infrastructure Services  
 Date: 04-06-2012  
 Projection: MGA94 Zone 56  
 Size: A3  
 © The State of Queensland (Department of Environment and Resource Management) 2012  
 © Lockyer Valley Regional Council 2012.

**Temporary Local Planning Instrument (TLPI)**

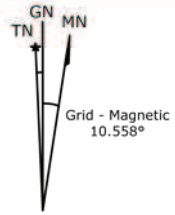
**MAP F1-E (Gatton)**

**LOCKYER VALLEY REGIONAL COUNCIL**  
 PO Box 82 Railway Street, Gatton Q 4343 Phone 1300005 872 Fax 5462 3269



**Limitations:**  
 Note that this mapping is based on Councils ongoing Lockyer Creek Flood Study and Floodplain Risk Management Study and other ongoing studies. It is planned that future amendments will be incorporated in the future updated Lockyer Valley Planning Scheme.

**GDA**  
 Important  
 True North, Grid North and Magnetic North are shown diagrammatically for the centre of the Lockyer Valley Local Government Area. Magnetic North is correct for 2012 moving easterly by 0.016° annually.  
 This map was produced on the GEOCENTRIC DATUM OF AUSTRALIA 1994 (GDA94), which has superseded the Australian Geospatial Datum of 1984 (AGD84). Heights are referenced to the Australia Height Datum (AHD) heights.  
 For most practical purposes GDA94 coordinates and satellite derived (GPS) coordinates based on the World Geodetic Datum 1984 (WGS84) are the same.



Queensland Reconstruction Authority

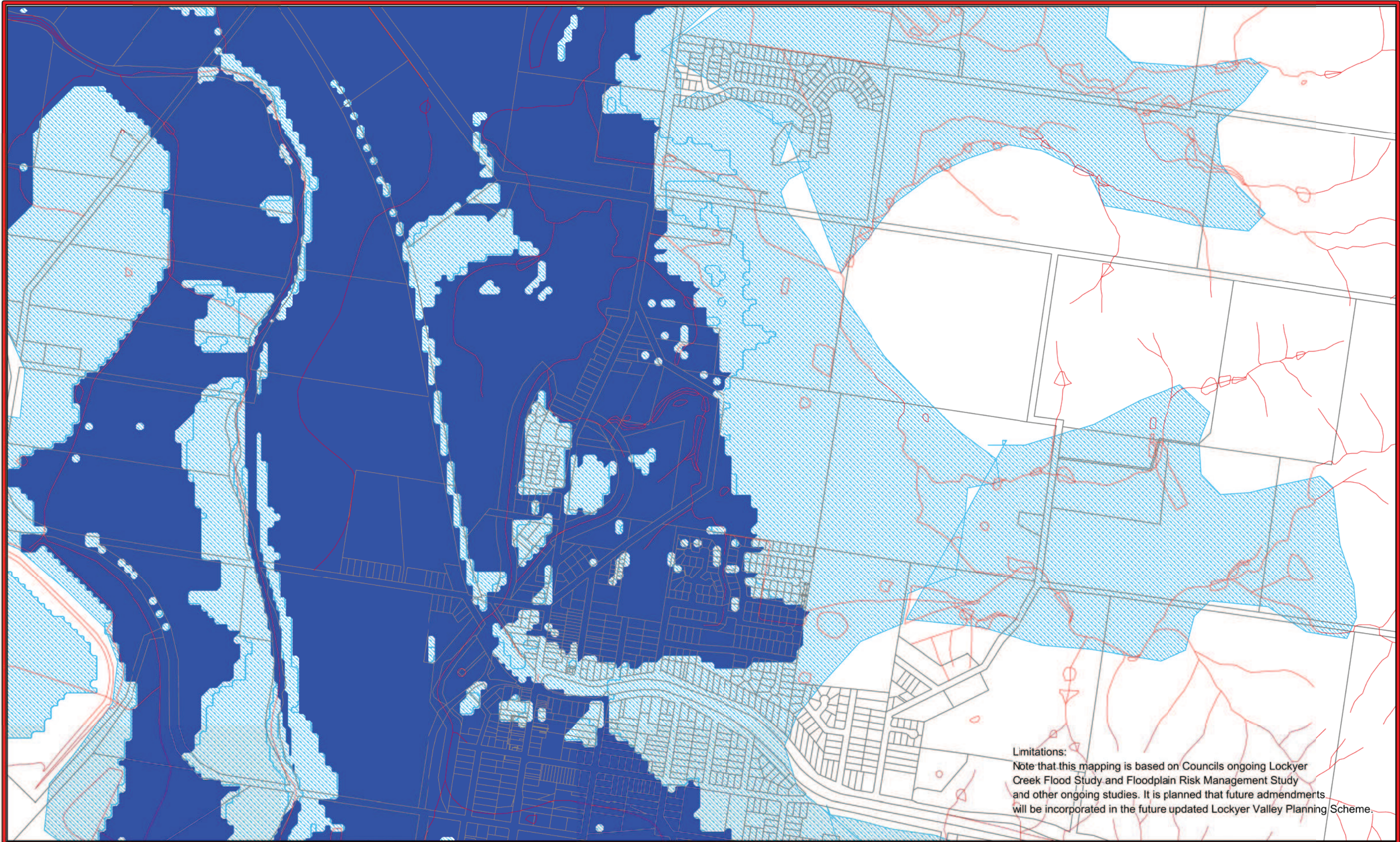


**Important Notice**  
 This information has been prepared for Council's internal purposes and for no other purpose. No statement is made about the accuracy or suitability of the information for use for any purpose (whether the purpose has been notified to Council or not). While every care is taken to ensure the accuracy of this data, neither the Lockyer Valley Regional Council nor the Department of Environment and Resource Management makes any representations or warranties about its accuracy, reliability, completeness or suitability for any particular purpose and disclaims all responsibility and all liability (including without limitation, liability in negligence) for all expenses, losses, damages (including indirect or consequential damage) and costs which you might incur as a result of the data being inaccurate or incomplete in any way or for any reason.  
 Drawn By: Infrastructure Services  
 Date: 04-06-2012  
 Projection: MGA94 Zone 56  
 Size: A3  
 © The State of Queensland (Department of Environment and Resource Management) 2012  
 © Lockyer Valley Regional Council 2012

**Temporary Local Planning Instrument (TLPI)**

**MAP F1-F (Forest Hill)**

**LOCKYER VALLEY REGIONAL COUNCIL**  
 PO Box 82 Railway Street, Gatton Q 4343 Phone 1300005 872 Fax 5462 3269



**Limitations:**  
 Note that this mapping is based on Councils ongoing Lockyer Creek Flood Study and Floodplain Risk Management Study and other ongoing studies. It is planned that future admendments will be incorporated in the future updated Lockyer Valley Planning Scheme.

**GDA**  
**Important**  
 True North, Grid North and Magnetic North are shown diagrammatically for the centre of the Lockyer Valley Local Government Area. Magnetic North is correct for 2012 moving easterly by 0.016° annually.

GN  
TN MN  
Grid - Magnetic  
10.558°

This map was produced on the GEOCENTRIC DATUM OF AUSTRALIA 1994 (GDA94), which has superseded the Australian Geospatial Datum of 1984 (AGD84). Heights are referenced to the Australia Height Datum (AHD) heights.

For most practical purposes GDA94 coordinates and satellite derived (GPS) coordinates based on the World Geodetic Datum 1984 (WGS84) are the same.

Queensland Reconstruction Authority

SINCLAIR KNIGHT MERZ

**SKM**

**Lockyer Valley**

**Important Notice**  
 This information has been prepared for Council's internal purposes and for no other purpose. No statement is made about the accuracy or suitability of the information for use for any purpose (whether the purpose has been notified to Council or not). While every care is taken to ensure the accuracy of this data, neither the Lockyer Valley Regional Council nor the Department of Environment and Resource Management makes any representations or warranties about its accuracy, reliability, completeness or suitability for any particular purpose and disclaims all responsibility and all liability (including without limitation, liability in negligence) for all expenses, losses, damages (including indirect or consequential damage) and costs which you might incur as a result of the data being inaccurate or incomplete in any way or for any reason.

Drawn By :  
 Department : Engineering  
 Date : 04-06-2012  
 Projection : MGA94 Zone 56  
 Size : A3

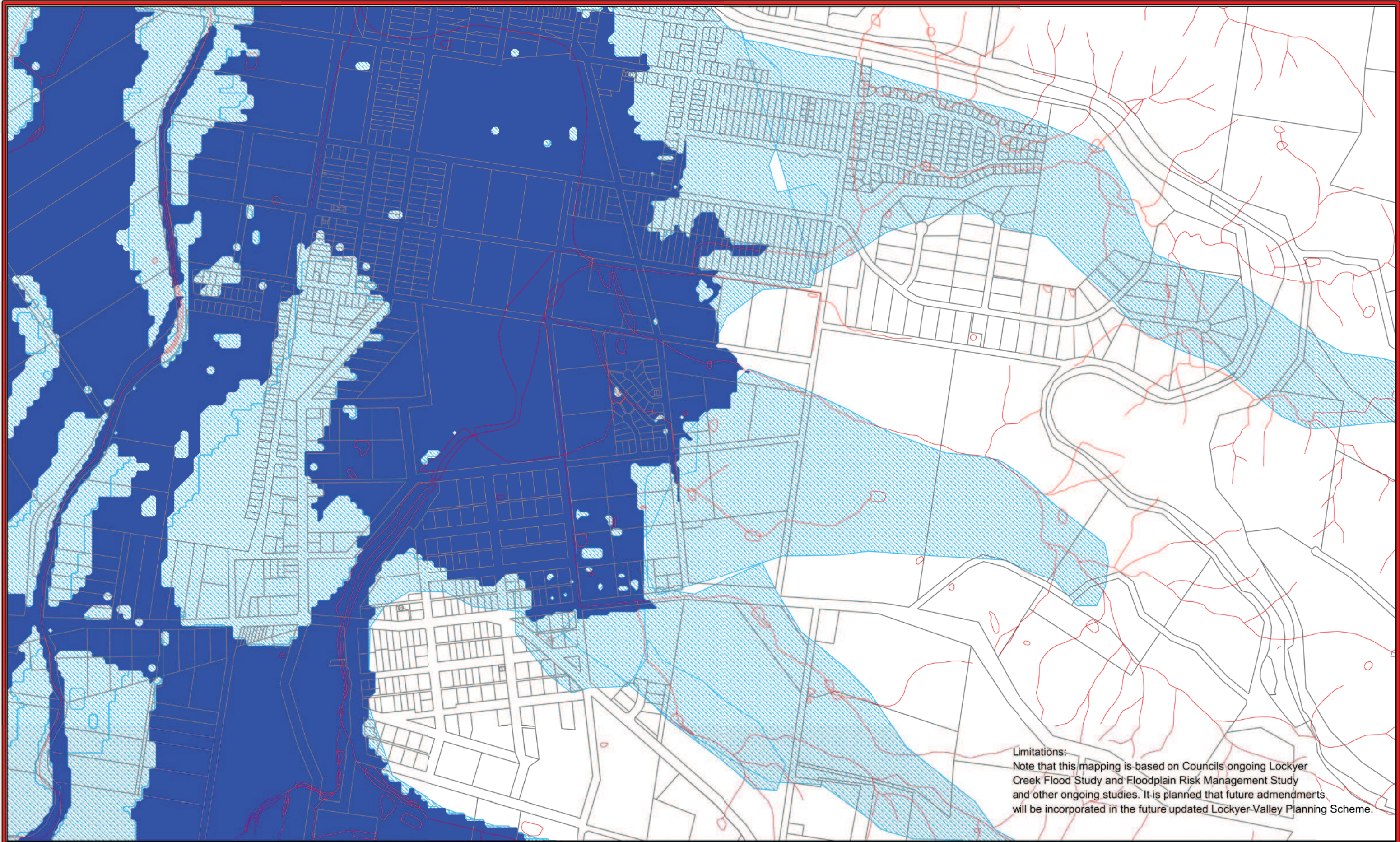
© The State of Queensland (Department of Environment and Resource Management) 2012  
 © Lockyer Valley Regional Council 2012

**Temporary Local  
 Planning Instrument (TLPI)**

**MAP F1-G1  
 (Laidley - North)**

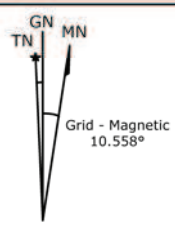
**LOCKYER VALLEY REGIONAL COUNCIL**  
 PO Box 82 Railway Street, Gatton Q 4343 Phone 1300005 872 Fax 5462 3269



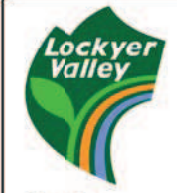


**Limitations:**  
 Note that this mapping is based on Councils ongoing Lockyer Creek Flood Study and Floodplain Risk Management Study and other ongoing studies. It is planned that future admendments will be incorporated in the future updated Lockyer-Valley Planning Scheme.

**GDA**  
 Important  
 True North, Grid North and Magnetic North are shown diagrammatically for the centre of the Lockyer Valley Local Government Area. Magnetic North is correct for 2012 moving easterly by 0.016° annually.  
 This map was produced on the GEOCENTRIC DATUM OF AUSTRALIA 1994 (GDA94), which has superseded the Australian Geospatial Datum of 1984 (AGD84). Heights are referenced to the Australia Height Datum (AHD) heights.  
 For most practical purposes GDA94 coordinates and satellite derived (GPS) coordinates based on the World Geodetic Datum 1984 (WGS84) are the same.



Queensland Reconstruction Authority

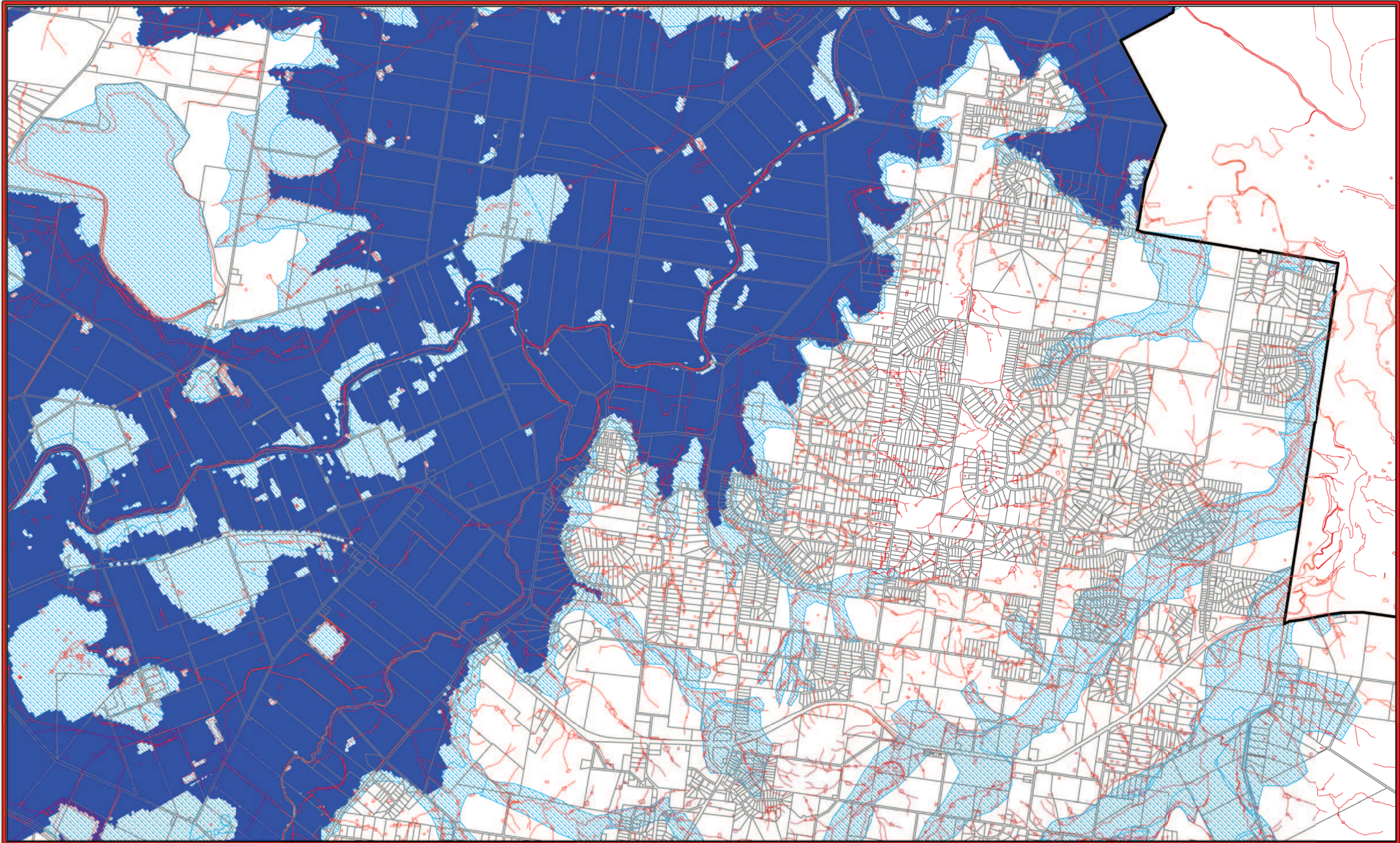


**Important Notice**  
 This information has been prepared for Council's internal purposes and for no other purpose. No statement is made about the accuracy or suitability of the information for use for any purpose (whether the purpose has been notified to Council or not). While every care is taken to ensure the accuracy of this data, neither the Lockyer Valley Regional Council nor the Department of Environment and Resource Management makes any representations or warranties about its accuracy, reliability, completeness or suitability for any particular purpose and disclaims all responsibility and all liability (including without limitation, liability in negligence) for all expenses, losses, damages (including indirect or consequential damage) and costs which you might incur as a result of the data being inaccurate or incomplete in any way or for any reason.  
 Drawn By :  
 Department : Infrastructure Services  
 Date : 04-06-2012  
 Projection : MGA94 Zone 56  
 Size : A3  
 © The State of Queensland (Department of Environment and Resource Management) 2012  
 © Lockyer Valley Regional Council 2012.

**Temporary Local Planning Instrument (TLPI)**

**MAP F1-G2 (Laidley - South)**

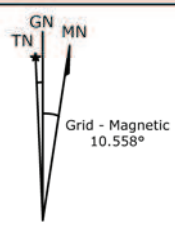
**LOCKYER VALLEY REGIONAL COUNCIL**  
 PO Box 82 Railway Street, Gatton Q 4343 Phone 1300005 872 Fax 5462 3269



**GDA**  
**Important**  
 True North, Grid North and Magnetic North are shown diagrammatically for the centre of the Lockyer Valley Local Government Area. Magnetic North is correct for 2012 moving easterly by 0.016° annually.

This map was produced on the GEOCENTRIC DATUM OF AUSTRALIA 1994 (GDA94), which has superseded the Australian Geodesic Datum of 1984 (AGD84). Heights are referenced to the Australia Height Datum (AHD) heights.

For most practical purposes GDA94 coordinates and satellite derived (GPS) coordinates based on the World Geodetic Datum 1984 (WGS84) are the same.



Queensland Reconstruction Authority

SINCLAIR KNIGHT MERZ  
**SKM**



Drawn By:  
 Department: Infrastructure Services  
 Date: 04-06-2012  
 Projection: MGA94 Zone 56  
 Size: A3

**Important Notice**  
 This information has been prepared for Council's internal purposes and for no other purpose. No statement is made about the accuracy or suitability of the information for use for any purpose (whether the purpose has been notified to Council or not). While every care is taken to ensure the accuracy of this data, neither the Lockyer Valley Regional Council nor the Department of Environment and Resource Management makes any representations or warranties about its accuracy, reliability, completeness or suitability for any particular purpose and disclaims all responsibility and all liability (including without limitation, liability in negligence) for all expenses, losses, damages (including indirect or consequential damage) and costs which you might incur as a result of the data being inaccurate or incomplete in any way or for any reason.

© The State of Queensland (Department of Environment and Resource Management) 2012  
 © Lockyer Valley Regional Council 2012

**Temporary Local Planning Instrument (TLPI)**

**MAP F1-H**  
**(North East Lockyer)**

**LOCKYER VALLEY REGIONAL COUNCIL**  
 PO Box 82 Railway Street, Gatton Q 4343 Phone 1300005 872 Fax 5462 3269