

Legend

- High Hazard
- Medium Hazard
- Low Hazard
- Lockyer Valley Regional Council LGA
- DCDB Parcel boundaries

Limitations:
 Note that this mapping is based on Councils ongoing Lockyer Creek Flood Study and Floodplain Risk Management Study and other ongoing studies. It is planned that future amendments will be incorporated in the future updated Lockyer Valley Planning Scheme.

GDA
 True North, Grid North and Magnetic North are shown diagrammatically for the centre of the Lockyer Valley Local Government Area. Magnetic North is correct for 2012 moving easterly by 0.016° annually.

Important
 This map was produced on the GEOCENTRIC DATUM OF AUSTRALIA 1994 (GDA94), which has superseded the Australian Geodetic Datum of 1984 (AGD84). Heights are referenced to the Australia Height Datum (AHD) heights.

For most practical purposes GDA94 coordinates and satellite derived (GPS) coordinates based on the World Geodetic Datum 1984 (WGS84) are the same.

Queensland Reconstruction Authority

SINCLAIR KNIGHT MERZ

Lockyer Valley

Important Notice
 This information has been prepared for Council's internal purposes and for no other purpose. No statement is made about the accuracy or suitability of the information for use for any purpose (whether the purpose has been notified to Council or not). While every care is taken to ensure the accuracy of this data, neither the Lockyer Valley Regional Council nor the Department of Environment and Resource Management makes any representations or warranties about its accuracy, reliability, completeness or suitability for any particular purpose and disclaims all responsibility and all liability (including without limitation, liability in negligence) for all expenses, losses, damages (including indirect or consequential damage) and costs which you might incur as a result of the data being inaccurate or incomplete in any way or for any reason.

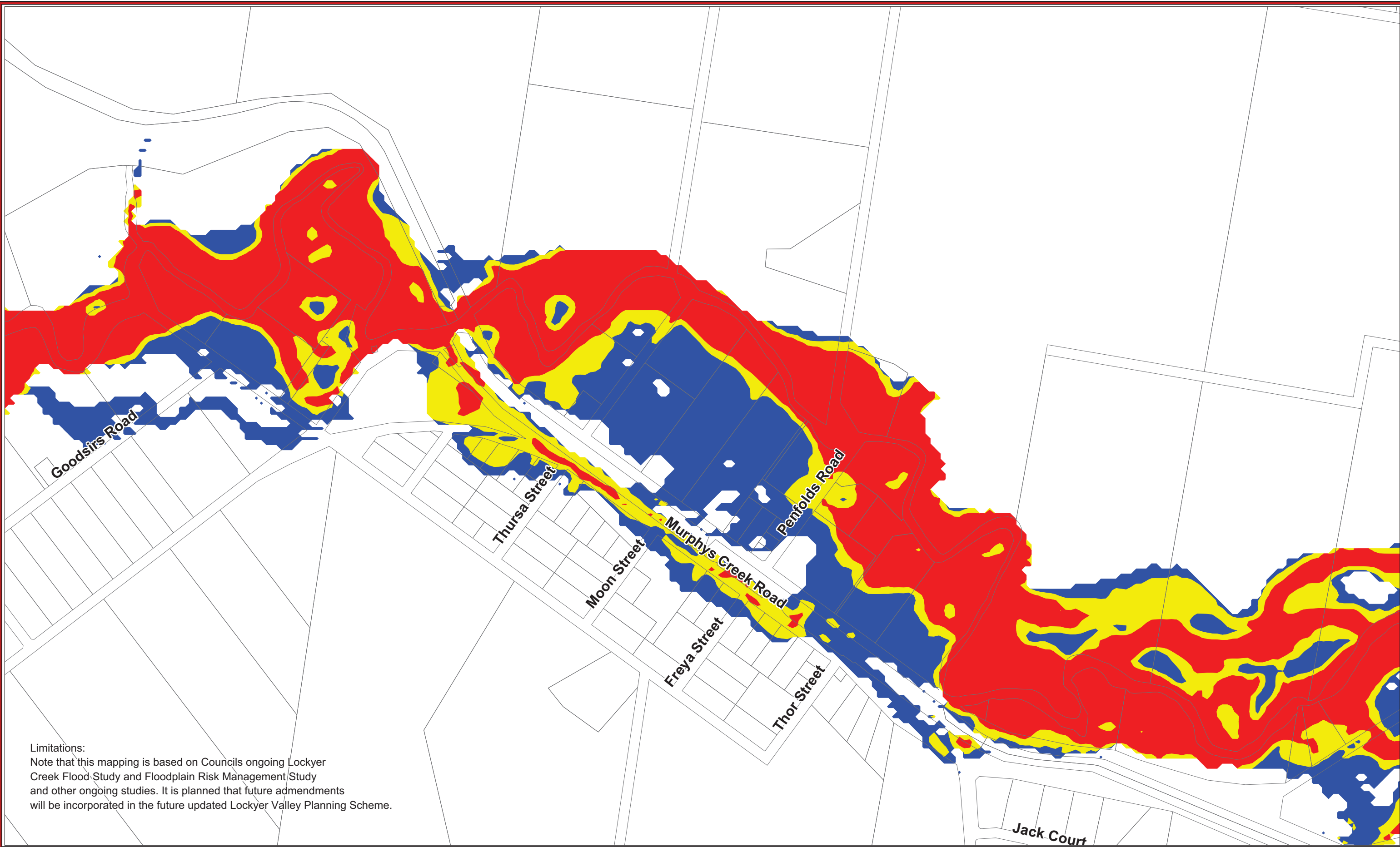
Drawn By: Infrastructure Services
 Date: 08-06-2012
 Projection: MGA94 Zone 56
 Size: A3

© The State of Queensland (Department of Environment and Resource Management) 2012
 © Lockyer Valley Regional Council 2012

Temporary Local Planning Instrument (TLPI)

MAP F2

LOCKYER VALLEY REGIONAL COUNCIL
 PO Box 82 Railway Street, Gatton Q 4343 Phone 1300005 872 Fax 5462 3269



Limitations:
 Note that this mapping is based on Councils ongoing Lockyer Creek Flood Study and Floodplain Risk Management Study and other ongoing studies. It is planned that future amendments will be incorporated in the future updated Lockyer Valley Planning Scheme.

GDA
Important
 This map was produced on the GEOCENTRIC DATUM OF AUSTRALIA 1994 (GDA94), which has superseded the Australian Geospatial Datum of 1984 (AGD66/84). Heights are referenced to the Australia Height Datum (AHD) heights.
 For most practical purposes GDA94 coordinates and satellite derived (GPS) coordinates based on the World Geodetic Datum 1984 (WGS84) are the same.

Grid - Magnetic
 10.558°



Important Notice
 This information has been prepared for Council's internal purposes and for no other purpose. No statement is made about the accuracy or suitability of the information for use for any purpose (whether the purpose has been notified to Council or not). While every care is taken to ensure the accuracy of this data, neither the Lockyer Valley Regional Council nor the Department of Environment and Resource Management makes any representations or warranties about its accuracy, reliability, completeness or suitability for any particular purpose and disclaims all responsibility and all liability (including without limitation, liability in negligence) for all expenses, losses, damages (including indirect or consequential damage) and costs which you might incur as a result of the data being inaccurate or incomplete in any way or for any reason.

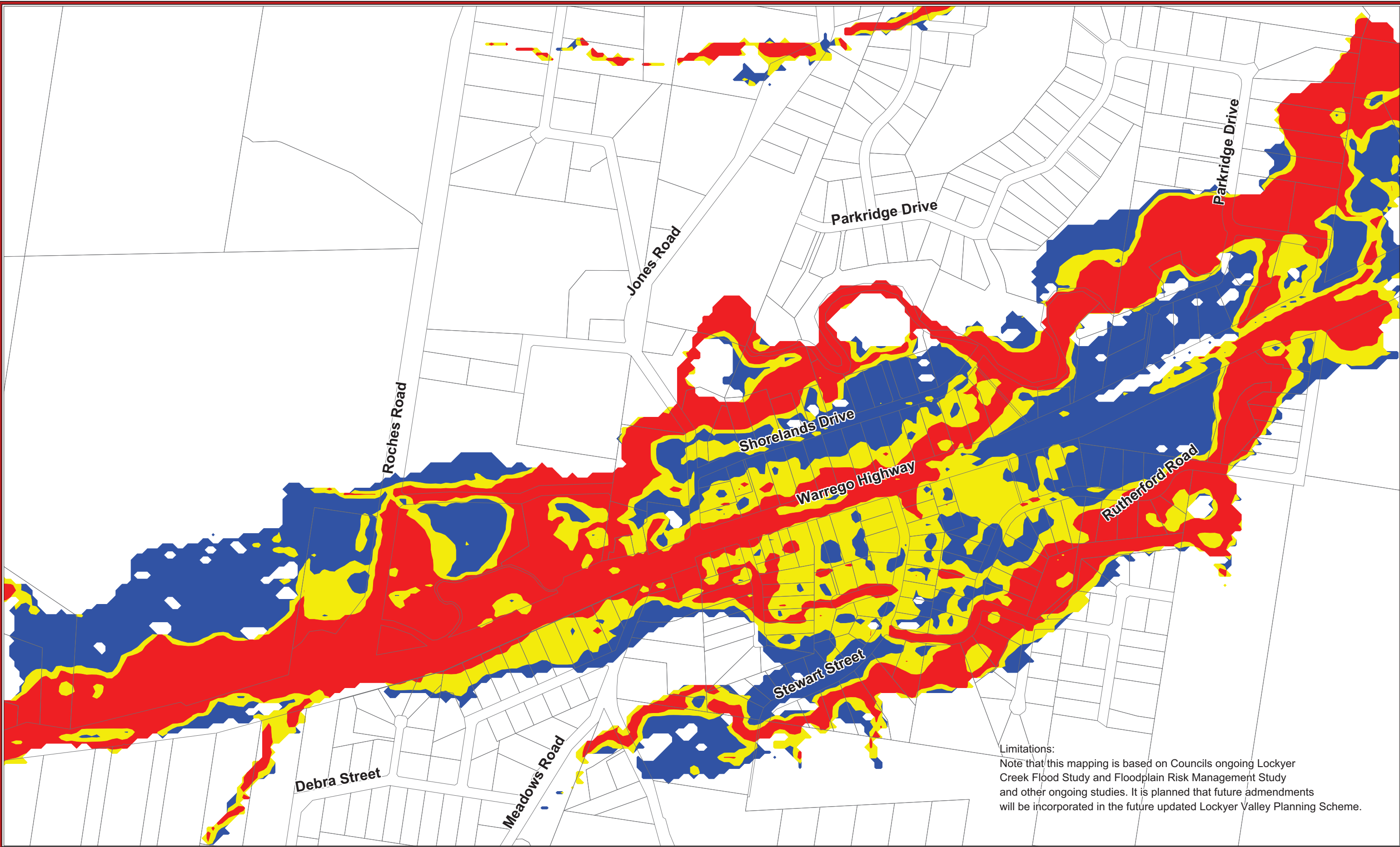
Drawn By : Infrastructure Services
 Date : 08-06-2012
 Projection : MGA94 Zone 56
 Size : A3

© The State of Queensland (Department of Environment and Resource Management) 2012
 © Lockyer Valley Regional Council 2012.

Temporary Local Planning Instrument (TLPI)

MAP F2-A (Murphys Creek)

LOCKYER VALLEY REGIONAL COUNCIL
 PO Box 82 Railway Street, Gatton Q 4343 Phone 1300 005 872 Fax 5462 3269



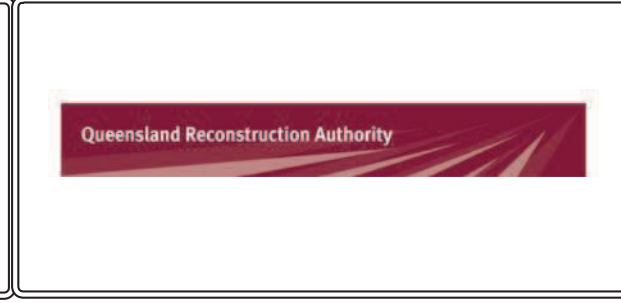
Limitations:
 Note that this mapping is based on Councils ongoing Lockyer Creek Flood Study and Floodplain Risk Management Study and other ongoing studies. It is planned that future admendments will be incorporated in the future updated Lockyer Valley Planning Scheme.

GDA
Important
 True North, Grid North and Magnetic North are shown diagrammatically for the centre of the Lockyer Valley Local Government Area. Magnetic North is correct for 2012 moving easterly by 0.016° annually.

Grid - Magnetic 10.558°

This map was produced on the GEOCENTRIC DATUM OF AUSTRALIA 1994 (GDA94), which has superseded the Australian Geospatial Datum of 1984 (AGD66/84). Heights are referenced to the Australia Height Datum (AHD) heights.

For most practical purposes GDA94 coordinates and satellite derived (GPS) coordinates based on the World Geodetic Datum 1984 (WGS84) are the same.



Lockyer Valley

Important Notice
 This information has been prepared for Council's internal purposes and for no other purpose. No statement is made about the accuracy or suitability of the information for use for any purpose (whether the purpose has been notified to Council or not). While every care is taken to ensure the accuracy of this data, neither the Lockyer Valley Regional Council nor the Department of Environment and Resource Management makes any representations or warranties about its accuracy, reliability, completeness or suitability for any particular purpose and disclaims all responsibility and all liability (including without limitation, liability in negligence) for all expenses, losses, damages (including indirect or consequential damage) and costs which you might incur as a result of the data being inaccurate or incomplete in any way or for any reason.

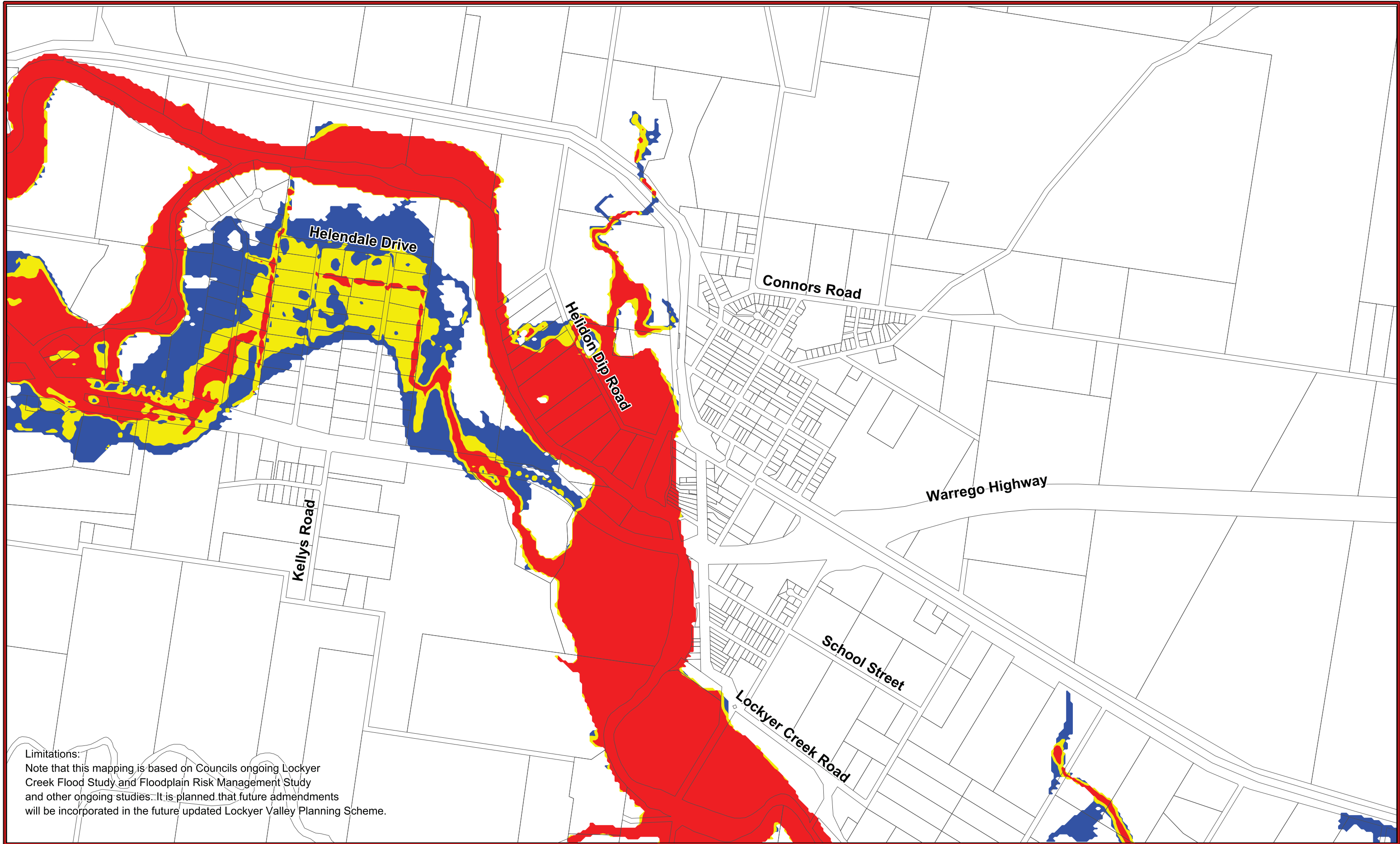
Drawn By :
 Department : Infrastructure Services
 Date : 08-06-2012
 Projection : MGA94 Zone 56
 Size : A3

© The State of Queensland (Department of Environment and Resource Management) 2012
 © Lockyer Valley Regional Council 2012.

Temporary Local Planning Instrument (TLPI)

MAP F2-B (Withcott)

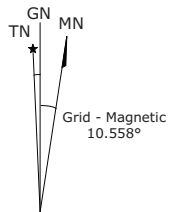
LOCKYER VALLEY REGIONAL COUNCIL
 PO Box 82 Railway Street, Gatton Q 4343 Phone 1300 005 872 Fax 5462 3269



Limitations:
 Note that this mapping is based on Councils ongoing Lockyer Creek Flood Study and Floodplain Risk Management Study and other ongoing studies. It is planned that future admendments will be incorporated in the future updated Lockyer Valley Planning Scheme.

GDA
 Important
 This map was produced on the GEOCENTRIC DATUM OF AUSTRALIA 1994 (GDA94), which has superseded the Australian Geospatial Datum of 1984 (AGD66/84). Heights are referenced to the Australia Height Datum (AHD) heights.

For most practical purposes GDA94 coordinates and satellite derived (GPS) coordinates based on the World Geodetic Datum 1984 (WGS84) are the same.



Drawn By :
 Department : Infrastructure Services
 Date : 08-06-2012
 Projection : MGA94 Zone 56
 Size : A3

Important Notice
 This information has been prepared for Council's internal purposes and for no other purpose. No statement is made about the accuracy or suitability of the information for use for any purpose (whether the purpose has been notified to Council or not). While every care is taken to ensure the accuracy of this data, neither the Lockyer Valley Regional Council nor the Department of Environment and Resource Management makes any representations or warranties about its accuracy, reliability, completeness or suitability for any particular purpose and disclaims all responsibility and all liability (including without limitation, liability in negligence) for all expenses, losses, damages (including indirect or consequential damage) and costs which you might incur as a result of the data being inaccurate or incomplete in any way or for any reason.

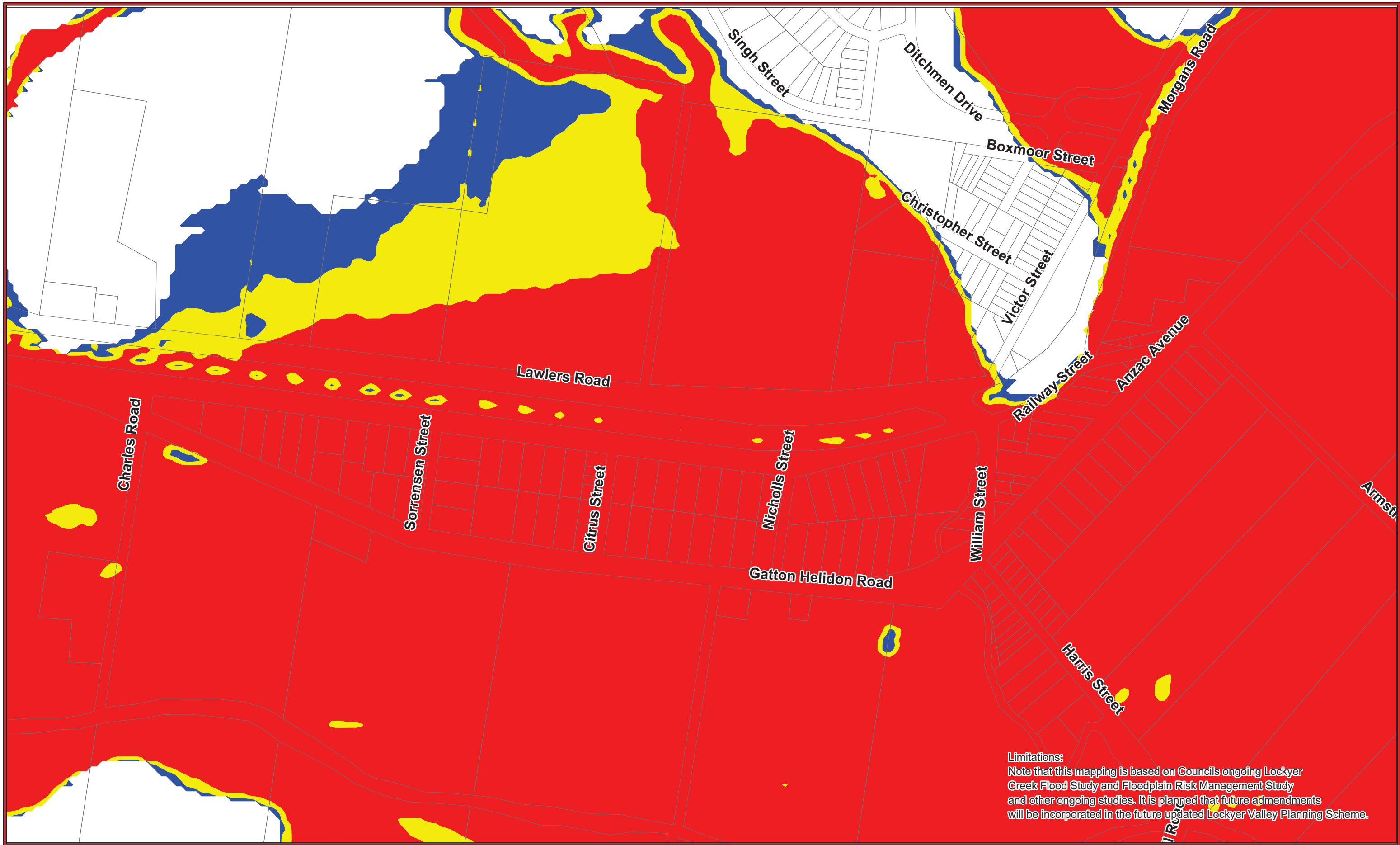
© The State of Queensland (Department of Environment and Resource Management) 2012
 © Lockyer Valley Regional Council 2012.

Temporary Local Planning Instrument (TLPI)

MAP F2-C (Helidon)

LOCKYER VALLEY REGIONAL COUNCIL

PO Box 82 Railway Street, Gatton Q 4343 Phone 1300 005 872 Fax 5462 3269



Limitations:
 Note that this mapping is based on Councils ongoing Lockyer Creek Flood Study and Floodplain Risk Management Study and other ongoing studies. It is planned that future amendments will be incorporated in the future updated Lockyer Valley Planning Scheme.

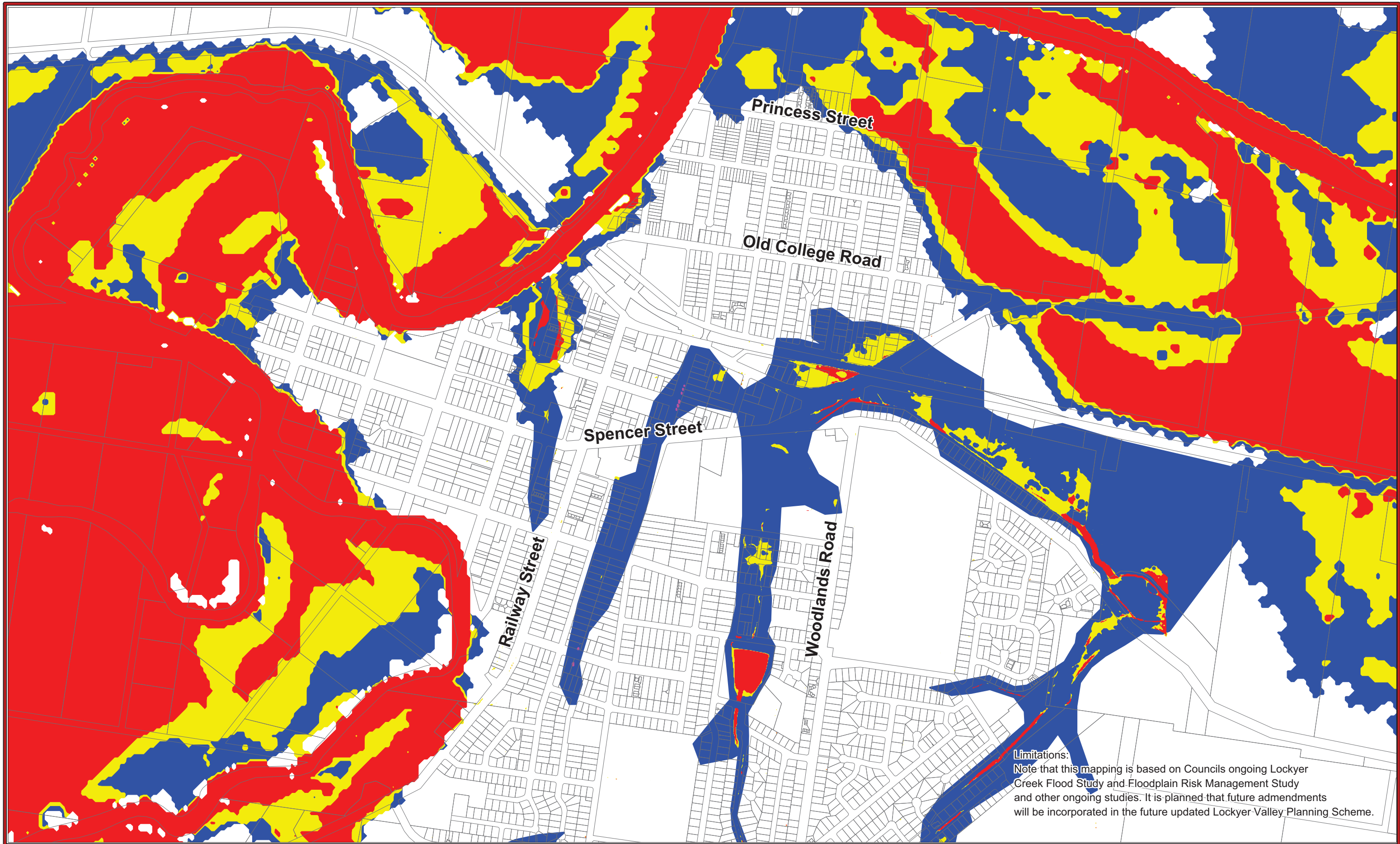
GDA
Important
 True North, Grid North and Magnetic North are shown diagrammatically for the centre of the Lockyer Valley Local Government Area. Magnetic North is correct for 2012 moving easterly by 0.016° annually.
 This map was produced on the GEOCENTRIC DATUM OF AUSTRALIA 1994 (GDA94), which has superseded the Australian Geospatial Datum of 1984 (AGD66/84). Heights are referenced to the Australia Height Datum (AHD) heights.
 For most practical purposes GDA94 coordinates and satellite derived (GPS) coordinates based on the World Geodetic Datum 1984 (WGS84) are the same.

Grid - Magnetic
10.558°



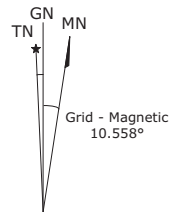
Lockyer Valley
Important Notice
 This information has been prepared for Council's internal purposes and for no other purpose. No statement is made about the accuracy or suitability of the information for use for any purpose (whether the purpose has been notified to Council or not). While every care is taken to ensure the accuracy of this data, neither the Lockyer Valley Regional Council nor the Department of Environment and Resource Management makes any representations or warranties about its accuracy, reliability, completeness or suitability for any particular purpose and disclaims all responsibility and all liability (including without limitation, liability in negligence) for all expenses, losses, damages (including indirect or consequential damage) and costs which you might incur as a result of the data being inaccurate or incomplete in any way or for any reason.
 Drawn By :
 Department : Infrastructure Services
 Date : 08-06-2012
 Projection : MGA94 Zone 56
 Size : A3
 © The State of Queensland (Department of Environment and Resource Management) 2012
 © Lockyer Valley Regional Council 2012.

Temporary Local Planning Instrument (TLPI)
MAP F2-D (Grantham)
LOCKYER VALLEY REGIONAL COUNCIL
 PO Box 82 Railway Street, Gatton Q 4343 Phone 1300 005 872 Fax 5462 3269



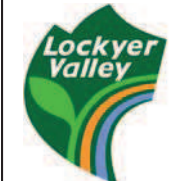
Limitations:
 Note that this mapping is based on Councils ongoing Lockyer Creek Flood Study and Floodplain Risk Management Study and other ongoing studies. It is planned that future admendments will be incorporated in the future updated Lockyer Valley Planning Scheme.

GDA
 Important
 True North, Grid North and Magnetic North are shown diagrammatically for the centre of the Lockyer Valley Local Government Area. Magnetic North is correct for 2012 moving easterly by 0.016° annually.



This map was produced on the GEOCENTRIC DATUM OF AUSTRALIA 1994 (GDA94), which has superseded the Australian Geographic Datum of 1984 (AGD66/84). Heights are referenced to the Australia Height Datum (AHD) heights.
 For most practical purposes GDA94 coordinates and satellite derived (GPS) coordinates based on the World Geodetic Datum 1984 (WGS84) are the same.

Queensland Reconstruction Authority



Drawn By :
 Department : Infrastructure Services
 Date : 08-06-2012
 Projection : MGA94 Zone 56
 Size : A3

Important Notice
 This information has been prepared for Council's internal purposes and for no other purpose. No statement is made about the accuracy or suitability of the information for use for any purpose (whether the purpose has been notified to Council or not). While every care is taken to ensure the accuracy of this data, neither the Lockyer Valley Regional Council nor the Department of Environment and Resource Management makes any representations or warranties about its accuracy, reliability, completeness or suitability for any particular purpose and disclaims all responsibility and all liability (including without limitation, liability in negligence) for all expenses, losses, damages (including indirect or consequential damage) and costs which you might incur as a result of the data being inaccurate or incomplete in any way or for any reason.

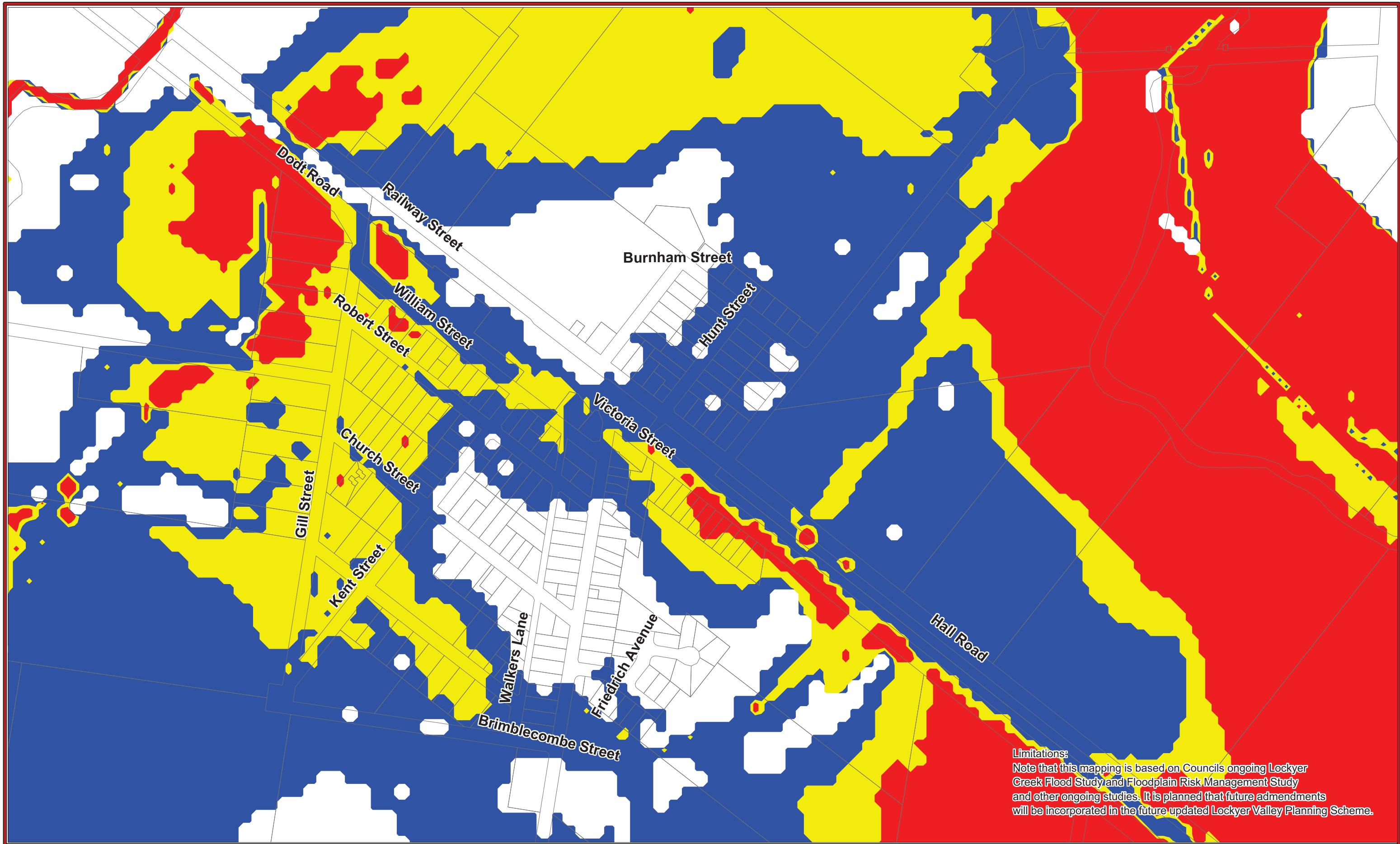
© The State of Queensland (Department of Environment and Resource Management) 2012
 © Lockyer Valley Regional Council 2012.

Temporary Local Planning Instrument (TLPI)

MAP F2-E (Gatton)

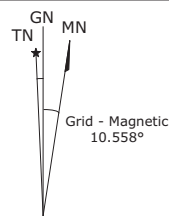
LOCKYER VALLEY REGIONAL COUNCIL

PO Box 82 Railway Street, Gatton Q 4343 Phone 1300 005 872 Fax 5462 3269



Limitations:
 Note that this mapping is based on Councils ongoing Lockyer Creek Flood Study and Floodplain Risk Management Study and other ongoing studies. It is planned that future admendments will be incorporated in the future updated Lockyer Valley Planning Scheme.

GDA
 Important
 True North, Grid North and Magnetic North are shown diagrammatically for the centre of the Lockyer Valley Local Government Area. Magnetic North is correct for 2012 moving easterly by 0.016° annually.



This map was produced on the GEOCENTRIC DATUM OF AUSTRALIA 1994 (GDA94), which has superseded the Australian Geographic Datum of 1984 (AGD66/84). Heights are referenced to the Australia Height Datum (AHD) heights.
 For most practical purposes GDA94 coordinates and satellite derived (GPS) coordinates based on the World Geodetic Datum 1984 (WGS84) are the same.

Queensland Reconstruction Authority



Drawn By :
 Department : Infrastructure Services
 Date : 08-06-2012
 Projection : MGA94 Zone 56
 Size : A3

Important Notice
 This information has been prepared for Council's internal purposes and for no other purpose. No statement is made about the accuracy or suitability of the information for use for any purpose (whether the purpose has been notified to Council or not). While every care is taken to ensure the accuracy of this data, neither the Lockyer Valley Regional Council nor the Department of Environment and Resource Management makes any representations or warranties about its accuracy, reliability, completeness or suitability for any particular purpose and disclaims all responsibility and all liability (including without limitation, liability in negligence) for all expenses, losses, damages (including indirect or consequential damage) and costs which you might incur as a result of the data being inaccurate or incomplete in any way or for any reason.

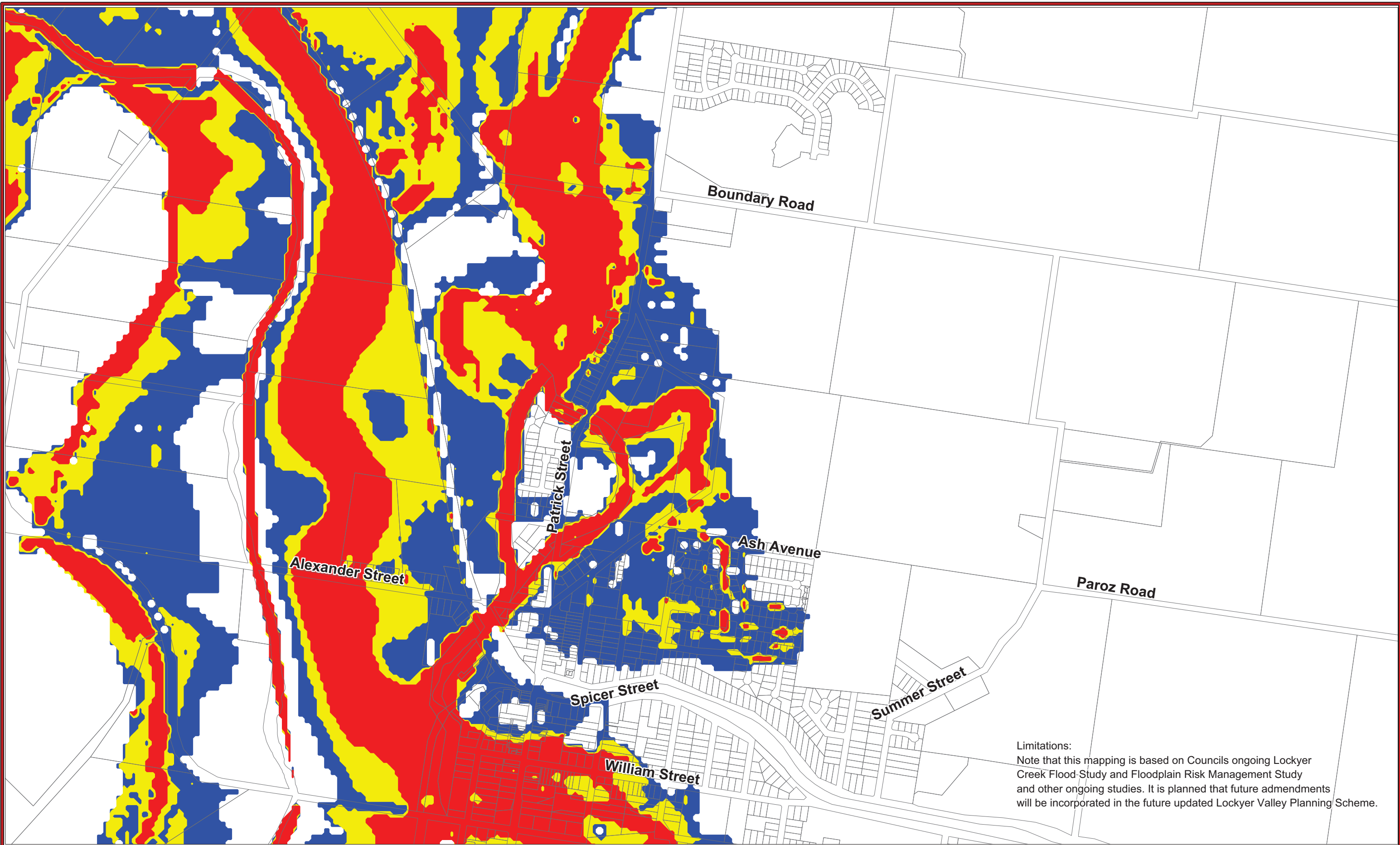
© The State of Queensland (Department of Environment and Resource Management) 2012
 © Lockyer Valley Regional Council 2012.

Temporary Local Planning Instrument (TLPI)

MAP F2-F (Forest Hill)

LOCKYER VALLEY REGIONAL COUNCIL

PO Box 82 Railway Street, Gatton Q 4343 Phone 1300 005 872 Fax 5462 3269



Limitations:
 Note that this mapping is based on Councils ongoing Lockyer Creek Flood Study and Floodplain Risk Management Study and other ongoing studies. It is planned that future admendments will be incorporated in the future updated Lockyer Valley Planning Scheme.

GDA
Important
 True North, Grid North and Magnetic North are shown diagrammatically for the centre of the Lockyer Valley Local Government Area. Magnetic North is correct for 2012 moving easterly by 0.016° annually.

This map was produced on the GEOCENTRIC DATUM OF AUSTRALIA 1994 (GDA94), which has superseded the Australian Geospatial Datum of 1984 (AGD84). Heights are referenced to the Australia Height Datum (AHD) heights.

For most practical purposes GDA94 coordinates and satellite derived (GPS) coordinates based on the World Geodetic Datum 1984 (WGS84) are the same.

GN
 TN MN
 Grid - Magnetic
 10.558°



Lockyer Valley

Important Notice
 This information has been prepared for Council's internal purposes and for no other purpose. No statement is made about the accuracy or suitability of the information for use for any purpose (whether the purpose has been notified to Council or not). While every care is taken to ensure the accuracy of this data, neither the Lockyer Valley Regional Council nor the Department of Environment and Resource Management makes any representations or warranties about its accuracy, reliability, completeness or suitability for any particular purpose and disclaims all responsibility and all liability (including without limitation, liability in negligence) for all expenses, losses, damages (including indirect or consequential damage) and costs which you might incur as a result of the data being inaccurate or incomplete in any way or for any reason.

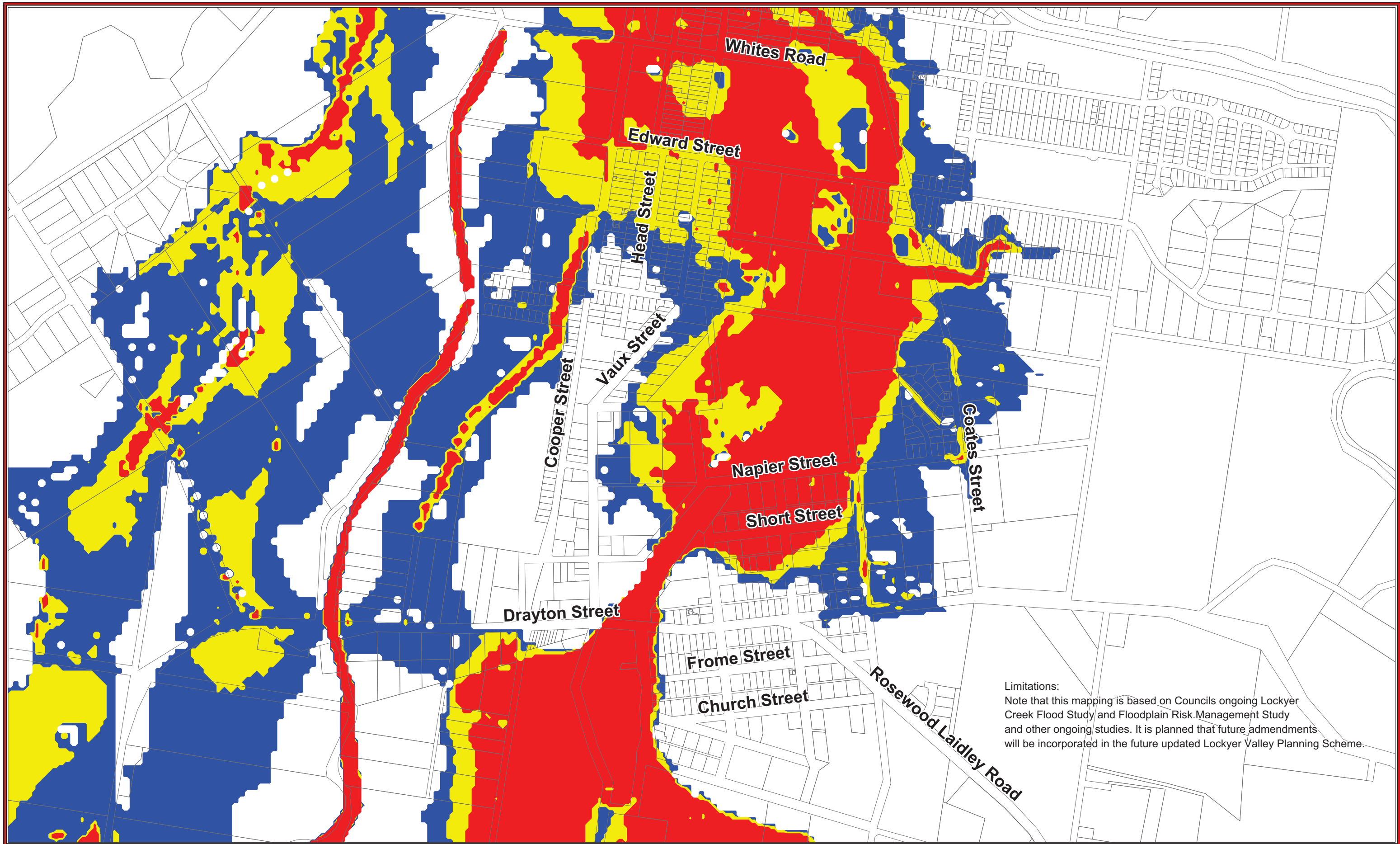
Drawn By : Infrastructure Services
 Date : 08-06-2012
 Projection : MGA94 Zone 56
 Size : A3

© The State of Queensland (Department of Environment and Resource Management) 2012
 © Lockyer Valley Regional Council 2012.

**Temporary Local
 Planning Instrument (TLPI)**

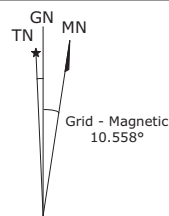
**MAP F2-G1
 (Laidley - North)**

LOCKYER VALLEY REGIONAL COUNCIL
 PO Box 82 Railway Street, Gatton Q 4343 Phone 1300 005 872 Fax 5462 3269



Limitations:
 Note that this mapping is based on Councils ongoing Lockyer Creek Flood Study and Floodplain Risk Management Study and other ongoing studies. It is planned that future amendments will be incorporated in the future updated Lockyer Valley Planning Scheme.

GDA
 Important
 True North, Grid North and Magnetic North are shown diagrammatically for the centre of the Lockyer Valley Local Government Area. Magnetic North is correct for 2012 moving easterly by 0.016° annually.



This map was produced on the GEOCENTRIC DATUM OF AUSTRALIA 1994 (GDA94), which has superseded the Australian Geodetic Datum of 1984 (AGD66/84). Heights are referenced to the Australia Height Datum (AHD) heights.
 For most practical purposes GDA94 coordinates and satellite derived (GPS) coordinates based on the World Geodetic Datum 1984 (WGS84) are the same.

Queensland Reconstruction Authority



Drawn By :
 Department : Infrastructure Services
 Date : 08-06-2012
 Projection : MGA94 Zone 56
 Size : A3

Important Notice
 This information has been prepared for Council's internal purposes and for no other purpose. No statement is made about the accuracy or suitability of the information for use for any purpose (whether the purpose has been notified to Council or not). While every care is taken to ensure the accuracy of this data, neither the Lockyer Valley Regional Council nor the Department of Environment and Resource Management makes any representations or warranties about its accuracy, reliability, completeness or suitability for any particular purpose and disclaims all responsibility and all liability (including without limitation, liability in negligence) for all expenses, losses, damages (including indirect or consequential damage) and costs which you might incur as a result of the data being inaccurate or incomplete in any way or for any reason.

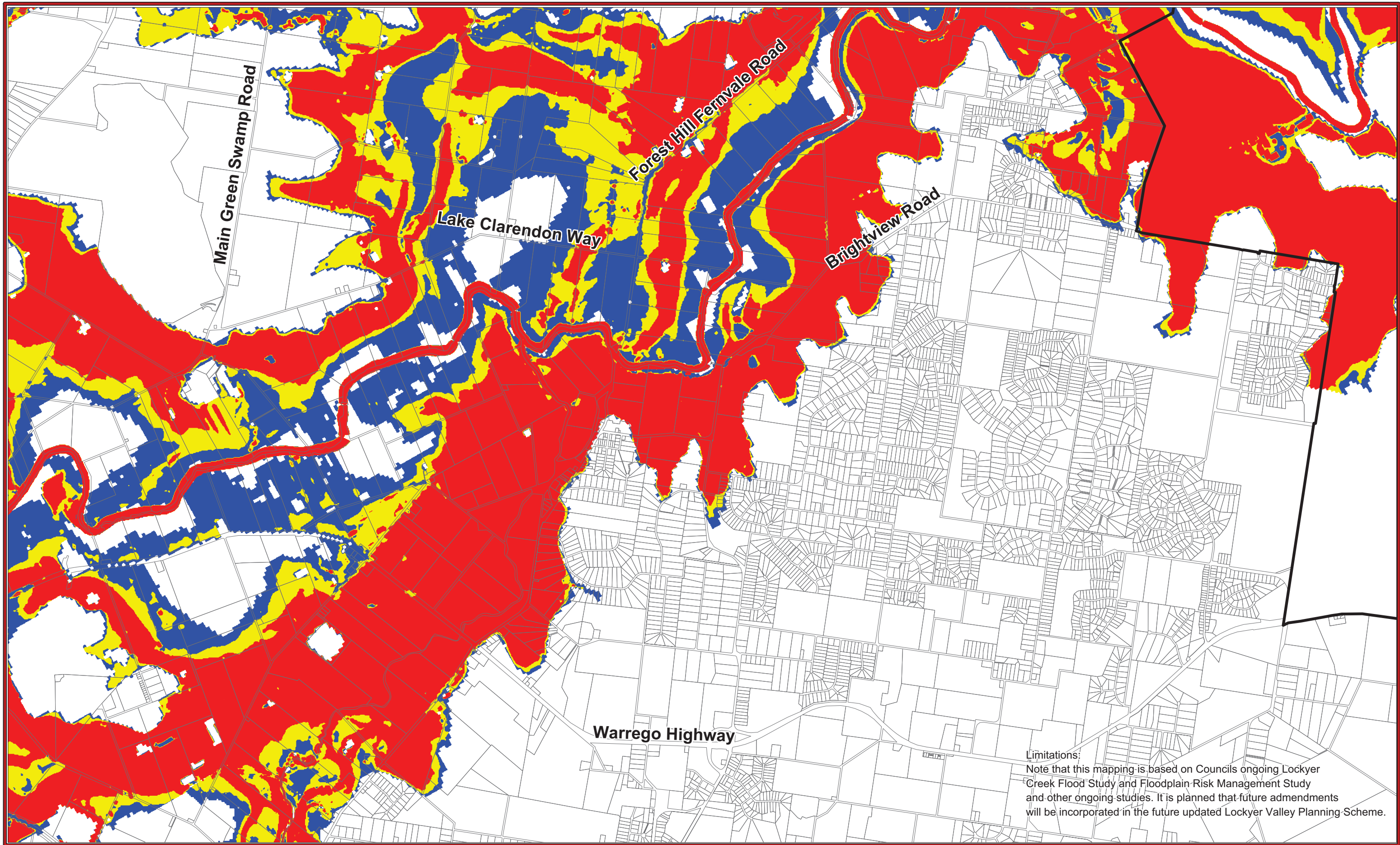
© The State of Queensland (Department of Environment and Resource Management) 2012
 © Lockyer Valley Regional Council 2012.

Temporary Local Planning Instrument (TLPI)

MAP F2-G2 (Laidley - South)

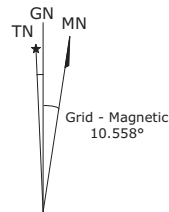
LOCKYER VALLEY REGIONAL COUNCIL

PO Box 82 Railway Street, Gatton Q 4343 Phone 1300 005 872 Fax 5462 3269

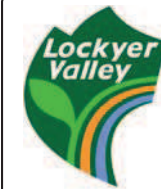


Limitations:
 Note that this mapping is based on Councils ongoing Lockyer Creek Flood Study and Floodplain Risk Management Study and other ongoing studies. It is planned that future amendments will be incorporated in the future updated Lockyer Valley Planning Scheme.

GDA
Important
 True North, Grid North and Magnetic North are shown diagrammatically for the centre of the Lockyer Valley Local Government Area. Magnetic North is correct for 2012 moving easterly by 0.016° annually.



This map was produced on the GEOCENTRIC DATUM OF AUSTRALIA 1994 (GDA94), which has superseded the Australian Geospatial Datum of 1984 (AGD66/84). Heights are referenced to the Australia Height Datum (AHD) heights.
 For most practical purposes GDA94 coordinates and satellite derived (GPS) coordinates based on the World Geodetic Datum 1984 (WGS84) are the same.



Important Notice
 This information has been prepared for Council's internal purposes and for no other purpose. No statement is made about the accuracy or suitability of the information for use for any purpose (whether the purpose has been notified to Council or not). While every care is taken to ensure the accuracy of this data, neither the Lockyer Valley Regional Council nor the Department of Environment and Resource Management makes any representations or warranties about its accuracy, reliability, completeness or suitability for any particular purpose and disclaims all responsibility and all liability (including without limitation, liability in negligence) for all expenses, losses, damages (including indirect or consequential damage) and costs which you might incur as a result of the data being inaccurate or incomplete in any way or for any reason.
 Drawn By :
 Department : Infrastructure Services
 Date : 08-06-2012
 Projection : MGA94 Zone 56
 Size : A3
 © The State of Queensland (Department of Environment and Resource Management) 2012
 © Lockyer Valley Regional Council 2012.

Temporary Local Planning Instrument (TLPI)

MAP F2-H (North East Lockyer)

LOCKYER VALLEY REGIONAL COUNCIL
 PO Box 82 Railway Street, Gatton Q 4343 Phone 1300 005 872 Fax 5462 3269